

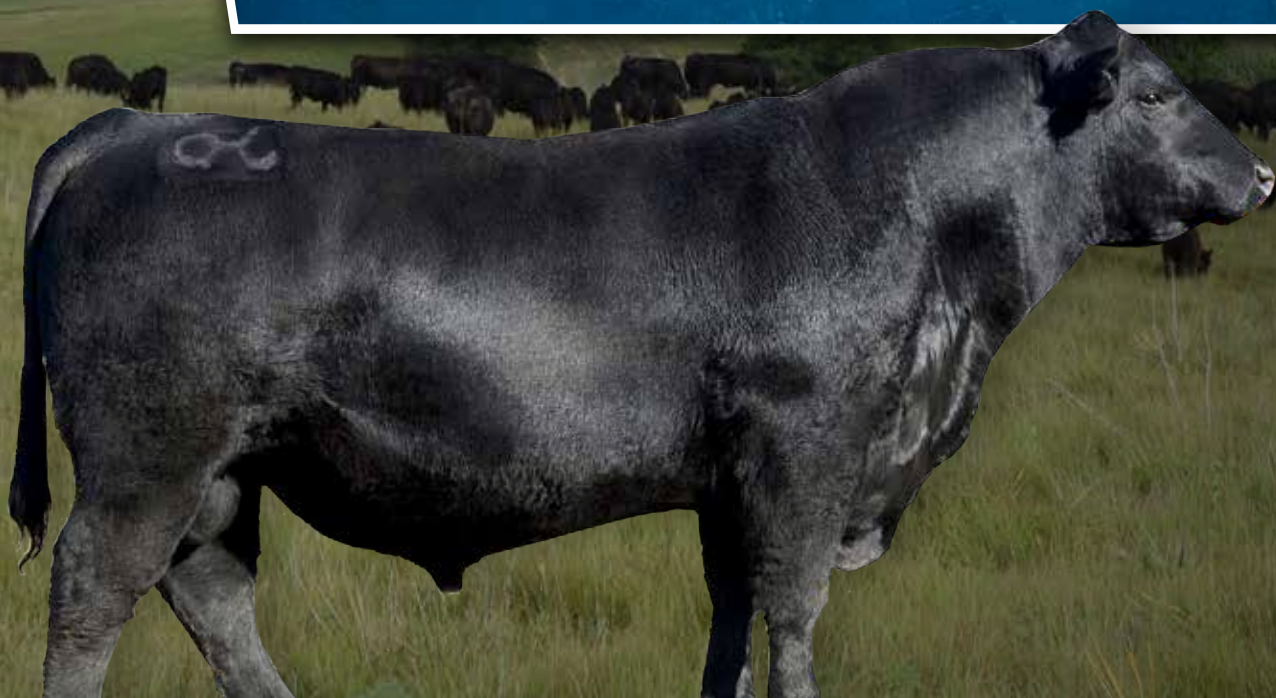


2ND ANNUAL BULL SALE

MARCH 9, 2020

HEARTLAND REGIONAL STOCKYARDS, PLAINVILLE, KS | 1 PM

- » 104 TOP QUALITY YEARLING BULLS
 - » GENOMIC ENHANCED EPDS BY ANGUSGS
 - » 1ST BREEDING SEASON GUARANTEE
 - » FREE DELIVERY TO BORDERING STATES
- » 60 RANCH-RAISED COMMERCIAL REPLACEMENT HEIFERS



dixangus@gmail.com | (785) 476-5168 dixangus.com |  Find us on Facebook

DVAuction
Broadcasting Real-Time Auctions

← Join the Auction - Live!

Welcome



Dix Angus Ranch

2595 C Road
Stockton, KS 67669
(785) 476-5168
dixangus@gmail.com
www.dixangus.com

Greetings Friends and Fellow Cattlemen,

We are excited to invite you to our 2nd Annual Bull Sale at Heartland Regional Stockyards in Plainville, Kansas on Monday, March 9, 2020.

With the challenges of 2019 now in the rear view, 2020 has kicked off to a much more promising start. Mother Nature has provided us with much more enjoyable weather to allow us to enjoy the ranching lifestyle that we love.

As we have had the opportunity to watch this set of bulls grow throughout the summer and up until sale time, they have shown us the consistency that we have been striving for, as they have more depth of quality as any set we have produced in our history. These guys exhibit all of the things we can hope for as they are bred for soundness, eye-appeal, muscle, rib shape, longevity, docility, performance, and maternal excellence while a majority adds calving ease into the package. This is credited to 20 years of AI as well as 10 years of embryo transfer work in our herd.

We are really just beginning to see the depth of quality come about from our addition of the Harrison Angus Ranch herd in the fall of 2017. We have now had the opportunity to add the top end cows into our embryo transfer program and their sons into this sale offering. The replacement females that have been added to our herd from these superior genetics keep us excited for what is to come in the future. This herd has proven itself over the past 30+ years with many high sellers, individual awards, and even the world champion pen award at the Midland Bull Test. The opportunity to add this great group of females to our herd is one like no other.

To summarize the expectations of the cows that walk the ranch is to say they are to live and produce on what Mother Nature provides. The cows raise these calves on grass and water through the summer, No Creep Feed. Posts weaning the cows graze winter grass as well as corn and milo stalks up until calving, just like a group of commercial cows. We feel like the true production cows rise to the top in this program and pass these traits onto their offspring.

It would be our pleasure to assist you in finding your next herd bull(s) in this offering as well as stand behind them with a 1st breeding season guarantee in the event an injury should occur.

Let us know if you have any questions about our program or the bulls in this offering.

Cody Dix



Jeff and Marianne



Cody, Haley, Chloe, Brook





2ND ANNUAL BULL SALE

Monday, MARCH 9, 2020, 1:00 p.m. (CST)

Selling: 104 Yearling Bulls,
60 Ranch-Raised Commercial Open Replacement Heifers



Find us on
Facebook

facebook.com/Dix-Angus-Ranch

Sale Location: Heartland Regional Stockyards
907 NW 3rd Street, Plainville, KS 67663

Lunch: Complimentary lunch at 11 A.M.

Auctioneer: Greg Goggins.....(406) 200-1880

Livestock Publication Representatives:

Jeff Mafi, *Angus Beef Bulletin*.....(816) 344-4266

Doug Paul, *The Stock Exchange*.....(405) 820-3982

Alan Sears, *Western Ag Reporter*.....(970) 396-7521

Sale Day Phones:

Cody Dix(785) 476-5168

Jeff Dix(785) 476-5030 or (785) 476-5210

Cattle Viewing:

Cattle can be viewed at any time at the ranch until Saturday prior to the sale. They will be shipped to the Heartland Regional Stockyards in Plainville and will be available for viewing Sunday, March 8 and on sale day. Videos of the bulls will be available online at DVAuction.com or dixangus.com

Sale Order:

BULLS WILL SELL IN CATALOG ORDER!

Commercial Heifers will sell in Groups of 5 Head. Winning Bidder has option to take as many as desired in increments of 5 Head.

Terms of Sale:

Terms are cash. Cattle will sell under the suggested Terms and Conditions of the American Angus Association. All cattle must be paid for in full on sale day. Any announcements from the sale block take precedence over any printed material.

Health:

Interstate health papers will be furnished with every animal selling. A rigid herd health program is followed. All bulls ear-notched and tested negative for PI-BVD and vaccinated against foot rot at time of fertility check.

Delivery:

Free Delivery on all bulls selling for \$3,000 or more in Kansas and bordering states; outside these parameters will be at cost.

Discounts:

SALE DAY PICK-UP: \$100 Discount per bull if bulls are taken home on sale day from the sale barn. Buyers will receive a 5% discount with the purchase of 5 or more bulls.

Genomics:

All the bulls have been genomically tested with AngusGS as EPDs have been adjusted accordingly. They will all have guaranteed parentage for the sire at minimum.

Retained Interest:

Dix Angus Ranch is retaining 1/3 revenue sharing interest in every bull selling in the sale. Full possession and full salvage value sells on all the bulls. Should we want to collect a bull at a later date, it will be done at the buyer's convenience.

This sale will be broadcast live on the internet.



Contact for more Information:

Call Cody: (785) 476-5168

Dix Angus Ranch

2595 C Road | Stockton, KS 67669

dixangus@gmail.com

ANGUS MEDIA

Visit the *Angus Journal* Website, www.angus.org, and view this sale book online. References: American Angus Association®, AHIR®, Angus Source®, CAB®, Pathfinder® EPDs current as of Feb. 8, 2020. Updated EPDs can be viewed at www.angus.org. The American Angus Association does not generate nor endorse \$C numerical ranks (versus percentile rankings) until \$C numerical ranks are officially released.

American Angus Association® Selection Tools

Expected Progeny Difference (EPD), is the prediction of how future progeny of each animal are expected to perform relative to the progeny of other animals listed in the database. EPDs are expressed in units of measure for the trait, plus or minus. Interim EPDs may appear on young animals when their performance has yet to be incorporated into the American Angus Association National Cattle Evaluation (NCE) procedures. This EPD will be preceded by an "I", and may or may not include the animal's own performance record for a particular trait, depending on its availability, appropriate contemporary grouping, or data edits needed for NCE.

Accuracy (ACC), is the reliability that can be placed on the EPD. An accuracy of close to 1.0 indicates higher reliability. Accuracy is impacted by the number of progeny and ancestral records included in the analysis.

GROWTH

Calving Ease Direct (CED), is expressed as a difference in percentage of unassisted births, with a higher value indicating greater calving ease in first-calf heifers. It predicts the average difference in ease with which a sire's calves will be born when he is bred to first-calf heifers.

Birth Weight EPD (BW), expressed in pounds, is a predictor of a sire's ability to transmit birth weight to his progeny compared to that of other sires.

Weaning Weight EPD (WW), expressed in pounds, is a predictor of a sire's ability to transmit weaning growth to his progeny compared to that of other sires.

Yearling Weight EPD (YW), expressed in pounds, is a predictor of a sire's ability to transmit yearling growth to his progeny compared to that of other sires.

Scrotal Circumference EPD (SC), expressed in centimeters, is a predictor of the difference in transmitting ability for scrotal size compared to that of other sires.

Docility (DOC), is expressed as a difference in yearling cattle temperament, with a higher value indicating more favorable docility. It predicts the average difference of progeny from a sire in comparison with another sire's calves.

9 D A R Propel T085									
Birth Date: 4-1-2019					Bull *19612156		Tattoo: T085		
#*SAV Resource 1441 #*DAR Maxine P104 #*Connealy Consensus 7229 #*HARB Princess Vel 980 JH					+Rito 707 of Ideal 3407 7075 *SAV Blackcap May 4136 *LD Emblazon 999 *DAR Ms Upgrade N834				
					#*Connealy Consensus Blue Lilly of Conanga 16 #*Connealy Onward #HARB Princess Vel 36 JH				
CED		BW		WW		YW		SC	
+13		+2		+84		+148		+45	
10%		30%		1%		1%		75%	
+30		+75		+87		+155		78	
95%		10%		2%		20%		100	
+22		+22		+22		+22		+22	
70%		70%		70%		70%		70%	
+049		+049		+049		+049		+049	
95%		95%		95%		95%		95%	

MATERNAL

Maternal Milk EPD (Milk), is a predictor of a sire's genetic merit for milk and mothering ability as expressed in his daughters compared to daughters of other sires. In other words, it is that part of a calf's weaning weight attributed to milk and mothering ability.

Cow Energy Value (\$EN), expressed in dollars savings per cow per year, assesses differences in cow energy requirements as an expected dollar savings difference in daughters of sires. A larger value is more favorable when comparing two animals (more dollars saved on feed energy expenses). Components for computing the cow \$EN savings difference include lactation energy requirements and energy costs associated with differences in mature cow size.

\$VALUE INDEXES

\$Value indexes, are multi-trait selection indexes to assist beef producers by adding simplicity to genetic selection decisions. \$Values are reported in dollars per head, where a higher value is more favorable. The \$Value is an estimate of how future progeny of each sire are expected to perform, on average, compared to progeny of other sires in the database if the sires were randomly mated to cows and if calves were exposed to the same environment.

Maternal Weaned Calf Value (\$M), an index, expressed in dollars per head, predicts profitability differences from conception to weaning with the underlying breeding objective assuming that individuals retain their own replacement females within herd and sell the rest of the cull female and all male progeny as feeder calves. The model assumes commercial producers will replace 25% of their breeding females in the first generation and 20% of their breeding females in each subsequent generation. Traits included are as follows: calving ease direct, calving ease maternal, weaning weight, milk, heifer pregnancy, docility, mature cow weight, claw set and foot angle.

Weaned Calf Value (\$W), an index value expressed in dollars per head, is the expected average difference in future progeny performance for pre-weaning merit. \$W includes both revenue and cost adjustments associated with differences in birth weight, weaning direct growth, maternal milk, and mature cow size.

Beef Value (\$B), an index value expressed in dollars per head, is the expected average difference in future progeny performance for postweaning and carcass value compared to progeny of other sires.

CARCASS

The genetic evaluation produces a single set of EPDs for carcass weight, marbling score, Ribeye area and fat thickness. The units of measure are in carcass trait format and analyzed on an age-constant basis.

Carcass Weight EPD (CW), expressed in pounds is a predictor of the differences in hot carcass weight of a sire's progeny compared to progeny of other sires.

Marbling EPD (Marb), expressed as a fraction of the difference in USDA marbling score of a sire's progeny compared to progeny of other sires.

Ribeye Area EPD (RE), expressed in square inches, is a predictor of the difference in ribeye area of a sire's progeny compared to progeny of other sires.

Fat Thickness EPD (Fat), expressed in inches, is a predictor of the differences in external fat thickness at the 12th rib (as measured between the 12th and 13th ribs) of a sire's progeny compared to progeny of other sires.



Driving the science of better breeding

There's little room for error in the cattle business. Producers need the most advanced information to make smart selection decisions, and Angus Genetics Inc. (AGI) provides it through genomic-enhanced expected progeny differences (GE-EPDs). EPDs that traditionally contained all pedigree, performance and progeny information now also include results from available genomic, or DNA, tests. Breeders who use genomic technology give buyers access to AGI-generated GE-EPDs that provide:

- Increased predictability and decreased risk for young and unproven animals due to enhanced accuracy of EPDs
- Better characterization of genetics for difficult-to-measure performance traits (such as carcass traits, maternal traits and feed efficiency)
- The ability to make more rapid progress for traits that are important to you, due to:
 - more accurate selection
 - easier identification of genetic outliers
 - the ability to propagate young animals with confidence earlier in their lives

In fact, GE-EPDs on unproven animals have the same amount of accuracy as if they had recorded 8-33 calves, depending on the trait. That's valuable insight, offered regularly through the breed's weekly national cattle evaluation at www.angus.org.

How do you know if EPDs are genomic-enhanced?

Ask your breeder, refer to the registration paper, or look for the AGI GE-EPD logo, Angus GS™ powered by partner Neogen GeneSeek or the HD50k or i50k by partner Zoetis.



Dix Angus Ranch Bull Guarantee

We guarantee that all breeding cattle sold by Dix Angus Ranch are fertile to the best of our knowledge. If at any time during the first breeding season following the sale a bull is injured so as to make them functionally infertile, we will provide you with a satisfactory replacement (if available), or issue you a credit equal to the bull's purchase price minus the salvage value received for that bull. This guarantee is in addition to the Terms and Conditions of the American Angus Association, which also apply.

This is not a life insurance policy. We will not replace or give credit for a dead or incapacitated animal resulting from negligence. We would suggest that normal care still needs to be exercised toward these animals and that particularly the yearling bulls not be allowed to get too thin.

Dix Angus Ranch



D A R Coal Train S060 - Lot 1

1 D A R Coal Train S060

Birth Date: 9-10-2018 Bull *19412197 Tattoo: S060

*Boyd Signature 1014
Deer Valley Coal Train 41157
*18030488 Long Erica 208

*Kesslers Frontman R001
*Boyd Erica Dianna 9054
*SAV Final Answer 0035
Thomas Erica 4561

*Rito 12E7 of 5F56 Rito 5M2
BJ 12E7 Rito 5258
*18531384 *BJ Complete 1268

*Rito Revenue 5M2 of 2536 Pre
*Rita 5F56 of 1198 FD
*Summitcrest Complete 1P55
+BJ Objective 8212

CED	BW	WW	YW	SC	DOC	MILK
+5 60%	+1.2 50%	+55 50%	+102 40%	+50 70%	+3 95%	+25 50%
\$EN	\$M	\$W	\$B	ACT BW	RATIO	ADJ. WW RATIO
-13 60%	+32 95%	+58 40%	+150 25%	N/A	N/A	N/A

Coal Train S060 will lead off the sale as the only fall born bull in the offering. He is truly special as his dam was our selection as the top-selling bred heifer in the 2017 BJ Angus Genetics sale. His dam, 5258, is expected to enter our donor pen in the future with her powerful design and soundness. We have already had great success with her maternal granddam Objective 8212 in our Embryo Transfer program. S060 exhibits great length of body, rib shape, and soundness in a calving-ease package.

HARB Hindquarter 473 JH - Sire of Lots 2, 3 & 4



CED	BW	WW	YW	MILK	\$M	\$W	\$B
+16	+3	+76	+124	+28	+75	+86	+113

+HARB Stur-D 191 JH x #*Connealy Onward

2 D A R Constitution T040

Birth Date: 3-4-2019 Bull *19606209 Tattoo: T040

+HARB Stur-D 191 JH
HARB Hindquarter 473 JH
*18033745 #*HARB Princess Vel 980 JH

#*Leachman Right Time
#HARB Black Lady 073 JH
#*Connealy Onward
#HARB Princess Vel 36 JH

*AAR Ten X 7008 SA
SandPoint Eldorene 3033
#17580890 SandPoint Eldorene 1034

#*Mytty In Focus
#AAR Lady Kelton 5551
#*Rito 6EM3 of 4L1 Emblazon
SandPoint Eldorene 9060

CED		BW		WW		YW		SC		DOC		MILK	
+9	30%	+1.7	60%	+85	1%	+144	1%	+43	75%	+27	10%	+31	15%
\$EN		\$M		\$W		\$B		ACT BW		RATIO		ADJ. WW	
-25	90%	+70	15%	+99	1%	+139	35%	86	108	734	120		

Constitution is an outstanding son of the BEEF-360 Exclusive sire HARB Hindquarter473 JH. He was produced by a Pathfinder Dam as she has recorded an impressive nursing ratio of 5@115 while maintaining a 366-day average calving interval. This extremely stout performance bull is a full brother to our top-selling bull from the 2018 private treaty sale D A R Fundamental who was purchased by McClaren Angus, Fowler, Kansas.



D A R Constitution T040 - Lot 2

Dix Angus Ranch



D A R Emerge T039 - Lot 3

3 D A R Emerge T039

Birth Date: 2-27-2019 Bull *19606207 Tattoo: T039

HARB Hindquarter 473 JH
*18033745
#HARB Stur-D 191 JH
#HARB Princess Vel 980 JH
#Leachman Right Time
#HARB Black Lady 073 JH
#*Connealy Onward
#HARB Princess Vel 36 JH
ANGUSGS
#*EXAR Upshot 0562B
DAR Ms Upshot N842
*17613885
#*SS Objective T510 0T26
#GAR 1407 New Design L194

CED		BW		WW		YW		SC		DOC		MILK	
+12	10%	+9	40%	+74	5%	+133	4%	+91	40%	+21	30%	+27	35%
\$EN		\$M		\$W		\$B		ACT BW		RATIO		ADJ. WW RATIO	
-25	90%	+64	30%	+80	5%	+144	30%	80	100	790	130		

D A R Emerge T039 simply emerged from the pack as he turned in a "LIGHTS OUT" 130 WW ratio as the top weaning calf in the herd! He is the natural born calf from our proven donor MS Upshot N842 who has turned in a nursing record of 4@113! She has also produced over \$40,000 in progeny sales. His two maternal sisters have combined to record 3@109 for WW ratio. His dam has produced an IMF ratio of 19@108 as well. Emerge is a wide based, easy striding bull with tons of length and volume. He will make outstanding daughters with the combination of his outstanding dam and the powerful cowmaker Hindquarter. HERD BULL.



DAR Ms Upshot N842 - Dam of Lot 3.

4 D A R Hindquarter T041

Birth Date: 3-1-2019 Bull *19618949 Tattoo: T041

HARB Hindquarter 473 JH
*18033745
#HARB Stur-D 191 JH
#HARB Princess Vel 980 JH
#Leachman Right Time
#HARB Black Lady 073 JH
#*Connealy Onward
#HARB Princess Vel 36 JH
ANGUSGS
#Salt Creek Bob 7003
Summitcrest Erica 105X
16875732
#Summitcrest Erica 359P
+Hoff Insignia 697 224
Hoff Blackbird SC 244 939
B/R New Perspective 079
Summitcrest Erica 032M

CED		BW		WW		YW		SC		DOC		MILK	
+6	50%	+1.3	50%	+65	20%	+101	45%	+0.1	90%	+19	40%	+22	70%
\$EN		\$M		\$W		\$B		ACT BW RATIO		ADJ. WW RATIO			
-21	80%	+62	35%	+67	20%	+115	75%	80	98	670	102		

Hindquarter T041 is a maternal brother to the most well-known female we have ever produced, D A R Erica M758, who was sold by Rimrock Productions, Texas, for \$28,000. His donor dam has logged a nursing ratio of 7@105. YW 6@107, IMF 31@109. She has also produced over \$60,000 in progeny sales. T041 is certainly an outcross pedigree for any program in the country, bred to make excellent females with great performance.



D A R Erica M758 - Maternal sister to Lot 4.

Dix Angus Ranch



D A R Trademark T014 - Lot 5

5

D A R Trademark T014

Birth Date: 2-16-2019 Bull #*19650357 Tattoo: T014

SITZ Logo 12964 *17746620	#*Sitz Tebow 11860	#Sitz New Design 458N	CW
	#*SITZ Shauna 3152	Sitz Emma E 2738	+58 10%
ANGUS GS HARB Princess Vel 980 JH #*16548463		Sitz Game Day 9470	MARB
		#Sitz Shauna 1590	+0.04 95%
	#*Connealy Onward	#Connealy Lead On	RE
		Altune of Conanga 6104	+0.70 30%
	#HARB Princess Vel 36 JH	#HARB Cincha 829	FAT
		HARB RCA Princess Vel 03	-0.020 15%

CED	BW	WW	YW	SC	DOC	MILK
+11 15%	+7 40%	+78 3%	+126 10%	+1.93 3%	+30 4%	+28 25%
\$EN	\$M	\$W	\$B	ACT BW RATIO	ADJ. WW RATIO	
-23 85%	+90 1%	+90 1%	+116 70%	84	100	707 100

Trademark is possibly the best bull we have ever raised in the history of our program from the best cow to ever take stride on the ranch. He is a maternal brother to the BEEF-360 sire Hindquarter and the \$60,000 HARB JH Overhaul. Maternal excellence at its best - a 2nd generation Pathfinder along with her 3 full sisters have produced a combined weaning ratio of 107 on 24 progeny! Trademark is bound for excellence with his powerful design, added length, and soundness in a calving-ease package by the #1 proven sire for Heifer Pregnancy in the breed Sitz Logo. HERD BULL Opportunity!



HARB Princess Vel 980 JH - Dam of Lots 5 and 6.

6

D A R Logo T015

Birth Date: 2-22-2019 Bull #*19650358 Tattoo: T015

SITZ Logo 12964 *17746620	#*Sitz Tebow 11860	#Sitz New Design 458N	CW
	#*SITZ Shauna 3152	Sitz Emma E 2738	+60 10%
ANGUS GS HARB Princess Vel 980 JH #*16548463		Sitz Game Day 9470	MARB
		#Sitz Shauna 1590	+68 30%
	#*Connealy Onward	#Connealy Lead On	RE
		Altune of Conanga 6104	+46 65%
	#HARB Princess Vel 36 JH	#HARB Cincha 829	FAT
		HARB RCA Princess Vel 03	+0.018 60%

CED	BW	WW	YW	SC	DOC	MILK
+12 10%	+2 30%	+81 2%	+135 3%	+1.21 25%	+29 5%	+23 65%
\$EN	\$M	\$W	\$B	ACT BW RATIO	ADJ. WW RATIO	
-26 90%	+80 3%	+86 2%	+151 20%	78	100	617 100

Logo T015 is a very deep bodied bull with tons of length. He is very smooth when put into motion. Maternal excellence at its best - a 2nd generation Pathfinder along with her 3 full sisters have produced a combined weaning ratio of 107 on 24 progeny! He is a full brother to Lot 5.



D A R Logo T015 - Lot 6

Dix Angus Ranch

7

D A R Brand Name T017

Birth Date: 2-3-2019 Bull 19638449 Tattoo: T017

#*Sitz Tebow 11860

#Sitz New Design 458N

CW

SITZ Logo 12964

*17746620

ANGUSGS

Powered by Angus Genetics

DAR Lady R768

19084726

#*SITZ Shauna 3152

Sitz Emma E 2738

+43 45%

Sitz Game Day 9470

MARB

#Sitz Shauna 1590

+36 70%

HARB Horsepower 561 JH

#*PA Power Tool 9108

RE

#HARB Frances 770 JH

+60 40%

DAR Lady O404

#*Connealy Final Solution

FAT

DAR Lady M708

+018 60%

CED	BW	WW	YW	SC	DOC	MILK
+15 2%	-8 15%	+72 10%	+124 10%	+82 50%	+19 40%	+28 25%
\$EN	\$M	\$W	\$B	ACT BW RATIO	ADJ. WW RATIO	
-26 90%	+71 15%	+83 3%	+108 80%	70	96	654 117

Brand Name was produced by a first calf heifer by our own sire HARB Horsepower who turned in an impressive 117 weaning weight ratio. Brand Name has always been easy to find when looking through the pen with his powerful design as a calving ease bull. He is very deep bodied and thick ended from behind with a very smooth front end on him.



D A R Brand Name T017 - Lot 7

8

D A R Logo T016

Birth Date: 1-30-2019 Bull *19638453 Tattoo: T016

#*Sitz Tebow 11860

#Sitz New Design 458N

CW

SITZ Logo 12964

*17746620

ANGUSGS

Powered by Angus Genetics

DAR Pride R714

18901322

#*SITZ Shauna 3152

Sitz Emma E 2738

+63 5%

Sitz Game Day 9470

MARB

#Sitz Shauna 1590

+40 65%

HA Outside 3878

#*KG Solution 0018

RE

#*HA Blackcap Lady 1914

+50 60%

#Molitor 713 Pride 6022-034

+BPF In Focus 713

FAT

Molitor 1333 Pride 366-6022

+020 65%

CED	BW	WW	YW	SC	DOC	MILK
+9 30%	+8 40%	+85 1%	+139 2%	+02 90%	+12 70%	+22 70%
\$EN	\$M	\$W	\$B	ACT BW RATIO	ADJ. WW RATIO	
-24 85%	+82 2%	+90 1%	+140 35%	64	89	610 109

T016 is a bigger outlined Logo son produced by one of the highest performance females in the herd. His sleek design from end to end in combination with his double-digit CED and curve-bending performance certainly add a lot of attraction to the heifer bull.



D A R Propel T085 - Lot 9

9

D A R Propel T085

Birth Date: 4-1-2019 Bull *19612156 Tattoo: T085

#*SAV Resource 1441

+Rito 707 of Ideal 3407 7075

DAR Turbo R146

*18900778

*DAR Maxine P104

*SAV Blackcap May 4136

*LD Emblazon 999

*DAR Ms Upgrade N834

ANGUSGS

Powered by Angus Genetics

HARB Princess Vel Z88 JH

*17456565

#*Connealy Consensus 7229

#*Connealy Consensus

Blue Lilly of Conanga 16

#*HARB Princess Vel 980 JH

#*Connealy Onward

#HARB Princess Vel 36 JH

CED	BW	WW	YW	SC	DOC	MILK
+13 10%	+2 30%	+84 1%	+148 1%	+45 75%	+30 4%	+22 70%
\$EN	\$M	\$W	\$B	ACT BW RATIO	ADJ. WW RATIO	
-30 95%	+75 10%	+87 2%	+155 20%	78	100	726 124

Propel T085 is an absolute standout as you enter the pen with his superior Angus character. He is a very stout made bull with great length and rib shape in a moderate framed package. His dam is produced by the most productive and consistent cow family in the herd. She has produced 5@102 for WW ratio while her dam and flush sisters have turned in a combined 24@107 and all are Pathfinder Cows. The maternal power bred into this family is second to none which earned her way into our embryo program. A maternal brother to him sold in 2019 to Stipe Angus Ranch in Oregon. A Resource derivative that has Calving-Ease, Marbling and Performance. Three maternal brothers sell as Lots 67-69. HERD BULL.

Dix Angus Ranch

10

D A R Bankroll T022

Birth Date: 2-6-2019 Bull 19636617 Tattoo: T022

#*Barstow Cash
Barstow Bankroll B73
*18036327
Barstow Miss Dianna Z25
#*Connealy Capitalist 028
DAR Jilt Q684
18575599
DAR Jilt Q471

#*Sitz Dash 10277
Barstow Queen W16
#CAR Efficient 534
#Barstow Miss Dianna X128
#*SAV Final Answer 0035
Prides Pita of Conanga 8821
DAR JD Confidence GB58
#CRD Jilt 5103

CW
+51 25%
MARB
+49 55%
RE
+45 65%
FAT
+043 90%

CED	BW	WW	YW	SC	DOC	MILK
+8 35%	-3 20%	+71 10%	+120 15%	+69 55%	+24 20%	+16 95%
\$EN	\$M	\$W	\$B	ACT BW RATIO	ADJ. WW RATIO	
-30 95%	+42 90%	+64 25%	+126 55%	78	101	602 99

Bankroll T022 is stacked with 3 generations of calving-ease sires as well as coming from the cow family that started our seedstock adventure. A heifer bull prospect that has a lot of base width and muscle while be straight in his top line.



D A R Bankroll T022 - Lot 10

11

D A R Bandit T061

Birth Date: 3-13-2019 Bull +*19658264 Tattoo: T061

L/R Colt 45 3045
*17635471
S/C Medicine Man 01Y7
#Summitcrest Blizzard 0X62
#*Summitcrest Complete 1P55
Summitcrest Elba 1Y90
16963116

#Connealy Right Answer 746
Summitcrest Pridemere 16W9
+Summitcrest Darth 1S37
#Summitcrest Blizzard 3S89
#CF Right Design 1802
Summitcrest Elba 1M17
#Gardens Prime Time
Summitcrest Elba 4H56

CW
+49 30%
MARB
+02 95%
RE
+95 10%
FAT
-013 20%

CED	BW	WW	YW	SC	DOC	MILK
+8 35%	+4 30%	+51 65%	+107 30%	+1.22 25%	+15 60%	+26 40%
\$EN	\$M	\$W	\$B	ACT BW RATIO	ADJ. WW RATIO	
-12 55%	+38 95%	+52 55%	+147 25%	80	100	642 100

Bandit is full brother to our great herd bull Gunslinger. He is designed very similarly to his brother with a powerful and classy look. We are seeing superior fleshing ability in this pedigree and expect the offspring to carry it into the future. A bull with great depth of body, a smooth shoulder, and tremendous power when viewed from the rear.



D A R Bandit T061 - Lot 11



D A R Longmire T055 - Lot 12

12

D A R Longmire T055

Birth Date: 3-21-2019 Bull 19630067 Tattoo: T055

DAR Gunslinger R177
+*18965558
Summitcrest Elba 1Y90

S/C Medicine Man 01Y7
#Summitcrest Blizzard 0X62
#*Summitcrest Complete 1P55
Summitcrest Elba 0K96

*A&B SpotLite 3065
HARB Jerica D55 JH
18638319
HARB Jerica B72 JH

Tehama 944 R525
#A&B Queen 1021
*TC Forthright 9284
HARB Juanada Erica 679 JH

CW
+63 5%
MARB
+14 95%
RE
+60 40%
FAT
+024 70%

CED	BW	WW	YW	SC	DOC	MILK
+6 50%	+6 35%	+83 1%	+149 1%	+1.62 10%	+21 30%	+27 35%
\$EN	\$M	\$W	\$B	ACT BW RATIO	ADJ. WW RATIO	
-35 95%	+43 85%	+89 1%	+134 45%	82	106	777 127

Longmire has been a favorite since he hit the ground. He turned in the second highest WW ratio at 127 to earn his Spotlight dam a weaning record of 2@114. He has great style and eye appeal. T055 carries a powerful hip with great muscle shape. Outcross opportunity in this lead-off bull of the Gunslinger sire group.



D A R Lawman T056 - Lot 13

13

D A R Lawman T056

Birth Date: 2-11-2019 Bull 19606212 Tattoo: T056

DAR Gunslinger R177
+*18965558
Summitcrest Elba 1Y90

S/C Medicine Man 01Y7
#Summitcrest Blizzard 0X62
#*Summitcrest Complete 1P55
Summitcrest Elba 0K96

Sitz Investment 648B
DAR Rita Q687
18582728
DAR Rita Q485

#*Sitz Investment 660Z
Sitz Barabaramere Nell 18U
#*Hoover Dam
Dar Rita L430

CW
+50 25%
MARB
+31 80%
RE
+40 75%
FAT
+033 80%

CED	BW	WW	YW	SC	DOC	MILK
+5 60%	+1.0 45%	+57 40%	+107 30%	+1.84 4%	+29 5%	+36 3%
\$EN	\$M	\$W	\$B	ACT BW RATIO	ADJ. WW RATIO	
-12 55%	+69 20%	+73 15%	+119 65%	86	111	642 105

Lawman is another standout of the Gunslinger derivatives. A deep bodied bull that carries all the way into his flank. He was produced by an outstanding Sitz Investment 648B daughter whose daughters are averaging a nursing ratio of 103.

Dix Angus Ranch

14

D A R Gunslinger T057

Birth Date: 4-1-2019

Bull 19612157

Tattoo: T057

*L/R Colt 45 3045	S/C Medicine Man 01Y7	CW
DAR Gunslinger R177	#Summitcrest Blizzard 0X62	+26 85%
+*18965558	#*Summitcrest Complete 1P55	MARB
Summitcrest Elba 1Y90	Summitcrest Elba 0K96	+0.07 95%
ANGUS		RE
*LD Emblazon 999	#*OCC Emblazon 854E	+0.61 40%
HARB Miss Erica D74 JH	#*SH Forever Lady 3124 5118	FAT
18638323	HARB Miss Erica 671 JH	-0.024 15%
	HARB Miss Erica 480 JH	

CED	BW	WW	YW	SC	DOC	MILK
+10 20%	-1.4 10%	+49 70%	+95 55%	+58 65%	+26 15%	+31 15%
\$EN	\$M	\$W	\$B	ACT BW	RATIO	ADJ. WW
-8 40%	+63 35%	+62 30%	+99 90%	78	104	688 117

T057 is another high performing, big spread son of Gunslinger. Consistent in eye appeal and sound design. He is a heavy muscled bull for his display of sub-zero birthweight EPD and double-digit CED.

16

D A R Gunslinger T060 [OSF]

Birth Date: 2-4-2019

Bull 19661078

Tattoo: T060

*L/R Colt 45 3045	S/C Medicine Man 01Y7	CW
DAR Gunslinger R177	#Summitcrest Blizzard 0X62	+29 80%
+*18965558	#*Summitcrest Complete 1P55	MARB
Summitcrest Elba 1Y90	Summitcrest Elba 0K96	+0.47 60%
ANGUS		RE
*Deer Valley All In	#*AAR Ten X 7008 SA	+0.58 45%
DAR Sophie Q701	+*Deer Valley Rita 0274	FAT
19658785	8N Upstart 102	-0.002 35%
	DAR Sophie M727	

CED	BW	WW	YW	SC	DOC	MILK
+8 35%	-3 20%	+49 70%	+106 35%	+1.75 5%	+20 35%	+25 50%
\$EN	\$M	\$W	\$B	ACT BW	RATIO	ADJ. WW
-7 40%	+41 90%	+50 65%	+137 40%	78	101	573 94

T060 is another heifer bull sired by our Herd Sire, Gunslinger. He offers a top 2% EPD for RADG so his offspring should really grow. He's a very balanced bull in his phenotype with extra muscle when compared to his contemporaries.

15

D A R Coal Train T058

Birth Date: 2-19-2019

Bull 19612158

Tattoo: T058

*Boyd Signature 1014	#*Kesslers Frontman R001	\$ CW	D CW
Deer Valley Coal Train 41157	*Boyd Erica Dianna 9054	62	38
*18030488	*SAV Final Answer 0035	MARB	MARB
Long Erica 208	Thomas Erica 4561	0.18	0.39
		RE	RE
*HARB Hindquarter 473 JH	+HARB Stur-D 191 JH	0.85	0.51
HARB Flora D75 JH	#*HARB Princess Vel 980 JH	FAT	FAT
18638329	HARB Stud 282 JH	0.026	0.039
	HARB Flora Z95 HH		

CED	BW	WW	YW	SC	DOC	MILK
5	1	80	145	1.48	8	23
8	2.5	69	115	0.6	18	32
\$EN	\$M	\$W	\$B	ACT BW	RATIO	ADJ. WW
-39	30	78	147	74	99	602 103
-24	71	77	119			

Coal Train T058 was produced by an outstanding daughter by Hindquarter that stems back to the same cow that produced the high-selling bull last year. He shows a big EPD spread from +0.8 BW to +120 YW while he is a heavy muscled bull with a lot of style.

17

D A R Raindance T010

Birth Date: 2-24-2019

Bull +*19638765

Tattoo: T010

*+*Coleman Charlo 0256	#*OCC Paxton 730P	CW
SAV Raindance 6848	+Bohi Abigale 6014	+58 10%
+*18578965	#SAV 8180 Traveler 004	MARB
*SAV Blackcap May 4136	#+SAV May 2397	+0.51 50%
ANGUS		RE
*LD Emblazon 999	#*OCC Emblazon 854E	+0.92 10%
DAR Maxine P104	#*SH Forever Lady 3124 5118	FAT
*18244844	#*Styles Upgrade J59	+0.023 70%
	+BJ Objective 8212	

CED	BW	WW	YW	SC	DOC	MILK
+9 30%	+7 40%	+75 4%	+142 2%	+1.17 85%	+29 5%	+27 35%
\$EN	\$M	\$W	\$B	ACT BW	RATIO	ADJ. WW
-36 95%	+49 75%	+78 10%	+150 25%	76	94	740 113

Raindance T010 is a very docile, high performing son of S A V Raindance. He has been at the top of our list since he was young. Produced by the Maxine cow who is the best cow we've produced. Extremely long sided bull, deep ribbed, with all the extras. T010 should make some excellent replacement females. Maternal brother to our herd sire D A R Turbo. Full brother to Lot 18.



D A R Raindance T010 - Lot 17

Dix Angus Ranch

18

D A R Raindance T009

Birth Date: 2-16-2019 Bull *19638764 Tattoo: T009

SAV Raindance 6848
#*18578965
*Coleman Charlo 0256
*SAV Blackcap May 4136

ANGUS GS
Powered by Angus Genetics

DAR Maxine P104
*18244844

*LD Emblazon 999
*DAR Ms Upgrade N834

#*OCC Paxton 730P
+Bohi Abigale 6014
#SAV 8180 Traveler 004
#SAV May 2397

#*OCC Emblazon 854E
#*SH Forever Lady 3124 5118
#*Styles Upgrade J59
+BJ Objective 8212

CW
+44 40%
MARB
+15 95%
RE
+75 25%
FAT
+002 40%

CED	BW	WW	YW	SC	DOC	MILK
+7 45%	+6 35%	+71 10%	+131 5%	+57 65%	+27 10%	+23 65%
\$EN	\$M	\$W	\$B	ACT BW RATIO	ADJ. WW RATIO	
-26 90%	+57 50%	+72 15%	+108 80%	78	100	624 100

A powerfully designed, easy to find Raindance son that is from the best cow ever produced on the ranch. One would expect easy calving, high performing progeny to be returned from T009 with added RE when hung on the rail. Full brother to Lot 17.



D A R Raindance T009 - Lot 18

19

D A R Raindance T012

Birth Date: 3-6-2019 Bull *19638770 Tattoo: T012

SAV Raindance 6848
#*18578965
*Coleman Charlo 0256
*SAV Blackcap May 4136

ANGUS GS
Powered by Angus Genetics

Hedgewood Rita 301
#*17614403

*Connealy Capitalist 028
+Hedgewood Rita 521

#*OCC Paxton 730P
+Bohi Abigale 6014
#SAV 8180 Traveler 004
#SAV May 2397

#*SAV Final Answer 0035
Prides Pita of Conanga 8821
#*N Bar Emulation EXT
+Hedgewood Rita 3100 of CC

CW
+30 80%
MARB
-13 95%
RE
+68 30%
FAT
+001 35%

CED	BW	WW	YW	SC	DOC	MILK
+9 30%	-1.4 10%	+50 65%	+87 70%	+06 90%	+27 10%	+18 95%
\$EN	\$M	\$W	\$B	ACT BW RATIO	ADJ. WW RATIO	
+2 20%	+66 25%	+51 60%	+95 95%	70	85	618 94

T012 could be considered the most stylish bull in the pen. He's exceptional in his design from a correctness standpoint. He's a wide based bull that is moderated in his stature. Produced by the great 301 donor and a maternal brother to our herd sire D A R Midnight 6050.

20

D A R Rainmaster T013

Birth Date: 2-11-2019 Bull *19607943 Tattoo: T013

SAV 654X Rainmaster 6849
#*18578966
*Coleman Charlo 0256
*SAV Blackcap May 4136

ANGUS GS
Powered by Angus Genetics

DAR Miss Rita Q628
#*18587980

*EF Complement 8088
*Deer Valley Miss Rita 3292

#*OCC Paxton 730P
+Bohi Abigale 6014
#SAV 8180 Traveler 004
#SAV May 2397

#Basin Franchise P142
+EF Everelda Entense 6117
#*EXAR Upshot 0562B
+Basin Miss Rita 9675

CW
+32 75%
MARB
+79 20%
RE
+72 25%
FAT
+041 90%

CED	BW	WW	YW	SC	DOC	MILK
+10 20%	+4 30%	+59 35%	+103 40%	+1.88 3%	+19 40%	+28 25%
\$EN	\$M	\$W	\$B	ACT BW RATIO	ADJ. WW RATIO	
-1 25%	+60 40%	+73 15%	+116 70%	90	116	559 92

Rainmaster T013 exhibits extra length of hip and excellent muscle. His dam is a very refined female in her makeup with a great udder. She has also turned in an impressive calving interval of 362 days on her first 2 calves. A maternal brother by Hindquarter sold in last year's sale to Benoit Feeders, Damar, Kansas.



D A R Payweight T019 - Lot 21

21

D A R Payweight T019

Birth Date: 3-7-2019 Bull 19623225 Tattoo: T019

Basin Payweight 1682
#*17038724
#*Basin Payweight 006S
21AR O Lass 7017

ANGUS GS
Powered by Angus Genetics

DAR Irene N819
#17613909

*Connealy Confidence 0100
#Molitor 2720 Irene 9025-1047

#Vermilion Payweight J847
+Basin Lucy 3829
#HARB Pendleton 765 JH
21AR O Lass F24A

Connealy Tobin
Becka Gala of Conanga 8281
#Hunts Calculator 2720
Molitor 610 Irene 677-9025

CW
+36 65%
MARB
+98 10%
RE
+15 95%
FAT
+091 95%

CED	BW	WW	YW	SC	DOC	MILK
+6 50%	+3 30%	+52 60%	+86 70%	+64 60%	+24 20%	+28 25%
\$EN	\$M	\$W	\$B	ACT BW RATIO	ADJ. WW RATIO	
+7 10%	+73 10%	+67 20%	+122 65%	72	90	614 101

This 1682 son is a derivative of our foundation donor and Pathfinder Cow, Molitor 2720 Irene 9025-1047. This past donor records an astounding record in her time as she produced 8@114 for weaning, 6@111 for yearling while maintaining a birth ratio of 8@100 and 26@100 for IMF. The Confidence dam of T019 has an average birth ratio of 92 on 5 calves and 103 for weaning. Consistent, predictable genetics.

22

D A R Payweight T018

Birth Date: 3-1-2019 Bull 19623212 Tattoo: T018

Basin Payweight 1682
#*17038724
#*Basin Payweight 006S
21AR O Lass 7017

ANGUS GS
Powered by Angus Genetics

Molitor 999 Barbella 098-4022
18052989

*LD Emblazon 999
Molitor 629 Barbella 733-098

#Vermilion Payweight J847
+Basin Lucy 3829
#HARB Pendleton 765 JH
21AR O Lass F24A

#*OCC Emblazon 854E
#*SH Forever Lady 3124 5118
HCC Nebraska 629
Molitor Barbella 5002-733

CW
+54 20%
MARB
+46 60%
RE
+29 85%
FAT
+038 85%

CED	BW	WW	YW	SC	DOC	MILK
+6 50%	+1.4 55%	+78 3%	+133 4%	+1.21 25%	+18 45%	+29 20%
\$EN	\$M	\$W	\$B	ACT BW RATIO	ADJ. WW RATIO	
-22 85%	+61 40%	+90 1%	+124 60%	96	120	589 97

T018 is a larger framed Payweight 1682 with added length. His Emblazon 999 dam was selected from the Molitor Angus program in their 2015 sale. Since then she has been consistent in production as she has turned in 4@100 for weaning and 2@107 for yearling weight performance.

23

D A R Payweight T021

Birth Date: 2-13-2019 Bull *19623205 Tattoo: T021

Basin Payweight 1682
#*17038724
#*Basin Payweight 006S
21AR O Lass 7017

ANGUS GS
Powered by Angus Genetics

DAR Rita Q670
#18564109

Sitz Investment 648B
+*DAR Ms Upshot N842

#Vermilion Payweight J847
+Basin Lucy 3829
#HARB Pendleton 765 JH
21AR O Lass F24A

*Sitz Investment 660Z
Sitz Barbaramere Nell 18U
#*EXAR Upshot 0562B
+44 Ms New Design 8051

CW
+60 10%
MARB
+60 40%
RE
+76 20%
FAT
+020 65%

CED	BW	WW	YW	SC	DOC	MILK
+3 75%	+3.0 85%	+76 4%	+130 5%	+1.68 10%	+10 80%	+27 35%
\$EN	\$M	\$W	\$B	ACT BW RATIO	ADJ. WW RATIO	
-12 55%	+74 10%	+82 4%	+170 10%	88	114	669 110

Payweight T021 is real powerhouse in his general makeup. Big topped, wide based bull with tons of guts and volume. His Investment 648B dam is on pace to reach Pathfinder status in her 1st three calves as she has already turned in weaning data at 2@107. His dam, Q670, is also a maternal sister to the impressive D A R Emerge T039 who sells as Lot 3 in this sale.

Dix Angus Ranch

31

D A R Bow T071

Birth Date: 2-3-2019

Bull *19623180

Tattoo: T071

KM Broken Bow 002

#*16764044

#*Summitcrest Complete 1P55

#Summitcrest Princess 0P12

#CF Right Design 1802

Summitcrest Elba 1M17

Basin Ambush 8161

#Summitcrest Princess 2J10

ANGUSGS

DAR Rita R755

+*18942195

#*Connealy Capitalist 028

+*DAR Rita M703

#*SAV Final Answer 0035

Prides Pita of Conanga 8821

#*Hoover Dam

ACF Rita 0005

CW

+38 60%

MARB

+75 25%

RE

+56 50%

FAT

+003 40%

CED	BW	WW	YW	SC	DOC	MILK
+7 45%	+1.6 60%	+68 15%	+109 30%	+53 70%	+12 70%	+18 95%
\$EN	\$M	\$W	\$B	ACT BW RATIO	ADJ. WW RATIO	
-15 65%	+55 55%	+66 25%	+138 40%	72	99	587 105

A superior calving-ease bull with some maternal promise as his granddam is donor M703, the mother to D A R Woodston.

32

D A R Bow T072

Birth Date: 2-3-2019

Bull *19623181

Tattoo: T072

KM Broken Bow 002

#*16764044

#*Summitcrest Complete 1P55

#Summitcrest Princess 0P12

#CF Right Design 1802

Summitcrest Elba 1M17

Basin Ambush 8161

#Summitcrest Princess 2J10

ANGUSGS

DAR Maxine R705

+*18901319

#*SAV Resource 1441

*DAR Maxine P104

+Rito 707 of Ideal 3407 7075

*SAV Blackcap May 4136

*LD Emblazon 999

*DAR Ms Upgrade N834

CW

+32 75%

MARB

+32 75%

RE

+56 50%

FAT

+002 40%

CED	BW	WW	YW	SC	DOC	MILK
+12 10%	-1.4 10%	+55 50%	+92 60%	+40 75%	+18 45%	+28 25%
\$EN	\$M	\$W	\$B	ACT BW RATIO	ADJ. WW RATIO	
-11 50%	+67 25%	+68 20%	+101 90%	62	86	481 86

T072 is another Broken Bow son with excellent calving ease. He is produced by a full sister to our herd sire Turbo. The Maxine cow family is a major part of the foundation in our program.



D A R Homestead T062 - Lot 33

33

D A R Homestead T062

Birth Date: 2-8-2019

Bull 19606206

Tattoo: T062

Ellingson Homestead 6030

*18543019

#*CTS Remedy 1T01

EA Erica 1082

#Connealy Thunder

CTS 7V03 Bellemere Maid 9T02

#LT Territory 5824 of EA

SAV Alliance 2606

ANGUSGS

Molitor 0018 Dixie 050-667

18684460

#*KG Solution 0018

#Molitor FA Dixie 5004-050

#MOGCK Sure Shot

KG Rito Lady 8724

#*SAV Final Answer 0035

Molitor 704 Dixie 2053-5004

CW

+43 45%

MARB

+34 75%

RE

+53 55%

FAT

+008 45%

CED	BW	WW	YW	SC	DOC	MILK
-1 95%	+1.9 65%	+78 3%	+136 3%	+1.25 20%	+25 15%	+32 10%
\$EN	\$M	\$W	\$B	ACT BW RATIO	ADJ. WW RATIO	
-37 95%	+65 30%	+86 2%	+115 75%	82	106	650 107

Homestead T062 is the lead-off bull of a brand new sire group for us. Added stature and performance easily describes this bull when considering phenomenal power and eye appeal. He will be a crowd pleaser on sale day. His Solution dam was our selection as the top-selling female in the 2017 Molitor Angus Ranch Sale. She's on pace to reach Pathfinder status as she has posted her first two calves with a weaning ratio of 106.

34

D A R Homestead T064

Birth Date: 2-17-2019

Bull *19638732

Tattoo: T064

Ellingson Homestead 6030

*18543019

#*CTS Remedy 1T01

EA Erica 1082

#Connealy Thunder

CTS 7V03 Bellemere Maid 9T02

#LT Territory 5824 of EA

SAV Alliance 2606

ANGUSGS

DAR Blackbird Q607

+*18588003

#*Hoover Dam

Hedgewood Blackbird 022

#*SydGen CC&7

#Erica of Ellston C124

#Sitz Upward 307R

+Circle S Blackbird 7331

CW

+67 3%

MARB

+18 90%

RE

+72 25%

FAT

+0 35%

CED	BW	WW	YW	SC	DOC	MILK
+5 60%	+1.9 65%	+72 10%	+133 4%	+1.32 20%	+26 15%	+31 15%
\$EN	\$M	\$W	\$B	ACT BW RATIO	ADJ. WW RATIO	
-26 90%	+71 15%	+80 5%	+148 25%	78	101	643 105

T064 is another easy find among this set of bulls. He has a fabulous Hoover Dam mother that produced a bull we currently have in our herd sire battery by Hindquarter. Add this bull to your short list if you are looking to make some outstanding performance females.

Dix Angus Ranch

Ellingson Homestead 6030 - Sire of Lots 33-40.



CED	BW	WW	YW	MILK	\$M	\$W	\$B
+3	+1.3	+73	+145	+26	+60	+69	+151

#*CTS Remedy 1T01 x #LT Territory 5824 of EA

35 D A R Homestead T067

Birth Date: 2-11-2019 Bull 19638722 Tattoo: T067

#*CTS Remedy 1T01 Ellingson Homestead 6030 *18543019	#Connealy Thunder CTS 7V03 Bellemere Maid 9T02 #LT Territory 5824 of EA SAV Alliance 2606	CW +62 10%
#*Deer Valley All In DAR Lily M743	#AAR Ten X 7008 SA +*Deer Valley Rita 0274 DAR JD Confidence GB58 DAR CD Lily HD96	MARB +37 70%
		RE +64 35%
		FAT +0.43 90%

CED	BW	WW	YW	SC	DOC	MILK
+9 30%	+4 30%	+68 15%	+125 10%	+1.54 10%	+25 15%	+24 55%
\$EN	\$M	\$W	\$B	ACT BW RATIO	ADJ. WW RATIO	
-23 85%	+65 30%	+70 15%	+146 25%	84	109	655 107

Homestead T067 knocked it out of the park with his DNA profile with a score of 1 for both CED, CEM, and BW. A bigger skeleton on this bull with tremendous eye appeal with his smooth, lengthy makeup. Calving-ease and performance mixed into one great package.

36 D A R Homestead T065 [DDF]

Birth Date: 2-10-2019 Bull 19638737 Tattoo: T065

#*CTS Remedy 1T01 Ellingson Homestead 6030 *18543019	#Connealy Thunder CTS 7V03 Bellemere Maid 9T02 #LT Territory 5824 of EA SAV Alliance 2606	CW +41 50%
#*KG Solution 0018 DAR Dinah Q648 18564106	#MOGCK Sure Shot KG Rito Lady 8724 +*Pine Coulee Powerhouse W112 DAR CD Dinah HF50	MARB +1.03 10%
		RE +16 95%
		FAT +0.61 95%

CED	BW	WW	YW	SC	DOC	MILK
+7 45%	-5 15%	+66 20%	+121 15%	-0.08 95%	+18 45%	+27 35%
\$EN	\$M	\$W	\$B	ACT BW RATIO	ADJ. WW RATIO	
-19 75%	+66 25%	+74 10%	+139 35%	84	109	626 103

A very attractive bull as you approach him from any angle. T065 has a ton of muscle and rib shape as a calving-ease bull. A maternal brother is working at Doane Ranch, Downs, Kansas.



D A R Homestead T065 - Lot 36



37 D A R Homestead T066

Birth Date: 3-1-2019 Bull 19638748 Tattoo: T066

#*CTS Remedy 1T01 Ellingson Homestead 6030 *18543019	#Connealy Thunder CTS 7V03 Bellemere Maid 9T02 #LT Territory 5824 of EA SAV Alliance 2606	CW +18 95%
#*EXAR Upshot Q562B DAR Dinah O436 17984016	#Sitz Upward 307R +*EXAR Barbara T020 +*Gardens Prime Star CRD Dinah 4150	MARB +79 20%
		RE +14 95%
		FAT +0.70 95%

CED	BW	WW	YW	SC	DOC	MILK
+8 35%	+3 30%	+46 80%	+80 80%	-38 95%	+17 50%	+17 95%
\$EN	\$M	\$W	\$B	ACT BW RATIO	ADJ. WW RATIO	
+11 5%	+70 15%	+44 80%	+95 95%	84	105	498 82

The most moderate son in the Homestead sire group. T066 could be deemed as one of the most stylish bulls as he walks out across the pen. He is another one to add to your list of good heifer bull prospects.

38 D A R Homestead T063

Birth Date: 1-27-2019 Bull *19638727 Tattoo: T063

#*CTS Remedy 1T01 Ellingson Homestead 6030 *18543019	#Connealy Thunder CTS 7V03 Bellemere Maid 9T02 #LT Territory 5824 of EA SAV Alliance 2606	CW +48 30%
#*Connealy Capitalist 028 DAR Rita R754 *18942194	#SAV Final Answer 0035 Prides Pita of Conanga 8821 +*Hoover Dam ACF Rita 0005	MARB +45 60%
		RE +56 50%
		FAT +0.61 95%

CED	BW	WW	YW	SC	DOC	MILK
+12 10%	+1 25%	+61 30%	+113 20%	+19 85%	+27 10%	+30 15%
\$EN	\$M	\$W	\$B	ACT BW RATIO	ADJ. WW RATIO	
-16 65%	+63 35%	+72 15%	+133 45%	74	101	601 108

T063 is a very complete Homestead son that simply puts together a nice package. His pedigree stacks up for soundness, depth, and eye appeal for generations. M703 and Rita 0005 both served as donors in our program.

39 D A R Homestead T069

Birth Date: 1-28-2019 Bull 19637100 Tattoo: T069

#*CTS Remedy 1T01 Ellingson Homestead 6030 *18543019	#Connealy Thunder CTS 7V03 Bellemere Maid 9T02 #LT Territory 5824 of EA SAV Alliance 2606	CW +45 40%
*GDAR Leupold 298 DAR Chloe R747 18919040	#AAR Leupold 0578 *GDAR Miss Blackcap 9232 DAR JD Confidence GB58 #DAR CD Missy Chloe IC22	MARB +41 65%
		RE +10 95%
		FAT +0.01 35%

CED	BW	WW	YW	SC	DOC	MILK
+9 30%	+8 40%	+64 20%	+122 10%	+86 45%	+29 5%	+27 35%
\$EN	\$M	\$W	\$B	ACT BW RATIO	ADJ. WW RATIO	
-25 90%	+72 15%	+67 20%	+130 50%	78	106	527 94

This Homestead son exhibits an outcross for most with his Leupold dam. Simply another one in this sire group that consistently performs and is easy on the eye.

Dix Angus Ranch

40

D A R Homestead T068

Birth Date: 2-27-2019 Bull *19638750 Tattoo: T068

Ellingson Homestead 6030
*18543019
EA Erica 1082

ANGUSGS

DAR Flammette 0453

*17978566

#*CTS Remedy 1T01

#Gardens Prime Star KB20

*Gardens Prime Star KB20

#DAR CD Flame 0035 C047 J197

#Connealy Thunder
CTS 7V03 Bellemere Maid 9T02
#LT Territory 5824 of EA
SAV Alliance 2606

#*Gardens Prime Star
Green Garden Anna FB20
#*SAV Final Answer 0035
Molitor Wn Flammette 608-2047

CW
+57 15%
MARB
+82 20%
RE
+99 5%
FAT
+033 80%

CED	BW	WW	YW	SC	DOC	MILK
+4 70%	+1.4 55%	+71 10%	+126 10%	+1.96 3%	+26 15%	+28 25%
\$EN	\$M	\$W	\$B	ACT BW RATIO	ADJ. WW RATIO	
-24 85%	+67 25%	+78 10%	+172 10%	88	110	638 105

T068 turned in a 105 weaning ratio from his dam from our past high marbling herd sire Prime Star KB20 that we selected as the 3rd high-selling bull in the 2010 Green Garden Angus Sale. He also stems back to our beautiful uddered Pathfinder Cow by Final Answer, DAR CD Flame 0035 C047 J197.

41

D A R Midnight T121

Birth Date: 2-28-2019 Bull *19637689 Tattoo: T121

DAR Midnight 6050

+*18574077

ANGUSGS

DAR Irene Q662

*18588055

#*Connealy Black Granite

+*Hedgewood Rita 301

*LD Emblazon 999

+*DAR Irene N805

#*Connealy Consensus 7229

#Eura Elga of Conanga 9109

#*Connealy Capitalist 028

+Hedgewood Rita 521

#*OCC Emblazon 854E

#*SH Forever Lady 3124 5118

#*Styles Upgrade J59

#Molitor 2720 Irene 9025-1047

CW
+44 40%
MARB
+62 40%
RE
+57 45%
FAT
+062 95%

CED	BW	WW	YW	SC	DOC	MILK
+15 2%	-3.0 1%	+63 25%	+115 20%	+28 80%	+28 10%	+20 85%
\$EN	\$M	\$W	\$B	ACT BW RATIO	ADJ. WW RATIO	
-19 75%	+60 40%	+65 25%	+122 65%	54	71	551 100

The first son by Midnight is one of the real curve benders in this offering. He turned single digit scores for CED, BW, YW, and Docility on his AngusGS profile. Outstanding heifer bull candidate that offers some punch at the end. He also traces back to the outstanding foundation Pathfinder Cow in the herd Molitor Irene 1047 who turned in an impressive 8 weaning record to average 114 ratio.



D A R Midnight T121 - Lot 41

42

D A R Midnight T098

Birth Date: 2-26-2019 Bull *19606217 Tattoo: T098

DAR Midnight 6050

+*18574077

ANGUSGS

DAR Rita Q624

+*18588161

#*Connealy Black Granite

+*Hedgewood Rita 301

#*RB Tour Of Duty 177

+*Hedgewood Rita 137

#*Connealy Consensus 7229

#Eura Elga of Conanga 9109

#*Connealy Capitalist 028

+Hedgewood Rita 521

#*Werner War Party 2417

+*BA Lady 6807 305

#Sitz Upward 307R

+Hedgewood Rita 707

CW
+63 5%
MARB
+38 70%
RE
+65 35%
FAT
+035 85%

CED	BW	WW	YW	SC	DOC	MILK
+8 35%	+5 35%	+76 4%	+130 5%	-28 95%	+25 15%	+28 25%
\$EN	\$M	\$W	\$B	ACT BW RATIO	ADJ. WW RATIO	
-34 95%	+55 55%	+84 3%	+152 20%	82	106	658 108

Another good heifer bull by Midnight. He has a double-digit CED to combine with his 108 weaning weight ratio. His tremendous Tour of Duty dam has jumped out to a great start in her early production career as she's averaged 107 WW ratio on her first two calves. T098 is a very quite bull in his demeanor for easily handling.



D A R Hindquarter T047 - Lot 43

43

D A R Hindquarter T047

Birth Date: 3-1-2019 Bull *19606229 Tattoo: T047

HARB Hindquarter 473 JH

*18033745

ANGUSGS

DAR Maxine R733

*18919045

+HARB Stur-D 191 JH

+HARB Princess Vel 980 JH

*HA Cowboy Up 5405

*DAR Ms Upgrade N834

#+Leachman Right Time

#HARB Black Lady 073 JH

#*Connealy Onward

#HARB Princess Vel 36 JH

*HA Outside 3008

#*HA Blackcap Lady 1602

#*Styles Upgrade J59

+BJ Objective 8212

CW
+45 40%
MARB
+41 65%
RE
+57 45%
FAT
+006 45%

CED	BW	WW	YW	SC	DOC	MILK
+14 4%	+1.2 50%	+73 10%	+114 20%	+25 85%	+23 20%	+28 25%
\$EN	\$M	\$W	\$B	ACT BW RATIO	ADJ. WW RATIO	
-19 75%	+78 4%	+85 2%	+106 85%	72	99	622 111

T047 opens the gate back up to the Hindquarter pen. He will be one of the highest YW bulls in the offering as his Cowboy Up dam from the Maxine cow family is the highest performance EPD cow in our herd who turned in a 112 WW ratio on her first calf. The granddam of T047, Maxine N834, also produced the star herd sire working in the Molitor Angus program, D A R Pay Upgrade Q807.

44

D A R Hindquarter T043

Birth Date: 3-18-2019 Bull 19606208 Tattoo: T043

HARB Hindquarter 473 JH

*18033745

ANGUSGS

DAR Blackcap 0413

17995800

+HARB Stur-D 191 JH

+HARB Princess Vel 980 JH

8N Upstart 102

DAR Blackcap M725

#+Leachman Right Time

#HARB Black Lady 073 JH

#*Connealy Onward

#HARB Princess Vel 36 JH

#Sitz Upward 307R

CCA Blackcap 803

#*Hoover Dam

#DAR JD BkcapGC47 C070 J166

CW
+42 45%
MARB
+49 55%
RE
+75 25%
FAT
+037 85%

CED	BW	WW	YW	SC	DOC	MILK
+9 30%	+1 25%	+66 20%	+106 35%	+89 45%	+25 15%	+35 4%
\$EN	\$M	\$W	\$B	ACT BW RATIO	ADJ. WW RATIO	
-26 90%	+69 20%	+84 3%	+108 80%	74	93	641 105

Hindquarter T043 is a wide based, big butted, calving ease bull that is produced by an Upstart daughter that has recorded 4@104 for weaning. He's an eye grabbing bull that is stacked with a maternal pedigree.



D A R Midnight T098 - Lot 42

Dix Angus Ranch



D A R Hindquarter T048 - Lot 45

45		Birth Date: 2-21-2019	Bull 19606228	Tattoo: T048		
HARB Hindquarter 473 JH *18033745 ANGUS DAR Pride R710 18903279		#HARB Stur-D 191 JH #HARB Princess Vel 980 JH #*Basin Payweight 1682 DAR Pride O484		#Leachman Right Time #HARB Black Lady 073 JH #*Connealy Onward #HARB Princess Vel 36 JH #*Basin Payweight 006S 21AR O Lass 7017 #*Hoover Dam DAR Pride L472		CW +41 50% MARB +78 25% RE +48 60% FAT +0.60 95%
		CED	BW	WW	YW	SC
		+14 4%	+8 40%	+72 10%	+120 15%	+57 65%
		\$EN	\$M	\$W	\$B	ACT BW RATIO
		-20 80%	+76 10%	+79 5%	+123 60%	72 99 593 106

T048 combines a neat pedigree with Hindquarter x Payweight 1682. He exhibits the tremendous depth and muscles as the Payweight derivatives oftentimes do, with the added performance of HQ as he weighed in with a 107 WW ratio.

46		Birth Date: 3-1-2019	Bull 19606225	Tattoo: T044		
HARB Hindquarter 473 JH *18033745 ANGUS DAR Lady O478 #18104193		#HARB Stur-D 191 JH #HARB Princess Vel 980 JH #*Hoover Dam Dar Lady L454		#Leachman Right Time #HARB Black Lady 073 JH #*Connealy Onward #HARB Princess Vel 36 JH #*SydGen CC&7 #Erica of Ellston C124 Gardens Next Wave HE17 DAR JD Lady USPB F923 J190		CW +54 20% MARB +82 20% RE +63 40% FAT +0.61 95%
		CED	BW	WW	YW	SC
		+15 2%	-1 25%	+72 10%	+124 10%	+33 80%
		\$EN	\$M	\$W	\$B	ACT BW RATIO
		-27 90%	+82 2%	+94 1%	+143 30%	74 93 633 104

Maternal excellence at its best as this HQ was produced by one of the best Hoover Dam daughters in the herd as she has recorded 4@106 WW ratio, one being the top ratio heifer calf in the herd in 2017 by Sitz Investment 648B.

HARB Hindquarter 473 JH - Sire of Lots 43-50.



CED	BW	WW	YW	MILK	\$M	\$W	\$B
+16	+3	+76	+124	+28	+75	+86	+113

+HARB Stur-D 191 JH x #*Connealy Onward

47		Birth Date: 4-3-2019	Bull 19606226	Tattoo: T050		
HARB Hindquarter 473 JH *18033745 ANGUS DAR Queen O447 #17983917		#HARB Stur-D 191 JH #HARB Princess Vel 980 JH #*EF Complement 8088 Mill Brae 1961 Queen 9180		#Leachman Right Time #HARB Black Lady 073 JH #*Connealy Onward #HARB Princess Vel 36 JH #Basin Franchise P142 #EF Everelda Entense 6117 #*HSAF Bando 1961 Mill Brae Queen RDA 2062		CW +37 60% MARB +38 70% RE +42 70% FAT +0.43 90%
		CED	BW	WW	YW	SC
		+13 10%	+0 25%	+63 25%	+109 30%	-30 95%
		\$EN	\$M	\$W	\$B	ACT BW RATIO
		-29 95%	+53 65%	+69 20%	+106 85%	74 93 678 111

T050 was created by a very productive Pathfinder Cow by EF Complement with a record of 4@107 for WW. T050 will be an excellent heifer bull candidate with his double-digit CED and sub-zero BW EPDs

48		Birth Date: 3-30-2019	Bull *19606230	Tattoo: T046		
HARB Hindquarter 473 JH *18033745 ANGUS DAR Blackcap M760 17464409		#HARB Stur-D 191 JH #HARB Princess Vel 980 JH #*Connealy Contrast Eagle Blackcap 117T		#Leachman Right Time #HARB Black Lady 073 JH #*Connealy Onward #HARB Princess Vel 36 JH #Connealy Danny Boy #Doris of Conanga 669 #RAB-EGE Blue Moon R3204 #Eagle 4049 Blackcap P4579		CW +50 25% MARB +57 45% RE +68 30% FAT +0.54 95%
		CED	BW	WW	YW	SC
		+8 35%	+1.6 60%	+66 20%	+121 15%	+2.23 1%
		\$EN	\$M	\$W	\$B	ACT BW RATIO
		-26 90%	+55 55%	+72 15%	+139 35%	84 105 598 98

This M760, a Contrast daughter, has produced some other really good sons in her past as one is working at Shooting Star Ranch in Idaho and another for Anthony and Danielle Johnston, Alton, Kansas. There are also 2 sisters to T046 that have a WW ratio of 103 on 3, while the factory, M760, recorded 5@105 at the same time as having all five average 92 for BW ratio.

49		Birth Date: 1-31-2019	Bull *19621823	Tattoo: T045		
HARB Hindquarter 473 JH *18033745 ANGUS DAR Rita R753 +18942192		#HARB Stur-D 191 JH #HARB Princess Vel 980 JH #*Connealy Capitalist 028 *DAR Rita M703		#Leachman Right Time #HARB Black Lady 073 JH #*Connealy Onward #HARB Princess Vel 36 JH #*SAV Final Answer 0035 Prides Pita of Conanga 8821 #*Hoover Dam ACF Rita 0005		CW +46 35% MARB +48 55% RE +54 50% FAT +0.28 75%
		CED	BW	WW	YW	SC
		+13 10%	+1.1 45%	+68 15%	+119 15%	+2.9 80%
		\$EN	\$M	\$W	\$B	ACT BW RATIO
		-12 55%	+72 15%	+72 15%	+127 55%	80 109 548 98

T045 is another HQ son produced by a nice uddered Capitalist daughter by the great M703 donor. This pedigree is stacked with calving-ease, consistency, and structural soundness.

50		Birth Date: 3-21-2019	Bull 19606224	Tattoo: T051		
HARB Hindquarter 473 JH *18033745 ANGUS DAR Jilt M723 17464418		#HARB Stur-D 191 JH #HARB Princess Vel 980 JH #*Hoover Dam DAR CD Jilt HA40		#Leachman Right Time #HARB Black Lady 073 JH #*Connealy Onward #HARB Princess Vel 36 JH #*SydGen CC&7 #Erica of Ellston C124 #Hunts Calculator 2720 Green Garden Jilt A041 S1		CW +43 45% MARB +73 30% RE +47 65% FAT +0.30 80%
		CED	BW	WW	YW	SC
		+10 20%	+1.2 50%	+60 35%	+99 45%	+76 50%
		\$EN	\$M	\$W	\$B	ACT BW RATIO
		-18 75%	+73 10%	+74 10%	+129 50%	82 103 624 102

The final Hindquarter son of the day is from a very productive female line, Hoover Dam x Hunts Calculator 2720. His dam has produced 6@97 for BW and 6@101 at weaning.

Dix Angus Ranch



D A R 38 Special T026 - Lot 51

51 D A R 38 Special T026

Birth Date: 2-13-2019 Bull 19639867 Tattoo: T026

Baldridge 38 Special
+*18229487
*EF Commando 1366
*Baldridge Isabel Y69

ANGUS
GSS
Growth, Stayability, Soundness

HARB Black Lady D80 JH
18638310
#HARB Hindquarter 473 JH
#HARB Black Lady Z70 JH

#*EF Complement 8088
Riverbend Young Lucy W1470
#*Styles Upgrade J59
+Baldridge Isabel T935

+HARB Stur-D 191 JH
#HARB Princess Vel 980 JH
#Connealy Right Answer 746
#HARB Black Lady W88 JH

CW
+63 5%
MARB
+58 45%
RE
+51 55%
FAT
+028 75%

CED		BW		WW		YW		SC		DOC		MILK	
+7	45%	+1.4	55%	+90	1%	+141	2%	+82	50%	+27	10%	+30	15%
\$EN		\$M		\$W		\$B		ACT BW	RATIO	ADJ. WW	RATIO		
-35	95%	+71	15%	+104	1%	+143	30%	76	101	706	120		

This Baldridge 38 Special son is one of the most impressive bulls in the entire sale that was produced by a Hindquarter daughter. His dam Black Lady D80 is on pace to reach Pathfinder in her first 3 calves which would make 5 consecutive generations of Pathfinder Dams in this pedigree. This is also the same cow family that produced the GENEX Pathfinder Sire HARB Pendleton 765 JH who produced \$1 million in semen sales. HERD BULL!

52 D A R 38 Special T025

Birth Date: 3-2-2019 Bull 19639868 Tattoo: T025

Baldridge 38 Special
+*18229487
*EF Commando 1366
*Baldridge Isabel Y69

ANGUS
GSS
Growth, Stayability, Soundness

HARB Princess Vel B82 JH
18046774
+HARB Stur-D 191 JH
HARB Princess Vel Y73 JH

#*EF Complement 8088
Riverbend Young Lucy W1470
#*Styles Upgrade J59
+Baldridge Isabel T935

#Leachman Right Time
#HARB Black Lady 073 JH
#*Kesslers Frontman R001
#HARB Princess Vel 988 JH

CW
+35 65%
MARB
+59 45%
RE
+60 40%
FAT
+033 80%

CED		BW		WW		YW		SC		DOC		MILK	
+14	4%	-2.1	3%	+60	35%	+95	55%	+87	45%	+19	40%	+36	3%
\$EN		\$M		\$W		\$B		ACT BW		RATIO		ADJ. WW RATIO	
-4	30%	+88	1%	+88	2%	+109	80%	72	92	621	106		

Another great 38 Special calving ease bull that is produced from the best cow family on the ranch. His dam is sired by the \$50,000 top-selling bull at the 2012 Midland Bull Test, HARB Stur-D 191 JH. She also combines two of the best dams from the Harrison Ranch, Black Lady 073 (granddam of Pendleton) and Princess Vel 36 (dam of GENEX Pathfinder Sire HARB Denali 788).

53 D A R Compass T023

Birth Date: 2-19-2019 Bull 19636664 Tattoo: T023

Baldridge Compass C041
+*18229488
*EF Commando 1366
*Baldridge Isabel Y69

ANGUS
GSS
Growth, Stayability, Soundness

DAR Pride Q693
18728723
*HARB Hindquarter 473 JH
DAR Pride O449

#*EF Complement 8088
Riverbend Young Lucy W1470
#*Styles Upgrade J59
+Baldridge Isabel T935

+HARB Stur-D 191 JH
#HARB Princess Vel 980 JH
#*Jindra Double Vision
DAR CD Pride E242 D331 J192

CW
+54 20%
MARB
+58 45%
RE
+60 40%
FAT
+043 90%

CED		BW		WW		YW		SC		DOC		MILK	
+12	10%	+9	40%	+65	20%	+117	15%	-49	95%	+16	55%	+29	20%
\$EN		\$M		\$W		\$B		ACT BW	RATIO	ADJ. WW	RATIO		
-22	85%	+75	10%	+73	15%	+131	50%	78	101	671	110		

Compass T023 will blow you away with his power and volume. He is the thickest ended bull in the offering, produced by a tremendous Hindquarter daughter. He is stacked up with performance and soundness of his 3rd generation sire is Jindra Double Vision. T023 is bound to produce scale smashing performance as well as the kind of daughters to build a herd around! Don't miss this Performance King.



D A R Compass T023 - Lot 53

Dix Angus Ranch



D A R Compass T024 - Lot 54

54

D A R Compass T024

Birth Date: 2-3-2019 Bull 19658784 Tattoo: T024

*EF Commando 1366
Baldridge Compass C041
+*18229488
*Baldridge Isabel Y69

HARB Horsepower 561 JH
DAR Sophie R769
19653479
DAR Sophie O408
#*PA Power Tool 9108
#HARB Frances 770 JH
8N Upstart 102
DAR Sophie M727

CED		BW		WW		YW		SC		DOC		MILK	
+12	10%	-1	25%	+65	20%	+116	20%	N/A	N/A	N/A	N/A	+31	15%
\$EN		\$M		\$W		\$B		ACT BW RATIO		ADJ. WW RATIO			
-23	85%	+71	15%	+71	15%	+149	25%	70	96	635	114		

T024 is another calving ease Compass that was produced by a beautiful daughter of our in-house herd sire HARB Horsepower 561 JH who produced the high-selling bull in the history of the program to Lundgren Angus Ranch.

BUBS Southern Charm AA31 - Sire of Lots 55 and 56.



CED	BW	WW	YW	MILK	\$M	\$W	\$B
+3	+3.1	+67	+113	+29	+60	+71	+177

***Silveiras Conversion 8064 x #*Connealy Stimulus 8419**

55

D A R Charm T095

Birth Date: 2-10-2019 Bull 19623306 Tattoo: T095

*Silveiras Conversion 8064
BUBS Southern Charm AA31
*17853196
*Hickory Hill Erica 009

*HARB Hindquarter 473 JH
DAR Rita Q677
18564111
*DAR Rita O425
#*BT Crossover 758N
+EXG Saras Dream S609 R3
#*Connealy Stimulus 8419
Hickory Hill Erica TA32
+HARB Stur-D 191 JH
#*HARB Princess Vel 980 JH
#*EF Complement 8088
+Daltons Rita 911

CED		BW		WW		YW		SC		DOC		MILK	
+12	10%	-7	15%	+47	75%	+82	80%	+1.68	10%	+13	65%	+41	1%
\$EN		\$M		\$W		\$B		ACT BW		RATIO		ADJ. WW RATIO	
-5	35%	+65	30%	+72	15%	+133	45%	78	101	582	95		

Charm T095 is the first of our sons by BUBS Southern Charm. This calving ease bull shows his dimension in his hind leg. He is a nicely balanced bull out of Hindquarter daughter. His granddam has weaning 4 calves to average 103.

56

D A R Charm T031

Birth Date: 2-24-2019 Bull 19652372 Tattoo: T031

*Silveiras Conversion 8064
BUBS Southern Charm AA31
*17853196
*Hickory Hill Erica 009

ANGUSGS
Powered by Angus Genetics

HARB Idol 112
HARB RCA Princess Vel C6 JH
18377230
HARB RCA Princess Vel 92

#*BT Crossover 758N
+EXG Saras Dream S609 R3
#*Connealy Stimulus 8419
Hickory Hill Erica TA32

#*HARB Icon 019
HARB Lady Camillia 802
#Nichols Extra K205
#HARB Princess Vel 21 RCA

CW
+37 60%
MARB
+85 20%
RE
+64 35%
FAT
+057 95%

CED		BW		WW		YW		SC		DOC		MILK	
+6	50%	+1.3	50%	+55	50%	+89	65%	+1.03	35%	+20	35%	+32	10%
\$EN		\$M		\$W		\$B		ACT BW		RATIO		ADJ. WW RATIO	
+7	10%	+88	1%	+75	10%	+146	25%	80	104	557	95		

T031 is another Charm son that ranks in the top 1% for \$Maternal. He will be one of the higher marbling bulls in the offering as well. His granddam is one of the most prolific cows in the herd and has a perfect udder.



D A R Charm T031 - Lot 56

57

D A R Coal Train T110

Birth Date: 2-19-2019 Bull 19644493 Tattoo: T110

*Boyd Signature 1014
Deer Valley Coal Train 41157
*18030488
Long Erica 208

ANGUSGS
Powered by Angus Genetics

*HARB Hindquarter 473 JH
HARB Jerica D82 JH
18638315
HARB Jerica Y83 JH

#*Kesslers Frontman R001
*Boyd Erica Dianna 9054
#*SAV Final Answer 0035
Thomas Erica 4561

+HARB Stur-D 191 JH
#*HARB Princess Vel 980 JH
#*Kesslers Frontman R001
HARB Jerica 871 JH

CW
+53 20%
MARB
+34 75%
RE
+69 30%
FAT
+025 70%

CED	BW	WW	YW	SC	DOC	MILK	
+2 85%	+1.8 65%	+71 10%	+125 10%	+1.01 35%	+13 65%	+34 5%	
\$EN	\$M	\$W	\$B	ACT BW	RATIO	ADJ. WW	RATIO
-35 95%	+33 95%	+81 4%	+137 40%	74	99	622	106

Coal Train T110 is the highest performing son of his sire group produced by an outstanding Hindquarter daughter. T110 is a larger framed bull with more than average length of body.



D A R Coal Train T110 - Lot 57

Dix Angus Ranch



D A R Coal Train T108 - Lot 58

58

D A R Coal Train T108

Birth Date: 2-16-2019 Bull 19630069 Tattoo: T108

*Boyd Signature 1014
Deer Valley Coal Train 41157
*18030488 Long Erica 208

*Kesslers Frontman R001
*Boyd Erica Dianna 9054
*SAV Final Answer 0035
Thomas Erica 4561

ANGUS GS

+HARB Stur-D 191 JH
HARB Princess Vel B69 JH
18037480 #HARB Princess Vel W89 JH

#Leachman Right Time
#HARB Black Lady 073 JH
*Connealy Onward
#HARB Princess Vel 36 JH

CED	BW	WW	YW	SC	DOC	MILK
+8 35%	+7 40%	+60 35%	+107 30%	+58 65%	+15 60%	+32 10%
\$EN	\$M	\$W	\$B	ACT BW RATIO	ADJ. WW RATIO	
-12 55%	+50 70%	+74 10%	+116 70%	88	110	681 112

T108 is the calving-ease bull of the four Coal Train sons in the sale. As you look into his pedigree you will see that his dam is a full sister-in-blood to HARB Hindquarter. In his three-generation pedigree you will find 7 Pathfinder Cows. Quality bred for generations!

59

D A R Coal Train T109

Birth Date: 2-17-2019 Bull 19630068 Tattoo: T109

*Boyd Signature 1014
Deer Valley Coal Train 41157
*18030488 Long Erica 208

*Kesslers Frontman R001
*Boyd Erica Dianna 9054
*SAV Final Answer 0035
Thomas Erica 4561

ANGUS GS

*Kesslers Frontman R001
HARB Princess Vel Y73 JH
17139743 #HARB Princess Vel 988 JH

#Connealy Front Page 0228
Kesslers Bell 0024
*Connealy Onward
#HARB Princess Vel 36 JH

CED	BW	WW	YW	SC	DOC	MILK
+5 60%	+2.0 70%	+56 45%	+111 25%	+93 40%	+15 60%	+40 1%
\$EN	\$M	\$W	\$B	ACT BW RATIO	ADJ. WW RATIO	
-17 70%	+60 40%	+71 15%	+136 40%	90	113	599 98

Coal Train T109 is produced by a real power cow by Frontman. He's a very eye appealing bull from the popular Princess Vel cow family. He should produce progeny that will really take off and grow as well as be outstanding cows with a lot of longevity.



D A R Coal Train T109 - Lot 59

60

D A R Whitlock T092

Birth Date: 3-1-2019 Bull *19652258 Tattoo: T092

S Whitlock 179
*17007891

*S Chisum 6175
#S Pride Anna 709

S Alliance 3313
#S Gloria 464
#R&S Expedition 1404
#S Pride Anna 567

ANGUS GS

DAR Maxine P104
*18244844

*LD Emblazon 999
*DAR Ms Upgrade N834

#+OCC Emblazon 854E
#+SH Forever Lady 3124 5118
*Styles Upgrade J59
+BJ Objective 8212

CW
+59 10%
MARB
+61 40%
RE
+49 60%
FAT
+0.87 95%

CED	BW	WW	YW	SC	DOC	MILK
+11 15%	-1.0 10%	+78 3%	+134 4%	+59 65%	+29 5%	+26 40%
\$EN	\$M	\$W	\$B	ACT BW RATIO	ADJ. WW RATIO	
-30 95%	+56 55%	+87 2%	+122 65%	82	100	697 106

Whitlock T092 is one of the best bulls in the pen. A long sided, deep ribbed bull with as topline a level as you can get and packed with muscle in his hind end. He is out of the best cow that we have ever raised on the ranch and when viewed from an EPD/phenotype standpoint he simply does it all. He is a maternal brother to D A R Turbo R146. Other maternal brothers are working at Weltmer Farms and Govert Farms, Kansas. DON'T MISS A GREAT ONE!



D A R Whitlock T092 - Lot 60



D A R Whitlock T090 - Lot 61

61

D A R Whitlock T090

Birth Date: 2-27-2019 Bull 19652262 Tattoo: T090

S Whitlock 179
*17007891

*S Chisum 6175
#S Pride Anna 709

S Alliance 3313
#S Gloria 464
#R&S Expedition 1404
#S Pride Anna 567

ANGUS GS

DAR Velda M724
*18068613

*Styles Upgrade J59
#DAR JD Velda IF21

#Sitz Upward 307R
Plainview Lassie 71B
JDI New Design 208-5902
Bairds Velda Q22

CW
+63 5%
MARB
+0 95%
RE
+46 65%
FAT
-.001 35%

CED	BW	WW	YW	SC	DOC	MILK
+3 75%	+2 30%	+75 4%	+134 4%	+1.77 5%	+28 10%	+23 65%
\$EN	\$M	\$W	\$B	ACT BW RATIO	ADJ. WW RATIO	
-23 85%	+61 40%	+79 5%	+119 65%	86	108	611 100

T090 is another Whitlock son with a tremendous background of solid proof. His Pathfinder Dam has weaned 6 calves at 109, while his Pathfinder Granddam and member of donor program has recorded 8@116!

Dix Angus Ranch

62

D A R Whitlock T094

Birth Date: 2-27-2019 Bull 19652263 Tattoo: T094

S Whitlock 179
#*17007891

ANGUS GS
Powered by Regis Livestock

DAR Ever Entense 0430

+*18001720

#*S Chisum 6175

#S Pride Anna 709

#*Summitcrest Focus 2U66

+*Spruce Mtn Ever Entense 1016

S Alliance 3313

#S Gloria 464

#R&S Expedition 1404

#S Pride Anna 567

#*Mytty In Focus

Summitcrest Elba 1M17

#21AR Roundup 7005

+*SMR Ever Entense 7675

CW

+51 25%

MARB

+62 40%

RE

+26 90%

FAT

+065 95%

CED	BW	WW	YW	SC	DOC	MILK
+10 20%	-4 20%	+66 20%	+119 15%	+76 50%	+26 15%	+32 10%
\$EN	\$M	\$W	\$B	ACT BW	RATIO	ADJ. WW
-17 70%	+71 15%	+81 4%	+133 45%	80	100	609 100

Lot 62 is another calving ease specialist by S Whitlock. His dam is a direct daughter of our past donor from Spruce Mountain Ranch, Ever Entense 1016. 0430 has respectively weaned 4 calves with a ratio of 104 while maintaining a calving interval of 373 days.



DAR Ms Upgrade N834 - Dam of Lot 65.

63

D A R Whitlock T091 [OHF]

Birth Date: 3-3-2019 Bull 19652265 Tattoo: T091

S Whitlock 179
#*17007891

ANGUS GS
Powered by Regis Livestock

DAR Pride N824

#17793303

#*S Chisum 6175

#S Pride Anna 709

#*Connealy Contrast

Dar Pride L418

S Alliance 3313

#S Gloria 464

#R&S Expedition 1404

#S Pride Anna 567

#Connealy Danny Boy

#Doris of Conanga 669

#*Gardens Prime Star

DAR JD Pride GE73

CW

+50 25%

MARB

+57 45%

RE

+38 75%

FAT

+056 95%

CED	BW	WW	YW	SC	DOC	MILK
+9 30%	+1 25%	+48 75%	+96 55%	+1.43 15%	+27 10%	+38 2%
\$EN	\$M	\$W	\$B	ACT BW	RATIO	ADJ. WW
-19 75%	+50 70%	+63 30%	+141 35%	84	105	602 99

Whitlock T091 is the son of an impressive Pathfinder Dam by Connealy Contrast as she has nursed 5 calves to average 106 that went on to have ratios of 4@107 for YW, 4@102 for IMF, and 4@106 for RE.

65

D A R Horsepower T083

Birth Date: 4-7-2019 Bull *19606211 Tattoo: T083

HARB Horsepower 561 JH
18339461

ANGUS GS
Powered by Regis Livestock

DAR Ms Upgrade N834

*17590025

#*PA Power Tool 9108

#HARB Frances 770 JH

#*Styles Upgrade J59

+BJ Objective 8212

#*GAR Predestined

*Shamrocks Beebee Queen 3095

#SAV 8180 Traveler 004

HARB Frances Erica 180 SH

#Sitz Upward 307R

Plainview Lassie 71B

#*SS Objective T510 OT26

+BJ Predestined 6082

CW

+35 65%

MARB

+55 45%

RE

+74 25%

FAT

-.036 5%

CED	BW	WW	YW	SC	DOC	MILK
+7 45%	+2.2 70%	+64 20%	+106 35%	-.22 95%	+18 45%	+31 15%
\$EN	\$M	\$W	\$B	ACT BW	RATIO	ADJ. WW
-12 55%	+59 45%	+76 10%	+120 65%	74	93	580 95

T083 is a son of our in-house herd sire HARB Horsepower 561 JH. His dam is a past donor and the anchor of the powerful Maxine cow family. Horsepower is the sire of the highest selling bull in our history.

64

D A R Whitlock T093

Birth Date: 2-25-2019 Bull +*19652266 Tattoo: T093

S Whitlock 179
#*17007891

ANGUS GS
Powered by Regis Livestock

Hedgewood Rita 301

+*17614403

#*S Chisum 6175

#S Pride Anna 709

#*Connealy Capitalist 028

+Hedgewood Rita 521

S Alliance 3313

#S Gloria 464

#R&S Expedition 1404

#S Pride Anna 567

#*SAV Final Answer 0035

Prides Pita of Conanga 8821

#*N Bar Emulation EXT

+Hedgewood Rita 3100 of CC

CW

+71 2%

MARB

-.04 95%

RE

+60 40%

FAT

+005 45%

CED	BW	WW	YW	SC	DOC	MILK
+1 90%	+3.4 90%	+78 3%	+138 3%	+11 90%	+23 20%	+24 55%
\$EN	\$M	\$W	\$B	ACT BW	RATIO	ADJ. WW
-33 95%	+30 95%	+72 15%	+131 50%	86	106	566 86

T093 will sell with one of the highest Yearling Weight EPDs in the sale with +138. He also ranks in the top 2% of the breed for WW and CW. He is a maternal brother to our herd sire DAR Midnight 6050.

66

D A R Horsepower T082

Birth Date: 3-19-2019 Bull *19606223 Tattoo: T082

HARB Horsepower 561 JH
18339461

ANGUS GS
Powered by Regis Livestock

DAR Ever Entense P127

*18292475

#*PA Power Tool 9108

#HARB Frances 770 JH

+*BJ Program 2201

*DAR Ever Entense N828

#*GAR Predestined

*Shamrocks Beebee Queen 3095

#SAV 8180 Traveler 004

HARB Frances Erica 180 SH

#HA Program 5652

+*BJ Objective 8215

8N Upstart 102

+*Spruce Mtn Ever Entense 1016

CW

+48 30%

MARB

+75 25%

RE

+75 25%

FAT

+019 65%

CED	BW	WW	YW	SC	DOC	MILK
+9 30%	+1.6 60%	+63 25%	+114 20%	+9.2 40%	+18 45%	+32 10%
\$EN	\$M	\$W	\$B	ACT BW	RATIO	ADJ. WW
-19 75%	+59 45%	+74 10%	+159 15%	100	126	664 109

Horsepower T082 was raised by a real production cow by the high-selling bull in the 2014 BJ Angus Bull Sale, BJ Program 2201, with a record of 3@107 for WW and 2@108 for YW, 2@112 IMF, 2@108 RE.



Dix Angus Ranch



D A R Niagara T073 - Lot 67

67

D A R Niagara T073

Birth Date: 2-25-2019 Bull +*19664571 Tattoo: T073

SS Niagara Z29
*17287387

#*Hoover Dam

Jet SS X144

#*SydGen CC&7
#Erica of Ellston C124
#*B/R New Day 454
JET SS T151

ANGUS6S
Powered by Nenggen Genosys

#*Connealy Consensus 7229

HARB Princess Vel Z88 JH
*17456565

#*HARB Princess Vel 980 JH

#*Connealy Consensus
Blue Lilly of Conanga 16
#*Connealy Onward
#HARB Princess Vel 36 JH

CW
+58 10%
MARB
+74 25%
RE
+61 40%
FAT
+019 65%

CED	BW	WW	YW	SC	DOC	MILK
+11 15%	+3 30%	+71 10%	+130 5%	+1.13 30%	+18 45%	+33 10%
\$EN	\$M	\$W	\$B	ACT BW	RATIO	ADJ. WW
-40 95%	+53 65%	+81 4%	+153 20%	76	100	568 100

This Niagara son is a real powerhouse with a ton of rib shape and base width. He will add scale-crushing progeny in his future. He is a maternal brother to Lot 9 and flush brothers to Lot 68 and 69. Produced by a sister to Hindquarter. This Niagara son is a real powerhouse with a ton of rib shape and base width. He will add scale-crushing progeny in his future. He is a maternal brother to Lot 9 and flush brothers to Lot 68 and 69. Produced by a sister to Hindquarter.

69

D A R Niagara T074

Birth Date: 2-24-2019 Bull +*19664569 Tattoo: T074

SS Niagara Z29
*17287387

#*Hoover Dam

Jet SS X144

#*SydGen CC&7
#Erica of Ellston C124
#*B/R New Day 454
JET SS T151

ANGUS6S
Powered by Nenggen Genosys

#*Connealy Consensus 7229

HARB Princess Vel Z88 JH
*17456565

#*HARB Princess Vel 980 JH

#*Connealy Consensus
Blue Lilly of Conanga 16
#*Connealy Onward
#HARB Princess Vel 36 JH

CW
+32 75%
MARB
+75 25%
RE
+27 90%
FAT
+022 65%

CED	BW	WW	YW	SC	DOC	MILK
+14 4%	-7 15%	+60 35%	+111 25%	+1.35 20%	+21 30%	+30 15%
\$EN	\$M	\$W	\$B	ACT BW	RATIO	ADJ. WW
-19 75%	+72 15%	+71 15%	+117 70%	78	100	702 100

The third brother from a tremendous flush of Niagara calves. The heifer mates are the best in the replacement pen. Out of the famous Princess Vel cow family and power cow Z88 by Consensus 7229 who has a perfect udder. The third brother from a tremendous flush of Niagara calves. The heifer mates are the best in the replacement pen. Out of the famous Princess Vel cow family and power cow Z88 by Consensus 7229 who has a perfect udder.

68

D A R Niagara T075

Birth Date: 3-3-2019 Bull +*19664570 Tattoo: T075

SS Niagara Z29
*17287387

#*Hoover Dam

Jet SS X144

#*SydGen CC&7
#Erica of Ellston C124
#*B/R New Day 454
JET SS T151

ANGUS6S
Powered by Nenggen Genosys

#*Connealy Consensus 7229

HARB Princess Vel Z88 JH
*17456565

#*HARB Princess Vel 980 JH

#*Connealy Consensus
Blue Lilly of Conanga 16
#*Connealy Onward
#HARB Princess Vel 36 JH

CW
+63 5%
MARB
+44 60%
RE
+74 25%
FAT
+013 55%

CED	BW	WW	YW	SC	DOC	MILK
+9 30%	+1.2 50%	+79 2%	+142 2%	+1.54 10%	+30 4%	+28 25%
\$EN	\$M	\$W	\$B	ACT BW	RATIO	ADJ. WW
-46 95%	+60 40%	+82 4%	+150 25%	86	100	620 100

Another stout made Niagara x Z88 with extra stretch to his profile while being a larger framed bull than his brothers. Flush brother to Lots 67 and 69, maternal brother to Lot 9. Another stout made Niagara x Z88 with extra stretch to his profile while being a larger framed bull than his brothers. Flush brother to Lots 67 and 69, maternal brother to Lot 9.

SS Niagara Z29 - Sire of Lots 67-71.



CED	BW	WW	YW	MILK	\$M	\$W	\$B
+5	+9	+70	+138	+30	+44	+71	+161

#*Hoover Dam x #*B/R New Day 454

Dix Angus Ranch

70

D A R Niagara T076

Birth Date: 1-31-2019 Bull 19636478 Tattoo: T076

SS Niagara Z29
*17287387

ANGUS GS
Powered by Regis Genetics

HARB Jerica E74 JH
19050546

#*Hoover Dam
Jet SS X144

*HARB Hindquarter 473 JH

HARB Jerica Y74 JH

#*SydGen CC&7
#Erica of Ellston C124
#*B/R New Day 454
JET SS T151

+HARB Stur-D 191 JH
#*HARB Princess Vel 980 JH
#TC Aberdeen 759
HARB Jerica 972 JH

CW
+50 25%
MARB
+55 45%
RE
+73 25%
FAT
+0.16 60%

CED	BW	WW	YW	SC	DOC	MILK
+4 70%	+2.5 80%	+72 10%	+130 5%	+1.06 35%	+28 10%	+35 4%
\$EN	\$M	\$W	\$B	ACT BW	RATIO	ADJ. WW
-43 95%	+39 95%	+78 10%	+135 40%	76	108	557 95

T076 is a well-balanced Niagara son all the way across the board. Another good bull in the pen from a Hindquarter daughter. His dam is a member of the Jerica cow family that produced the \$60,000 high-selling bull at the 2009 Midland Bull Test, HARB Rick O'Shay 838 JH.

71

D A R Niagara T077 [OWP]

Birth Date: 2-4-2019 Bull 19636480 Tattoo: T077

SS Niagara Z29
*17287387

ANGUS GS
Powered by Regis Genetics

HARB Flora E60 HH
19038223

#*Hoover Dam

Jet SS X144

*HARB Hindquarter 473 JH

HARB Flora Z96 HH

#*SydGen CC&7
#Erica of Ellston C124
#*B/R New Day 454
JET SS T151

+HARB Stur-D 191 JH
#*HARB Princess Vel 980 JH
Lemar Universe 28P
HARB Flora 228 HH

CW
+36 65%
MARB
+45 60%
RE
+81 15%
FAT
-0.003 30%

CED	BW	WW	YW	SC	DOC	MILK
+8 35%	+1 25%	+64 20%	+116 20%	+56 65%	+16 55%	+23 65%
\$EN	\$M	\$W	\$B	ACT BW	RATIO	ADJ. WW
-35 95%	+33 95%	+61 35%	+128 55%	68	97	543 93

T077 is a 3/4 brother to Lot 70. Calving-ease specialist with added ribeye. His sire S S Niagara is one of the most popular bulls in the Select Sires lineup.



D A R Playboy T088 - Lot 72

72

D A R Playboy T088 [OWP]

Birth Date: 2-17-2019 Bull 19649563 Tattoo: T088

HARB Playboy 581 JH
18234809

ANGUS GS
Powered by Regis Genetics

HARB Princess Vel C72 JH
18380073

HARB Idol 112

+HARB Jerica 876 JH

#*PA Power Tool 9108

HARB RCA Princess Vel A5

#*HARB Icon 019
HARB Lady Camillia 802
#*Connealy Onward
+HARB Juanada Erica 280 JH

#*GAR Predestined
*Shamrocks Beebee Queen 3095
*TC Forthright 9284
HARB RCA Princess Vel Y1

CW
+46 35%
MARB
+38 70%
RE
+33 85%
FAT
+0.032 80%

CED	BW	WW	YW	SC	DOC	MILK
+12 10%	+9 40%	+56 45%	+103 40%	+1.48 15%	+17 50%	+29 20%
\$EN	\$M	\$W	\$B	ACT BW	RATIO	ADJ. WW
-6 35%	+63 35%	+66 25%	+129 50%	88	114	618 105

T088 is our first representation of the \$36,000 third high-selling bull of the 2016 Midland Bull Test HARB Playboy 581 JH who resides at Molitor Angus Ranch, Zenda, Kansas. T088 is a super attractive bull when viewed from profile. Double-digit CED bull that will work great of heifers.

73

D A R Playboy T089

Birth Date: 2-16-2019 Bull 19649564 Tattoo: T089

HARB Idol 112
HARB Playboy 581 JH
18234809

ANGUS GS
Powered by Regis Genetics

DAR Flamette P146
18320115

HARB Idol 112

+HARB Jerica 876 JH

#*AAR Ten X 7008 SA

DAR Flamette M738

#*HARB Icon 019
HARB Lady Camillia 802
#*Connealy Onward
+HARB Juanada Erica 280 JH

#*Mytty In Focus
#AAR Lady Kelton 5551
#*Hoover Dam

DAR CD Flame G950 FC47 J163

CW
+8 95%
MARB
+77 25%
RE
+16 95%
FAT
+0.056 95%

CED	BW	WW	YW	SC	DOC	MILK
+18 1%	-2.9 2%	+38 95%	+69 95%	+61 60%	+4 95%	+30 15%
\$EN	\$M	\$W	\$B	ACT BW	RATIO	ADJ. WW
+4 15%	+59 45%	+53 55%	+92 95%	68	86	558 91

T089 is another son of Playboy. He is the definition of "sure-fire" heifer bull with +18 CED and -2.9 BW EPDs. He is the highest \$Energy bull in the offering.



D A R High Life T078 - Lot 74

74

D A R High Life T078

Birth Date: 3-27-2019 Bull 19606220 Tattoo: T078

HARB JH High Life 567
18339456

DAR Hal R763
*19084733

#*VAR Reserve 1111

HARB Wendy 678 JH

#*SAV Resource 1441

+*DAR Ms Upshot N842

#*B/R New Day 454
+*Sandpoint Blackbird 8809
#HARB Windy 702 JH
CAR Wendy 807

+Rito 707 of Ideal 3407 7075
*SAV Blackcap May 4136
#*EXAR Upshot 0562B
+*44 Ms New Design 8051

CW
+39 55%
MARB
+45 60%
RE
+44 70%
FAT
+0.011 50%

CED	BW	WW	YW	SC	DOC	MILK
+1 90%	+3.4 90%	+70 10%	+124 10%	+1.84 45%	+17 50%	+23 65%
\$EN	\$M	\$W	\$B	ACT BW	RATIO	ADJ. WW
-22 85%	+55 55%	+61 35%	+133 45%	88	119	633 113

Lot 74 was produced by one of the favorite young cows in the herd Hal R763. R763 is a direct daughter of the past donor N842, dam of Lot 3 in this offering. This Resource daughter turned in a nursing ratio of 114 on her first calf. This son by the high ADG bull in the 2016 Midland Bull Test, HARB JH High Life 567, is a powerfully constructed individual with a ton a performance to offer.

75

D A R High Life T079

Birth Date: 2-19-2019 Bull 19664354 Tattoo: T079

HARB JH High Life 567
18339456

ANGUS GS
Powered by Regis Genetics

HARB RCA Black Lady E3
19050548

#*VAR Reserve 1111

HARB Wendy 678 JH

*HARB Hindquarter 473 JH

HARB RCA Black Lady 91

#*B/R New Day 454
+*Sandpoint Blackbird 8809
#HARB Windy 702 JH
CAR Wendy 807

+HARB Stur-D 191 JH
#*HARB Princess Vel 980 JH
#HARB Pendleton 765 JH
RCA Black Lady H79

CW
+53 20%
MARB
+38 70%
RE
+27 90%
FAT
+0.028 75%

CED	BW	WW	YW	SC	DOC	MILK
+8 35%	+1.9 65%	+72 10%	+123 10%	+98 35%	+11 75%	+27 35%
\$EN	\$M	\$W	\$B	ACT BW	RATIO	ADJ. WW
-24 85%	+60 40%	+77 10%	+118 70%	70	96	571 100

T079 is the combination of two of our own herd sires, High Life and Hindquarter, both produced by Harrison Angus Ranch

Dix Angus Ranch

76

D A R High Life T080 [OHF]

Birth Date: 3-12-2019

Bull 19606221

Tattoo: T080

#*VAR Reserve 1111
HARB JH High Life 567
18339456
HARB Wendy 678 JH

ANGUS GS

Powered by Angus Genetics

DAR Eldorene R723

18901328

*HARB Hindquarter 473 JH

DAR Eldorene P110

#*B/R New Day 454
+*Sandpoint Blackbird 8809
#HARB Windy 702 JH
CAR Wendy 807

+HARB Stur-D 191 JH
#*HARB Princess Vel 980 JH
SO Paystreak 126-13
#SandPoint Eldorene 3033

CW
+30 80%
MARB
+42 65%
RE
+29 85%
FAT
+061 95%

CED	BW	WW	YW	SC	DOC	MILK
+6 50%	+3.1 90%	+64 20%	+101 45%	+1.02 35%	+21 30%	+26 40%
\$EN	\$M	\$W	\$B	ACT BW RATIO	ADJ. WW RATIO	
-8 40%	+65 30%	+68 20%	+95 95%	80 107	617	110

T080 is a 3/4 brother to Lot 75. He is a moderate framed bull with good rib shape and muscle. His granddam Eldorene 3033 has been an outstanding producer for us with 5 progeny ratio 115 at weaning; she is the dam of Lot 2 in this offering.

78

D A R N944 Hoover Dam T115

Birth Date: 3-18-2019

Bull *19647947

Tattoo: T115

#*Hoover Dam
DAR Hoover Dam N944
17640986
DAR CDPrimroseF310 IE79 K362

ANGUS GS

Powered by Angus Genetics

DAR Jilt O468

18098312

+*DAR Hoover Dam M612

DAR CD Jilt HA40

#*SydGen CC&7
#Erica of Ellston C124
Dar CD GB58 Ie79
WK Primrose 5310

#*Hoover Dam
ACF Rita 0005
#Hunts Calculator 2720
Green Garden Jilt A041 S1

CW
+79 1%
MARB
+99 10%
RE
+68 30%
FAT
+011 50%

CED	BW	WW	YW	SC	DOC	MILK
-1 95%	+4.7 95%	+75 4%	+138 3%	+70 55%	+27 10%	+37 2%
\$EN	\$M	\$W	\$B	ACT BW RATIO	ADJ. WW RATIO	
-47 95%	+44 85%	+74 10%	+217 1%	82 103	716	117

Hoover Dam T115 is the first of the N944 sons that we have offered at auction. This is an exciting bull with his added value in carcass merit and performance. He is one of the top YW bulls in the offering and top 1% for CW and \$Beef value. He should make the kind of feeding cattle to gain the extra premium.

77

D A R High Life T081 [MYP-DDF-OHF]

Birth Date: 2-20-2019

Bull 19606222

Tattoo: T081

#*VAR Reserve 1111
HARB JH High Life 567
18339456
HARB Wendy 678 JH

ANGUS GS

Powered by Angus Genetics

DAR Althea R772

19084728

*Deer Valley Coal Train 41157

DAR Althea O445

#*B/R New Day 454
+*Sandpoint Blackbird 8809
#HARB Windy 702 JH
CAR Wendy 807

*Boyd Signature 1014
Long Erica 208
#*EF Complement 8088
DAR HD Althea HB98

CW
+39 55%
MARB
+30 80%
RE
+45 65%
FAT
+052 95%

CED	BW	WW	YW	SC	DOC	MILK
+8 35%	+9 40%	+56 45%	+99 45%	+1.78 5%	+16 55%	+38 2%
\$EN	\$M	\$W	\$B	ACT BW RATIO	ADJ. WW RATIO	
-26 90%	+47 80%	+72 15%	+110 80%	76 104	565	101

High Life T081 was raised by one of the first Coal Train daughters to come into production. His dam nursed him to a 101 ratio and she maintained her condition very well.

79

D A R N944 Hoover Dam T113

Birth Date: 3-24-2019

Bull 19647946

Tattoo: T113

#*Hoover Dam
DAR Hoover Dam N944
17640986
DAR CDPrimroseF310 IE79 K362

ANGUS GS

Powered by Angus Genetics

DAR Rita M739

17464430

#*Styles Upgrade J59

DAR JD Rita I978

#*SydGen CC&7
#Erica of Ellston C124
Dar CD GB58 Ie79
WK Primrose 5310

#Sitz Upward 307R
Plainview Lassie 71B
#KCF Bennett Total
Green Garden Rita 9078 S1

CW
+62 10%
MARB
+1.06 10%
RE
+83 15%
FAT
+016 60%

CED	BW	WW	YW	SC	DOC	MILK
+3 75%	+2.7 80%	+66 20%	+116 20%	+80 50%	+32 2%	+31 15%
\$EN	\$M	\$W	\$B	ACT BW RATIO	ADJ. WW RATIO	
-25 90%	+52 65%	+72 15%	+203 1%	82 103	725	119

Hoover Dam T113 is an easy bull to find as you stroll through the pen. He is wide based, heavy muscled and has an eye catching design. He will be one of the highest MARB bulls in this offering and has a +203 for \$Beef. His sire D A R Hoover Dam N944 is the highest \$Beef sire among Hoover Dam sons in the entire Angus breed.



D A R N944 Hoover Dam T113 - Lot 79

Dix Angus Ranch

80

D A R N944 Hoover Dam T111

Birth Date: 3-13-2019 Bull 19643532 Tattoo: T111

#*Hoover Dam	#*SydGen CC&7	CW
DAR Hoover Dam N944	#Erica of Ellston C124	+54 20%
17640986	Dar CD GB58 Ie79	MARB
	DAR CD Primrose F310 Ie79 K362	+71 30%
ANGUS GS	WK Primrose 5310	RE
Gardens Prime Star HB3	#*Gardens Prime Star	+60 40%
DAR CD Flame FC47 HB3 K365	Green Garden Anna FF3	FAT
16720922	Gardens SST A169 S1	+010 50%
	Molitor Wn Flamette 608-2047	

CED	BW	WW	YW	SC	DOC	MILK
+7 45%	+1.6 60%	+60 35%	+106 35%	+12 90%	+31 3%	+29 20%
\$EN	\$M	\$W	\$B	ACT BW RATIO	ADJ. WW RATIO	
-17 70%	+56 55%	+67 20%	+163 10%	82	103	642 105

T111 is another Hoover Dam N944 son that has the features to make a great heifer bull. Very smooth shouldered bull with the length that anyone may desire.

81

D A R N944 Hoover Dam T114

Birth Date: 3-20-2019 Bull 19647948 Tattoo: T114

#*Hoover Dam	#*SydGen CC&7	CW
DAR Hoover Dam N944	#Erica of Ellston C124	+37 60%
17640986	Dar CD GB58 Ie79	MARB
	DAR CD Primrose F310 Ie79 K362	+1.11 5%
ANGUS GS	WK Primrose 5310	RE
#*Jindra Double Vision	#Connealy Reflection	+52 55%
DAR Pride O449	+Hoff Rachel 8312 405	FAT
17981772	#*Gardens Prime Star	+054 95%
	#Daigard Pride 3333	

CED	BW	WW	YW	SC	DOC	MILK
+4 70%	+2.1 70%	+46 80%	+83 75%	+1.17 25%	+24 20%	+24 55%
\$EN	\$M	\$W	\$B	ACT BW RATIO	ADJ. WW RATIO	
+12 4%	+59 45%	+50 65%	+149 25%	78	98	594 97

T114 is the highest marbling bull in the offering that was produced by a very sound made Double Vision daughter.

82

D A R Resource T086

Birth Date: 2-13-2019 Bull 19649704 Tattoo: T086

#*SAV Resource 1441	+Rito 707 of Ideal 3407 7075	CW
HARB Resource 116	*SAV Blackcap May 4136	+50 25%
18673277	HARB Lady Camillia 802	MARB
	#HARB Windy 702 JH	+82 20%
ANGUS GS	HARB Lady Camillia 649	RE
+*BJ Program 2201	#HA Program 5652	+68 30%
DAR Maxine Q668	+*BJ Objective 8215	FAT
18564108	*Styles Upgrade J59	-009 25%
	+BJ Objective 8212	

CED	BW	WW	YW	SC	DOC	MILK
+5 60%	+1.7 60%	+69 15%	+121 15%	+1.00 35%	+26 15%	+27 35%
\$EN	\$M	\$W	\$B	ACT BW RATIO	ADJ. WW RATIO	
-25 90%	+59 45%	+74 10%	+155 20%	84	109	622 102

T086 is sired by HARB Resource 116 who was the high efficiency bull at the 2017 Midland Bull Test as he recorded an efficiency ratio of 150 and an RFI of -9.50. T086 offers you the opportunity to add efficiency to your herd as well as marbling as he ranks in the top 20% of the breed

83

D A R Resource T087

Birth Date: 2-4-2019 Bull 19649214 Tattoo: T087

#*SAV Resource 1441	+Rito 707 of Ideal 3407 7075	CW
HARB Resource 116	*SAV Blackcap May 4136	+23 90%
18673277	HARB Lady Camillia 802	MARB
	#HARB Windy 702 JH	+58 45%
ANGUS GS	HARB Lady Camillia 649	RE
*HARB Hindquarter 473 JH	+HARB Stur-D 191 JH	+46 65%
DAR Ever Entense R722	#HARB Princess Vel 980 JH	FAT
18901327	#*SAV Angus Valley 1867	+034 80%
	+*Spruce Mtn Ever Entense 1016	

CED	BW	WW	YW	SC	DOC	MILK
+11 15%	-1.0 10%	+44 85%	+81 80%	+73 55%	+25 15%	+31 15%
\$EN	\$M	\$W	\$B	ACT BW RATIO	ADJ. WW RATIO	
-9 45%	+62 35%	+56 45%	+102 90%	72	99	496 89

Another son of the efficiency king Resource 116. T087 is double-digit CED and -1.0 BW EPD. Heifer bull deluxe.

84

D A R Woodston T104

Birth Date: 2-20-2019 Bull *19606215 Tattoo: T104

#*Plattmire Weigh Up K360	#Sitz Upward 307R	CW
DAR Woodston R104	#Barbara of Plattmire 337	+67 3%
*18900691	*#Hoover Dam	MARB
	ACF Rita 0005	+39 70%
ANGUS GS		RE
#*EF Complement 8088	#Basin Franchise P142	+54 50%
DAR Blackbird Q633	+EF Everelda Entense 6117	FAT
*18587988	#Sitz Upward 307R	+027 75%
	+Circle S Blackbird 7331	

CED	BW	WW	YW	SC	DOC	MILK
+8 35%	+2.3 75%	+71 10%	+124 10%	+1.21 25%	+26 15%	+32 10%
\$EN	\$M	\$W	\$B	ACT BW RATIO	ADJ. WW RATIO	
-21 80%	+67 25%	+81 4%	+153 20%	88	114	662 109

T104 is a bigger scaled bull out of a phenomenal EF Complement daughter. She is off to a tremendous start with her first two calves at 107 for weaning ratio. His sire Woodston R104 was used in our AI program. He was the top bull from our 2018 calf crop who is working at McClaren Angus, Fowler, Kansas.



DAR Rita M703 - Dam of DAR Woodston R104
(sire of Lots 84 and 85.)

85

D A R Woodston T105

Birth Date: 1-27-2019 Bull 19664355 Tattoo: T105

#*Plattmire Weigh Up K360	#Sitz Upward 307R	CW
DAR Woodston R104	#Barbara of Plattmire 337	+34 70%
*18900691	*#Hoover Dam	MARB
	ACF Rita 0005	+50 55%
ANGUS GS		RE
*HARB One Shot 481 JH	#Isu Imaging Q 9111	+17 95%
HARB Merica E85 JH	#HARB Black Lady 688 JH	FAT
19050550	#*Kesslers Frontman R001	+003 40%
	HARB Madeline Erica 189 JH	

CED	BW	WW	YW	SC	DOC	MILK
+14 4%	-2.0 4%	+52 60%	+91 65%	+87 45%	+2 95%	+29 20%
\$EN	\$M	\$W	\$B	ACT BW RATIO	ADJ. WW RATIO	
-11 50%	+38 95%	+65 25%	+110 80%	60	84	464 83

T105 is a sure shot heifer bull by Woodston. His dam is produced by a past Midland graduate HARB One Shot. T105 is a sure shot heifer bull by Woodston. His dam is produced by a past Midland graduate HARB One Shot.

SALE DAY PICK-UP:
\$100 Discount per bull if
bulls are taken home on
sale day from the sale barn.

Dix Angus Ranch



D A R P211 Capitalist T106 - Lot 86

86

D A R P211 Capitalist T106

Birth Date: 2-2-2019 Bull *19606210 Tattoo: T106

DAR Capitalist P211 18220181	#*Connealy Capitalist 028	#*SAV Final Answer 0035 Prides Pita of Conanga 8821 #*Kesslers Frontman R001 DAR HD Althea HB98	CW
	DAR Althea N846		+36 65%
ANGUS <small>Powered by Angus Genetics</small>	#*SAV Resource 1441	+Rito 707 of Ideal 3407 7075 *SAV Blackcap May 4136 8N Upstart 102 +BJ Objective 1076	MARB
	#DAR Ms Upstart N832		+34 75%
DAR Stormy R717 18901325			RE
			+71 25%
			FAT
			+0.01 35%

CED	BW	WW	YW	SC	DOC	MILK
+10 20%	+6 35%	+62 25%	+108 30%	+94 40%	+15 60%	+25 50%
\$EN	\$M	\$W	\$B	ACT BW RATIO	ADJ. WW RATIO	
-16 65%	+63 35%	+68 20%	+104 85%	70	96	593 106

T106 is a calving-ease prospect from one of our favorite cow families. His first calf mother turned in a 106 ratio while his Pathfinder Granddam is on her way to our donor pen as she's recorded 5@106 with an impressive average of 360 for calving interval.



DAR Capitalist P211 - Sire of Lots 86 and 87.

87

D A R P211 Capitalist T107

Birth Date: 2-19-2019 Bull 19644555 Tattoo: T107

DAR Capitalist P211 18220181	#*Connealy Capitalist 028	#*SAV Final Answer 0035	CW
	DAR Althea N846	Prides Pita of Conanga 8821	+47 35%
ANGUS <small>Powered by Angus Genetics</small>	*LD Emblazon 999 #HARB Princess Vel W94 JH	#*Kesslers Frontman R001	MARB
		DAR HD Althea HB98	+38 70%
#*OCC Emblazon 854E		RE	
#*SH Forever Lady 3124 5118		+71 25%	
#*Connealy Onward		FAT	
#HARB Princess Vel 36 JH		+016 60%	

CED	BW	WW	YW	SC	DOC	MILK
+9 30%	+7 40%	+65 20%	+114 20%	+1.20 25%	+18 45%	+27 35%
\$EN	\$M	\$W	\$B	ACT BW RATIO	ADJ. WW RATIO	
-21 80%	+76 10%	+72 15%	+139 35%	78	104	610 104

T107 is another son of the Capitalist P211 who was selected at the 2016 Midland Bull Test and is working in Wyoming for M Diamond Angus and Lisco Angus. This particular son, T107, is out of the great Princess Vel cow family that produced Hindquarter.

88

D A R Resolution T102

Birth Date: 2-11-2019 Bull 19606213 Tattoo: T102

DAR Resolution R106 18900706	#*KG Solution 0018 Molitor FA Blackbird 878-046	#MOGCK Sure Shot KG Rito Lady 8724 #*SAV Final Answer 0035 Molitor Dan Blkbird 426-878	CW	
			+47 35%	
ANGUS <small>Powered by Angus Genetics</small>	#*LD Emblazon 999 DAR Rita N864	#*OCC Emblazon 854E #*SH Forever Lady 3124 5118 #*Hoover Dam DAR JD Rita 1978	MARB	
			+34 75%	
			RE	
			+54 50%	
			FAT	
			-0.04 30%	
DAR Rita Q672 18588045				

CED	BW	WW	YW	SC	DOC	MILK
+9 30%	-3 20%	+63 25%	+117 15%	+14 90%	+30 4%	+27 35%
\$EN	\$M	\$W	\$B	ACT BW RATIO	ADJ. WW RATIO	
-32 95%	+58 50%	+67 20%	+148 25%	72	94	587 96

Resolution T102 a powerhouse of a bull with tons of red meat. He is wide based, deep ribbed, and heavy muscled. With all of that he has to offer phenotypically, he is a heifer bull as well. Sub-zero BW EPD son of the Lot 1 bull D A R Resolution R106 from the 2018 Midland Bull Test.



D A R Resolution T102 - 88

89

D A R Resolution T103

Birth Date: 2-2-2019 Bull *19606214 Tattoo: T103

DAR Resolution R106 18900706	#*KG Solution 0018	#MOGCK Sure Shot	CW
	Molitor FA Blackbird 878-046	KG Rito Lady 8724	+61 10%
ANGUS <small>Powered by Angus Genetics</small>	#*Basin Payweight 1682	#*SAV Final Answer 0035	MARB
		Molitor Dan Blkbird 426-878	+32 75%
DAR Blackcap R702 +*18903272	#*Deer Valley Blackcap 51291	#*Basin Payweight 006S	RE
		21AR O Lass 7017	+50 60%
		#*Plattmeyer Weigh Up K360	FAT
		+*Rita 1194 of 2536 Rito 616	- 0.07 25%

CED	BW	WW	YW	SC	DOC	MILK
+8 35%	+1.1 45%	+73 10%	+125 10%	+99 35%	+23 20%	+32 10%
\$EN	\$M	\$W	\$B	ACT BW RATIO	ADJ. WW RATIO	
-10 50%	+75 10%	+91 1%	+146 25%	68	94	559 100

Another Resolution son that will work well on heifers and give some performance to follow. His dam is a very nice profiling Payweight 1682 daughter with an udder of perfection.



Dix Angus Ranch

90

D A R Midnight T099

Birth Date: 4-10-2019

Bull 19639135

Tattoo: T099

DAR Midnight 6050
+*18574077

#*Connealy Black Granite
+*Hedgewood Rita 301

#*Connealy Consensus 7229
#Eura Elga of Conanga 9109
#*Connealy Capitalist 028
+Hedgewood Rita 521

DAR Rita Q632
+*18660762

#*Connealy Black Granite
+*Hedgewood Rita 137

#*Connealy Consensus 7229
#Eura Elga of Conanga 9109
#Sitz Upward 307R
+Hedgewood Rita 707

	CED	BW	WW	YW	SC	DOC	MILK	
	+13	-1.7	+63	+114	-.32	+30	+21	
	+12	+1.4	+62	+105	+.53	+32	+23	
	\$EN	\$M	\$W	\$B	ACT BW	RATIO	ADJ. WW	RATIO
	-11	+72	+67	+132	70	91	727	119
	-4	+52	+67	+113				

T099 will be a standout in the latter portion of the sale. This second son of Turbo is very eye-appealing from a balance and muscle standpoint and displays a tremendous set of EPDs to follow. This bull could be the buy of the day.



D A R Midnight T099 - Lot 90

91

D A R Midnight T097

Birth Date: 3-14-2019

Bull *19606216

Tattoo: T097

DAR Midnight 6050
+*18574077

#*Connealy Black Granite
+*Hedgewood Rita 301

#*Connealy Consensus 7229
#Eura Elga of Conanga 9109
#*Connealy Capitalist 028
+Hedgewood Rita 521

ANGUSGS
Powered by Angus Genetics

DAR Rita Q621
+*18575593

#*Connealy Black Granite
+*Hedgewood Rita 137

#*Connealy Consensus 7229
#Eura Elga of Conanga 9109
#Sitz Upward 307R
+Hedgewood Rita 707

CED		BW		WW		YW		SC		DOC		MILK	
+20	1%	-3.4	1%	+61	30%	+99	45%	+42	75%	+36	1%	+24	55%
\$EN		\$M		\$W		\$B		ACT BW		RATIO		ADJ. WW	
+11	5%	+90	1%	+79	5%	+118	70%	60	79	560	92		

BIG TIME HEIFER BULL! This Midnight son posts a +20 CED, -3.4 BW and spreads to a +99 YW!



92

D A R Midnight T101

Birth Date: 3-26-2019

Bull 19606218

Tattoo: T101

DAR Midnight 6050
+*18574077

#*Connealy Black Granite
+*Hedgewood Rita 301

#*Connealy Consensus 7229
#Eura Elga of Conanga 9109
#*Connealy Capitalist 028
+Hedgewood Rita 521

ANGUSGS
Powered by Angus Genetics

DAR Rita Q676
18662061

#*Deer Valley All In
+*DAR Rita 0415

#*AAR Ten X 7008 SA
+*Deer Valley Rita 0274
#*Connealy Contrast
*BJ Predestined 8120

2023-2024													
CED		BW		WW		YW		SC		DOC		MILK	
+8	35%	+0	25%	+61	30%	+103	40%	-15	95%	+30	4%	+24	55%
\$EN		\$M		\$W		\$B		ACT BW RATIO		ADJ. WW RATIO			
-11	50%	+72	15%	+68	20%	+117	70%	72	94	593	97		

T101 is another sure shot heifer bull with a +0 BW and 3 generations of stacked calving ease bulls.

93

D A R Contribution T028

Birth Date: 2-9-2019

Bull 19644438

Tattoo: T028

Sitz Investment 648B
17758536

#*Sitz Investment 660Z
Sitz Barabamere Nell 18U

#*Connealy Final Product
#*Sitz Ellunas Elite 656T
#*Rito 112 of 2536 Rito 616
Sitz Barabamere Nell 1280

ANGUSGS
Powered by Angus Genetics

HARB Jerica Y74 JH
17139744

#TC Aberdeen 759
HARB Jerica 972 JH

#CRA Bextor 872 5205 608
#*TC Blackbird 4034
#*SAV Bismarck 5682
+HARB Juanada Erica 294 JH

CED		BW		WW		YW		SC		DOC		MILK	
+6	50%	-1.1	10%	+48	75%	+86	70%	+22	85%	+21	30%	+25	50%
\$EN		\$M		\$W		\$B		ACT BW RATIO		ADJ. WW RATIO			
-1	25%	+67	25%	+55	50%	+119	65%	72	92	558	95		

T028 is a son of Sitz Investment that posts a -1.1 BW EPD. He will work great on a set of heifers. The Investment daughters in production are fantastic.

94

D A R Contribution T037

Birth Date: 3-1-2019

Bull 19644436

Tattoo: T037

Sitz Investment 648B
17758536

#*Sitz Investment 660Z
Sitz Barabamere Nell 18U

#*Connealy Final Product
#*Sitz Ellunas Elite 656T
#*Rito 112 of 2536 Rito 616
Sitz Barabamere Nell 1280

ANGUSGS
Powered by Angus Genetics

HARB Jerica Y90 JH
+17285984

#TC Aberdeen 759
+HARB Juanada Erica 280 JH

#CRA Bextor 872 5205 608
#*TC Blackbird 4034
#Sitz Alliance 6595
Juanada Erica 9024 HARB

CED		BW		WW		YW		SC		DOC		MILK	
+7	45%	-2	20%	+54	55%	+97	50%	+1.91	3%	+18	45%	+32	10%
\$EN		\$M		\$W		\$B		ACT BW RATIO		ADJ. WW RATIO			
-10	50%	+58	50%	+68	20%	+114	75%	78	100	531	91		

Contribution T037 is a 3/4 brother to Lot 93. His granddam produced the \$60,000 HARB Rick O'Shay 838 JH. Sure-Shot Heifer bull.

VOLUME DISCOUNT

The purchase of 5 or more bulls by a single buyer will earn a 5% discount.

Dix Angus Ranch

Sitz Investment 648B - Sire of Lots 93-96.



CED	BW	WW	YW	MILK	\$M	\$W	\$B
+10	-1.0	+57	+108	+32	+63	+71	+128

***Sitz Investment 660Z x #+Rito 112 of 2536 Rito 616**

D A R P205 Emblaze T038

98

Birth Date: 4-10-2019 Bull 19647950 Tattoo: T038

DAR 999 Emblaze P205
18229887

*LD Emblazon 999

DAR Velda N863

#+OCC Emblazon 854E
#SH Forever Lady 3124 5118
#*Connealy Consensus 7229
#DAR JD Velda IF21

ANGUS GS

DAR Rita P164
+18325734

*EXAR Denver 2002B

+Daltons Rita 911

#*EXAR Upshot 0562B
+Exar Royal Lass 1067
#GAR Retail Product
+Daltons RITA42960FHP1200 MF

CW	MARB	RE	FAT
+18 95%	+54 50%	+49 60%	+009 50%

CED	BW	WW	YW	SC	DOC	MILK
+5 60%	+2.0 70%	+53 55%	+89 65%	-37 95%	+13 65%	+22 70%
\$EN	\$M	\$W	\$B	ACT BW RATIO	ADJ. WW RATIO	
+4 15%	+53 65%	+55 50%	+93 95%	84	106	622 102



D A R High Life T052

99

Birth Date: 3-7-2019 Bull 19630072 Tattoo: T052

HARB JH High Life 567
18339456

*+VAR Reserve 1111

HARB Wendy 678 JH

#*B/R New Day 454
+*Sandpoint Blackbird 8809
#HARB Windy 702 JH
CAR Wendy 807

ANGUS GS

HARB Black Lady E58 JH
19038218

HARB Horsepower 561 JH

HARB Black Lady Z84 JH

#*PA Power Tool 9108
#HARB Frances 770 JH
#*S Chisum 6175
+HARB Black Lady 991 JH

CW	MARB	RE	FAT
+36 65%	+35 75%	+47 65%	+039 85%

CED	BW	WW	YW	SC	DOC	MILK
+9 30%	+3.0 85%	+57 40%	+96 55%	+62 60%	+14 65%	+33 10%
\$EN	\$M	\$W	\$B	ACT BW RATIO	ADJ. WW RATIO	
-8 40%	+65 30%	+67 20%	+101 90%	78	106	620 111

Another son of the ADG champion of the 2016 Midland Bull Test, HARB JH High Life 567. His dam by Horsepower is a great young cow that is very feminine in her front end, deep bodied, and has a nice balanced udder.

D A R Q806 PayUpgrade T120

100

Birth Date: 4-6-2019 Bull *19647949 Tattoo: T120

DAR Pay Upgrade Q806
+18562165

*+Basin Payweight 1682

*DAR Ms Upgrade N834

#+Basin Payweight 006S
21AR O Lass 7017
#*Styles Upgrade J59
+BJ Objective 8212

ANGUS GS

DAR Rita Q604
*18588145

*+Basin Payweight 1682

+Hedgewood Rita 137

#+Basin Payweight 006S
21AR O Lass 7017
#Sitz Upward 307R
+Hedgewood Rita 707

CW	MARB	RE	FAT
+55 15%	+82 20%	+21 95%	+091 95%

CED	BW	WW	YW	SC	DOC	MILK
+21 1%	-3.4 1%	+60 35%	+109 30%	+1.04 35%	+21 30%	+39 1%
\$EN	\$M	\$W	\$B	ACT BW RATIO	ADJ. WW RATIO	
-11 50%	+69 20%	+87 2%	+141 35%	72	94	667 109

This Pay Upgrade son certainly has a significant display of EPDs to offer. +21 CED, -3.4 BW, +109 YW, while offering top 20% for Marbling and top 20% \$Maternal! Sure-Fire Heifer Bull.

D A R Contribution T030

95

Birth Date: 3-1-2019 Bull 19630071 Tattoo: T030

Sitz Investment 648B
17758536

*Sitz Investment 660Z

Sitz Barabamere Nell 18U

#*Connealy Final Product
#+Sitz Ellunas Elite 656T
#*Rito 112 of 2536 Rito 616
Sitz Barabamere Nell 1280

ANGUS GS

HARB Jerica B72 JH
18037482

*TC Forthright 9284

HARB Juanada Erica 679 JH

#Connealy Right Answer 746
#TC Marcia 1069
#SAV 8180 Traveler 004
HARB Juanada Erica G73 JH

CW	MARB	RE	FAT
+48 30%	+10 95%	+44 70%	+009 50%

CED	BW	WW	YW	SC	DOC	MILK
+9 30%	+3 30%	+61 30%	+109 30%	+1.35 20%	+13 65%	+33 10%
\$EN	\$M	\$W	\$B	ACT BW RATIO	ADJ. WW RATIO	
-23 85%	+57 50%	+73 15%	+112 75%	74	93	560 92

Another sure fire heifer bull produced by Sitz Investment 648B. Double-digit CED to +109 YW growth.

D A R Contribution T036

96

Birth Date: 3-13-2019 Bull 19644435 Tattoo: T036

Sitz Investment 648B
17758536

*Sitz Investment 660Z

Sitz Barabamere Nell 18U

#*Connealy Final Product
#+Sitz Ellunas Elite 656T
#*Rito 112 of 2536 Rito 616
Sitz Barabamere Nell 1280

ANGUS GS

HARB Princess Vel W89 JH
#17416724

*Connealy Onward

#HARB Princess Vel 36 JH

#Connealy Lead On
Altune of Conanga 6104
#HARB Cincha 829
HARB RCA Princess Vel 03

CW	MARB	RE	FAT
+44 40%	+23 85%	+58 45%	+027 75%

CED	BW	WW	YW	SC	DOC	MILK
+11 15%	-1.4 10%	+50 65%	+93 60%	+86 45%	+13 65%	+34 5%
\$EN	\$M	\$W	\$B	ACT BW RATIO	ADJ. WW RATIO	
-22 85%	+63 35%	+63 30%	+115 75%	74	95	575 98

T036 is a son of a Pathfinder Dam who is a full sister to Hindquarter. He displays sub-zero BW EPD and double-digit CED. Sure-Fire Heifer bull.

D A R Resource T100

97

Birth Date: 2-26-2019 Bull *19606219 Tattoo: T100

HARB Resource 116
18673277

*+SAV Resource 1441

HARB Lady Camillia 802

+Rito 707 of Ideal 3407 7075
*SAV Blackcap May 4136
#HARB Windy 702 JH
HARB Lady Camillia 649

ANGUS GS

DAR Irene Q661
18588056

*LD Emblazon 999

+DAR Irene N802

#+OCC Emblazon 854E
#SH Forever Lady 3124 5118
#*Styles Upgrade J59
#Molitor 2720 Irene 9025-1047

CW	MARB	RE	FAT
+129 80%	+53 50%	+46 65%	+020 65%

CED	BW	WW	YW	SC	DOC	MILK
+9 30%	+2.4 2%	+52 60%	+92 60%	+1.85 45%	+21 30%	+24 55%
\$EN	\$M	\$W	\$B	ACT BW RATIO	ADJ. WW RATIO	
-17 70%	+43 85%	+59 40%	+108 80%	60	79	630 103

Is a direct son of the Efficiency Champion of the 2017 Midland Bull Test HARB Resource 116 as he recorded a 150 feed efficiency ratio and a -9.50 RFI. Sub-zero BW EPD with a 103 WW ratio on this bull.

Dix Angus Ranch

101

D A R Q805 PayUpgrade T119 [DOC]

Birth Date: 3-15-2019 Bull *19647951 Tattoo: T119

#*Basin Payweight 1682	#*Basin Payweight 006S	CW
DAR Pay Upgrade Q805	21AR O Lass 7017	+60 10%
+*18562162	#*Style Upgrade J55	MARB
	#*Obvious 132	+53 50%
ANGUS GS		RE
#Connealy Confidence	#Connealy Danny Boy	+65 35%
DAR Ms Upgrade N834	#Doris of Conanga 669	FAT
+*1799	#*GAR Predestined	+004 40%
	+*GAR Objective N536	

CED	BW	WW	YW	SC	DOC	MILK
+10 20%	+1.0 45%	+64 20%	+112 25%	+1.23 25%	+11 75%	+40 1%
\$EN	\$M	\$W	\$B	ACT BW RATIO	ADJ. WW RATIO	
-23 85%	+55 55%	+85 2%	+145 30%	84	105	623 102

102

D A R N944 Hoover Dam T112

Birth Date: 3-18-2019 Bull 19658783 Tattoo: T112

#*Hoover Dam	#*SydGen CC&7	CW
DAR Hoover Dam N944	#Erica of Ellston C124	+49 30%
17640986	Dar CD GB58 le79	MARB
	WK Primrose 5310	+98 10%
ANGUS GS		RE
#Bon View New Design 878	#B/R New Design 036	+75 25%
DAR Queen Pat L428	Bon View Gammer 85	FAT
#17349741	#Larks Canyon 74D4	+008 45%
	WK Queen Pat 9205	

CED	BW	WW	YW	SC	DOC	MILK
+2 85%	+2.6 80%	+53 55%	+96 55%	+0.06 90%	+12 70%	+30 15%
\$EN	\$M	\$W	\$B	ACT BW RATIO	ADJ. WW RATIO	
-24 85%	+32 95%	+54 50%	+180 3%	86	108	698 114

T112 is sired by the #1 \$Beef Hoover Dam son in the Angus Breed! His MARB EPD is one of the highest in the entire offering. Combined with his 114 WW Ratio there is some real merit in this bull.

103

D A R N944 Hoover Dam T116

Birth Date: 4-7-2019 Bull *19663970 Tattoo: T116

#*Hoover Dam	#*SydGen CC&7	CW
DAR Hoover Dam N944	#Erica of Ellston C124	+45 0.4
17640986	Dar CD GB58 le79	MARB
	WK Primrose 5310	+71 0.3
ANGUS GS		RE
#*Connealy Confidence 0100	Connealy Tobin	+66 0.35
DAR Rita O414	Becka Gala of Conanga 8281	FAT
+*19663289	#*SAV Final Answer 0035	+018 0.6
	+Hedgewood Rita 521	

CED	BW	WW	YW	SC	DOC	MILK
+14 0.04	+1.2 0.2	+55 0.5	+101 0.45	+1.18 0.85	+24 0.2	+30 0.15
\$EN	\$M	\$W	\$B	ACT BW RATIO	ADJ. WW RATIO	
-12 0.55	+50 0.7	+67 0.2	+159 0.15	84	105	588 97

T116 is another son of the highest \$Beef son by Hoover Dam in the breed with a double-digit CED and top 15% \$Beef himself. His dam is a very prolific cow by Connealy Confidence.



D A R 535 Solution T117 - Lot 104

104

D A R 535 Solution T117

Birth Date: 4-5-2019 Bull 19662713 Tattoo: T117

#*KG Solution 0018	#MOGCK Sure Shot	CW
Molitor KG Solution 104-535	KG Rito Lady 8724	+34 70%
18356328	#*Mytty In Focus	MARB
	Molitor IF Lady Rito 4009-104	+40 65%
ANGUS GS		RE
Gardens SST C163 S1	#SS Traveler 6807 T510	+39 75%
DAR JD Lady H900	Green Garden Lady 9162 S1	FAT
15996091	#Molitor Cardinal	+020 65%
	Molitor 473 Lady 758-900	
	#Molitor 381 Lady 350-758	

CED	BW	WW	YW	SC	DOC	MILK
+8 35%	-1.8 4%	+43 85%	+76 85%	+26 85%	+20 35%	+21 80%
\$EN	\$M	\$W	\$B	ACT BW RATIO	ADJ. WW RATIO	
-5 35%	+42 90%	+44 80%	+109 80%	80	101	711 117

SURE-FIRE HEIFER BULL! -1.8 BW EPD and his 12 year-old dam raised him to 711 pounds of weaning to ratio 117.



COMMERCIAL HEIFERS

These heifers are 100% home raised. They have all been OCV'd and had all their pre-breeding vaccinations.

These are the top end of our commercial heifers as we did not retain any commercial replacements for ourselves. These are a great opportunity to bring good maternal genetics into your herd.

"These will sell in 5 Head groups, and the winning bidder will have the option to buy all the heifers of their desire in 5 head increments"

1-5 _____

6-10 _____

11-15 _____

16-20 _____

21-25 _____

26-30 _____

31-35 _____

36-40 _____

41-45 _____

46-50 _____

51-55 _____

56-60 _____

MCCLAREN ANGUS



GROUP 1:

In Wt: 910# Out Wt: 1452#

Average Daily Gain 3.90 lbs.

DMC: 6.08

Quality Grade: 95% Choice, 10% Prime, 36% CAB

Carcass Wt: 928#

Premium per head: \$117.03

GROUP 2:

In Wt: 797# Out Wt: 1434#

Average Daily Gain 3.86 lbs.

DMC: 5.81

Quality Grade: 100% Choice, 8% Prime, 32% CAB

Carcass Wt: 920#

Premium per head: \$132.56



"I'm continually impressed with the people I get to meet in the great industry. The McClarens have a great grasp on farming and cow/calf business. We specialize in the feeding and the packing side of the industry. We have found our partnership to be a perfect fit. Jason and his family use Dix Angus Ranch genetics to improve their genetics which has yielded success in the feedlot as well as the cow/calf business."

Our first opportunity to feed the McClaren stock at Wilroads Feed Yard LLC came in 2019 with two groups of steers and a great set of results. Our nutritionist Greg Catlett PHD said, "This is like having your cake and eating it too. These cattle have superior genetic carcass merit and cutability, plus the excellent performance in the yard."

We understand the impact of quality genetics. It gives us an opportunity to do a great job feeding cattle for our friends and valued customers, the McClarens.

We appreciate the business and friendship.

Thanks

Travis McGuire


Wilroads Feed Yard LLC

11449 Lariat Way • Dodge City KS 67801



Reference Sires

SITZ Logo 12964 [08-09]



\$M	+103
\$W	+70
\$B	+78
CED	+17
BW	-3.0
WW	+63
YW	+98
MILK	+18

#*Sitz Tebow 11860 x Sitz Game Day 9470


Baldridge Compass C041 [08-09] [08-09] [08-09] [08-09] [08-09]



\$M	+57
\$W	+74
\$B	+149
CED	+11
BW	-.5
WW	+61
YW	+114
MILK	+34

*EF Commando 1366 x #*Styles Upgrade J59


D A R Gunslinger R177



\$M	+35
\$W	+64
\$B	+152
CED	+8
BW	-.6
WW	+56
YW	+118
MILK	+32

*L/R Colt 45 3045 x #*Summitcrest Complete 1P55

S A V Raindance 6848 [08-09] [08-09] [08-09] [08-09] [08-09]



\$M	+64
\$W	+66
\$B	+120
CED	+5
BW	+1.6
WW	+66
YW	+125
MILK	+25

#+*Coleman Charlo 0256 x #SAV 8180 Traveler 004

Ellingson Homestead 6030 [08-09] [08-09] [08-09] [08-09] [08-09]



\$M	+60
\$W	+69
\$B	+151
CED	+3
BW	+1.3
WW	+73
YW	+145
MILK	+26

#*CTS Remedy 1T01 x #LT Territory 5824 of EA


S S Niagara Z29 [08-09] [08-09] [08-09] [08-09] [08-09]



\$M	+44
\$W	+71
\$B	+161
CED	+5
BW	+.9
WW	+70
YW	+138
MILK	+30

#*Hoover Dam x #*B/R New Day 454


Basin Payweight 1682 [08-09] [08-09] [08-09] [08-09] [08-09]



\$M	+71
\$W	+96
\$B	+144
CED	+7
BW	+.6
WW	+67
YW	+119
MILK	+32

#+*Basin Payweight 0065 x #HARB Pendleton 765 JH


HARB Hindquarter 473 JH [08-09] [08-09] [08-09] [08-09] [08-09]



\$M	+75
\$W	+86
\$B	+113
CED	+16
BW	+.3
WW	+76
YW	+124
MILK	+28

+HARB Stur-D 191 JH x #*Connealy Onward

BUBS Southern Charm AA31 [08-09] [08-09] [08-09] [08-09] [08-09]



\$M	+60
\$W	+71
\$B	+177
CED	+3
BW	+3.1
WW	+67
YW	+113
MILK	+29

*Silveiras Conversion 8064 x #*Connealy Stimulus 8419

Baldridge 38 Special [08-09] [08-09] [08-09] [08-09] [08-09]



\$M	+56
\$W	+79
\$B	+142
CED	+8
BW	-.1
WW	+76
YW	+128
MILK	+23

*EF Commando 1366 x #*Styles Upgrade J59


S Whitlock 179 [08-09] [08-09] [08-09] [08-09] [08-09]



\$M	+40
\$W	+86
\$B	+126
CED	+6
BW	+1.0
WW	+74
YW	+138
MILK	+30

#*S Chisum 6175 x #R&S Expedition 1404

KM Broken Bow 002 [08-09] [08-09] [08-09] [08-09] [08-09]



\$M	+61
\$W	+77
\$B	+137
CED	+13
BW	-1.6
WW	+62
YW	+103
MILK	+27

#*Summitcrest Complete 1P55 x Basin Ambush 8161

Dix Angus Ranch Donors

D A R Ms Upshot N842 [DOF]



CED	BW	WW	YW	MILK	\$M	\$W	\$B
+9	+1.0	+50	+95	+29	+59	+58	+133

#*EXAR Upshot 0562B x #*SS Objective T510 OT26

Summitcrest Erica 105X [DOF]



CED	BW	WW	YW	MILK	\$M	\$W	\$B
+4	+2.3	+62	+99	+23	+43	+61	+127

#Salt Creek Bob 7003 x B/R New Perspective 079

D A R Maxine P104 [DOF]



CED	BW	WW	YW	MILK	\$M	\$W	\$B
+10	+2	+73	+132	+25	+46	+76	+143

*LD Emblazon 999 x #*Styles Upgrade J59

HARB Black Lady 688 JH



CED	BW	WW	YW	MILK	\$M	\$W	\$B
+12	+2.0	+64	+105	+30	+64	+72	+108

#+TC Grid Topper 355 x #HARB Cincha 829

HARB Princess Vel 980 JH



CED	BW	WW	YW	MILK	\$M	\$W	\$B
+13	+1.5	+77	+132	+36	+69	+89	+158

#*Connealy Onward x #HARB Cincha 829

Hedgewood Rita 301



CED	BW	WW	YW	MILK	\$M	\$W	\$B
+8	-.8	+53	+93	+13	+39	+46	+104

#*Connealy Capitalist 028 x #*N Bar Emulation EXT

Deer Valley Blackcap 51291 [DOF]



CED	BW	WW	YW	MILK	\$M	\$W	\$B
+10	+6	+60	+100	+20	+43	+60	+138

#*Plattmire Weigh Up K360 x #Rito 616 of 4B20 6807

DAR JD Velda IF21 [CAF]



CED	BW	WW	YW	MILK	\$M	\$W	\$B
+6	+6	+58	+102	+34	+38	+69	+132

JDI New Design 208-5902 x #AAR Really Windy 1205

Up and Coming D A R Sires



**L/R Colt 45 3045 x #*Summitcrest Complete 1P55*

D A R Gunslinger R177

Retained in our herd to add the power and rib he exhibits within his outcross pedigree. A very easy fleshing bull as he maintained himself very well in pasture service. His first progeny are offered in this sale as Lots 12-16. He is doing a great job just as we projected he would do for us.

CED	BW	WW	YW	MILK	\$M	\$W	\$B
+8	-.6	+56	+118	+32	+35	+64	+152



*#+*SAV Resource 1441 x *LD Emblazon 999*

D A R Turbo R146

Turbo ranks #1 in the Angus database among Resource that have a +10 CED and +130 YW spread as well as a top 10% \$Beef ranking. He is truly unique as a calving-ease to high performance to carcass quality Resource son. He is powerfully built and smooth traveling. Look for a bright future for Turbo! Sons sell as Lots 9 and 90.

CED	BW	WW	YW	MILK	\$M	\$W	\$B
+9	+1.0	+74	+140	+26	+55	+76	+136



**KG Solution 0018 x #*SAV Final Answer 0035*

D A R Resolution R106

Resolution was the lead-off bull in the 2018 Midland Bull Test and was purchase by Schurrtop Ranch, Nebraska. He rose to the top at the granddaddy of Performance Testing with a 128 ADG ratio as well as his -5.09 RFI to ratio 131 for efficiency. Resolution progeny are on the ground in our program as well as Schurrtop. His first progeny sell as Lots 88 and 89.

CED	BW	WW	YW	MILK	\$M	\$W	\$B
+4	+.9	+74	+126	+26	+71	+83	+135

Custom **FORAGE HARVESTING**



Jeff Dix

STOCKTON, KANSAS

785-476-5030

DIXANGUS.COM

HARB Hindquarter 473 JH

HARB Hindquarter 473 JH



CED	BW	WW	YW	YH	SC	DOC	HP	CEM	MILK	MW	MH	CW	MARB	RE	FAT	\$W	\$B
+16	+0.3	+76	+124	+1	+0.7	+30	+15.2	+10	+28	+73	+0.9	+48	+41	+59	+75	+86	+113

Birth Date: 2-14-2014

Bull 18033745

Tattoo: 473

#+Leachman Right Time
HARB Stur-D 191 JH
 +17138110

#HARB Black Lady 073 JH

Connealy Onward
HARB Princess Vel 980 JH
 #+16548463

#HARB Princess Vel 36 JH

N Bar Emulation EXT
 Leachman Erica 0025
 #HARB Cincha 829
 HARB Black Lady G67 JH

#Connealy Lead On
 Altune of Conanga 6104
 #HARB Cincha 829
 HARB RCA Princess Vel 03

- Hindquarter was our selection from the 2015 Midland Bull Test as the 5th high selling bull.
- His outcross pedigree allows for limitless mating options.
- The daughters in production average a nursing ratio of 103.
- His progeny are standouts posting BR@99, WR@103, & YR@103
- He's thick and stout with great foot design and heal depth. He's back with maternal excellence with a pedigree stacked with Pathfinders!



HARB Princess Vel 980 JH



HARB Stur-D 191 JH

(\$50,000 2012 Midland Bull Test high seller)

Owned with Harrison Angus Ranch, Boyd, MT.



Cody Dix
2595 C Road
Stockton, KS 67669

PRSR
FIRST CLASS
U.S. POSTAGE
PAID
St. Joseph, MO
Permit #2017



Thanks for your interest in our program!