



3RD ANNUAL
PRODUCTION SALE
MARCH 8, 2021

Heartland Regional Stockyards, Plainville, Kansas - 1 PM

Offering:

TOP 100 QUALITY YEARLING BULLS
Genomic Enhanced EPDs by AngusGS™
First Breeding Season Guarantee

10 ELITE REGISTERED OPEN HEIFERS
First time offering registered females
Donor Prospects

**40 RANCH-RAISED COMMERCIAL
REPLACEMENT HEIFERS**

dixangus@gmail.com
785-476-5168

Visit our website for sale preview information:

DIXANGUS.COM

This sale will be broadcast live on the internet.

DVAuction
Broadcasting Real-Time Auctions
Real time bidding & proxy bidding available.

Welcome



Dix Angus Ranch

2595 C Road
Stockton, KS 67669
(785) 476-5168
dixangus@gmail.com
www.dixangus.com

Greetings Friends and Fellow Cattlemen,

We are excited to invite you to our 3rd Annual Production Sale at Heartland Regional Stockyards in Plainville, Kansas on Monday, March 8, 2021.

This year we are offering the best set of bulls that we have ever produced which includes 102 yearlings. In addition, we have added an opportunity for other breeders to take advantage of our first registered to ever be offered through our sale, 10 open heifers, that have been selected from the top end of our heifer crop. These will be donor prospects and females to build of a program around. We will also be offering 40 commercial replacement heifers.

As we have had the opportunity to watch this set of bulls grow throughout the summer and up until sale time, they have shown us the consistency that we have been striving for, as they have more depth of quality as any set we have produced in our history. These guys exhibit all of the things we can hope for as they are bred for soundness, eye-appeal, muscle, rib shape, longevity, docility, performance, and maternal excellence while a majority adds calving ease into the package. This is credited to 20 years of AI as well as 10 years of embryo transfer work in our herd.

We are really just beginning to see the depth of quality come about from our addition of the Harrison Angus Ranch herd in the fall of 2017. We have now had the opportunity to add the top end cows into our embryo transfer program and their sons into this sale offering. The replacement females that have been added to our herd from these superior genetics keep us excited for what is to come in the future. This herd has proven itself over the past 30+ years with many high sellers, individual awards, and even the world champion pen award at the Midland Bull Test. The opportunity to add this great group of females to our herd is one like no other.

To summarize the expectations of the cows that walk the ranch is to say they are to live and produce on what Mother Nature provides. The cows raise these calves on grass and water through the summer, No Creep Feed. Post weaning, the cows graze winter grass as well as corn and milo stalks up until calving, just like a group of commercial cows. We feel like the true production cows rise to the top in this program and pass these traits onto their offspring.

It would be our pleasure to assist you in finding your next herd bull(s) in this offering as well as stand behind them with a 1st breeding season guarantee in the event an injury should occur.

Let us know if you have any questions about our program or the bulls in this offering.

Cody Dix



Haley, Marianne, Jeff, Cody, Brook, Chloe





3RD ANNUAL BULL SALE

Monday, MARCH 8, 2021, 1:00 p.m. (CST)

Selling: 102 Yearling Bulls,
10 Elite Heifers, 40 Ranch-raised Commercial Open
Replacement Heifers. Call Cody: (785) 476-5168



facebook.com/Dix-Angus-Ranch

SALE LOCATION:

Heartland Regional Stockyards
907 NW 3rd STREET
PLAINVILLE, KS 67663

LUNCH: Complimentary lunch at 11 A.M.

AUCTIONEER – Greg Goggins (406) 200-1880

LIVESTOCK PUBLICATION REPRESENTATIVES:

Jeff Mafi- Angus Beef Bulletin (816) 344-4266
Doug Paul – The Stock Exchange (405) 820-3982
Alan Sears – Western Ag Reporter (970) 396-7521

SALE DAY PHONES:

Cody Dix: (785) 476-5168
Jeff Dix: (785) 476-5030 or (785) 476-5210

CATTLE VIEWING:

Cattle can be viewed at anytime at the ranch until Saturday prior to the sale. They will be shipped the Heartland Regional Stockyards in Plainville and will be available for viewed Sunday March 7 and on sale day. Videos of the bulls will be available online at DVAuction.com or dixangus.com

SALE ORDER:

BULLS WILL SELL IN CATALOG ORDER!

Commercial Heifers will sell in Groups of 5 Head, Winning Bidder has option to take as many as desired in increments of 5 Head.

TERMS OF SALE:

Terms are cash. Cattle will sell under the suggested Terms and Conditions of the American Angus Association. All cattle must be paid for in full on sale day. Any announcements from the sale block take precedence over any printed material.

HEALTH:

Interstate health papers will be furnished with every animal selling. A rigid herd health program is followed. All bulls ear-notched and tested negative for PI-BVD and vaccinated against foot rot at time of fertility check.

DELIVERY: Free Delivery on all bulls selling for \$3,000 or more in Kansas and bordering states, outside these parameters will be at cost.

VOLUME DISCOUNT: The purchase of 5 or more bulls by a single buyer will earn a 5% discount.

GENOMICS: All the bulls have been genomically tested with AngusGS as EPDs have been adjusted accordingly. They will all have guaranteed parentage for the sire at minimum.

RETAINED INTEREST:

Dix Angus Ranch is retaining 1/3 revenue sharing interest in a selection of bulls which will be listed in the footnotes as well. Lots we are retaining 1/3 semen revenue: 1, 2, 3, 5, 6, 7, 11, 12, 14, 15, 16, 19, 23, 25.

This sale will be broadcast live on the internet.



ANGUS MEDIA Visit the Angus Journal Web site, www.angus.org and view this sale book online. References: American Angus Association®, AHIR®, AngusSource®, CAB®, Pathfinder®. EPDs contained in the original printed version of this sale book were current as of the printing date. Digital versions of this sale book online at angus.org will have EPDs updated every Friday. Any PDFs downloaded from the website will contain EPDs current as of the date of the download.

American Angus Association® Selection Tools

Expected Progeny Difference (EPD), is the prediction of how future progeny of each animal are expected to perform relative to the progeny of other animals listed in the database. EPDs are expressed in units of measure for the trait, plus or minus. Interim EPDs may appear on young animals when their performance has yet to be incorporated into the American Angus Association National Cattle Evaluation (NCE) procedures. This EPD will be preceded by an "I", and may or may not include the animal's own performance record for a particular trait, depending on its availability, appropriate contemporary grouping, or data edits needed for NCE.

Accuracy (ACC), is the reliability that can be placed on the EPD. An accuracy of close to 1.0 indicates higher reliability. Accuracy is impacted by the number of progeny and ancestral records included in the analysis.

GROWTH
Calving Ease Direct (CED), is expressed as a difference in percentage of unassisted births, with a higher value indicating greater calving ease in first-calf heifers. It predicts the average difference in ease with which a sire's calves will be born when he is bred to first-calf heifers.

Birth Weight EPD (BW), expressed in pounds, is a predictor of a sire's ability to transmit birth weight to his progeny compared to that of other sires.

Weaning Weight EPD (WW), expressed in pounds, is a predictor of a sire's ability to transmit weaning growth to his progeny compared to that of other sires.

Yearling Weight EPD (YW), expressed in pounds, is a predictor of a sire's ability to transmit yearling growth to his progeny compared to that of other sires.

Scrotal Circumference EPD (SC), expressed in centimeters, is a predictor of the difference in transmitting ability for scrotal size compared to that of other sires.

Dolacity (DOC), is expressed as a difference in yearling cattle temperament, with a higher value indicating more favorable docility. It predicts the average difference of progeny from a sire in comparison with another sire's calves.

1 D A R Reno 0104											
Birth Date: 02-29-2020				Bull +*19961787				Tattoo: 0104			
#*KM Broken Bow 002				#*Summitcrest Complete 1P55				CW			
*Spring Cove Reno 4021				#Summitcrest Princess OP12				+57 15%			
17926446				#*CCA Emblazon 702				MARB			
*Spring Cove Liza 021				Spring Cove Liza 721				+70 35%			
ANGUS				#Connealy Lead On				RE			
#*HARB Princess Vel 980 JH				Altune of Conanga 6104				+45 70%			
16548463				#HARB Cincha 829				FAT			
#HARB Princess Vel 36 JH				HARB RCA Princess Vel 03				-021 15%			
CED	BW	WW	YW	SC	DOC	MILK	\$EN				
+9 30%	+1.6 60%	+83 2%	+141 3%	+1.67 10%	+22 30%	+37 2%	-43 95%				
\$M	\$W	\$B	\$C	ACT BW	RATIO	ADJ. WW	RATIO				
+77 10%	+97 1%	+136 40%	+253 25%	78	99	792	130				

MATERNAL
Maternal Milk EPD (Milk), is a predictor of a sire's genetic merit for milk and mothering ability as expressed in his daughters compared to daughters of other sires. In other words, it is that part of a calf's weaning weight attributed to milk and mothering ability.

Cow Energy Value (\$EN), expressed in dollars savings per cow per year, assesses differences in cow energy requirements as an expected dollar savings difference in daughters of sires. A larger value is more favorable when comparing two animals (more dollars saved on feed energy expenses). Components for computing the cow \$EN savings difference include lactation energy requirements and energy costs associated with differences in mature cow size.

\$VALUE INDEXES
\$Value indexes, are multi-trait selection indexes to assist beef producers by adding simplicity to genetic selection decisions. \$Values are reported in dollars per head, where a higher value is more favorable. The \$Value is an estimate of how future progeny of each sire are expected to perform, on average, compared to progeny of other sires in the database if the sires were randomly mated to cows and if calves were exposed to the same environment.

Maternal Weaned Calf Value (\$M), an index, expressed in dollars per head, predicts profitability differences from conception to weaning with the underlying breeding objective assuming that individuals retain their own replacement females within herd and sell the rest of the cull female and all male progeny as feeder calves. The model assumes commercial producers will replace 25% of their breeding females in the first generation and 20% of their breeding females in each subsequent generation. Traits included are as follows: calving ease direct, calving ease maternal, weaning weight, milk, heifer pregnancy, docility, mature cow weight, claw set and foot angle.

Weaned Calf Value (\$W), an index value expressed in dollars per head, is the expected average difference in future progeny performance for pre-weaning merit. \$W includes both revenue and cost adjustments associated with differences in birth weight, weaning direct growth, maternal milk, and mature cow size.

Beef Value (\$B), an index value expressed in dollars per head, is the expected average difference in future progeny performance for postweaning and carcass value compared to progeny of other sires.

CARCASS
The genetic evaluation produces a single set of EPDs for carcass weight, marbling score, Ribeye area and fat thickness. The units of measure are in carcass trait format and analyzed on an age-constant basis.

Carcass Weight EPD (CW), expressed in pounds is a predictor of the differences in hot carcass weight of a sire's progeny compared to progeny of other sires.

Marbling EPD (Marb), expressed as a fraction of the difference in USDA marbling score of a sire's progeny compared to progeny of other sires.

Ribeye Area EPD (RE), expressed in square inches, is a predictor of the difference in ribeye area of a sire's progeny compared to progeny of other sires.

Fat Thickness EPD (Fat), expressed in inches, is a predictor of the differences in external fat thickness at the 12th rib (as measured between the 12th and 13th ribs) of a sire's progeny compared to progeny of other sires.



Driving the science of better breeding

There's little room for error in the cattle business. Producers need the most advanced information to make smart selection decisions, and Angus Genetics Inc. (AGI) provides it through genomic-enhanced expected progeny differences (GE-EPDs). EPDs that traditionally contained all pedigree, performance and progeny information now also include results from available genomic, or DNA, tests. Breeders who use genomic technology give buyers access to AGI-generated GE-EPDs that provide:

Increased predictability and decreased risk for young and unproven animals due to enhanced accuracy of EPDs

Better characterization of genetics for difficult-to-measure performance traits (such as carcass traits, maternal traits and feed efficiency)

The ability to make more rapid progress for traits that are important to you, due to:

- more accurate selection
- easier identification of genetic outliers
- the ability to propagate young animals with confidence earlier in their lives

In fact, GE-EPDs on unproven animals have the same amount of accuracy as if they had recorded 8-33 calves, depending on the trait. That's valuable insight, offered regularly through the breed's weekly national cattle evaluation at www.angus.org.

How do you know if EPDs are genomic-enhanced?

Ask your breeder, refer to the registration paper, or look for the AGI GE-EPD logo, Angus GS™ powered by partner Neogen GeneSeek or the HD50k or i50k by partner Zoetis.



Dix Angus Ranch Bull Guarantee

We guarantee that all breeding cattle sold by Dix Angus Ranch are fertile to the best of our knowledge. If at any time during the first breeding season following the sale a bull is injured so as to make them functionally infertile, we will provide you with a satisfactory replacement (if available), or issue you a credit equal to the bull's purchase price minus the salvage value received for that bull. This guarantee is in addition to the Terms and Conditions of the American Angus Association, which also apply.

This is not a life insurance policy. We will not replace or give credit for a dead or incapacitated animal resulting from negligence. We would suggest that normal care still needs to be exercised toward these animals and that particularly the yearling bulls not be allowed to get too thin.

Dix Angus Ranch

1 D A R Reno 0104

Birth Date: 02-29-2020 Bull +*19961787 Tattoo: 0104

#*KM Broken Bow 002	#*Summitcrest Complete 1P55	CW
*Spring Cove Reno 4021	#Summitcrest Princess OP12	+57 15%
17926446	*CCA Emblazon 702	MARB
ANGUSGS	Spring Cove Liza 721	+71 35%
#*Connealy Onward		RE
#HARB Princess Vel 980 JH	#Connealy Lead On	+45 70%
16548463	Altune of Conanga 6104	FAT
	#HARB Cincha 829	
	HARB RCA Princess Vel 03	-021 15%

CED	BW	WW	YW	SC	DOC	MILK	\$EN
+9 30%	+1.6 60%	+83 2%	+141 3%	+1.68 10%	+22 30%	+37 2%	-43 95%
\$M	\$W	\$B	\$C	ACT BW	RATIO	ADJ. WW	RATIO
+76 10%	+97 1%	+137 40%	+254 25%	78	99	792	130

Reno 0104 will lead off the sale as the top performance bull in the offering. He is the first of four flushmates from the best maternal cow to take stride on the ranch, HARB Princess Vel 980 JH. She has produced 4 bulls that have sold for an average of \$26,000, including the second high selling bull in last years' sale to John Nilhas. Retaining 1/3 Semen Interest.



HARB Princess Vel 980 JH - Dam of Lots 1-4

3 D A R Reno 0102

Birth Date: 02-21-2020 Bull +*19961785 Tattoo: 0102

#*KM Broken Bow 002	#*Summitcrest Complete 1P55	CW
*Spring Cove Reno 4021	#Summitcrest Princess OP12	+39 60%
17926446	*CCA Emblazon 702	MARB
ANGUSGS	Spring Cove Liza 721	+78 25%
#*Connealy Onward		RE
#HARB Princess Vel 980 JH	#Connealy Lead On	+16 95%
16548463	Altune of Conanga 6104	FAT
	#HARB Cincha 829	
	HARB RCA Princess Vel 03	+017 60%

CED	BW	WW	YW	SC	DOC	MILK	\$EN
+10 20%	+1.5 55%	+70 15%	+113 30%	+4.7 75%	+27 10%	+33 10%	-34 95%
\$M	\$W	\$B	\$C	ACT BW	RATIO	ADJ. WW	RATIO
+67 30%	+82 5%	+112 80%	+212 70%	78	98	666	109

D A R Reno 0102 is the more moderate brother of the four, as well as the most calving-ease as well. A deep bodied bull with extra power from behind while being very athletic when put into motion. His dam has produced 4 bulls that have sold for an average of \$26,000, including the second high selling bull in last years' sale to John Nilhas. Retaining 1/3 Semen Interest.



D A R Reno 0102 - Lot 3

2 D A R Reno 0101

Birth Date: 03-02-2020 Bull +*19961784 Tattoo: 0101

#*KM Broken Bow 002	#*Summitcrest Complete 1P55	CW
*Spring Cove Reno 4021	#Summitcrest Princess OP12	+68 4%
17926446	*CCA Emblazon 702	MARB
ANGUSGS	Spring Cove Liza 721	+66 40%
#*Connealy Onward		RE
#HARB Princess Vel 980 JH	#Connealy Lead On	+51 60%
16548463	Altune of Conanga 6104	FAT
	#HARB Cincha 829	
	HARB RCA Princess Vel 03	-005 30%

CED	BW	WW	YW	SC	DOC	MILK	\$EN
+6 55%	+3.6 95%	+88 1%	+145 2%	+1.97 3%	+25 20%	+35 4%	-37 95%
\$M	\$W	\$B	\$C	ACT BW	RATIO	ADJ. WW	RATIO
+97 1%	+96 1%	+146 25%	+286 5%	82	103	726	119

Reno 0101 is the big statured, long spined, and power bull of the Reno x 980 flush. He will likely make the type of high producing females that will have tremendous soundness and longevity. From an EPD standpoint, he excels above the other flushmates across the board. Don't miss a big HERD BULL OPPORTUNITY from a phenomenon of a cow. Retaining 1/3 Semen Interest.



D A R Reno 0101 - Lot 2

4 D A R Reno 0103

Birth Date: 02-26-2020 Bull +*19961786 Tattoo: 0103

#*KM Broken Bow 002	#*Summitcrest Complete 1P55	CW
*Spring Cove Reno 4021	#Summitcrest Princess OP12	+57 15%
17926446	*CCA Emblazon 702	MARB
ANGUSGS	Spring Cove Liza 721	+80 25%
#*Connealy Onward		RE
#HARB Princess Vel 980 JH	#Connealy Lead On	+42 75%
16548463	Altune of Conanga 6104	FAT
	#HARB Cincha 829	
	HARB RCA Princess Vel 03	+006 45%

CED	BW	WW	YW	SC	DOC	MILK	\$EN
+13 10%	+7 40%	+84 2%	+137 5%	+1.64 10%	+29 10%	+35 4%	-38 95%
\$M	\$W	\$B	\$C	ACT BW	RATIO	ADJ. WW	RATIO
+90 1%	+100 1%	+140 35%	+272 10%	80	101	684	112

D A R Reno 0103 is the fourth member of a very exciting flush of maternal excellence and absolute performance. Calving-Ease, Performance, Carcass, and maternal all in one package out of one of the best cows to ever set foot on the ranch.

Dix Angus Ranch



D A R Blueprint 0201 - Lot 5

5

D A R Blueprint 0201

Birth Date: 02-28-2020

Bull 19961788

Tattoo: 0201

*Connealy Confidence Plus

#*Connealy Confidence 0100

CW

I+31 80%

*Woodhill Blueprint
18876777

*Woodhill Evergreen Z291-B233

Elbanna of Conanga 1209

*Tehama Sierra Cut Z118

MARB

I+.62 40%

ANGUSGS

#SAV Mustang 9134

#*SAV Final Answer 0035

RE

I+.53 55%

HARB Merica Z73 JH
18029948

HARB Madeline Erica 189 JH

#SAV Emblynette 7415

#HARB Cincha 829

FAT

I+.015 55%

HARB Madeline Erica 887 JH

CED	BW	WW	YW	SC	DOC	MILK	\$EN
+11 15%	+0 25%	+66 25%	+119 20%	I+1.13 30%	I+18 50%	+28 30%	-29 90%
\$M	\$W	\$B	\$C	ACT BW	RATIO	ADJ. WW	RATIO
+56 60%	+70 20%	+134 45%	+230 45%	76	93	756	118

D A R Blueprint 0201 is very easy to find as you enter the pen. He had the heaviest actual weaning weight bull of the natural calves and never slowed down. He's a very attractive bull from a side profile that is straight in his top line, deep middle, smooth fronted, and powerful when viewed from any angle. 0201 is arguably the widest topped bull of the group as well. His dam entered our donor pen this past spring. She produced a son working in Washington state for Wright Way and McCall Angus as well as one of the top sellers in our inaugural sale by Bar D Ranch. Retaining 1/3 Semen Interest.



Woodhill Blueprint - Sire of Lot 5

6

D A R Southern Charm 0127

Birth Date: 02-24-2020

Bull +*19961799

Tattoo: 0127

*Silveiras Conversion 8064

#*BT Crossover 758N

*BUBS Southern Charm AA31
17853196

+EXG Saras Dream S609 R3

*Hickory Hill Erica 009

#*Connealy Stimulus 8419

Hickory Hill Erica TA32

ANGUSGS

*LD Emblazon 999

#*OCC Emblazon 854E

*DAR Maxine P104
18244844

*DAR Ms Upgrade N834

#*SH Forever Lady 3124 5118

#*Styles Upgrade J59

+BJ Objective 8212

CW

+55 20%

MARB

+98 15%

RE

+95 10%

FAT

+0.014 55%

CED	BW	WW	YW	SC	DOC	MILK	\$EN
+10 20%	+1.3 50%	+81 3%	+137 5%	+53 70%	+20 40%	+33 10%	-26 85%
\$M	\$W	\$B	\$C	ACT BW	RATIO	ADJ. WW	RATIO
+78 10%	+96 1%	+159 15%	+284 5%	76	96	677	111

Southern Charm 0127 is a true Herd Bull Prospect in every way. He's a rugged made bull. As you study him on the hoof he is a stout made bull with great base width and muscle. He carries the frame size advantage of the flush and he is a long sided bull with plenty of capacity. Study the numbers and he checks all the boxes. His dam is one of the stoutest cows in the herd, as well as our Herd Sire, Turbo's, dam. HERD BULL, Retaining 1/3 Semen Interest.



D A R Southern Charm 0127 - Lot 6

Dix Angus Ranch



D A R Southern Charm 0125 - Lot 7

7

D A R Southern Charm 0125

Birth Date: 02-24-2020

Bull +*19961797

Tattoo: 0125

*BUBS Southern Charm AA31
17853196

*Silveiras Conversion 8064
*Hickory Hill Erica 009

#+BT Crossover 758N
+EXG Saras Dream S609 R3
#*Connealy Stimulus 8419
Hickory Hill Erica TA32

ANGUSGS

*LD Emblazon 999

#+OCC Emblazon 854E
#*SH Forever Lady 3124 5118
#*Styles Upgrade J59
+BJ Objective 8212

*DAR Maxine P104
18244844

*DAR Ms Upgrade N834

CED	BW	WW	YW	SC	DOC	MILK	\$EN
+12 10%	+2 30%	+74 10%	+126 15%	+33 80%	+11 80%	+28 30%	-20 70%
\$M	\$W	\$B	\$C	ACT BW	RATIO	ADJ. WW	RATIO
+71 20%	+85 3%	+150 20%	+266 15%	84	105	627	103

A Southern Charm son from the great Maxine P104 cow. He is a member of one of the best flushes we've ever made at the ranch. A Calving Ease bull with top end performance and carcass merit. He is well rounded from a EPD standpoint and is very sound when you start to study him in person. HERD BULL Retaining 1/3 Semen Interest.

9

D A R Southern Charm 0128

Birth Date: 02-28-2020

Bull +*19961800

Tattoo: 0128

*BUBS Southern Charm AA31
17853196

*Silveiras Conversion 8064
*Hickory Hill Erica 009

#+BT Crossover 758N
+EXG Saras Dream S609 R3
#*Connealy Stimulus 8419
Hickory Hill Erica TA32

ANGUSGS

*LD Emblazon 999

#+OCC Emblazon 854E
#*SH Forever Lady 3124 5118
#*Styles Upgrade J59
+BJ Objective 8212

*DAR Maxine P104
18244844

*DAR Ms Upgrade N834

CED		BW		WW		YW		SC		DOC		MILK		\$EN	
+2	85%	+3.1	90%	+76	10%	+126	15%	+0.7	90%	+8	85%	+33	10%	-27	85%
\$M		\$W		\$B		\$C		ACT BW		RATIO		ADJ. WW		RATIO	
+68	25%	+85	3%	+161	15%	+277	10%	84		100		609		100	

This is the cow bull of the 6 sons. He is also the highest RE EPD. Very solid made bull from any angle that will add substance and power to his calves.

8

D A R Southern Charm 0126

Birth Date: 02-24-2020

Bull +*19961798

Tattoo: 0126

*BUBS Southern Charm AA31
17853196

*Silveiras Conversion 8064
*Hickory Hill Erica 009

#+BT Crossover 758N
+EXG Saras Dream S609 R3
#*Connealy Stimulus 8419
Hickory Hill Erica TA32

ANGUSGS

*LD Emblazon 999

#+OCC Emblazon 854E
#*SH Forever Lady 3124 5118
#*Styles Upgrade J59
+BJ Objective 8212

*DAR Maxine P104
18244844

*DAR Ms Upgrade N834

CED	BW	WW	YW	SC	DOC	MILK	\$EN
+11 15%	+2 30%	+76 10%	+138 5%	+97 40%	+16 60%	+24 60%	-28 90%
\$M	\$W	\$B	\$C	ACT BW	RATIO	ADJ. WW	RATIO
+64 35%	+78 10%	+130 50%	+233 45%	84	105	611	100

Another member of this great flush from P104. He's got extra length and muscle with added marbling. He is the biggest spread bull of the group from calving ease to YW growth. Don't miss a great opportunity in this great Charm son. Retaining 1/3 Semen Interest.



D A R Southern Charm 0126 - Lot 8

Dix Angus Ranch

10

D A R Southern Charm 0129

Birth Date: 02-28-2020

Bull +*19961801

Tattoo: 0129

*BUBS Southern Charm AA31
17853196
ANGUSGS
*DAR Maxine P104
18244844

*Silveiras Conversion 8064
*Hickory Hill Erica 009
*LD Emblazon 999
*DAR Ms Upgrade N834

#*BT Crossover 758N
+EXG Saras Dream S609 R3
#*Connealy Stimulus 8419
Hickory Hill Erica TA32
#*OCC Emblazon 854E
#*SH Forever Lady 3124 5118
#*Styles Upgrade J59
+BJ Objective 8212

CW
+37 65%
MARB
+99 10%
RE
+74 25%
FAT
+027 75%

CED	BW	WW	YW	SC	DOC	MILK	\$EN
+10 20%	+1.2 50%	+72 10%	+123 15%	+1.46 15%	+10 80%	+27 35%	-19 70%
\$M	\$W	\$B	\$C	ACT BW	RATIO	ADJ. WW	RATIO
+77 10%	+80 10%	+137 40%	+255 20%	88	111	602	99

Lot 10 is more moderate in his stature but doesn't give up the power/mass anywhere else. High marbling bull of the group that will make some great daughters.



D A R Southern Charm 0129 - Lot 10

11

D A R Coalition 0107

Birth Date: 03-16-2020

Bull 19961803

Tattoo: 0107

*U-2 Coalition 206C
18626847
ANGUSGS
*HARB Princess Vel 988 JH
16548465

HF Syndicate 213Z
U2 Erelite 109Z
#*Connealy Onward
#HARB Princess Vel 36 JH

#*Connealy Consensus 7229
HF Miss Blackcap 27R
Young Dale Xclusive 25X
U-2 Erelite 1X
#Connealy Lead On
Altune of Conanga 6104
#HARB Cincha 829
HARB RCA Princess Vel Q3

CW
I+43 50%
MARB
I+.50 55%
RE
I+.48 65%
FAT
I+.001 35%

CED	BW	WW	YW	SC	DOC	MILK	\$EN
+9 30%	+1.4 55%	+62 35%	+114 30%	I+.98 40%	I+.28 10%	+27 35%	-29 90%
\$M	\$W	\$B	\$C	ACT BW	RATIO	ADJ. WW	RATIO
+58 55%	+62 35%	+141 35%	+241 35%	82	101	720	113

This Coalition son is in a league of his own. Arguably the most athletic bull in the offering in a phenotypic package that leaves no box unchecked. A smooth shouldered, long sided bull, with tons of power from any angle. Rib shape and body capacity is incredible. When you set this bull into motion, his stride is one of perfection. All of this, and being produced from the most consistent cow family on the ranch, Princess Vel. His Pathfinder Dam is a flush sister to 980 (the dam of Hindquarter, and the lead-off Reno sons in this offering). HERD BULL OPPORTUNITY!! Retaining 1/3 Semen Interest.

VOLUME DISCOUNT

The purchase of 5 or more bulls
by a single buyer will earn a
5% discount.



D A R Coalition 0107 - Lot 11

Dix Angus Ranch



D A R Coalition 0106 - Lot 12

12

D A R Coalition 0106

Birth Date: 02-28-2020

Bull +*19960455

Tattoo: 0106

HF Syndicate 213Z	#*Connealy Consensus 7229	CW
*U-2 Coalition 206C	HF Miss Blackcap 27R	+43 50%
18626847	Young Dale Xclusive 25X	MARB
U2 Erelite 109Z	U-2 Erelite 1X	+54 50%
ANGUSGS		RE
#*Plattemere Weigh Up K360	#Sitz Upward 307R	+49 65%
*Deer Valley Blackcap 51291	#Barbara of Plattemere 337	FAT
18208025	#Rito 616 of 4B20 6807	-040 3%
	GAR Precision 2536	

CED	BW	WW	YW	SC	DOC	MILK	\$EN
+5 60%	+1.8 65%	+60 40%	+107 40%	+15 90%	+28 10%	+18 95%	-12 45%
\$M	\$W	\$B	\$C	ACT BW	RATIO	ADJ. WW	RATIO
+49 80%	+53 60%	+141 35%	+232 45%	76	100	691	100

This super stout U-2 Coalition son is an easy one to find as you walk the pens. He certainly has added volume and has as much base width as any other bull in the group. Even with his extra power and muscle he strides out smoothly. Retaining 1/3 Semen interest.

13

D A R Coalition 0112

Birth Date: 02-23-2020

Bull +*19960458

Tattoo: 0112

HF Syndicate 213Z	#*Connealy Consensus 7229	CW
*U-2 Coalition 206C	HF Miss Blackcap 27R	+40 60%
18626847	Young Dale Xclusive 25X	MARB
U2 Erelite 109Z	U-2 Erelite 1X	+28 80%
ANGUSGS		RE
#*Plattemere Weigh Up K360	#Sitz Upward 307R	+59 45%
*Deer Valley Blackcap 51291	#Barbara of Plattemere 337	FAT
18208025	#Rito 616 of 4B20 6807	-028 10%
	GAR Precision 2536	

CED	BW	WW	YW	SC	DOC	MILK	\$EN
+11 15%	-.4 20%	+63 30%	+111 35%	+71 55%	+30 4%	+29 25%	-14 55%
\$M	\$W	\$B	\$C	ACT BW	RATIO	ADJ. WW	RATIO
+64 35%	+75 15%	+116 75%	+214 65%	86	100	619	100

A full brother to Lot 12. A sub-zero BW bull with double digit CED in an outcross pedigree. The Coalition daughters are making superb females in the industry. Be one of the first to add these genetics into your program.



D A R Bull City R111 - Maternal brother to Lots 12 & 13.



D A R Coalition 0112 - Lot 13

Dix Angus Ranch



D A R Spur 0132 - Lot 14

14

D A R Spur 0132

Birth Date: 03-17-2020

Bull 19949532

Tattoo: 0132

#*Connealy Spur
17304082

#*Connealy Stimulus 8419
#Jazza of Conanga 8594

ANGUSGS

8N Upstart 102

#DAR Ms Upstart N832

17588559 +BJ Objective 1076

#+HA Power Alliance 1025
Black Creea of Conanga 5332
#+TC Grid Topper 355
Jemma of Conanga 5614

#Sitz Upward 307R
CCA Blackcap 803
#*SS Objective T510 OT26
+BJ Predestined 7041

CW
+42 50%
MARB
+98 15%
RE
+74 25%
FAT
-.001 35%

CED	BW	WW	YW	SC	DOC	MILK	\$EN
+7 45%	+1.9 65%	+78 4%	+128 10%	+1.03 35%	+30 4%	+28 30%	-22 75%
\$M	\$W	\$B	\$C	ACT BW	RATIO	ADJ. WW	RATIO
+84 3%	+87 2%	+145 30%	+272 10%	88	109	733	117

Another outstanding phenotype son of Spur produced naturally by our newest addition to our donor pen, Ms Upstart N832. He is a calving-ease, moderate BW bull with tons of muscle and eye appeal. His dam has turned in an impressive record at weaning in her career with 6@108 in a calving interval of 364 days. She's without a doubt a herd bull producer with sons spread across the county: at Justin Risenmay, Oregon; Sackmann Cattle Company, Washington; and Tyler Muir, Kansas. Retaining 1/3 Semen Interest.



DAR Ms Upstart N832 - Dam of Lot 14

15

D A R Spur 0133 [OHF]

Birth Date: 03-19-2020

Bull 19949529

Tattoo: 0133

#*Connealy Spur
17304082

#*Connealy Stimulus 8419
#Jazza of Conanga 8594

ANGUSGS

SO Paystreak 126-13

DAR Eldorene P110

18244849 #SandPoint Eldorene 3033

#+HA Power Alliance 1025
Black Creea of Conanga 5332
#+TC Grid Topper 355
Jemma of Conanga 5614

#*SAV Angus Valley 1867
Plus-T Aldbar 507-10
#*AAR Ten X 7008 SA
SandPoint Eldorene 1034

CW
+63 10%
MARB
+75 30%
RE
+71 30%
FAT
+0.12 55%

CED	BW	WW	YW	SC	DOC	MILK	\$EN
-2 95%	+5.4 95%	+83 2%	+143 3%	+86 45%	+25 20%	+15 95%	-36 95%
\$M	\$W	\$B	\$C	ACT BW	RATIO	ADJ. WW	RATIO
+44 90%	+57 50%	+155 20%	+245 30%	92	114	757	121

This first son to be offered from Spur is certainly a big-time performance bull. He will add pounds to the scale at weaning time. He should make some high producing daughters to go along with his other attributes as his dam has turned in a weaning record of 3@115. Retaining 1/3 Semen Interest.



D A R Spur 0133 - Lot 15

Dix Angus Ranch



16

D A R 4604 Summit 0209

Birth Date: 01-28-2020

Bull *19960490

Tattoo: 0209

S Summit 4604
17849710

ANGUSGS

*DAR Ever Entense S887
19412158

#*S Summit 956

S Lass 8245

*Connealy Front & Center

*DAR Ever Entense Q601

#*GDAR Game Day 449

#S Pride Anna 709

#*S Chisum 6175

S Lass 627

#*Kesslers Frontman R001

Jais of Conanga 9585

*HARB Hindquarter 473 JH

*Spruce Mtn Ever Entense 1016

CED		BW		WW		YW		SC		DOC		MILK		SEN	
+14	4%	-6	15%	+63	30%	+112	30%	+75	55%	+28	10%	+37	2%	-25	85%
\$M		\$W		\$B		\$C		ACT BW		RATIO		ADJ. WW		RATIO	
+69	25%	+81	5%	+97	95%	+195	85%	70		103		687		119	

Summit 0209 is truly a special individual as he tipped the weaning scale at nearly 700 pounds coming off his first calving dam. He will be an easy find to all good cattlemen on sale day with his superb design instilled with length/depth of body, added muscle and his athletic stride; all in a calving ease package. Retaining 1/3 Semen Interest.

17

D A R Bankroll 0155

Birth Date: 03-08-2020

Bull Reg.No.Pdg.

Tattoo: 0155

*Barstow Bankroll B73
18036327

ANGUSGS

#DAR JD Velda IF21
16507828

#*Barstow Cash

Barstow Miss Dianna Z25

JDI New Design 208-5902

Bairds Velda Q22

#*Sitz Dash 10277

Barstow Queen W16

#CAR Efficient 534

#Barstow Miss Dianna X128

#Bon View New Design 208

Molitor 411 Lady 773-902

#AAR Really Windy 1205

Wards Velda 164

CED	BW	WW	YW	SC	DOC	MILK	\$EN
+14	-2.2	+56	+116	+1.04	+26	+18	-23
+7	+7	+61	+107	+1.01	+11	+34	-28
\$M	\$W	\$B	\$C	ACT BW	RATIO	ADJ. WW	RATIO
+50	+48	+147	+241	78	98	609	100
+52	+73	+122	+210				

Bankroll 0155 is the first of two flush brothers by Velda IF21. A big EPD spread calving-ease bull that has superior eye appeal. IF21 is not only a Pathfinder cow but the highest producing female we've raised in our history as she turned in an impressive 8@116 weaning ratio with a calving interval of 370 days before entering the donor pen. She has produced two daughters that we have introduced into the Embryo Transfer sector of our programs as well.

D A R 4604 Summit 0209 - Lot 16

18

D A R Bankroll 0148

Birth Date: 03-08-2020

Bull Reg.No.Pdg.

Tattoo: 0148

*Barstow Bankroll B73
18036327

ANGUSGS

#DAR JD Velda IF21
16507828

#*Barstow Cash

Barstow Miss Dianna Z25

JDI New Design 208-5902

Bairds Velda Q22

#*Sitz Dash 10277

Barstow Queen W16

#CAR Efficient 534

#Barstow Miss Dianna X128

#Bon View New Design 208

Molitor 411 Lady 773-902

#AAR Really Windy 1205

Wards Velda 164

CED	BW	WW	YW	SC	DOC	MILK	\$EN
+14	-2.2	+56	+116	+1.04	+26	+18	-23
+7	+7	+61	+107	+1.01	+11	+34	-28
\$M	\$W	\$B	\$C	ACT BW	RATIO	ADJ. WW	RATIO
+50	+48	+147	+241	76	100	707	100
+52	+73	+122	+210				

0148 is almost identical to his flush brother in his physical makeup. Another superior calving-ease prospect that will likely yield very highly productive cows to enter into your herd. IF21 is not only a Pathfinder Cow but the highest producing female we've raised in our history as she turned in an impressive 8@116 weaning ratio with a calving interval of 370 days before entering the donor pen. She has produced two daughters that we have introduced into the Embryo Transfer sector of our programs as well.



D A R Bankroll 0155 - Lot 17

Dix Angus Ranch

19

D A R Resolution 0143

Birth Date: 02-29-2020

Bull +*19968417

Tattoo: 0143

DAR Resolution R106
18900706
Molitor FA Blackbird 878-046

#HARB Black Lady 688 JH
15486104
#HARB Black Lady 073 JH

#MOGCK Sure Shot
KG Rito Lady 8724
#*SAV Final Answer 0035
Molitor Dan Blkbird 426-878
#*TC Grid Topper 355
#*GAR Grid Maker
#TC Pride 8067
#HARB Cincha 829
HARB Black Lady G67 JH

CW
+61 10%
MARB
+31 80%
RE
+65 40%
FAT
+003 40%

CED	BW	WW	YW	SC	DOC	MILK	\$EN
+8 35%	+2.5 80%	+78 4%	+138 5%	+1.65 10%	+25 20%	+27 35%	-24 80%
\$M	\$W	\$B	\$C	ACT BW	RATIO	ADJ. WW	RATIO
+73 15%	+81 5%	+130 50%	+242 35%	86	109	715	117

Resolution 0143 is the first of two flush brothers by the incredible Black Lady 688 cow. His dam is a maternal sister to the \$25,000 high selling bull at the 2003 Midland Bull Test and GENEX Pathfinder Sire, HARB Windy 702 JH, and the \$50,000 high selling bull at 2012 MBT, HARB Stur-D 191 JH. His sire is DAR Resolution R106, who earned Lot 1 honors at the 2018 Midland Bull Test. Performance and efficiency bred deep into this pedigree. Retaining 1/3 Semen Interest.



D A R Resolution 0143 - Lot 19

20

D A R Resolution 0142

Birth Date: 02-29-2020

Bull +*19968415

Tattoo: 0142

DAR Resolution R106
18900706
Molitor FA Blackbird 878-046

#HARB Black Lady 688 JH
15486104
#HARB Black Lady 073 JH

#MOGCK Sure Shot
KG Rito Lady 8724
#*SAV Final Answer 0035
Molitor Dan Blkbird 426-878
#*TC Grid Topper 355
#*GAR Grid Maker
#TC Pride 8067
#HARB Cincha 829
HARB Black Lady G67 JH

CW
+48 35%
MARB
+28 80%
RE
+79 20%
FAT
-014 20%

CED	BW	WW	YW	SC	DOC	MILK	\$EN
+8 35%	+1.8 65%	+66 25%	+120 20%	+94 40%	+23 25%	+28 30%	-7 35%
\$M	\$W	\$B	\$C	ACT BW	RATIO	ADJ. WW	RATIO
+72 20%	+74 15%	+124 60%	+233 45%	84	105	607	99

D A R Resolution 0142 is another eye-appealing performance bull from a proven cow family as mentioned above being a full brother to Lot 19.



HARB Black Lady 688 JH - Dam of Lot 19 and 20

22

D A R Hindquarter 0167

Birth Date: 01-25-2020

Bull *19964286

Tattoo: 0167

+HARB Stur-D 191 JH
***HARB Hindquarter 473 JH**
18033745
#*HARB Princess Vel 980 JH

***DAR Erica S836**
19347827
Summitcrest Erica 105X

#*Leachman Right Time
#HARB Black Lady 073 JH
#*Connealy Onward
#HARB Princess Vel 36 JH

#*Basin Payweight 1682
#*Basin Payweight 006S
21AR O Lass 7017
#Salt Creek Bob 7003
#Summitcrest Erica 359P

CW
+43 50%
MARB
+54 50%
RE
+48 65%
FAT
+057 95%

CED	BW	WW	YW	SC	DOC	MILK	\$EN
+13 10%	+1 25%	+66 25%	+114 30%	+62 65%	+19 45%	+31 15%	-26 85%
\$M	\$W	\$B	\$C	ACT BW	RATIO	ADJ. WW	RATIO
+55 65%	+77 10%	+118 70%	+208 70%	68	100	698	121

A big spread Hindquarter son that weaned off at 700 pounds from his first calf Payweight dam. His maternal sister by Hoover Dam sold for \$26,000 at the 2016 Genomic Gems sale in Texas. Heifer bull deluxe.



D A R Hindquarter 0172 - Lot 21

21

D A R Hindquarter 0172

Birth Date: 02-16-2020

Bull 19942601

Tattoo: 0172

+HARB Stur-D 191 JH
***HARB Hindquarter 473 JH**
18033745
#*HARB Princess Vel 980 JH

DAR Bemindful R712
18903283
DAR Bemindful 0452

#*Leachman Right Time
#HARB Black Lady 073 JH
#*Connealy Onward
#HARB Princess Vel 36 JH
#*Basin Payweight 1682
#*Basin Payweight 006S
21AR O Lass 7017
#*EF Complement 8088
#DAR JD Bemind G26 FD71 J167

CW
+58 15%
MARB
+36 75%
RE
+60 45%
FAT
+016 60%

CED	BW	WW	YW	SC	DOC	MILK	\$EN
+11 15%	+8 40%	+72 10%	+122 20%	-14 95%	+23 25%	+23 65%	-27 85%
\$M	\$W	\$B	\$C	ACT BW	RATIO	ADJ. WW	RATIO
+60 50%	+73 15%	+135 40%	+235 40%	84	107	698	111

Here is a very cool made Hindquarter son that tipped the scale at 700 pounds at weaning time. His impressive dam by Basin Payweight 1682 has started off her career with a bang turning in an average WW ratio of 109 on 2 calves and she's on pace to become a Pathfinder Cow in her first year of eligibility. Superior Calving-Ease. Female Maker Bull.

Dix Angus Ranch

23

D A R Broken Bow 0156

Birth Date: 02-03-2020

Bull *19961820

Tattoo: 0156

#*Summitcrest Complete 1P55
#*KM Broken Bow 002
16764044

#Summitcrest Princess OP12

ANGUSGS

#*SAV Resource 1441

+Rito 707 of Ideal 3407 7075

*DAR Hal S849

18347814

+*DAR Ms Upshot N842

*SAV Blackcap May 4136

#*EXAR Upshot 0562B

+*44 Ms New Design 8051

CW
+58 15%
MARB
+70 35%
RE
+66 35%
FAT
+018 60%

CED	BW	WW	YW	SC	DOC	MILK	\$EN
+9 30%	+9 45%	+74 10%	+130 10%	+87 45%	+10 80%	+38 2%	-26 85%
\$M	\$W	\$B	\$C	ACT BW	RATIO	ADJ. WW	RATIO
+65 35%	+93 1%	+147 25%	+256 20%	72	105	550	95

Here is a very eye appealing son of the popular ABS Pathfinder Sire, KM Broken Bow 002. His powerful dam by S A V Resource 1441 is from one of our favorite cows, Upshot N842. 0156 should produce cattle that feed out well in the feed yard or make phenomenal females with great longevity. Retaining 1/3 Semen Interest.



D A R Bankroll 0152 - Lot 25

25

D A R Bankroll 0152

Birth Date: 02-26-2020

Bull 19960418

Tattoo: 0152

#*Barstow Cash
*Barstow Bankroll B73
18036327

Barstow Miss Dianna Z25

ANGUSGS

#DAR Pride Q693

18728723

*HARB Hindquarter 473 JH

DAR Pride Q449

#*Sitz Dash 10277

Barstow Queen W16

#CAR Efficient 534

#Barstow Miss Dianna X128

+HARB Stur-D 191 JH

#*HARB Princess Vel 980 JH

#*Jindra Double Vision

DAR CD Pride E242 D331 J192

CW
+74 2%
MARB
+53 55%
RE
+59 45%
FAT
+015 55%

CED	BW	WW	YW	SC	DOC	MILK	\$EN
+15 2%	+4 30%	+84 2%	+157 1%	+85 45%	+27 10%	+17 95%	-46 95%
\$M	\$W	\$B	\$C	ACT BW	RATIO	ADJ. WW	RATIO
+59 50%	+71 20%	+163 10%	+270 15%	74	93	669	107

Bankroll 0152 is a wide based calving ease bull that exhibits a great amount of length and is exceptional in his stride. Added performance comes with this bull and great maternal. His Pathfinder Dam by Hindquarter earned her honors in her first year of eligibility as she averages 108 WW ratio on 3 calves. 0152's maternal brother was a crowd favorite in the 2020 sale and is now working at Zimmerman Farms, Schoenchen, Kansas. Retaining 1/3 Semen Interest.

24

D A R Roughrider 0116

Birth Date: 03-25-2020

Bull 19960379

Tattoo: 0116

#*Connealy Earnan 076E
*Ellingson Roughrider 4202
17933463

*EA Blackclass 8914

ANGUSGS

#*Connealy Consensus 7229

DAR Velda N863

17793312

#DAR JD Velda IF21

#*Connealy Consensus
+*Brazila of Conanga 3991 839A
LT Curve Bender 4810 of EA
+SAV Blackclass 374

#*Connealy Consensus
Blue Lilly of Conanga 16
JDI New Design 208-5902
Bairds Velda Q22

CW
+45 45%
MARB
+69 35%
RE
+36 80%
FAT
+036 85%

CED	BW	WW	YW	SC	DOC	MILK	\$EN
+4 70%	+9 45%	+68 20%	+120 20%	+88 45%	+21 35%	+29 25%	-16 60%
\$M	\$W	\$B	\$C	ACT BW	RATIO	ADJ. WW	RATIO
+75 15%	+78 10%	+126 55%	+238 40%	90	111	705	112

Roughrider 0116 is produced from an outstanding daughter of Consensus 7229 out of the Velda cow family. She weaned this stud off over 700# to improve her weaning ratio to 5@107 as she will be making her way into our donor pen this spring. Don't miss out on this cow maker of a bull.



D A R Roughrider 0116 - Lot 24

SALE DAY PICK-UP

**\$100 DISCOUNT PER BULL
IF BULLS ARE TAKEN HOME
ON SALE DAY FROM THE
SALE BARN.**

26

D A R Niagara 0197

Birth Date: 02-16-2020

Bull *19960453

Tattoo: 0197

#*Hoover Dam
*SS Niagara Z29
17287387

Jet SS X144

ANGUSGS

+*DAR Blackcap R702

18903272

#*Basin Payweight 1682

+*Deer Valley Blackcap 51291

#*SydGen CC&7

#Erica of Ellston C124

#*B/R New Day 454

JET SS T151

#*Basin Payweight 006S

21AR O Lass 7017

#*Plattermere Weigh Up K360

+*Rita 1194 of 2536 Rito 616

CW
+63 10%
MARB
+80 25%
RE
+82 15%
FAT
-025 10%

CED	BW	WW	YW	SC	DOC	MILK	\$EN
+14 4%	-8 15%	+82 2%	+150 2%	+121 25%	+31 3%	+29 25%	-42 95%
\$M	\$W	\$B	\$C	ACT BW	RATIO	ADJ. WW	RATIO
+50 75%	+90 2%	+168 10%	+268 15%	70	90	610	97

D A R Niagara 0197 is the deepest sided bull in the pen, just loaded with capacity. He is a big spread bull from CE, BW to weaning and yearling performance. A flush brother to his dam, D A R Bull City R111, proved his performance potential with a fifth-place finish in ADG at the 2018 Midland Bull Test.

Dix Angus Ranch

27

D A R Niagara 0199

Birth Date: 02-29-2020

Bull 19961778

Tattoo: 0199

*SS Niagara Z29
17287387

ANGUSGS

#HARB Black Lady D80 JH

18638310

#Hoover Dam

Jet SS X144

*HARB Hindquarter 473 JH

#HARB Black Lady Z70 JH

#SydGen CC&7

#Erica of Ellston C124

#B/R New Day 454

JET SS T151

+HARB Stur-D 191 JH

#HARB Princess Vel 980 JH

#Connealy Right Answer 746

#HARB Black Lady W88 JH

CW

I+55 20%

MARB

I+57 50%

RE

I+76 25%

FAT

I+.026 70%

CED	BW	WW	YW	SC	DOC	MILK	\$EN
+10 20%	+2 30%	+69 15%	+126 15%	I+.42 75%	I+.27 10%	+30 20%	-29 90%
\$M	\$W	\$B	\$C	ACT BW	RATIO	ADJ. WW	RATIO
+65 35%	+74 15%	+150 20%	+260 20%	78	96	666	104

Niagara 0199 is another calving-ease bull with top-notch performance potential. He should make very nice daughters to keep back in your herd as he was produced by one of our best daughters by Hindquarter. His maternal brother is working at Voss Farms, Almena, Kansas.



S Summit 4604 - Sire of Lot 29

29

D A R 4604 Summit 0208

Birth Date: 01-25-2020

Bull *19960491

Tattoo: 0208

S Summit 4604
17849710

ANGUSGS

*DAR Rita S832

19347825

#S Summit 956

S Lass 8245

*Sitz Dividend 649C

*Riverbend Rita X677

#GDAR Game Day 449

#S Pride Anna 709

#S Chisum 6175

S Lass 627

#Barstow Cash

Sitz Barbaramere Nell 39a

*Summitcrest Complete 1P55

*Riverbend Rita 3047

CW

+41 55%

MARB

-.07 95%

RE

+55 55%

FAT

+.051 95%

CED	BW	WW	YW	SC	DOC	MILK	\$EN
+9 30%	-.4 20%	+56 55%	+95 65%	+99 40%	+25 20%	+32 10%	-6 30%
\$M	\$W	\$B	\$C	ACT BW	RATIO	ADJ. WW	RATIO
+75 15%	+72 15%	+89 95%	+190 85%	66	97	589	102

Another cool designed calving ease bull sired by Summit 4604. His first calf dam by Dividend turned in a wean ratio of 102. She is a direct daughter of one the best phenotypes to ever walk our ranch, Rita X677.

28

D A R Hindquarter 0169

Birth Date: 01-31-2020

Bull *19942599

Tattoo: 0169

*HARB Hindquarter 473 JH
18033745

ANGUSGS

*DAR Irene S853

19347818

+HARB Stur-D 191 JH

#HARB Princess Vel 980 JH

*HA Cowboy Up 5405

*DAR Irene P158

#Leachman Right Time

#HARB Black Lady 073 JH

#Connealy Onward

#HARB Princess Vel 36 JH

*HA Outside 3008

#HA Blackcap Lady 1602

#Basin Payweight 1682

*DAR Irene N805

CW

+40 60%

MARB

+57 50%

RE

+41 75%

FAT

+032 80%

CED	BW	WW	YW	SC	DOC	MILK	\$EN
+8 35%	+1.6 60%	+66 25%	+108 40%	+1.57 10%	+28 10%	+24 60%	-19 70%
\$M	\$W	\$B	\$C	ACT BW	RATIO	ADJ. WW	RATIO
+67 30%	+69 20%	+116 75%	+217 60%	76	111	617	107

Hindquarter 0169 is a stout made bull from a Cowboy Up daughter that comes from the foundation cow family on the ranch, stemming back to Molitor 2720 Irene 9025-1047 who turned in 8 calves to ratio 114 for weaning before she entered the donor pen several years ago. There are many daughters that stem back to her in our herd today.

30

D A R Coalition 0113

Birth Date: 02-25-2020

Bull *19960459

Tattoo: 0113

*U-2 Coalition 206C
18626847

ANGUSGS

*Deer Valley Blackcap 51291

18208025

HF Syndicate 213Z

U2 Erelite 109Z

#Plattmeyer Weigh Up K360

*Rita 1194 of 2536 Rito 616

#Connealy Consensus 7229

HF Miss Blackcap 27R

Young Dale Xclusive 25X

U-2 Erelite 1X

#Sitz Upward 307R

#Barbara of Plattmeyer 337

#Rito 616 of 4B20 6807

GAR Precision 2536

CW

+30 85%

MARB

+.46 60%

RE

+27 90%

FAT

-.010 25%

CED	BW	WW	YW	SC	DOC	MILK	\$EN
+9 30%	+6 35%	+50 70%	+97 60%	-.35 95%	+28 10%	+22 75%	-15 55%
\$M	\$W	\$B	\$C	ACT BW	RATIO	ADJ. WW	RATIO
+39 95%	+46 80%	+111 80%	+183 90%	82	103	544	89

A Coalition son with a lot of stretch to him to add extra pounds to his calf crop. His flush brothers sell as Lots 12,13, 49, and 50. His maternal brother was one of the top selling bulls in our Inaugural sale to McClaren Angus, Fowler, Kansas.

31

D A R Homestead 0198

Birth Date: 02-21-2020

Bull 19971062

Tattoo: 0198

*Ellingson Homestead 6030
18543019

ANGUSGS

HARB RCA Black Lady E3

19050548

#CTS Remedy 1T01

EA Erica 1082

*HARB Hindquarter 473 JH

HARB RCA Black Lady 91

#Connealy Thunder

CTS 7V03 Belleme Maid 9T02

#LT Territory 5824 of EA

SAV Alliance 2606

+HARB Stur-D 191 JH

#HARB Princess Vel 980 JH

#HARB Pendleton 765 JH

RCA Black Lady H79

CW

+43 50%

MARB

-.07 95%

RE

+56 50%

FAT

-.016 20%

CED	BW	WW	YW	SC	DOC	MILK	\$EN
+6 55%	+2.2 75%	+73 10%	+135 10%	+1.20 25%	+19 45%	+24 60%	-34 95%
\$M	\$W	\$B	\$C	ACT BW	RATIO	ADJ. WW	RATIO
+61 45%	+68 25%	+96 95%	+186 90%	92	117	658	105

This Ellingson Homestead son should add some frame size, length of body, and extra performance to a calf crop. His daughters should be the keeping kind with a lot of eye appeal and fleshing ability. His Hindquarter dam is off to a great start with a weaning record of 2@103.



Ellingson Homestead 6030 - Sire of Lot 31

Dix Angus Ranch

32

D A R Coal Train 0183 [OHP]

Birth Date: 02-24-2020 Bull 19940466 Tattoo: 0183

*Deer Valley Coal Train 41157
18030488
Long Erica 208

*HARB Hindquarter 473 JH

HARB Flora D75 JH
18638329

HARB Flora B68 JH

#*Kesslers Frontman R001
*Boyd Erica Dianna 9054
#*SAV Final Answer 0035
Thomas Erica 4561

+HARB Stur-D 191 JH
#*HARB Princess Vel 980 JH
HARB Stud 282 JH
HARB Flora Z95 HH

CW
I+49 35%
MARB
I+27 85%
RE
I+70 30%
FAT
I+032 80%

CED	BW	WW	YW	SC	DOC	MILK	\$EN
+5 60%	+2.5 80%	+73 10%	+129 10%	I+1.08 35%	I+17 55%	+29 25%	-29 90%
\$M	\$W	\$B	\$C	ACT BW	RATIO	ADJ. WW	RATIO
+57 55%	+73 15%	+128 55%	+223 55%	86	106	674	105

Coal Train son with a ton of stretch and capacity. He will make a tremendous set of feeding cattle.



Barstow Bankroll B73 - Sire of Lot 34 and 35

34

D A R Bankroll 0149

Birth Date: 02-16-2020 Bull 19960404 Tattoo: 0149

*Barstow Bankroll B73
18036327

#*Barstow Cash
Barstow Queen W16
#CAR Efficient 534
#Barstow Miss Dianna X128

HARB Horsepower 561 JH

DAR Sophie R769
19653479

#*PA Power Tool 9108
#HARB Frances 770 JH
8N Upstart 102
DAR Sophie M727

CW
I+40 60%
MARB
I+75 30%
RE
I+53 55%
FAT
I+015 55%

CED	BW	WW	YW	SC	DOC	MILK	\$EN
+12 10%	-9 15%	+58 45%	+110 35%	I+1.20 25%	I+21 35%	+21 80%	-17 65%
\$M	\$W	\$B	\$C	ACT BW	RATIO	ADJ. WW	RATIO
+57 55%	+54 60%	+144 30%	+244 30%	72	93	612	98

A sub-zero BW bull by Bankroll. His dam by Horsepower has an weaning ratio of 102. The Horsepower daughters are proving themselves to be great females with superb udders.

35

D A R Bankroll 0151

Birth Date: 02-22-2020 Bull *19960411 Tattoo: 0151

*Barstow Bankroll B73
18036327

#*Barstow Cash
Barstow Queen W16
#CAR Efficient 534
#Barstow Miss Dianna X128

#*Basin Payweight 1682

*DAR Blackcap R701
18903275

#*Basin Payweight 006S
21AR O Lass 7017
#*Plattmere Weigh Up K360
*Rita 1194 of 2536 Rito 616

CW
+56 20%
MARB
+48 60%
RE
+65 40%
FAT
-006 30%

CED	BW	WW	YW	SC	DOC	MILK	\$EN
+14 4%	+0 25%	+71 15%	+125 15%	+1.34 20%	+25 20%	+32 10%	-26 85%
\$M	\$W	\$B	\$C	ACT BW	RATIO	ADJ. WW	RATIO
+74 15%	+85 3%	+141 35%	+257 20%	78	100	590	94

Sleep all night heifer bull by Bankroll. His dam is a flush brother to D A R Bull City R111 that was 5th of 700 head in the ADG at the 2018 Midland Bull Test. Calving ease and growth all in one.

36

D A R Southern Charm 0124

Birth Date: 02-23-2020 Bull *19961795 Tattoo: 0124

*BUBS Southern Charm AA31
17853196

*Silveiras Conversion 8064
+EXG Saras Dream S609 R3
#*Connealy Stimulus 8419
Hickory Hill Erica TA32

*LD Emblazon 999

*DAR Maxine P104
18244844

#*OCC Emblazon 854E
#*SH Forever Lady 3124 5118
#*Styles Upgrade J59
+BJ Objective 8212

CW
+41 55%
MARB
+71 35%
RE
+83 15%
FAT
+008 45%

CED	BW	WW	YW	SC	DOC	MILK	\$EN
+7 45%	+2.2 75%	+74 10%	+118 20%	+1.12 30%	+17 55%	+24 60%	-14 55%
\$M	\$W	\$B	\$C	ACT BW	RATIO	ADJ. WW	RATIO
+78 10%	+79 10%	+137 40%	+256 20%	80	100	515	84

This Southern Charm son is member of the same flush as our lead off heifer, Lot 103, as well as the bulls selling as Lots 6, 7, 8, 9, 10. Maxine P104 is arguably the best cow on the ranch.



Deer Valley Coal Train 41157 - Sire of Lot 32 and 33

33

D A R Coal Train 0185

Birth Date: 03-04-2020 Bull 19940474 Tattoo: 0184

*Deer Valley Coal Train 41157
18030488

*Boyd Signature 1014
Long Erica 208

ANGUSGS

Yardley Royal Jet W251

HARB Black Lady D77 JH
18638305

HARB Black Lady Z61 JH

#*Kesslers Frontman R001
*Boyd Erica Dianna 9054
#*SAV Final Answer 0035
Thomas Erica 4561

#OCC Jet Stream 825J
Miss Yardley R192
#*SAV Final Answer 0035
#HARB Black Lady 375 JH

CW
I+44 45%
MARB
I+24 85%
RE
I+60 45%
FAT
I+032 80%

CED	BW	WW	YW	SC	DOC	MILK	\$EN
+7 45%	+2 30%	+59 45%	+107 40%	I+1.18 25%	I+15 60%	+25 50%	-15 55%
\$M	\$W	\$B	\$C	ACT BW	RATIO	ADJ. WW	RATIO
+47 85%	+60 40%	+119 70%	+201 80%	80	99	598	94

Here is another Coal Train bull. He offer calving ease and eye appeal. His dam, Black Lady D77, was one our favorite young cows when we purchased the Harrison cow herd.



D A R Coal Train 0185 - Lot 33

Dix Angus Ranch

37

D A R Southern Charm 0123

Birth Date: 03-04-2020

Bull *19961780

Tattoo: 0123

*BUBS Southern Charm AA31
17853196

*Silveiras Conversion 8064
*Hickory Hill Erica 009

#BT Crossover 758N
+EXG Saras Dream S609 R3
#*Connealy Stimulus 8419
Hickory Hill Erica TA32

ANGUSGS

*DAR Erica Q602
18564103

8N Upstart 102
Summitcrest Erica 105X

#Sitz Upward 307R
CCA Blackcap 803
#Salt Creek Bob 7003
#Summitcrest Erica 359P

CW
+30 85%
MARB
+60 45%
RE
+41 75%
FAT
+036 85%

CED	BW	WW	YW	SC	DOC	MILK	\$EN
+10 20%	+8 40%	+72 10%	+113 30%	+1.74 5%	+11 80%	+25 50%	-10 40%
\$M	\$W	\$B	\$C	ACT BW	RATIO	ADJ. WW	RATIO
+69 25%	+82 5%	+103 90%	+203 75%	74	93	600	96

A moderate framed deep barreled son of Southern Charm. Calving-ease and maternal excellence with great fleshing ability in this bull. His Upstart dam has a perfect udder.



D A R Roughrider 0122 - Lot 40

40

D A R Roughrider 0122

Birth Date: 03-19-2020

Bull +*19960371

Tattoo: 0122

*Ellingson Roughrider 4202
17933463

#*Connealy Earnan 076E
*EA Blackclass 8914

#*Connealy Consensus
+*Brazilia of Conanga 3991 839A
LT Curve Bender 4810 of EA
+SAV Blackclass 374

ANGUSGS

*DAR Maxine P104
18244844

*LD Emblazon 999
*DAR Ms Upgrade N834

#*OCC Emblazon 854E
#*SH Forever Lady 3124 5118
#*Styles Upgrade J59
+BJ Objective 8212

CW
+34 75%
MARB
+48 60%
RE
+49 65%
FAT
+017 60%

CED	BW	WW	YW	SC	DOC	MILK	\$EN
+3 75%	+1.3 50%	+58 45%	+105 45%	+1.22 25%	+16 60%	+24 60%	-7 35%
\$M	\$W	\$B	\$C	ACT BW	RATIO	ADJ. WW	RATIO
+71 20%	+61 40%	+117 70%	+223 55%	88	100	606	100

This is a Roughrider son that is a maternal brother to our own Herd Sire, D A R Turbo R146, who produced the highest selling bull in the history of our program in the 2020 sale to Molitor Angus, Zenda.

38

D A R 316 Capitalist 0188 [OWP]

Birth Date: 02-26-2020

Bull 19973451

Tattoo: 0188

*LD Capitalist 316
17666102

#*Connealy Capitalist 028
LD Dixie Erica 2053

#*SAV Final Answer 0035
Prides Pita of Conanga 8821
#CA Future Direction 5321
LD Dixie Erica Oar 0853

HARB Princess Vel C72 JH
18380073

#*PA Power Tool 9108
HARB RCA Princess Vel A5

#*GAR Predestined
*Shamrocks Beebee Queen 3095
*TC Fortright 9284
HARB RCA Princess Vel Y1

CW
I+49 35%
MARB
I+60 45%
RE
I+52 60%
FAT
I+046 90%

CED	BW	WW	YW	SC	DOC	MILK	\$EN
+14 4%	-1.1 10%	+58 45%	+102 50%	I+1.08 35%	I+17 55%	+31 15%	-14 55%
\$M	\$W	\$B	\$C	ACT BW	RATIO	ADJ. WW	RATIO
+62 40%	+69 20%	+142 30%	+246 30%	72	88	627	98

A Capitalist 316 son that is certainly easy on the eye. He has been spotted by anybody that has walked the bull pen since weaning time.

41

D A R Spur 0130

Birth Date: 03-04-2020

Bull 19949522

Tattoo: 0130

*Connealy Spur
17304082

#*Connealy Stimulus 8419
#Jazza of Conanga 8594

#*HA Power Alliance 1025
Black Creea of Conanga 5332
#*TC Grid Topper 355
Jemma of Conanga 5614

ANGUSGS

Molitor 3878 Lady 353-656
18702612

HA Outside 3878
Molitor FA Lady 905-353

#*KG Solution 0018
#*HA Blackcap Lady 1914
#*SAV Final Answer 0035
Molitor IN Lady 782-905

CW
+39 60%
MARB
+58 45%
RE
+40 75%
FAT
+043 90%

CED	BW	WW	YW	SC	DOC	MILK	\$EN
+4 70%	+3.2 90%	+65 25%	+112 30%	+60 65%	+27 10%	+20 85%	-17 65%
\$M	\$W	\$B	\$C	ACT BW	RATIO	ADJ. WW	RATIO
+78 10%	+56 50%	+123 60%	+238 40%	92	115	635	101

A moderate frame bull by the Pathfinder Sire, Connealy Spur. His Outside dam is an example of the "ideal" Angus cow when you see her in the pasture.

39

D A R Upstart 0193

Birth Date: 02-26-2020

Bull 19942508

Tattoo: 0193

8N Upstart 102
16984021

#Sitz Upward 307R
CCA Blackcap 803

#*Connealy Onward
Sitz Henrietta Pride 81M
#*SAV Final Answer 0035
Blu Top Ella Blackcap M054

ANGUSGS

*DAR Jilt Q684
18575599

#*Connealy Capitalist 028
DAR Jilt Q471

#*SAV Final Answer 0035
Prides Pita of Conanga 8821
DAR JD Confidence GB58
#CRD Jilt 5103

CW
+35 70%
MARB
+13 95%
RE
+56 50%
FAT
+016 60%

CED	BW	WW	YW	SC	DOC	MILK	\$EN
+4 70%	+1.4 55%	+62 35%	+104 45%	+1.21 25%	+19 45%	+28 30%	-23 80%
\$M	\$W	\$B	\$C	ACT BW	RATIO	ADJ. WW	RATIO
+57 55%	+68 25%	+91 95%	+175 95%	82	102	679	108

A larger statured Upstart son with added performance. The Upstart females have been outstanding for us for a long time now. They all have perfect udders and fleshing ability that is 2nd to none. A full brother to 0193 is working at Govert Farms, Cunningham, Ks.



D A R Upstart 0193 - Lot 39

Dix Angus Ranch

42

D A R Spur 0131 [OHF]

Birth Date: 03-11-2020

Bull 19949525

Tattoo: 0131

****Connealy Spur**
17304082

#*Connealy Stimulus 8419

#Jazza of Conanga 8594

ANGUSGS

#*Deer Valley All In

DAR Althea Q681
18575600

DAR Althea O446

#*HA Power Alliance 1025
Black Creea of Conanga 5332
#*TC Grid Topper 355
Jemma of Conanga 5614

#*AAR Ten X 7008 SA
#*Deer Valley Rita 0274
#*EXAR Upshot 0562B
#DAR HD Althea 5210 HB98 J172

CW
+32 80%
MARB
+91 15%
RE
+44 70%
FAT
+001 35%

CED	BW	WW	YW	SC	DOC	MILK	\$EN
+14 4%	+6 35%	+53 65%	+98 55%	+1.19 25%	+18 50%	+24 60%	-2 20%
\$M	\$W	\$B	\$C	ACT BW	RATIO	ADJ. WW	RATIO
+74 15%	+57 50%	+135 40%	+249 25%	84	105	601	96

This moderate BW son of Spur is one of the highest marbling bulls in the offering. If you are taking your calves to finish this would be an ideal bull for your operation to gain carcass premiums.



D A R Midnight 0253 - Lot 43

43

D A R Midnight 0253

Birth Date: 02-26-2020

Bull *19942523

Tattoo: 0253

+*DAR Midnight 6050
18574077

#*Connealy Black Granite

#*Hedgewood Rita 301

ANGUSGS

#*Basin Payweight 1682

+*DAR Erica S861
19424499

Summitcrest Erica 105X

#*Connealy Consensus 7229
#Eura Elga of Conanga 9109
#*Connealy Capitalist 028
+Hedgewood Rita 521

#*Basin Payweight 006S
21AR O Lass 7017
#Salt Creek Bob 7003
#Summitcrest Erica 359P

CW
+48 35%
MARB
+17 90%
RE
+62 40%
FAT
+018 60%

CED	BW	WW	YW	SC	DOC	MILK	\$EN
+1 90%	+2.7 80%	+77 5%	+127 15%	-1.11 95%	+20 40%	+24 60%	-25 85%
\$M	\$W	\$B	\$C	ACT BW	RATIO	ADJ. WW	RATIO
+65 35%	+77 10%	+109 80%	+206 75%	72	105	614	107

A moderate birthweight son of Midnight combined with a Payweight daughter. He has some serious performance potential to be used on a set of heifers.



DAR Gunslinger R177 - Sire of Lots 44-46

44

D A R Gunslinger 0214

Birth Date: 03-06-2020

Bull *19942408

Tattoo: 0214

+*DAR Gunslinger R177
18965558

*L/R Colt 45 3045

Summitcrest Elba 1Y90

ANGUSGS

#*EXAR Denver 2002B

+*DAR Rita R734
18966338

*Hedgewood Rita 107

S/C Medicine Man 01Y7
#Summitcrest Blizzard 0X62
#*Summitcrest Complete 1P55
Summitcrest Elba 0K96

#*EXAR Upshot 0562B
+Exar Royal Lass 1067
#*SAV Bismarck 5682
+Daltons Rita 911

CW
+37 65%
MARB
+61 45%
RE
+87 15%
FAT
+003 40%

CED	BW	WW	YW	SC	DOC	MILK	\$EN
+11 15%	-9 15%	+56 55%	+105 45%	+1.50 15%	+4 95%	+28 30%	-13 50%
\$M	\$W	\$B	\$C	ACT BW	RATIO	ADJ. WW	RATIO
+51 75%	+65 30%	+135 40%	+226 50%	60	78	624	100

This son of Gunslinger is a sub-zero BW, double-digit CED bull that doesn't lose any ground at weaning. He is one of the highest RE EPD Bulls in the offering. Don't miss this one.

45

D A R Gunslinger 0216

Birth Date: 03-09-2020

Bull 19942409

Tattoo: 0216

+*DAR Gunslinger R177
18965558

*L/R Colt 45 3045

Summitcrest Elba 1Y90

ANGUSGS

#*SAV Resource 1441

DAR Jilt R716
18901324

DAR Jilt M723

S/C Medicine Man 01Y7
#Summitcrest Blizzard 0X62
#*Summitcrest Complete 1P55
Summitcrest Elba 0K96

+Rito 707 of Ideal 3407 7075
*SAV Blackcap May 4136
#*Hoover Dam
DAR CD Jilt HA40

CW
+47 40%
MARB
+18 90%
RE
+58 50%
FAT
+022 65%

CED	BW	WW	YW	SC	DOC	MILK	\$EN
+4 70%	+5 35%	+59 45%	+114 30%	+2.48 1%	+35 1%	+29 25%	-15 55%
\$M	\$W	\$B	\$C	ACT BW	RATIO	ADJ. WW	RATIO
+66 30%	+66 30%	+122 65%	+224 55%	78	100	627	100

Another calving-ease son of Gunslinger with added growth. Maternal genetics bred deep with a combination of Resource and Hoover Dam stacked up on the maternal side of the pedigree.



Embryo Transfer day with Dr. Gray and his crew, Cross Country Genetics.

46

D A R Gunslinger 0224

Birth Date: 03-19-2020

Bull 19942414

Tattoo: 0224

+*DAR Gunslinger R177
18965558

*L/R Colt 45 3045

Summitcrest Elba 1Y90

ANGUSGS

#*VAR Discovery 2240

DAR Velda R745
18942336

#DAR Velda M724

S/C Medicine Man 01Y7
#Summitcrest Blizzard 0X62
#*Summitcrest Complete 1P55
Summitcrest Elba 0K96

#*AAR Ten X 7008 SA
#*Deer Valley Rita 0308
#*Styles Upgrade J59
#DAR JD Velda IF21

CW
+35 70%
MARB
+52 55%
RE
+38 80%
FAT
+032 80%

CED	BW	WW	YW	SC	DOC	MILK	\$EN
+9 30%	-1.1 10%	+66 25%	+122 20%	+2.09 2%	+21 35%	+31 15%	-20 70%
\$M	\$W	\$B	\$C	ACT BW	RATIO	ADJ. WW	RATIO
+52 70%	+80 10%	+104 85%	+187 90%	78	100	682	109

This sub-zero BW EPD son of Gunslinger is my pick of the sire group as I walk through the pen. His dam is a direct daughter of Velda M724 who just entered our donor pen last spring.

Dix Angus Ranch

47

D A R Roughrider 0114

Birth Date: 03-17-2020

Bull 19960390

Tattoo: 0114

#*Connealy Earnan 076E
*Ellingson Roughrider 4202
17933463
*EA Blackclass 8914

#*Connealy Consensus
+*Brazila of Conanga 3991 839A
LT Curve Bender 4810 of EA
+SAV Blackclass 374

ANGUSGS

#*SAV Final Answer 0035

#Sitz Traveler 8180
SAV Emulous 8145
#Connealy Danny Boy
Molitor Foc Blkbird 275-426

Molitor FA Blackbird 878-046
16799255
Molitor Dan Blkbird 426-878

CED	BW	WW	YW	SC	DOC	MILK	\$EN
+10	20%	-9	15%	+53	65%	+89	75%
\$M	\$W	\$B	\$C	ACT BW	RATIO	ADJ. WW	RATIO
+81	4%	+57	50%	+105	85%	+217	60%
82	102	690	110				

This Roughrider son is a maternal brother to the Lot 1 bull at the 2018 Midland Bull Test, D A R Resolution R106. His impressive Final Answer dam has produced a weaning ratio of 9@104.



U-2 Coalition 206C - Sire of Lots 48-51

49

D A R Coalition 0108

Birth Date: 03-16-2020

Bull *19960478

Tattoo: 0108

HF Syndicate 213Z
*U-2 Coalition 206C
18626847
U2 Erelite 109Z

ANGUSGS

#*EXAR Upshot 0562B
*Deer Valley Miss Rita 3292
17577882
*Basin Miss Rita 9675

#*Connealy Consensus 7229
HF Miss Blackcap 27R
Young Dale Xclusive 25X
U-2 Erelite 1X

#Sitz Upward 307R
#*EXAR Barbara T020
#CRA Bextor 872 5205 608
SS Miss Rita R011 7R8

CED	BW	WW	YW	SC	DOC	MILK	\$EN
+8	35%	+9	45%	+63	30%	+122	20%
\$M	\$W	\$B	\$C	ACT BW	RATIO	ADJ. WW	RATIO
+79	10%	+71	20%	+153	20%	+277	10%
82	101	660	105				

This son of Coalition is from one of my favorite cows in the herd. She was always easy to find when driving the pasture. She was selected as a heifer calf from Deer Valley Farms in 2013. Some very good females have been retained from her. This bull should make great daughters in combination with 3292.

50

D A R Coalition 0110

Birth Date: 02-21-2020

Bull +*19960456

Tattoo: 0110

HF Syndicate 213Z
*U-2 Coalition 206C
18626847
U2 Erelite 109Z

ANGUSGS

#*Plattmeyer Weigh Up K360
*Deer Valley Blackcap 51291
18208025
*Rita 1194 of 2536 Rito 616

#*Connealy Consensus 7229
HF Miss Blackcap 27R
Young Dale Xclusive 25X
U-2 Erelite 1X

#Sitz Upward 307R
#Barbara of Plattmeyer 337
#Rito 616 of 4B20 6807
GAR Precision 2536

CED	BW	WW	YW	SC	DOC	MILK	\$EN
+7	45%	+8	40%	+60	40%	+105	45%
\$M	\$W	\$B	\$C	ACT BW	RATIO	ADJ. WW	RATIO
+57	55%	+66	30%	+119	70%	+217	70%
72	91	579	95				

Another member of the 51291 x Coalition flush. These bulls are pretty consistent from end to end. Two maternal brothers by Payweight are working in Idaho for Chris Drakos.

51

D A R Coalition 0111

Birth Date: 02-21-2020

Bull +*19960457

Tattoo: 0111

HF Syndicate 213Z
*U-2 Coalition 206C
18626847
U2 Erelite 109Z

ANGUSGS

#*Plattmeyer Weigh Up K360
*Deer Valley Blackcap 51291
18208025
*Rita 1194 of 2536 Rito 616

#*Connealy Consensus 7229
HF Miss Blackcap 27R
Young Dale Xclusive 25X
U-2 Erelite 1X

#Sitz Upward 307R
#Barbara of Plattmeyer 337
#Rito 616 of 4B20 6807
GAR Precision 2536

CED	BW	WW	YW	SC	DOC	MILK	\$EN
+8	35%	+1.9	65%	+63	30%	+110	35%
\$M	\$W	\$B	\$C	ACT BW	RATIO	ADJ. WW	RATIO
+58	55%	+67	25%	+123	60%	+218	60%
74	93	515	84				

Here is an added performance son of Coalition. Look for him to produce more pounds at weaning and yearling. His daughters shall not disappoint either.



Ellingson Roughrider 4202 - Sire of Lot 47

48

D A R Coalition 0109

Birth Date: 03-17-2020

Bull 19961802

Tattoo: 0109

HF Syndicate 213Z
*U-2 Coalition 206C
18626847
U2 Erelite 109Z

ANGUSGS

*TC Forthright 9284
HARB Princess Vel A66 JH
17735799
#*HARB Princess Vel 980 JH

#*Connealy Consensus 7229
HF Miss Blackcap 27R
Young Dale Xclusive 25X
U-2 Erelite 1X

#*Connealy Right Answer 746
#TC Marcia 1069
#*Connealy Onward
#HARB Princess Vel 36 JH

CED	BW	WW	YW	SC	DOC	MILK	\$EN
+7	45%	+2.4	75%	+65	25%	+122	20%
\$M	\$W	\$B	\$C	ACT BW	RATIO	ADJ. WW	RATIO
+55	65%	+56	50%	+139	35%	+235	40%
88	107	643	101				

Coalition son produced from the impressive Princess Vel cow family. Power up a set of cows with this bull. Deep sided, thick made bull with loads of capacity and performance.



Harb Princess Vel z88 JH - Maternal Sister to the dam of Lot 48

Dix Angus Ranch

52

D A R Contribution 0247

Birth Date: 04-01-2020

Bull *19942446

Tattoo: 0247

Sitz Investment 648B
17758536
Sitz Barabamere Nell 18U
ANGUSGS
Summitcrest Erica 105X
16875732
#Sitz Investment 660Z
#Sitz Ellunas Elite 656T
#*Rito 112 of 2536 Rito 616
Sitz Barabamere Nell 1280
#Salt Creek Bob 7003
+Hoff Insignia 697 224
Hoff Blackbird SC 244 939
B/R New Perspective 079
Summitcrest Erica 032M

CED	BW	WW	YW	SC	DOC	MILK	\$EN
+5 60%	+1.0 45%	+57 50%	+104 45%	+96 40%	+4 95%	+35 4%	-26 85%
\$M	\$W	\$B	\$C	ACT BW	RATIO	ADJ. WW	RATIO
+45 85%	+68 25%	+128 55%	+211 70%	84	105	726	116

This is the best Investment son we've ever raised. The Erica 105X cow is superior when it comes to making good ones. She produced a daughter to sell for \$26,000 in the 2016 Genomic Gems Sale, Texas. She's proven her worth with a production that speaks for itself as she has turned in a weaning ratio of 8@107.



BSF Hot Lotto 1401 - Sire of Lots 53-55

54

D A R Hot Lotto 0146

Birth Date: 03-13-2020

Bull +*19969712

Tattoo: 0146

+*BSF Hot Lotto 1401
17919726
ANGUSGS
+*DAR Ms Upshot N842
17613885
#*Barstow Cash
#BSF Princess EL Cap W2
#*EXAR Upshot 0562B
+*44 Ms New Design 8051
#*Sitz Dash 10277
Barstow Queen W16
*Silveiras El Capitan 6510
BSF Princess TCF N2
#Sitz Upward 307R
#*EXAR Barbara T020
#*SS Objective T510 OT26
+GAR 1407 New Design L194

CED	BW	WW	YW	SC	DOC	MILK	\$EN
+3 75%	+3.6 95%	+81 3%	+137 5%	+1.16 90%	+27 10%	+20 85%	-29 90%
\$M	\$W	\$B	\$C	ACT BW	RATIO	ADJ. WW	RATIO
+47 85%	+71 20%	+140 35%	+229 50%	78	100	631	100

Hot Lotto is the power bull of this flush and he offers the most growth to go along with it. Wide based bull from the ground up with a ton of muscle and performance.



D A R Hot Lotto 0144 - Lot 55

53

D A R Hot Lotto 0147

Birth Date: 03-14-2020

Bull +*19969714

Tattoo: 0147

+*BSF Hot Lotto 1401
17919726
ANGUSGS
+*DAR Ms Upshot N842
17613885
#*Barstow Cash
#BSF Princess EL Cap W2
#*EXAR Upshot 0562B
+*44 Ms New Design 8051
#*Sitz Dash 10277
Barstow Queen W16
*Silveiras El Capitan 6510
BSF Princess TCF N2
#Sitz Upward 307R
#*EXAR Barbara T020
#*SS Objective T510 OT26
+GAR 1407 New Design L194

CED	BW	WW	YW	SC	DOC	MILK	\$EN
+8 35%	+1.8 65%	+68 20%	+111 35%	+4.9 70%	+28 10%	+22 75%	-13 50%
\$M	\$W	\$B	\$C	ACT BW	RATIO	ADJ. WW	RATIO
+63 40%	+70 20%	+123 60%	+223 55%	74	93	673	110

A stout made Hot Lotto son from the great N842 donor cow. Calving Ease bull with a with a great look and one of the highest Marbling bulls in the offering.

55

D A R Hot Lotto 0144

Birth Date: 02-25-2020

Bull +*19969711

Tattoo: 0144

+*BSF Hot Lotto 1401
17919726
ANGUSGS
+*DAR Ms Upshot N842
17613885
#*Barstow Cash
#BSF Princess EL Cap W2
#*EXAR Upshot 0562B
+*44 Ms New Design 8051
#*Sitz Dash 10277
Barstow Queen W16
*Silveiras El Capitan 6510
BSF Princess TCF N2
#Sitz Upward 307R
#*EXAR Barbara T020
#*SS Objective T510 OT26
+GAR 1407 New Design L194

CED	BW	WW	YW	SC	DOC	MILK	\$EN
+6 55%	+3.0 85%	+76 10%	+130 10%	+1.31 20%	+21 35%	+27 35%	-30 90%
\$M	\$W	\$B	\$C	ACT BW	RATIO	ADJ. WW	RATIO
+53 70%	+76 10%	+139 35%	+233 45%	80	104	630	103

Another big butted Lotto son from the N842 flush. He's a very complete individual that will sire some real performance cattle in the future.



D A R Hot Lotto 0147 - Lot 53

Dix Angus Ranch

56

D A R 4604 Summit 0210

Birth Date: 02-29-2020 Bull *19960492 Tattoo: 0210

S Summit 4604 17849710	*S Summit 956	#GDAR Game Day 449	CW
ANGUSGS	S Lass 8245	#S Pride Anna 709	+59 15%
*DAR Rita Q600 18564116	*KG Solution 0018	#S Chisum 6175	MARB
		S Lass 627	+53 55%
		#MOGCK Sure Shot	RE
		KG Rito Lady 8724	+58 50%
		#SS Objective T510 OT26	FAT
		+BJ Predestined 7077	+049 95%

CED	BW	WW	YW	SC	DOC	MILK	\$EN
+11 15%	+1.1 45%	+69 15%	+128 10%	+57 65%	+29 10%	+20 85%	-17 65%
\$M	\$W	\$B	\$C	ACT BW	RATIO	ADJ. WW	RATIO
+72 20%	+66 30%	+141 35%	+255 20%	76	95	622	99

A Calving Ease and high-performance son of Summit 4604 combined with our High \$C cow, Rita Q600. A maternal brother is working for the Kriley Brothers, Stockton.



D A R 38 Special 0204 - Lot 59

57

D A R Horsepower 0229

Birth Date: 03-11-2020 Bull *19942421 Tattoo: 0229

HARB Horsepower 561 JH 18339461	*PA Power Tool 9108	*GAR Predestined	CW
ANGUSGS	#HARB Frances 770 JH	*Shamrocks Beebe Queen 3095	+66 5%
*DAR Eldorene Q616 18564105	Sitz Investment 648B	#SAV 8180 Traveler 004	MARB
	#SandPoint Eldorene 3033	HARB Frances Erica 180 SH	+47 60%
		*Sitz Investment 660Z	RE
		Sitz Barbamere Nell 18U	+53 55%
		*AAR Ten X 7008 SA	FAT
		SandPoint Eldorene 1034	-012 20%

CED	BW	WW	YW	SC	DOC	MILK	\$EN
+3 75%	+3.5 95%	+90 1%	+154 1%	+54 70%	+24 20%	+21 80%	-32 95%
\$M	\$W	\$B	\$C	ACT BW	RATIO	ADJ. WW	RATIO
+65 35%	+82 5%	+148 25%	+257 20%	92	115	708	113

A very impressive Horsepower son with exceptional performance. You'll find him with extra depth of rib. He's a long spined bull that is packed with meat. He weaned off at over 700#. Scale Crushing performance in this bull.



D A R Horsepower 0229 - Lot 57

59

D A R 38 Special 0204

Birth Date: 02-25-2020 Bull +*19973516 Tattoo: 0204

*Baldridge 38 Special 18229487	*EF Commando 1366	*EF Complement 8088	CW
ANGUSGS	*Baldridge Isabel Y69	Riverbend Young Lucy W1470	+38 65%
*HARB Jerica 876 JH 16574632	*Connealy Onward	#Styles Upgrade J59	MARB
	+HARB Juanada Erica 280 JH	+Baldridge Isabel T935	+66 40%
		#Connealy Lead On	RE
		Altune of Conanga 6104	+15 95%
		#Sitz Alliance 6595	FAT
		Juanada Erica 9024 HARB	+070 95%

CED	BW	WW	YW	SC	DOC	MILK	\$EN
+9 30%	+1 25%	+67 20%	+116 25%	+1.65 10%	+19 45%	+25 50%	-15 55%
\$M	\$W	\$B	\$C	ACT BW	RATIO	ADJ. WW	RATIO
+69 25%	+74 15%	+108 85%	+209 70%	72	91	621	102

Here is a high performance son of 38 Special. His dam, Jerica 876, produced a son to sell for \$36,000 in the 2016 Midland Bull Test, HARB Playboy 581 JH. Proven cow family behind this bull.

60

D A R 38 Special 0205

Birth Date: 02-25-2020 Bull +*19973517 Tattoo: 0205

*Baldridge 38 Special 18229487	*EF Commando 1366	*EF Complement 8088	CW
ANGUSGS	*Baldridge Isabel Y69	Riverbend Young Lucy W1470	+29 85%
*HARB Jerica 876 JH 16574632	*Connealy Onward	#Styles Upgrade J59	MARB
	+HARB Juanada Erica 280 JH	+Baldridge Isabel T935	+1.09 10%
		#Connealy Lead On	RE
		Altune of Conanga 6104	+16 95%
		#Sitz Alliance 6595	FAT
		Juanada Erica 9024 HARB	+067 95%

CED	BW	WW	YW	SC	DOC	MILK	\$EN
+11 15%	+3 30%	+48 80%	+92 70%	+1.24 25%	+26 15%	+43 1%	-9 40%
\$M	\$W	\$B	\$C	ACT BW	RATIO	ADJ. WW	RATIO
+67 30%	+70 20%	+126 55%	+230 45%	84	105	587	96

A bigger statured 38 Special son with added growth. His dam, Jerica 876, produced a son to sell for \$36,000 in the 2016 Midland Bull Test, HARB Playboy 581 JH.



MOGCK Entice - Sire of Lot 58

58

D A R Entice 0211

Birth Date: 02-14-2020 Bull 19961805 Tattoo: 0211

*MOGCK Entice 18952921	SydGen Enhance	*SydGen Exceed 3223	CW
ANGUSGS	*MOGCK Erica 2255	SydGen Rita 2618	I+47 40%
HARB Jerica E68 JH 19050543	*HARB Hindquarter 473 JH	Mogck Sure Shot 253	MARB
		MOGCK Erica 2162	I+.65 40%
		+HARB Stur-D 191 JH	RE
		#+HARB Princess Vel 980 JH	I+.57 50%
		#TC Aberdeen 759	FAT
		+HARB Juanada Erica 280 JH	I+.015 55%

CED	BW	WW	YW	SC	DOC	MILK	\$EN
+8 35%	+1.2 50%	+64 30%	+115 25%	N/A	N/A	+28 30%	-19 70%
\$M	\$W	\$B	\$C	ACT BW	RATIO	ADJ. WW	RATIO
+62 40%	+65 30%	+142 30%	+246 30%	78	99	636	100

This Entice son has more stretch to him than most. With added carcass value and performance he is sure to make some outstanding feeder cattle.

Dix Angus Ranch

61

D A R 38 Special 0203

Birth Date: 02-24-2020

Bull +*19973515

Tattoo: 0203

*Baldridge 38 Special
18229487

ANGUSGS

+HARB Jerica 876 JH
16574632

#*EF Commando 1366

*Baldridge Isabel Y69

#*Connealy Onward

+HARB Juanada Erica 280 JH

#*EF Complement 8088

Riverbend Young Lucy W1470

#*Styles Upgrade J59

+Baldridge Isabel T935

#Connealy Lead On

Altune of Conanga 6104

#Sitz Alliance 6595

Juanada Erica 9024 HARB

CW
+24 90%
MARB
+1.10 10%
RE
+.07 95%
FAT
+.082 95%

CED	BW	WW	YW	SC	DOC	MILK	\$EN
+5 60%	+1.9 65%	+55 55%	+94 65%	+94 40%	+19 45%	+27 35%	-8 35%
\$M	\$W	\$B	\$C	ACT BW	RATIO	ADJ. WW	RATIO
+73 15%	+60 40%	+118 70%	+226 50%	88	111	535	88

Another 38 Special son with extra stretch to him. His dam, Jerica 876, produced a son to sell for \$36,000 in the 2016 Midland Bull Test, HARB Playboy 581 JH.



D A R Countdown 0162 - Lot 64

64

D A R Countdown 0162

Birth Date: 01-30-2020

Bull 19971850

Tattoo: 0162

#Connealy Countdown
17585522

ANGUSGS

DAR Princess Vel S819
19413105

#*Connealy Final Solution

Entarna of Conanga 140

HARB JH High Life 567

#*HARB Princess Vel 988 JH

#Connealy Answer 71

Este of Conanga 364

#Connealy Reward

Enta of Conanga 9802

#*VAR Reserve 1111

HARB Wendy 678 JH

#*Connealy Onward

#HARB Princess Vel 36 JH

CW
+23 95%
MARB
+28 80%
RE
+.47 65%
FAT
+.046 90%

CED	BW	WW	YW	SC	DOC	MILK	\$EN
+10 20%	-.2 20%	+53 65%	+87 75%	+11 90%	+13 70%	+29 25%	-6 30%
\$M	\$W	\$B	\$C	ACT BW	RATIO	ADJ. WW	RATIO
+52 70%	+66 30%	+89 95%	+167 95%	60	89	546	95

A calving ease son from Countdown. Born with extra vigor, like all of the other Countdown progeny. Heifer Bull

62

D A R 38 Special 0207

Birth Date: 03-01-2020

Bull +*19973519

Tattoo: 0207

*Baldridge 38 Special
18229487

ANGUSGS

+HARB Jerica 876 JH
16574632

#*EF Commando 1366

*Baldridge Isabel Y69

#*Connealy Onward

+HARB Juanada Erica 280 JH

#*EF Complement 8088

Riverbend Young Lucy W1470

#*Styles Upgrade J59

+Baldridge Isabel T935

#Connealy Lead On

Altune of Conanga 6104

#Sitz Alliance 6595

Juanada Erica 9024 HARB

CW
+36 70%
MARB
+.75 30%
RE
+.23 95%
FAT
+.051 95%

CED	BW	WW	YW	SC	DOC	MILK	\$EN
+10 20%	+1.4 55%	+61 35%	+107 40%	+1.27 20%	+24 20%	+36 3%	-23 80%
\$M	\$W	\$B	\$C	ACT BW	RATIO	ADJ. WW	RATIO
+70 20%	+75 15%	+113 75%	+217 60%	84	106	648	106

A long sided bull with plenty of guts and growth. His dam, Jerica 876, produced a son to sell for \$36,000 in the 2016 Midland Bull Test, HARB Playboy 581 JH.

65

D A R Countdown 0165

Birth Date: 02-10-2020

Bull *19949491

Tattoo: 0165

#Connealy Countdown
17585522

ANGUSGS

DAR Gina S877
19412144

#*Connealy Final Solution

Entarna of Conanga 140

HARB Horsepower 561 JH

DAR Gina O409

#Connealy Answer 71

Este of Conanga 364

#Connealy Reward

Enta of Conanga 9802

#*PA Power Tool 9108

#HARB Frances 770 JH

8N Upstart 102

DAR Gina M731

CW
+35 70%
MARB
+34 75%
RE
+.46 70%
FAT
+.024 70%

CED	BW	WW	YW	SC	DOC	MILK	\$EN
+6 55%	+2.0 70%	+53 65%	+100 55%	-.01 95%	+15 60%	+33 10%	-7 35%
\$M	\$W	\$B	\$C	ACT BW	RATIO	ADJ. WW	RATIO
+79 10%	+63 35%	+118 70%	+232 45%	80	116	640	111

A nice designed Countdown son from a big framed Horsepower that was 640 pounds at weaning from a 1st calving heifer.

63

D A R Countdown 0163

Birth Date: 01-31-2020

Bull *19971851

Tattoo: 0163

#Connealy Countdown
17585522

ANGUSGS

DAR Princess Vel S816
19314357

#*Connealy Final Solution

Entarna of Conanga 140

HARB JH High Life 567

HARB Princess Vel A66 JH

#Connealy Answer 71

Este of Conanga 364

#Connealy Reward

Enta of Conanga 9802

#*VAR Reserve 1111

HARB Wendy 678 JH

*TC Forthright 9284

#*HARB Princess Vel 980 JH

CW
+55 20%
MARB
+1.10 95%
RE
+.63 40%
FAT
+.025 70%

CED	BW	WW	YW	SC	DOC	MILK	\$EN
+3 75%	+3.5 95%	+73 10%	+128 10%	+76 55%	+30 4%	+23 65%	-34 95%
\$M	\$W	\$B	\$C	ACT BW	RATIO	ADJ. WW	RATIO
+47 85%	+64 30%	+117 70%	+199 80%	70	103	609	106

A high growth Countdown son with added length. He's smooth in his shoulder and displays a great phenotype.



D A R Countdown 0163 - Lot 63

Dix Angus Ranch

66

D A R Countdown 0166

Birth Date: 03-01-2020

Bull 19949495

Tattoo: 0166

#Connealy Final Solution
#Connealy Countdown
17585522
Entarna of Conanga 140

ANGUSGS

#DAR Lady O478
18104193
Dar Lady L454

#Connealy Answer 71
Este of Conanga 364
#Connealy Reward
Enta of Conanga 9802

#*SydGen CC&7
#Erica of Ellston C124
Gardens Next Wave HE17
DAR JD Lady USBP F923 J190

CED	BW	WW	YW	SC	DOC	MILK	\$EN
+13 10%	+2 30%	+61 35%	+117 25%	+47 75%	+10 80%	+25 50%	-23 80%
\$M	\$W	\$B	\$C	ACT BW	RATIO	ADJ. WW	RATIO
+47 85%	+62 35%	+161 15%	+256 20%	78	96	702	112

This Countdown son turned in a 700# weaning weight to take his Pathfinder Dam to a record of 5@107 nursing ratio. A slick haired bull that is calving ease and fast growing.



D A R Countdown 0166 - Lot 66

69

D A R Complement 0239 [OSF]

Birth Date: 03-13-2020

Bull 19971098

Tattoo: 0239

#EF Complement 8088
#DAR Complement 0329
17995815
SMR Always Entense 8501

ANGUSGS

#DAR Rita O407
17995804
DAR Rita M732

#Basin Franchise P142
+EF Everelda Entense 6117
#Riverbend Mile High 3718
+LHR Always Entense 5516

#Sitz Upward 307R
CCA Blackcap 803
WK Midland 8373
Green Garden Rita K075

CED	BW	WW	YW	SC	DOC	MILK	\$EN
+11 15%	-1.1 10%	+38 95%	+72 95%	+56 65%	+18 50%	+21 80%	+11 4%
\$M	\$W	\$B	\$C	ACT BW	RATIO	ADJ. WW	RATIO
+52 70%	+40 90%	+94 95%	+174 95%	78	96	578	92

This son of Complement 0329 would be expected to make some superior females. His dam is a beautiful uddered Upstart daughter that is always easy to find at pasture with her superior phenotype.



D A R Complement 0239 - Lot 69

67

D A R Countdown 0161

Birth Date: 01-27-2020

Bull *19949489

Tattoo: 0161

#Connealy Final Solution
#Connealy Countdown
17585522
Entarna of Conanga 140

ANGUSGS

+*DAR Erica S870
19424500
Summitcrest Erica 105X

#Connealy Answer 71
Este of Conanga 364
#Connealy Reward
Enta of Conanga 9802

#*Basin Payweight 1682
#*Basin Payweight 006S
21AR O Lass 7017
#Salt Creek Bob 7003
#Summitcrest Erica 359P

CED	BW	WW	YW	SC	DOC	MILK	\$EN
+4 70%	+3.7 95%	+75 10%	+127 15%	+1.40 15%	+14 65%	+26 40%	-32 95%
\$M	\$W	\$B	\$C	ACT BW	RATIO	ADJ. WW	RATIO
+55 65%	+71 20%	+137 40%	+233 45%	70	103	552	96

Another Countdown bull that is calving ease with extra performance. He was produced by a perfect uddered Payweight daughter from the great Erica cow family.

68

D A R Countdown 0192

Birth Date: 02-02-2020

Bull Reg.No.Pdg.

Tattoo: 0192

#Connealy Final Solution
#Connealy Countdown
17585522
Entarna of Conanga 140

ANGUSGS

#DAR Princess Vel S802
19313935
HARB RCA Princess Vel 92

#*S Whitlock 179

#Connealy Answer 71
Este of Conanga 364
#Connealy Reward
Enta of Conanga 9802

#*S Chisum 6175
#S Pride Anna 709
#Nichols Extra K205
#HARB Princess Vel 21 RCA

CED	BW	WW	YW	SC	DOC	MILK	\$EN
+11 4%	+2 10%	+59 45%	+105 55%	+38 45%	+23 60%	+27 15%	-13 45%
\$M	\$W	\$B	\$C	ACT BW	RATIO	ADJ. WW	RATIO
+67 15%	+65 15%	+111 45%	+211 45%	58	87	603	105

A moderate framed stout made Countdown son. He will add muscle to his calves.

70

D A R Upstart 0191

Birth Date: 01-29-2020

Bull *19971852

Tattoo: 0191

#Sitz Upward 307R
#DAR Upstart 102
16984021
CCA Blackcap 803

ANGUSGS

#DAR Merica S804
19300854
HARB Merica Y79 JH

*HARB JH Overhaul 659

#*Connealy Onward
Sitz Henrietta Pride 81M
#*SAV Final Answer 0035
Blu Top Ella Blackcap M054

*LD Emblazon 999
#*HARB Princess Vel 980 JH
#*Kesslers Frontman R001
HARB Madeline Erica 189 JH

CED	BW	WW	YW	SC	DOC	MILK	\$EN
+14 4%	-1.3 10%	+59 45%	+100 55%	+85 45%	+16 60%	+31 15%	-12 45%
\$M	\$W	\$B	\$C	ACT BW	RATIO	ADJ. WW	RATIO
+75 15%	+75 15%	+133 45%	+248 30%	62	92	598	104

A calving ease Upstart son combined with the added performance sire on the maternal side, Overhaul. His granddam, Y79, was a deep bodied, power cow.

Dix Angus Ranch



LD Capitalist 316 - Sire of Lot 71 and 72

74

D A R Alpine 0158

Birth Date: 03-13-2020	Bull + *19960423	Tattoo: 0158
*Sitz Alpine 11076 18385837	##*KM Broken Bow 002 *Sitz Ellunas Elite 1874	##Summitcrest Complete 1P55 #Summitcrest Princess OP12 ##Mogck Bullseye Sitz Ellunas Elite 4011
ANGUSGS	*LD Emblazon 999	*OCC Emblazon 854E
*DAR Maxine P104 18244844	*DAR Ms Upgrade N834	*SH Forever Lady 3124 5118 ##*Styles Upgrade J59 *BJ Objective 8212
		CW +53 25%
		MARB +95 15%
		RE +44 70%
		FAT +012 55%

CED	BW	WW	YW	SC	DOC	MILK	\$EN
+15 2%	-9 15%	+74 10%	+143 3%	+40 75%	+25 20%	+28 30%	-33 95%
\$M	\$W	\$B	\$C	ACT BW	RATIO	ADJ. WW	RATIO
+68 25%	+80 10%	+158 15%	+273 10%	74	100	653	100

Another Alpine son that is a flush brother to Lot 73 with more growth. He will be a curve-bender as a sub-zero BW to YW in the top 3%.

75

D A R Alpine 0159

Birth Date: 03-13-2020	Bull + *19960426	Tattoo: 0159
*Sitz Alpine 11076 18385837	##*KM Broken Bow 002 *Sitz Ellunas Elite 1874	##Summitcrest Complete 1P55 #Summitcrest Princess OP12 ##Mogck Bullseye Sitz Ellunas Elite 4011
ANGUSGS	*Plattmeyer Weigh Up K360	*Sitz Upward 307R
*Deer Valley Blackcap 51291 18208025	*Rita 1194 of 2536 Rito 616	#Barbara of Plattmeyer 337 #Rito 616 of 4B20 6807 GAR Precision 2536
		CW +53 25%
		MARB +69 35%
		RE +57 50%
		FAT +013 55%

CED	BW	WW	YW	SC	DOC	MILK	\$EN
+11 15%	-4 20%	+71 15%	+128 10%	+66 60%	+26 15%	+30 20%	-26 85%
\$M	\$W	\$B	\$C	ACT BW	RATIO	ADJ. WW	RATIO
+67 30%	+82 5%	+144 30%	+254 25%	70	88	596	98

D A R Alpine 0159 is another sub-zero BW with double digit CED that will add growth potential to a set of calves. Sleep all night heifer bull.

76

D A R Alpine 0160

Birth Date: 03-02-2020	Bull + *19971026	Tattoo: 0160
*Sitz Alpine 11076 18385837	##*KM Broken Bow 002 *Sitz Ellunas Elite 1874	##Summitcrest Complete 1P55 #Summitcrest Princess OP12 ##Mogck Bullseye Sitz Ellunas Elite 4011
ANGUSGS	*Plattmeyer Weigh Up K360	*Sitz Upward 307R
*Deer Valley Blackcap 51291 18208025	*Rita 1194 of 2536 Rito 616	#Barbara of Plattmeyer 337 #Rito 616 of 4B20 6807 GAR Precision 2536
		CW +27 90%
		MARB +81 25%
		RE +67 35%
		FAT -021 15%

CED	BW	WW	YW	SC	DOC	MILK	\$EN
+14 4%	-8 15%	+59 45%	+97 60%	+86 45%	+14 65%	+18 95%	-4 25%
\$M	\$W	\$B	\$C	ACT BW	RATIO	ADJ. WW	RATIO
+69 25%	+60 40%	+124 60%	+230 45%	78	98	600	98

An Alpine son that is a flush brother to Lot 75. Heifer bull deluxe.



D A R Alpine 0157 - Lot 73

71

D A R 316 Capitalist 0189

Birth Date: 03-03-2020	Bull *19960446	Tattoo: 0189
*LD Capitalist 316 17666102	##Connealy Capitalist 028 LD Dixie Erica 2053	##SAV Final Answer 0035 Prides Pita of Conanga 8821 #CA Future Direction 5321 LD Dixie Erica Oar 0853
ANGUSGS	*HARB Hindquarter 473 JH	+HARB Stur-D 191 JH
*DAR Ever Entense Q601 18579473	*Spruce Mtn Ever Entense 1016	##HARB Princess Vel 980 JH #21AR Roundup 7005 *SMR Ever Entense 7675
		CW +60 15%
		MARB +03 95%
		RE +76 25%
		FAT -004 30%

CED	BW	WW	YW	SC	DOC	MILK	\$EN
+4 70%	+1.8 65%	+75 10%	+128 10%	+1.11 30%	+19 45%	+26 40%	-38 95%
\$M	\$W	\$B	\$C	ACT BW	RATIO	ADJ. WW	RATIO
+61 45%	+76 10%	+132 45%	+232 45%	78	98	683	109

A powerfully constructed Capitalist 316 son that is balanced from an EPD standpoint. Calving-ease to growth in a nice phenotype package. Dam has a nursing ratio of 3@104.

72

D A R 316 Capitalist 0190

Birth Date: 03-16-2020	Bull *19960444	Tattoo: 0190
*LD Capitalist 316 17666102	##Connealy Capitalist 028 LD Dixie Erica 2053	##SAV Final Answer 0035 Prides Pita of Conanga 8821 #CA Future Direction 5321 LD Dixie Erica Oar 0853
ANGUSGS	*Connealy Black Granite	##Connealy Consensus 7229
*DAR Rita Q632 18660762	*Hedgewood Rita 137	#Eura Elga of Conanga 9109 #Sitz Upward 307R +Hedgewood Rita 707
		CW +57 15%
		MARB +72 30%
		RE +48 65%
		FAT +029 75%

CED	BW	WW	YW	SC	DOC	MILK	\$EN
+13 10%	-5 15%	+67 20%	+112 30%	+23 85%	+16 60%	+33 10%	-10 40%
\$M	\$W	\$B	\$C	ACT BW	RATIO	ADJ. WW	RATIO
+64 35%	+87 2%	+152 20%	+261 20%	72	90	623	99

This 316 son was raised by a Black Granite daughter that has 3 calves to ratio 101 at weaning. A maternal brother Midnight was selected as the top selling Midnight son in the 2020 sale by Bar D Ranch.

73

D A R Alpine 0157

Birth Date: 03-09-2020	Bull + *19960421	Tattoo: 0157
*Sitz Alpine 11076 18385837	##*KM Broken Bow 002 *Sitz Ellunas Elite 1874	##Summitcrest Complete 1P55 #Summitcrest Princess OP12 ##Mogck Bullseye Sitz Ellunas Elite 4011
ANGUSGS	*LD Emblazon 999	*OCC Emblazon 854E
*DAR Maxine P104 18244844	*DAR Ms Upgrade N834	*SH Forever Lady 3124 5118 ##*Styles Upgrade J59 *BJ Objective 8212
		CW +47 40%
		MARB +1.03 10%
		RE +77 20%
		FAT +035 85%

CED	BW	WW	YW	SC	DOC	MILK	\$EN
+9 30%	-4 20%	+71 15%	+122 20%	+43 75%	+24 20%	+30 20%	-12 45%
\$M	\$W	\$B	\$C	ACT BW	RATIO	ADJ. WW	RATIO
+80 5%	+87 2%	+143 30%	+265 15%	72	100	610	100

A Sitz Alpine son from the P104 cow that is a sleep all night heifer bull that is one of the highest Marbling bulls in the offering. He will be a good cow maker.

Dix Angus Ranch

77

D A R Homestead 0181

Birth Date: 02-10-2020

Bull *19961810

Tattoo: 0181

*Ellingson Homestead 6030
18543019
EA Erica 1082

ANGUSGS

+*DAR Blackcap R700

18903273

#**Basin Payweight 1682

+*Deer Valley Blackcap 51291

#Connealy Thunder
CTS 7V03 Belleme Maid 9T02
#LT Territory 5824 of EA
SAV Alliance 2606

#**Basin Payweight 006S

21AR O Lass 7017

#*Plattmeyer Weigh Up K360

+*Rita 1194 of 2536 Rito 616

CW
+33 75%
MARB
+92 15%
RE
+32 85%
FAT
-001 35%

CED	BW	WW	YW	SC	DOC	MILK	\$EN
+12 10%	-1.0 10%	+63 30%	+116 25%	+81 50%	+17 55%	+20 85%	-9 40%
\$M	\$W	\$B	\$C	ACT BW	RATIO	ADJ. WW	RATIO
+69 25%	+64 30%	+136 40%	+245 30%	66	85	574	92

Here is a big EPD spread bull by Ellingson Homestead. This sire group was very well accepted in the sale a year ago. Heifer Bull.



D A R Woodston 0195 - Lot 80

80

D A R Woodston 0195

Birth Date: 01-31-2020

Bull *19971854

Tattoo: 0195

*DAR Woodston R104
18900691

ANGUSGS

DAR Princess Vel S823

19310569

#*Plattmeyer Weigh Up K360

+*DAR Rita M703

+*SAV 654X Rainmaster 6849

HARB Princess Vel D69 JH

#Sitz Upward 307R
#Barbara of Plattmeyer 337
#*Hoover Dam
ACF Rita 0005

#**Coleman Charlo 0256

*SAV Blackcap May 4136

*LD Emblazon 999

#*HARB Princess Vel W94 JH

CW
+34 75%
MARB
+70 35%
RE
+49 65%
FAT
+044 90%

CED	BW	WW	YW	SC	DOC	MILK	\$EN
+12 10%	-9 15%	+60 40%	+105 45%	+102 35%	+15 60%	+23 65%	-1 20%
\$M	\$W	\$B	\$C	ACT BW	RATIO	ADJ. WW	RATIO
+67 30%	+68 25%	+116 75%	+217 60%	54	82	572	99

A very cool profiling bull sired by D A R Woodston R104, who is working at McClaren Angus in Fowler, Ks. His dam, Princess Vel D69 is a full sister in blood to the \$60,000 HARB JH Overhaul.

78

D A R Woodston 0194

Birth Date: 01-27-2020

Bull *19971853

Tattoo: 0194

*DAR Woodston R104
18900691

ANGUSGS

*DAR Princess Vel S803

19310574

#*Plattmeyer Weigh Up K360

+*DAR Rita M703

+*SAV 654X Rainmaster 6849

#*HARB Princess Vel 980 JH

#Sitz Upward 307R
#Barbara of Plattmeyer 337
#*Hoover Dam
ACF Rita 0005

#**Coleman Charlo 0256

*SAV Blackcap May 4136

#*Connealy Onward

#HARB Princess Vel 36 JH

CW
+43 50%
MARB
+21 90%
RE
+72 30%
FAT
-040 3%

CED	BW	WW	YW	SC	DOC	MILK	\$EN
+10 20%	+2.0 70%	+69 15%	+119 20%	+55 70%	+10 80%	+29 25%	-15 55%
\$M	\$W	\$B	\$C	ACT BW	RATIO	ADJ. WW	RATIO
+72 20%	+78 10%	+114 75%	+220 60%	72	105	623	108

A nice designed Woodston son from a sister to the \$25,000 Herd Sire HARB Hindquarter 473 JH. His Rainmaster dam weaned him at 623 pounds as a heifer. Heifer bull

81

D A R Coal Train 0186

Birth Date: 03-16-2020

Bull 19942379

Tattoo: 0186

*Deer Valley Coal Train 41157
18030488

ANGUSGS

Molitor 999 Barbella098-4022

18052989

*Boyd Signature 1014

Long Erica 208

*LD Emblazon 999

Molitor 629 Barbella 733-098

#*Kesslers Frontman R001
#Boyd Erica Dianna 9054
#*SAV Final Answer 0035
Thomas Erica 4561

#*OCC Emblazon 854E

#*SH Forever Lady 3124 5118

HCC Nebraska 629

Molitor Barbella 5002-733

CW
+46 40%
MARB
+27 85%
RE
+85 15%
FAT
-008 25%

CED	BW	WW	YW	SC	DOC	MILK	\$EN
+2 85%	+2.0 70%	+82 2%	+142 3%	+189 3%	+25 20%	+18 95%	-32 95%
\$M	\$W	\$B	\$C	ACT BW	RATIO	ADJ. WW	RATIO
+54 65%	+73 15%	+118 70%	+207 75%	86	106	614	98

A Stout made Coal Train son that will push the scale with a +82 WW EPD. His dam by 999 has weaned 5 calves at a ratio of 100.

79

D A R Woodston 0196

Birth Date: 02-16-2020

Bull 19942512

Tattoo: 0196

*DAR Woodston R104
18900691

ANGUSGS

HARB Miss Erica E88 JH

19098409

#*Plattmeyer Weigh Up K360

+*DAR Rita M703

*LD Emblazon 999

HARB Miss Erica 671 JH

#Sitz Upward 307R
#Barbara of Plattmeyer 337
#*Hoover Dam
ACF Rita 0005

#*OCC Emblazon 854E

#*SH Forever Lady 3124 5118

#*Connealy Onward

HARB Miss Erica 480 JH

CW
+38 65%
MARB
+48 60%
RE
+47 65%
FAT
+0 35%

CED	BW	WW	YW	SC	DOC	MILK	\$EN
+16 1%	+1.3 50%	+59 45%	+105 45%	+1.00 40%	+7 90%	+25 50%	-18 65%
\$M	\$W	\$B	\$C	ACT BW	RATIO	ADJ. WW	RATIO
+37 95%	+61 40%	+123 60%	+197 80%	88	112	620	99

A big scaled D A R Woodston son from a Emblazon 999 cow that has weaned two calves to average 102 for a weaning ratio. Low birth weight heifer bull with double digit CED.

82

D A R Hindquarter 0175

Birth Date: 03-01-2020

Bull 19940899

Tattoo: 0175

*HARB Hindquarter 473 JH
18033745

ANGUSGS

HARB Wendy C65 JH

18377217

+HARB Stur-D 191 JH

#*HARB Princess Vel 980 JH

#*PA Power Tool 9108

HARB Wendy 987 JH

#*Leachman Right Time
#HARB Black Lady 073 JH
#*Connealy Onward
#HARB Princess Vel 36 JH

#*GAR Predestined

*Shamrocks Beebe Queen 3095

#*SAV Final Answer 0035

#HARB Wendy 273 JH

CW
I+46 40%
MARB
I+.59 45%
RE
I+.56 50%
FAT
I+.047 95%

CED	BW	WW	YW	SC	DOC	MILK	\$EN
+10 20%	+2.0 70%	+70 15%	+122 20%	I+.83 50%	I+.25 20%	+29 25%	-25 85%
\$M	\$W	\$B	\$C	ACT BW	RATIO	ADJ. WW	RATIO
+64 35%	+72 15%	+135 40%	+239 35%	88	107	663	104

A Hindquarter son with added performance. He was a pasture favorite throughout the summertime. His Power Tool dam has a superb udder.

Dix Angus Ranch

83

D A R Gunslinger 0223

Birth Date: 03-19-2020

Bull 19970829

Tattoo: 0223

*L/R Colt 45 3045
+*DAR Gunslinger R177
 18965558
 ANGUSGS
 HARB Princess Vel E59 JH
 19038219
 #S Whitlock 179
 #HARB Princess Vel B87 JH
 S/C Medicine Man 01Y7
 #Summitcrest Blizzard 0X62
 #*Summitcrest Complete 1P55
 Summitcrest Elba 0K96
 #*S Chisum 6175
 #S Pride Anna 709
 #HF Prowler 43U
 HARB Princess Vel Y95 JH

CED	BW	WW	YW	SC	DOC	MILK	\$EN
+5 60%	+9 45%	+66 25%	+125 15%	+1.41 15%	N/A N/A	+32 10%	-27 85%
\$M	\$W	\$B	\$C	ACT BW	RATIO	ADJ. WW	RATIO
+52 70%	+69 20%	+147 25%	+243 35%	84	106	704	110

The biggest statured Gunslinger son in the offering. Look for him to add pounds to the scale at weaning time.

84

D A R Gunslinger 0220 [OHF]

Birth Date: 03-13-2020

Bull *19942411

Tattoo: 0220

*L/R Colt 45 3045
+*DAR Gunslinger R177
 18965558
 ANGUSGS
 DAR Althea R758
 19084729
 Summitcrest Elba 1Y90
 HARB Horsepower 561 JH
 DAR Althea O446
 S/C Medicine Man 01Y7
 #Summitcrest Blizzard 0X62
 #*Summitcrest Complete 1P55
 Summitcrest Elba 0K96
 #*PA Power Tool 9108
 #HARB Frances 770 JH
 #*EXAR Upshot 0562B
 #DAR HD Althea 5210 HB98 J172

CED	BW	WW	YW	SC	DOC	MILK	\$EN
+8 35%	+1 25%	+74 10%	+147 2%	+1.33 20%	+31 3%	+22 75%	-24 80%
\$M	\$W	\$B	\$C	ACT BW	RATIO	ADJ. WW	RATIO
+61 45%	+72 15%	+165 10%	+275 10%	74	95	631	101

Zero BW to 147 yearling spread on this Gunslinger son. His Horsepower dam is a very balanced cow with a perfect udder.

86

D A R Hot Lotto 0145

Birth Date: 03-06-2020

Bull +*19969722

Tattoo: 0145

*Bastow Cash
+*BSF Hot Lotto 1401
 17919726
 ANGUSGS
 *DAR Ms Upgrade N834
 17590025
 #Sitz Dash 10277
 Bastow Queen W16
 *Silveiras El Capitan 6510
 BSF Princess TCF N2
 #*Styles Upgrade J59
 #Sitz Upward 307R
 Plainview Lassie 71B
 #*SS Objective T510 0T26
 +BJ Predestined 6082
 +BJ Objective 8212

CED	BW	WW	YW	SC	DOC	MILK	\$EN	
+4 70%	+8 40%	+66 25%	+109 35%	+14 90%	+18 50%	+25 50%	-24 80%	
\$M	\$W	\$B	\$C	ACT BW	RATIO	ADJ. WW	RATIO	
+35 95%	+70 20%	+121 65%	+192 85%	74	93	567	93	

This Hot Lotto son is moderate in his stature and thick from behind. 0145 is also a maternal brother to our cornerstone donor, P104 who produced that incredible flush of brothers selling as Lots 6-10.



DAR Ms Upgrade N834 - Dam of Lot 86

87

D A R Gunslinger 0215

Birth Date: 03-09-2020

Bull 19970832

Tattoo: 0215

*L/R Colt 45 3045
+*DAR Gunslinger R177
 18965558
 ANGUSGS
 HARB Jerica E74 JH
 19050546
 Summitcrest Elba 1Y90
 #HARB Hindquarter 473 JH
 +HARB Stur-D 191 JH
 #*HARB Princess Vel 980 JH
 #TC Aberdeen 759
 HARB Jerica 972 JH

CED	BW	WW	YW	SC	DOC	MILK	\$EN
+6 55%	+1.3 50%	+60 40%	+116 25%	+1.26 25%	+1.27 10%	+29 25%	-21 75%
\$M	\$W	\$B	\$C	ACT BW	RATIO	ADJ. WW	RATIO
+54 65%	+61 40%	+133 45%	+227 50%	82	104	601	94

0215 combines two of our own herd sires Gunslinger/Hindquarter. Moderate in his stature with a smooth shoulder and extra muscle.



DAR Gunslinger R177 - Sire of Lot 83 and 84

85

D A R Midnight 0255

Birth Date: 02-28-2020

Bull *19942528

Tattoo: 0255

#*Connealy Black Granite
+*DAR Midnight 6050
 18574077
 ANGUSGS
 *DAR Hal S845
 19347832
 #*Hedgewood Rita 301
 #*Basin Payweight 1682
 **DAR Ms Upshot N842
 #*Connealy Consensus 7229
 #Eura Elga of Conanga 9109
 #*Connealy Capitalist 028
 +Hedgewood Rita 521
 #*Basin Payweight 006S
 21AR O Lass 7017
 #*EXAR Upshot 0562B
 +*44 Ms New Design 8051

CED	BW	WW	YW	SC	DOC	MILK	\$EN
+10 20%	+1.0 45%	+84 2%	+151 1%	+45 75%	+23 25%	+23 65%	-27 85%
\$M	\$W	\$B	\$C	ACT BW	RATIO	ADJ. WW	RATIO
+75 15%	+86 3%	+152 20%	+272 10%	72	105	591	103

A Midnight son that has a moderate birthweight with tremendous growth potential. The Midnight Sire Group was 3rd overall in the efficiency at the Midland Bull Test last year.

88

D A R Midnight 0252

Birth Date: 02-23-2020

Bull *19942521

Tattoo: 0252

#*Connealy Black Granite
+*DAR Midnight 6050
 18574077
 ANGUSGS
 DAR Irene S876
 19412151
 #*Hedgewood Rita 301
 #*Basin Payweight 1682
 +DAR Irene N815
 #*Connealy Consensus 7229
 #Eura Elga of Conanga 9109
 #*Connealy Capitalist 028
 +Hedgewood Rita 521
 #*Basin Payweight 006S
 21AR O Lass 7017
 #*Connealy Confidence 0100
 #Molitor 2720 Irene 9025-1047

CED	BW	WW	YW	SC	DOC	MILK	\$EN
+10 20%	-6 15%	+72 10%	+126 15%	+52 70%	+31 3%	+31 15%	-24 80%
\$M	\$W	\$B	\$C	ACT BW	RATIO	ADJ. WW	RATIO
+74 15%	+86 3%	+129 50%	+241 35%	72	105	588	102

A Midnight son that is a sleep all night heifer bull with added performance potential, out of a perfect uddered Payweight daughter.

Dix Angus Ranch

89

D A R Contribution 0246

Birth Date: 04-01-2020

Bull *19942433

Tattoo: 0246

Sitz Investment 648B
17758536

#*Sitz Investment 660Z
Sitz Barabamere Nell 18U

#*Connealy Final Product
#*Sitz Ellunas Elite 656T
#*Rito 112 of 2536 Rito 616
Sitz Barabamere Nell 1280

ANGUSGS

DAR Velda Q638
18564100

#*KG Solution 0018
#DAR JD Velda IF21

#MOGCK Sure Shot
KG Rito Lady 8724
JDI New Design 208-5902
Bairds Velda Q22

CW
+53 25%
MARB
+36 75%
RE
+44 70%
FAT
-011 25%

CED	BW	WW	YW	SC	DOC	MILK	\$EN
+11 15%	-1.7 5%	+72 10%	+134 10%	+1.29 20%	+12 75%	+34 5%	-39 95%
\$M	\$W	\$B	\$C	ACT BW	RATIO	ADJ. WW	RATIO
+66 30%	+85 3%	+131 50%	+236 40%	78	98	667	106

A double digit CED Investment son that will be a high growth sleep all night heifer bull with a -1.7 BW EPD from the Velda cow family.



DAR JD Velda IF21 - Maternal Grandam of Lot 89

92

D A R Gunslinger 0218 [DDF-MIF-OHF]

Birth Date: 03-09-2020

Bull *19942410

Tattoo: 0218

*DAR Gunslinger R177
18965558

*L/R Colt 45 3045
Summitcrest Elba 1Y90

S/C Medicine Man 01Y7
#Summitcrest Blizzard OX62
#*Summitcrest Complete 1P55
Summitcrest Elba OK96

ANGUSGS

DAR Althea R772
19084728

*Deer Valley Coal Train 41157
DAR Althea O445

*Boyd Signature 1014
Long Erica 208
#*EF Complement 8088
DAR HD Althea HB98

CW
+54 20%
MARB
+31 80%
RE
+66 35%
FAT
+073 95%

CED	BW	WW	YW	SC	DOC	MILK	\$EN
+5 60%	+2 30%	+65 25%	+125 15%	+1.96 3%	+19 45%	+36 3%	-34 95%
\$M	\$W	\$B	\$C	ACT BW	RATIO	ADJ. WW	RATIO
+41 95%	+77 10%	+122 65%	+199 80%	82	105	580	93

Another low birthweight Gunslinger son. His Coal Train dam is a very deep bodied, perfect uddered cow.

93

D A R Gunslinger 0217

Birth Date: 03-09-2020

Bull 19970835

Tattoo: 0217

*DAR Gunslinger R177
18965558

*L/R Colt 45 3045
Summitcrest Elba 1Y90

S/C Medicine Man 01Y7
#Summitcrest Blizzard OX62
#*Summitcrest Complete 1P55
Summitcrest Elba OK96

ANGUSGS

HARB Princess Vel E82 JH
19050549

Lemar Universe 28P
#*HARB Princess Vel W94 JH

#*Papa Universe 515
Lemar Elba 2D
#*Connealy Onward
#HARB Princess Vel 36 JH

CW
I+39 60%
MARB
I+46 60%
RE
I+47 65%
FAT
I+020 65%

CED	BW	WW	YW	SC	DOC	MILK	\$EN
+8 35%	+0 25%	+51 70%	+100 55%	N/A N/A	N/A N/A	+28 30%	-18 65%
\$M	\$W	\$B	\$C	ACT BW	RATIO	ADJ. WW	RATIO
+50 75%	+52 65%	+126 55%	+213 65%	76	96	566	89

A moderate framed Gunslinger son that has a nice look. He is an outcross bull with his dam being sired by Universe 28.

90

D A R Reno 0105

Birth Date: 03-04-2020

Bull +*19961781

Tattoo: 0105

*Spring Cove Reno 4021
17926446

#*KM Broken Bow 002
*Spring Cove Liza Q21

#*Summitcrest Complete 1P55
#Summitcrest Princess OP12
#*CCA Emblazon 702
Spring Cove Liza 721

ANGUSGS

*Deer Valley Blackcap 51291
18208025

#*Plattmeyer Weigh Up K360
+*Rita 1194 of 2536 Rito 616

#Sitz Upward 307R
#Barbara of Plattmeyer 337
#Rito 616 of 4820 6807
GAR Precision 2536

CW
+46 40%
MARB
+83 20%
RE
+66 35%
FAT
-043 3%

CED	BW	WW	YW	SC	DOC	MILK	\$EN
+8 35%	-3 20%	+72 10%	+123 15%	+39 75%	+19 45%	+28 30%	-21 75%
\$M	\$W	\$B	\$C	ACT BW	RATIO	ADJ. WW	RATIO
+67 30%	+83 4%	+143 30%	+252 25%	N/A	N/A	546	89

A Reno son from the great 51291 Donor cow that we bought from Deer Valley in 2015. Heifer Bull

91

D A R Gunslinger 0221

Birth Date: 03-13-2020

Bull 19942412

Tattoo: 0221

*DAR Gunslinger R177
18965558

*L/R Colt 45 3045
Summitcrest Elba 1Y90

S/C Medicine Man 01Y7
#Summitcrest Blizzard OX62
#*Summitcrest Complete 1P55
Summitcrest Elba OK96

ANGUSGS

DAR Irene R751
18919044

#*KG Solution 0018
+DAR Irene O423

#MOGCK Sure Shot
KG Rito Lady 8724
#Tokach Update 9009
#Molitor 2720 Irene 9025-1047

CW
+37 65%
MARB
+40 70%
RE
+47 65%
FAT
+040 85%

CED	BW	WW	YW	SC	DOC	MILK	\$EN
+9 30%	-8 15%	+59 45%	+119 20%	+1.46 15%	+28 10%	+27 35%	-24 80%
\$M	\$W	\$B	\$C	ACT BW	RATIO	ADJ. WW	RATIO
+46 85%	+62 35%	+110 80%	+189 90%	70	90	586	93

A light birthweight Gunslinger with top 20% at yearling weight from a KG Solution daughter.

94

D A R Hindquarter 0173

Birth Date: 02-17-2020

Bull 19942600

Tattoo: 0173

*HARB Hindquarter 473 JH
18033745

+HARB Stur-D 191 JH
#*HARB Princess Vel 980 JH

#*Leachman Right Time
#HARB Black Lady 073 JH
#*Connealy Onward
#HARB Princess Vel 36 JH

ANGUSGS

DAR Lady R773
19084731

Sitz Investment 648B
#DAR Lady O478

#*Sitz Investment 660Z
Sitz Barabamere Nell 18U
#*Hoover Dam
Dar Lady L454

CW
+57 15%
MARB
+35 75%
RE
+71 30%
FAT
-003 30%

CED	BW	WW	YW	SC	DOC	MILK	\$EN
+5 60%	+2.5 80%	+83 2%	+144 3%	+0.4 90%	+25 20%	+30 20%	-29 90%
\$M	\$W	\$B	\$C	ACT BW	RATIO	ADJ. WW	RATIO
+89 1%	+89 2%	+133 45%	+262 15%	90	115	640	102

High Growth Hindquarter son that will be tremendous cow maker potential.

Dix Angus Ranch

95

D A R Roughrider 0119

Birth Date: 03-14-2020

Bull +*19973470

Tattoo: 0119

*Ellingson Roughrider 4202
17933463
*EA Blackclass 8914

ANGUSGS

*Connealy Onward
+HARB Jerica 876 JH
16574632
+HARB Juanada Erica 280 JH

#*Connealy Earnan 076E
#*Connealy Consensus
+*Brazila of Conanga 3991 839A
LT Curve Bender 4810 of EA
+SAV Blackclass 374

#Connealy Lead On
Altune of Conanga 6104
#Sitz Alliance 6595
Juanada Erica 9024 HARB

CW
+40 60%
MARB
+61 45%
RE
+44 70%
FAT
+031 80%

CED	BW	WW	YW	SC	DOC	MILK	\$EN
+3 75%	+1.7 60%	+49 75%	+93 65%	+1.57 10%	+23 25%	+35 4%	-4 25%
\$M	\$W	\$B	\$C	ACT BW	RATIO	ADJ. WW	RATIO
+77 10%	+62 35%	+132 45%	+248 30%	78	98	603	99

His dam, Jerica 876, produced a son to sell for \$36,000 in the 2016 Midland Bull Test, HARB Playboy 581 JH.



Ellingson Roughrider 4202 - Sire of Lot 95-98

98

D A R Roughrider 0117

Birth Date: 03-05-2020

Bull +*19973466

Tattoo: 0117

*Ellingson Roughrider 4202
17933463
*EA Blackclass 8914

ANGUSGS

*Connealy Onward
+HARB Jerica 876 JH
16574632
+HARB Juanada Erica 280 JH

#*Connealy Earnan 076E
#*Connealy Consensus
+*Brazila of Conanga 3991 839A
LT Curve Bender 4810 of EA
+SAV Blackclass 374

#Connealy Lead On
Altune of Conanga 6104
#Sitz Alliance 6595
Juanada Erica 9024 HARB

CW
+37 65%
MARB
+52 55%
RE
+57 50%
FAT
+026 70%

CED	BW	WW	YW	SC	DOC	MILK	\$EN
+2 85%	+2.0 70%	+49 75%	+99 55%	+22 85%	+10 80%	+26 40%	-12 45%
\$M	\$W	\$B	\$C	ACT BW	RATIO	ADJ. WW	RATIO
+54 65%	+47 75%	+128 55%	+220 60%	70	100	592	100

His dam, Jerica 876, produced a son to sell for \$36,000 in the 2016 Midland Bull Test, HARB Playboy 581 JH.

99

D A R Bankroll 0150

Birth Date: 02-17-2020

Bull 19960409

Tattoo: 0150

*Barstow Bankroll B73
18036327
Barstow Miss Dianna Z25

ANGUSGS

*Raven Powerball 53
DAR Irene R752
18996141
DAR Irene P167

#*Sitz Dash 10277
Barstow Queen W16
#CAR Efficient 534
#Barstow Miss Dianna X128

#*PA Power Tool 9108
+*Raven Emma E 4241
#*Summitcrest Focus 2U66
+DAR Irene N801

CW
+50 30%
MARB
+77 25%
RE
+47 65%
FAT
+018 60%

CED	BW	WW	YW	SC	DOC	MILK	\$EN
+9 30%	-8 15%	+68 20%	+123 15%	+1.80 5%	+25 20%	+25 50%	-28 90%
\$M	\$W	\$B	\$C	ACT BW	RATIO	ADJ. WW	RATIO
+68 25%	+72 15%	+145 30%	+256 20%	70	90	606	97

A negative birthweight bull by Bankroll with added growth. Good Bull.

96

D A R Roughrider 0120

Birth Date: 03-15-2020

Bull +*19973473

Tattoo: 0120

*Ellingson Roughrider 4202
17933463
*EA Blackclass 8914

ANGUSGS

*Connealy Onward
+HARB Jerica 876 JH
16574632
+HARB Juanada Erica 280 JH

#*Connealy Earnan 076E
#*Connealy Consensus
+*Brazila of Conanga 3991 839A
LT Curve Bender 4810 of EA
+SAV Blackclass 374

#Connealy Lead On
Altune of Conanga 6104
#Sitz Alliance 6595
Juanada Erica 9024 HARB

CW
+36 70%
MARB
+56 50%
RE
+42 75%
FAT
+035 85%

CED	BW	WW	YW	SC	DOC	MILK	\$EN
+2 85%	+1.8 65%	+47 80%	+92 70%	+1.06 35%	+17 55%	+37 2%	-12 45%
\$M	\$W	\$B	\$C	ACT BW	RATIO	ADJ. WW	RATIO
+65 35%	+59 45%	+123 60%	+225 55%	82	103	633	104

His dam, Jerica 876, produced a son to sell for \$36,000 in the 2016 Midland Bull Test, HARB Playboy 581 JH.

97

D A R Roughrider 0118

Birth Date: 03-13-2020

Bull +*19973469

Tattoo: 0118

*Ellingson Roughrider 4202
17933463
*EA Blackclass 8914

ANGUSGS

*Connealy Onward
+HARB Jerica 876 JH
16574632
+HARB Juanada Erica 280 JH

#*Connealy Earnan 076E
#*Connealy Consensus
+*Brazila of Conanga 3991 839A
LT Curve Bender 4810 of EA
+SAV Blackclass 374

#Connealy Lead On
Altune of Conanga 6104
#Sitz Alliance 6595
Juanada Erica 9024 HARB

CW
+31 80%
MARB
+34 75%
RE
+30 90%
FAT
+049 95%

CED	BW	WW	YW	SC	DOC	MILK	\$EN
+3 75%	+1.7 60%	+49 75%	+90 70%	+1.24 25%	+30 4%	+30 20%	-13 50%
\$M	\$W	\$B	\$C	ACT BW	RATIO	ADJ. WW	RATIO
+68 25%	+54 60%	+102 90%	+200 80%	80	100	609	100

His dam, Jerica 876, produced a son to sell for \$36,000 in the 2016 Midland Bull Test, HARB Playboy 581 JH.



Cody & Robert following the 2020 Bull Sale

Dix Angus Ranch

100

D A R Bankroll 0153

Birth Date: 03-03-2020

Bull 19960419

Tattoo: 0153

#*Barstow Cash

#*Sitz Dash 10277

***Barstow Bankroll B73**

Barstow Queen W16

18036327

Barstow Miss Dianna Z25

#CAR Efficient 534

#Barstow Miss Dianna X128

ANGUSGS

#*PA Power Tool 9108

#*GAR Predestined

HARB Merica C69 JH

*Shamrocks Beebee Queen 3095

18377219

HARB Madeline Erica 675 JH

*Tehama Gridmaker L234

HARB Madeline Erica 277 JH

CW
+42 50%
MARB
+70 35%
RE
+56 50%
FAT
+021 65%

CED	BW	WW	YW	SC	DOC	MILK	\$EN
+9 30%	+3 30%	+58 45%	+111 35%	+1.62 10%	+22 30%	+27 35%	-15 55%
\$M	\$W	\$B	\$C	ACT BW	RATIO	ADJ. WW	RATIO
+52 70%	+63 35%	+136 40%	+228 50%	88	109	579	92

Bankroll son that will work good on heifers. Solid Growth.



Barstow Bankroll B73 - Sire of Lot 100.

101

D A R S903 Horsepower 0134

Birth Date: 02-05-2020

Bull Reg.No.Pdg.

Tattoo: 0134

DAR Horsepower S903

19232082

HARB Horsepower 561 JH

DAR Irene P150

ANGUSGS

#*KCF Bennett Fortress

DAR Maxine S864

19412196

+*BJ 12E7 Rito 5258

#*PA Power Tool 9108

#HARB Frances 770 JH

#*EF Complement 8088

DAR Irene N860

#*Connealy Consensus

*Thomas Patricia 9705

+*Rito 12E7 of 5F56 Rito 5M2

+*BJ Complete 1268

CW	CW
+43	+40
MARB	MARB
+75	+82
RE	RE
+17	+74
FAT	FAT
+070	+013

CED	BW	WW	YW	SC	DOC	MILK	\$EN
+12	-1.7	+63	+116	+77	+24	+34	-10
+5	+1.6	+60	+109	+51	+2	+27	-13
\$M	\$W	\$B	\$C	ACT BW	RATIO	ADJ. WW	RATIO
+74	+83	+120	+230	66	96	572	99
+50	+66	+149	+243				

Horsepower S903 son that will add maternal value to a cowherd.

102

D A R Hindquarter 0174

Birth Date: 02-28-2020

Bull 19942604

Tattoo: 0174

***HARB Hindquarter 473 JH**

18033745

+HARB Stur-D 191 JH

#*HARB Princess Vel 980 JH

ANGUSGS

Sitz Investment 648B

DAR Rita Q687

18582728

DAR Rita O485

#*Leachman Right Time

#HARB Black Lady 073 JH

#*Connealy Onward

#HARB Princess Vel 36 JH

#*Sitz Investment 660Z

Sitz Barbaramere Nell 18U

#*Hoover Dam

Dar Rita L430

CW
+49 35%
MARB
+36 75%
RE
+45 70%
FAT
+033 80%

CED	BW	WW	YW	SC	DOC	MILK	\$EN
+9 30%	+1.0 45%	+61 35%	+100 55%	+30 80%	+20 40%	+25 50%	-11 45%
\$M	\$W	\$B	\$C	ACT BW	RATIO	ADJ. WW	RATIO
+66 30%	+67 25%	+117 70%	+218 60%	82	102	671	107

Hindquarter son that is well balanced from a nice Investment daughter.

Dix Angus Ranch



D A R Maxine 0056 - Lot 103

103

D A R Maxine 0056

Birth Date: 02-17-2020

Cow *19960475

Tattoo: 0056

*MOGCK Entice
18952921

ANGUSGS

+*DAR Maxine R705
18901319

SydGen Enhance
#*MOGCK Erica 2255

#*SAV Resource 1441

*DAR Maxine P104

*SydGen Exceed 3223
SydGen Rita 2618
Mogck Sure Shot 253
MOGCK Erica 2162

+Rito 707 of Ideal 3407 7075
*SAV Blackcap May 4136
*LD Emblazon 999
*DAR Ms Upgrade N834

CED	BW	WW	YW	SC	DOC	MILK	\$EN
+0	95%	+3.7	95%	+87	1%	+152	1%
\$M	\$W	\$B	\$C	ACT BW	RATIO	ADJ. WW	RATIO
+65	35%	+82	4%	+166	10%	+280	10%
86	113	650	114				

A very special female sired by MOGCK Entice. Her dam is a flush sister to our Herd Sire, D A R Turbo R146, who has sired the top selling bull in the history of our program, D A R Propel T085. She's a very attractive fronted female that is deep bodied and offers outstanding potential to make a great cow. She adds in carcass merit and breeding leading growth numbers.



D A R Lucy 0011 - Lot 104

104

D A R Lucy 0011

Birth Date: 02-16-2020

Cow *19960463

Tattoo: 0011

*Woodhill Blueprint
18876777

ANGUSGS

+*DAR Lucy R761
19029886

*Connealy Confidence Plus
#*Woodhill Evergreen Z291-B233

#*Raven Powerball 53

*Riverbend Lucy 426

#*Connealy Confidence 0100
Elbanna of Conanga 1209
*Tehama Sierra Cut Z118
+*Woodhill Evergreen U6-Z291

+*PA Power Tool 9108
+*Raven Emma E 4241
+*Riverbend Peerless 0016
+*Riverbend Lucy Z1165

CED	BW	WW	YW	SC	DOC	MILK	\$EN
+13	5%	-2.1	3%	+69	15%	+122	15%
\$M	\$W	\$B	\$C	ACT BW	RATIO	ADJ. WW	RATIO
+65	35%	+91	1%	+158	15%	+270	15%
64	85	611	108				

This Blueprint daughter is very correctly put together when viewed from any angle. Her dam by Raven Powerball is on her way to being a Pathfinder and in the donor pen with her first two calves recording a nursing ratio of 117. A beautifully designed female that has all the EPDs to make her a great asset to any breeder.

105

D A R Maxine 0042

Birth Date: 02-27-2020

Cow +*19961793

Tattoo: 0042

*BUBS Southern
17853196

ANGUSGS

*DAR Maxine P104
18244844

*Silveiras Conversion 8064
Charm AA31
*Hickory Hill Erica 009

*LD Emblazon 999

*DAR Ms Upgrade N834

#*BT Crossover 758N
+EXG Saras Dream S609 R3
#*Connealy Stimulus 8419
Hickory Hill Erica TA32

#*OCC Emblazon 854E
#*SH Forever Lady 3124 5118
#*Styles Upgrade J59
+BJ Objective 8212

CW	MARB	RE	FAT
+35	70%	+74	35%
+99	10%	-001	40%

CED	BW	WW	YW	SC	DOC	MILK	\$EN
+10	20%	+3	30%	+59	40%	+98	55%
\$M	\$W	\$B	\$C	ACT BW	RATIO	ADJ. WW	RATIO
+73	15%	+74	10%	+138	40%	+252	25%
70	93	572	100				

Maxine 0042 is a maternal sister to D A R Turbo R146, who sired the top selling bull in the history of the program. She is a flushmate to the bulls in this offering which sell as Lots 6, 7, 8, 9, 10. A very powerfully constructed female that will be a nice breeding piece many years down the road.



D A R Maxine 0042 - Lot 105

106

D A R Maxine 0019

Birth Date: 03-13-2020

Cow +*19960425

Tattoo: 0019

*Sitz Alpine 11076
18385837

ANGUSGS

*DAR Maxine P104
18244844

#*KM Broken Bow 002
#*Sitz Ellunas Elite 1874

*LD Emblazon 999

*DAR Ms Upgrade N834

#*Summitcrest Complete 1P55
#Summitcrest Princess 0P12
#*Mogck Bullseye
Sitz Ellunas Elite 4011

#*OCC Emblazon 854E
#*SH Forever Lady 3124 5118
#*Styles Upgrade J59
+BJ Objective 8212

CW	MARB	RE	FAT
+35	70%	+72	40%
+81	20%	+034	85%

CED	BW	WW	YW	SC	DOC	MILK	\$EN
+11	15%	-2	20%	+61	35%	+107	35%
\$M	\$W	\$B	\$C	ACT BW	RATIO	ADJ. WW	RATIO
+88	1%	+68	20%	+127	55%	+253	25%
72	96	562	99				

Maxine 0019 is a fancy daughter of our cornerstone donor, P104. She is very angular in her front end with great depth and rib shape. Daughters from the Maxine cow family have turned into outstanding females for us.



Sitz Alpine 11076 - Sire of Lots 106, 107 & 112

Commercial Heifers

These heifers are 100% home raised. They have all been OCV'd and had all their pre-breeding vaccinations. These are the top end of our commercial heifers as we did not retain any commercial replacements for ourselves. These are a great opportunity to bring good maternal genetics into your herd.

"These will sell in 5 Head groups, and the winning bidder will have the option to buy all the heifers of their desire in 5 head increments"

1-5 _____	16-20 _____	31-35 _____
6-10 _____	21-25 _____	36-40 _____
11-15 _____	26-30 _____	

HARB Hindquarter 473 JH



HARB Hindquarter 473 JH [AMF-CAF-DZF-DDF-MTF-NHF-OHF-OSF-RDF]

Birth Date: 02-14-2014

Bull #18033745

Tattoo: 473



HARB Stur-D 191 JH

(\$50,000 2012 Midland Bull Test high seller)



HARB Princess Vel 980 JH

CED	BW	WW	YW	YH	SC	DOC	HP	CEM	MILK	MWT	MHT	\$W	\$B	CW	MARB	RE	FAT
+15	+.8	+73	+123	+.9	+.51	+30	+12.5	+9	+27	+80	+.9	+78	+121	+44	+.45	+.55	+.046

#+Leachman Right Time
+HARB Stur-D 191 JH
17138110
 #HARB Black Lady 073 JH

#*Connealy Onward
#+HARB Princess Vel 980 JH
16548463
 #HARB Princess Vel 36 JH

#*N Bar Emulation EXT
 Leachman Erica 0025
 #HARB Cincha 829
 HARB Black Lady G67 JH

#Connealy Lead On
 Altune of Conanga 6104
 #HARB Cincha 829
 HARB RCA Princess Vel 03

- Hindquarter was our selection from the 2015 Midland Bull Test as the 5th high selling bull.
- His outcross pedigree allows for limitless mating options.
- The daughters in production average a nursing ratio of 103.
- His progeny are standouts posting BR@99, WR@103, and YR@103.
- He's thick and stout with great foot design and heel depth. He's back with maternal excellence with a pedigree stacked with Pathfinders!
- Owned with Harrison Angus Ranch, Boyd, MT.

Dix Angus Ranch Donors

HARB Princess Vel Z88 JH



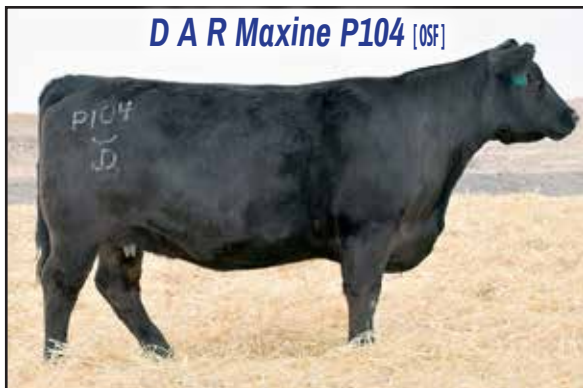
CED	BW	WW	YW	MILK	\$M	\$W	\$B	\$C
+12	+1.5	+73	+126	+28	+76	+78	+141	+259

D A R Velda M724



CED	BW	WW	YW	MILK	\$M	\$W	\$B	\$C
+10	-.3	+62	+109	+34	+65	+78	+120	+221

D A R Maxine P104 [OSF]



CED	BW	WW	YW	MILK	\$M	\$W	\$B	\$C
+10	+6	+71	+129	+24	+51	+72	+138	+230

HARB Black Lady 688 JH



CED	BW	WW	YW	MILK	\$M	\$W	\$B	\$C
+12	+2.1	+63	+107	+31	+69	+71	+117	+221

HARB Princess Vel 980 JH



CED	BW	WW	YW	MILK	\$M	\$W	\$B	\$C
+12	+2.4	+78	+133	+36	+80	+87	+153	+278

DAR JD Velda IF21 [CAF]



CED	BW	WW	YW	MILK	\$M	\$W	\$B	\$C
+7	+.7	+61	+107	+34	+52	+73	+122	+210

Deer Valley Blackcap 51291 [OSF]



CED	BW	WW	YW	MILK	\$M	\$W	\$B	\$C
+11	+2	+60	+102	+20	+41	+59	+133	+214

D A R Ms Upstart N832 [DDF]



CED	BW	WW	YW	MILK	\$M	\$W	\$B	\$C
+12	-1.7	+66	+106	+29	+83	+87	+120	+239

his sale is dedicated to the memory of



Robert Dix

August 27, 1929 – November 26, 2020

Close the Gate

*For this one farmer the worries are over, lie
down and rest your head,
Your time has been and struggles enough,
put the tractor in the shed.*

*Years were not easy, many downright hard,
but your faith in God transcended,
Put away your tools and sleep in peace.
The fences have all been mended.*

*You raised a fine family, worked the land
well and always followed the Son,
Hang up your shovel inside of the barn;
your work here on earth is done.*

*A faith few possess led your journey
through life, often a jagged and stony way,
The sun is setting, the cattle are all bedded,
and here now is the end of your day.*

*Your love of God's soil has passed on to
your kin; the stories flow like fine wine,
Wash off your work boots in the puddle left
by blessed rain one final time.*

*You always believed that the good Lord
would provide and He always had
somehow,
Take off your gloves and put them down,
no more sweat and worry for you now.*

*Your labor is done, your home now is
heaven; no more must you wait,
Your legacy lives on, your love of the land,
and we will close the gate.*

~ Nancy Kraayenhof

Custom **FORAGE HARVESTING**



Jeff Dix

STOCKTON, KANSAS
785-476-5030
DIXANGUS.COM



Cody Dix
2595 C Road
Stockton, KS 67669

PRSR
FIRST CLASS
U.S. POSTAGE
PAID
St. Joseph, MO
Permit #2017



Thanks for your interest in our program!