



Profitable Performance in a Maternal Package

5TH ANNUAL

PRODUCTION SALE
MARCH 13, 2023

HEARTLAND REGIONAL STOCKYARDS | PLAINVILLE, KANSAS • 1 PM



Dix Angus Ranch

2595 C Road
Stockton, KS 67669
(785) 476-5168
dixangus@gmail.com
www.dixangus.com

Greetings Friends and Fellow Cattlemen:

It's hard to believe we are already on sale number five! It seems like yesterday that we were scrambling around trying to figure out how to put our first one together. Although the workload never seems to lessen, the process seems to get a little bit easier from year to year.

We are excited to present this offering of bulls and females to all of you at our 5th Annual Production Sale at Heartland Regional Stockyards in Plainville, Kansas on Monday, March 13, 2023. We feel that this is not only the most consistent set of bulls that we've had the opportunity to offer, but they also show the most genetic improvement from one year to the next that we have offered thus far. In addition to the bulls, we have a very attractive set of registered females that we feel can go make a positive impact at their next home. The 50 head of ranch-raised replacement heifers will also be the best set we have ever offered.

All of the bulls and registered females in this offering have been carcass ultrasound and genomic tested. The ultrasound data will be available on our website prior to the sale as well as sale day.

Presale videos will be available online at DVAuction.com by March 1st.

To summarize our expectations of our cowherd, I believe the diagram on Pages 4 & 5 state it best. First and foremost, LONGEVITY is the hub of success in our herd as well as the commercial cow/calf industry. They must be fertile! They have to reproduce to stay around and they have to reproduce to implement genetic improvement. Next, the mother must have the "know how" and ability to nurse a quality calf, because we do not have the time to help each of them as individuals. We believe that these females need to be able to calve on their own and have the structural soundness to travel with the herd to raise her calf. After that each producer seems to set a different set of parameters/goals when it comes to performance and the feedstuffs available to help achieve those goals listed from the bottom and left side of the diagram. But, the longer we are able to keep each cow in the herd, meeting our expectations, the more profitable we are bound to be.

It would be our pleasure to assist you in finding your next herd bull(s) in this offering, as well as stand behind them with a 1st breeding season guarantee in the event of an injury should occur.

Cattle will be available for viewing any time at the ranch prior to the sale. They will all be transported to Heartland Regional Stockyards on Saturday, March 11 and able to be evaluated that afternoon and all day Sunday in addition to Sale day.

This will be a live auction with each lot making their way through the sale ring individually.

Let us know if you have any questions about our program or the cattle in this offering.

Cody & Jeff



HALEY, MARIANNE, JEFF, CODY, BROOK, CHLOE

WELCOME



5TH ANNUAL

PRODUCTION SALE MARCH 13, 2023

HEARTLAND REGIONAL STOCKYARDS | PLAINVILLE, KANSAS • 1 PM

Selling: 100 Yearling Bulls, 12 Elite Registered Heifers, 50 Ranch-raised Commercial open replacement heifers
Call Cody (785) 476-5168

SALE LOCATION:

Heartland Regional Stockyards
907 NW 3rd STREET
PLAINVILLE, KS 67663

LUNCH:

Complimentary lunch at 11 A.M.

AUCTIONEER:

Greg Goggins (406) 200-1880

LIVESTOCK PUBLICATION REPRESENTATIVES:

Jeff Mafi- Angus Journal (816) 344-4266
Doug Paul – The Stock Exchange (405) 820-3982
Alan Sears – Western Ag Reporter (970) 396-7521
Stephen Russell – Kansas Stockman (785) 458-2650

SALE DAY PHONES:

Cody Dix: (785) 476-5168
Jeff Dix: (785) 476-5030 or (785) 476-5210

CATTLE VIEWING:

Cattle can be viewed at anytime at the ranch until Saturday prior to the sale. They will be shipped the Heartland Regional Stockyards in Plainville and will be available for viewing, Sunday March 13 and on sale day. Videos of the bulls will be available online at DVAuction.com or dixangus.com

SALE ORDER:

BULLS WILL SELL IN CATALOG ORDER! With the exception we feel there is additional interest in a particular lot or lots to be moved forward in the order.

Commercial Heifers will sell in Groups of 5 Head, Winning Bidder has the option to take as many as desired in increments of 5 Head.

ANGUS MEDIA EPDs contained in the hard copy of this sale book were current as of print date. Digital versions of this sale book can be viewed online at www.angus.org and will have EPDs updated every Friday with the exception of EPD references in footnotes and photos. Any PDF downloads from the website will contain EPDs current as of the date downloaded. References: American Angus Association®, AHIR®, AngusLinkSM, CAB®, Pathfinder®.



Find us on
Facebook

facebook.com/Dix-Angus-Ranch

TERMS OF SALE:

Terms are cash. Cattle will sell under the suggested Terms and Conditions of the American Angus Association. All cattle must be paid for in full on sale day. Any announcements from the sale block take precedence over any printed material.

HEALTH:

Interstate health papers will be furnished with every animal selling. A rigid herd health program is followed. All bulls ear-notch and tested negative for PI-BVD and vaccinated against foot rot at time of fertility check.

DELIVERY: Free Delivery on all bulls selling for \$3,000 or more in Kansas and bordering states, outside these parameters will be at cost.

VOLUME DISCOUNT: The purchase of 5 or more bulls by a single buyer will earn a 5% discount.

GENOMICS: All the bulls have been genomically tested with AngusGS as EPDs have been adjusted accordingly. They will all have guaranteed parentage for the sire at minimum.

CARCASS ULTRASOUND: All the registered cattle selling in this offering have been ultrasounded and will have the results posted online as well as the data being available on sale day.

RETAINED INTEREST:

Dix Angus Ranch is retaining 1/3 revenue sharing interest in every bull

DVAuction
Broadcasting Real-Time Auctions

DIX ANGUS RANCH

Watch & bid online for **FREE** at

DVAuction
Broadcasting Real-Time Auctions

Can't make the sale? Bid from home with DVAuction's "real time" internet Bidding Service

Buying is as easy as 1, 2, 3...

1. Create an account at www.dvauction.com under the "Create New Account" tab
2. Apply for bidding approval by clicking on the "Apply for Bidding" tab at least 24 hours prior to the auction. A DV representative will notify you once you have been approved
3. Tune in for the sale and make your purchases

After the sale, contact the sale manager or owner to arrange transportation and payment. **High Speed Internet** is required for successful bidding.

Proxy Bidding- If you can't make time to watch the sale, register a proxy bid and let our system represent your bid while you're away

Having troubles? During the auction, you can type a message to the operator at any time for assistance. Our full-time support team can also always be reached at (402) 316-5460.

DVAuction
Broadcasting Real-Time Auctions

The Livestock Industry's Leading Online Marketplace!



SCAN THIS QR CODE USING
YOUR PHONE CAMERA TO
VIEW THE LOT VIDEOS

DIX ANGUS RANCH BULL GUARANTEE

We guarantee that all breeding cattle sold by Dix Angus Ranch are fertile to the best of our knowledge. If at any time during the first breeding season following the sale a bull is injured so as to make them functionally infertile, we will provide you with a satisfactory replacement (if available), or issue you a credit equal to the bull's purchase price minus the salvage value received for that bull. This guarantee is in addition to the Terms and Conditions of the American Angus Association, which also apply.

This is not a life insurance policy. We will not replace or give credit for a dead or incapacitated animal resulting from negligence. We would suggest that normal care still needs to be exercised toward these animals and that particularly the yearling bulls not be allowed to get too thin.

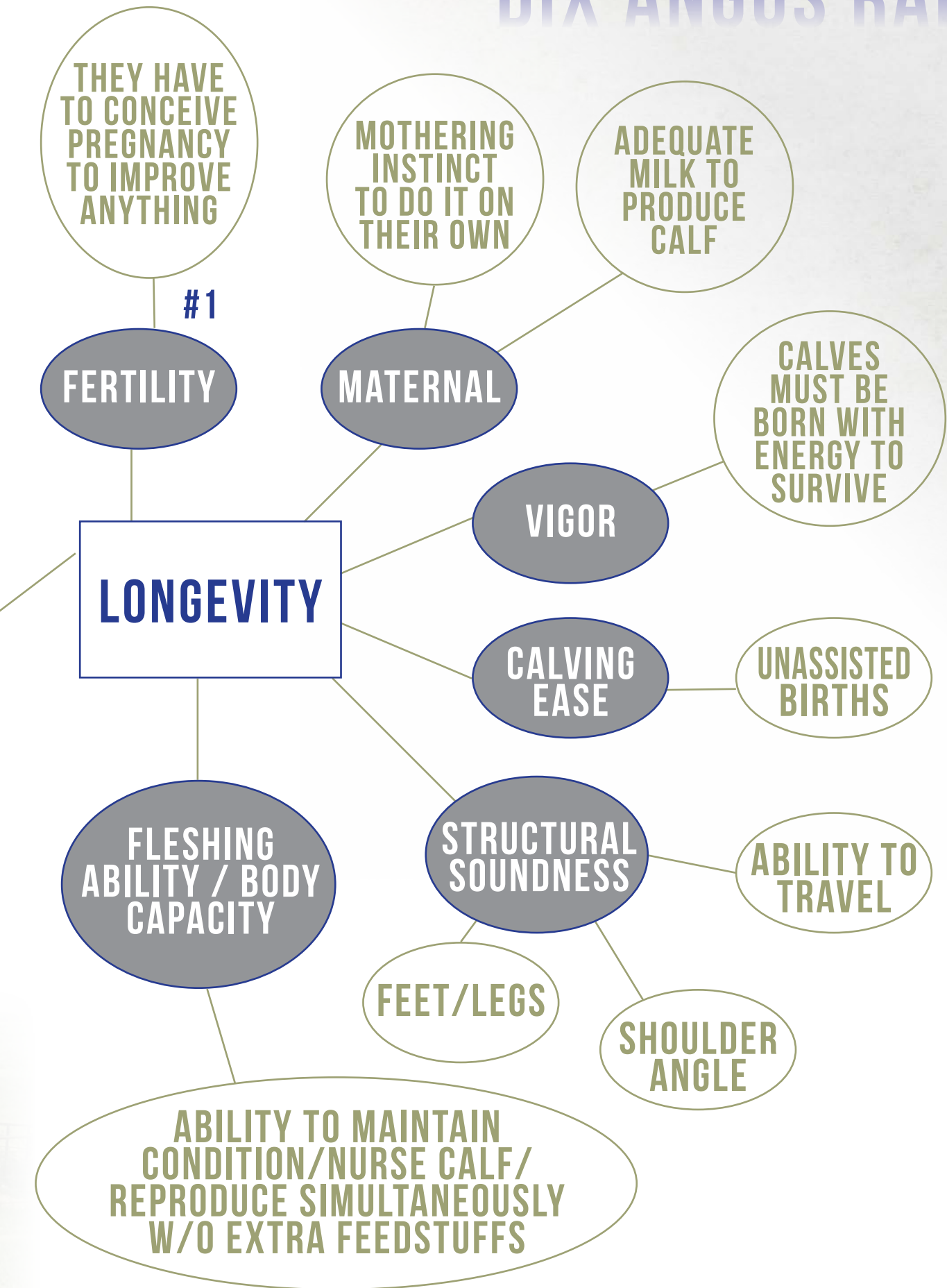
**SALE DAY PICK-UP
\$100 DISCOUNT PER BULL
IF BULLS ARE TAKEN HOME
ON SALE DAY FROM
THE SALE BARN**

MARCH 13, 2023

WHAT'S DIX ANGUS RANCH ALL ABOUT?



DIX ANGUS RANCH



MARCH 13, 2023

DIX ANGUS RANCH

CONSISTENCY, PERFORMANCE, LONGEVITY



HARB PRINCESS VEL 980 J H

**BR 9@99
WR 9@113
YR 7@109**

980 and her 3 flushmate sisters have combined to produce an impressive 34 calves with an Avg. Nursing Ratio of 110

SONS OF 980



DAR LOGO 1287 SON

High Selling Bull 2022 Sale
to Cedar Top Ranch, Stanton, NE



DAR TRADEMARK T014 SON

2nd High Selling Bull 2020 Sale
To John Nilhas, Wakeeny, Ks

PRODUCTION SALE

DIX ANGUS RANCH

ALL IN ONE



HARB PRINCESS VEL Z88 J H
Daughter by Consensus 7229
Current Donor NR 8@106



D A R PROPEL T085
Grandson of 980

Sold as high seller in 2020 to Molitor Angus, Zenda, KS
Currently being used in our AI and ET programs.

8 daughters of 980 have combined
to produce 21 calves with an
Avg. Nursing Ratio of 105



D A R FORERUNNER 2304
Lot 1



HARB HINDQUARTER 473 J H SON
5th High Selling Bull at 2015 Midland Bull Test
Semen at Beef 360



D A R STOCKTON 0101 SON
2nd High Selling Bull at 2021 Sale
to Beef 360

DIX ANGUS RANCH



D A R FORERUNNER 2304 - Lot 1

LOT 1 D A R FORERUNNER 2304
 BIRTH DATE: 02-21-2022 BULL: +*20474345 TATTOO: 2304
 HF Syndicate 213Z #*Connealy Consensus 7229
 #*U-2 COALITION 206C HF Miss Blackcap 27R
 18626847 U2 Erelite 109Z Young Dale Xclusive 25X
 U-2 Erelite 1X
ANGUS #*Connealy Onward #Connealy Lead On
 #*HARB PRINCESS VEL 980 JH Altune of Conanga 6104
 16548463 #H A R B Princess Vel 36 J H #H A R B Cincha 829
 H A R B RCA Princess Vel 03

ACT BW/RATIO
82 / 99
ADJ WW/RATIO
696 / 109

CED	BEPD	WEPD	YEPD	SC	DOC	MILK	\$EN
+10 20%	+2.4 80%	+75 15%	+130 20%	+84 55%	+34 1%	+35 10%	-40 95%
CW	MARB	RE	FAT	\$M	\$W	\$B	\$C
+61 20%	+29 85%	+54 65%	-.035 4%	+76 20%	+73 15%	+139 50%	+256 35%

D A R Forerunner 2304 is a special individual and easy to find when you walk the pens. When you study the phenotype and structure of this bull you are bound to be impressed with the soundness and power that he exhibits. His sire has proven himself to be one of the hottest sires in the breed today, whose dam, U2 Erelite 109Z, is a phenotypic phenomenon, and was purchased from the U2 Ranch Dispersion for \$140,000 by M Diamond Angus, WY and Spickler Ranch South, ND. The dam of Forerunner, HARB Princess Vel 980 JH, has made a name for herself here at our ranch as well as previously while she was working at Harrison Angus Ranch, MT. She has produce 9@113 for weaning and her daughters that we have in production are following in her footsteps. Take a look at all of her impressive attributes on the previous page. Don't Miss Out On This HERD SIRE!



U-2 COALITION 206C - Sire of Lot 1

LOT 2 D A R FLAGSTONE 2394
 BIRTH DATE: 02-23-2022 BULL: +*20501337 TATTOO: 2394
 +*Hoover No Doubt #*Mogck Bullseye
 +*BALDRIDGE FLAGSTONE F411 #Miss Blackcap Ellston J2
 19478642 *Baldridge Isabel Y69 #*Styles Upgrade J59
 +Baldridge Isabel T935
ANGUS #*Connealy Onward #Connealy Lead On
 #*HARB PRINCESS VEL 980 JH Altune of Conanga 6104
 16548463 #H A R B Princess Vel 36 J H #H A R B Cincha 829
 H A R B RCA Princess Vel 03

ACT BW/RATIO
88 / 100
ADJ WW/RATIO
593 / 100

CED	BEPD	WEPD	YEPD	SC	DOC	MILK	\$EN
+6 55%	+2.2 75%	+77 15%	+127 25%	+1.53 15%	+32 3%	+27 45%	-34 90%
CW	MARB	RE	FAT	\$M	\$W	\$B	\$C
+56 30%	+59 55%	+43 80%	+009 45%	+75 20%	+71 15%	+137 55%	+253 40%

Flagstone 2394 combines two of the great cows within the Angus breed; of course, Princess Vel 980 as his dam and his paternal grand dam, Baldridge Isabel Y69 who has produced many big time AI Sires aside from Flagstone. You can look long and hard before you can find a bull with this much maternal power in his background. He ranks at the top of this offering for Foot and Docility Scores.



BALDRIDGE FLAGSTONE F411 - Sire of Lot 2

PRODUCTION SALE

DIX ANGUS RANCH



D A R TENACITY 2402 - Lot 3

LOT 3 D A R TENACITY 2402
 BIRTH DATE: 02-28-2022 BULL *20474141 TATTOO: 2402

#*Plattemere Weigh Up K360 #*Sitz Upward 307R
 MEAD PERSEVERANCE R1266 #Barbara of Plattemere 337
 19162202 #Mead Miss Marathon L835 #Connealy Answer 71
 #Mead Miss Marathon J630
 #*S A V Resource 1441 +Rito 707 of Ideal 3407 7075
 #**D A R HAL R763 *S A V Blackcap May 4136
 19084733 +*D A R Ms Upshot N842 #*EXAR Upshot 0562B
 +*44 Ms New Design 8051

ACT BW/RATIO	84 / 106
ADJ WW/RATIO	693 / 111

CED	BEPD	WEPD	YEPD	SC	DOC	MILK	\$EN
+12 10%	-4 20%	+77 15%	+141 10%	+1.07 40%	+16 65%	+27 45%	-32 90%
CW	MARB	RE	FAT	\$M	\$W	\$B	\$C
+55 35%	+18 95%	+71 40%	+0.39 85%	+74 20%	+74 10%	+122 75%	+232 60%

D A R Tenacity 2402 is the natural calf produced by a recently added 3rd generation and Pathfinder Cow Donor in our ET program. She's earned her way with superior phenotype while combining WW & YW ratio of 4 calves @ 109 while maintaining a 356 day Calving Interval. Travis Warner selected his maternal brother from our 2020 offering. Tenacity is a top performing calving ease bull that has tremendous HERD BULL opportunity.



D A R HAL R763 - Dam of Lot 3

LOT 4 D A R SURPASS 2339
 BIRTH DATE: 02-15-2022 BULL 20507090 TATTOO: 2339

#*TEX Playbook 5437 #*Basin Payweight 1682
 +*BJ SURPASS #Rita 1C43 of 9M26 Complete
 19774516 +*BJ Prophet 5275 #*G A R Prophet
 #BJ Complete 1165
 #BUBS Southern Charm AA31 *Silveiras Conversion 8064
 D A R GINA T965 *Hickory Hill Erica 009
 20260941 D A R Gina O409 8N Upstart 102
 D A R Gina M731

ACT BW/RATIO	76 / 100
ADJ WW/RATIO	675 / 108

CED	BEPD	WEPD	YEPD	SC	DOC	MILK	\$EN
+8 35%	+1.5 60%	+72 20%	+124 25%	+50 75%	+6 95%	+30 25%	-10 30%
CW	MARB	RE	FAT	\$M	\$W	\$B	\$C
+62 20%	+1.04 15%	+61 55%	+0.38 85%	+95 1%	+77 10%	+174 15%	+321 3%

This Lead-off Surpass son was produced by a great young female that is off to a blazing start by posting 2@106 for nursing ratio. He ranks 5th for MARB, \$M, \$B, and is the #1 \$C bull in this offering.



D A R SURPASS 2339 - Lot 4

DIX ANGUS RANCH



D A R PROPEL 2391 - Lot 5

LOT 5 **D A R PROPEL 2391**
 BIRTH DATE: 03-15-2022 BULL: *20461907 TATTOO: 2391

*D A R Turbo R146 #+*S A V Resource 1441
 *D A R Maxine P104
 *HARB Princess Vel Z88 JH #*Connealy Consensus 7229
 #+HARB Princess Vel 980 JH
 #Sitz Dividend 649C
 #Barstow Cash
 *D A R Rita S832 Sitz Barabamere Nell 39a
 19347825 #*Summitcrest Complete 1P55
 #Riverbend Rita 3047

ACT BW/RATIO	78 / 100
ADJ WW/RATIO	653 / 105

CED	BE PD	WE PD	YE PD	SC	DOC	MILK	\$EN
+7 45%	+1 25%	+74 20%	+136 15%	+38 80%	+23 30%	+35 10%	-19 60%
CW	MARB	RE	FAT	\$M	\$W	\$B	\$C
+55 35%	+43 70%	+79 25%	+011 50%	+83 10%	+82 3%	+132 60%	+254 40%

D A R Propel 2391 will lead the showcase of the sire group with is astounding phenotype combined with his curvebending numbers. His dam has produced 3 calves @ 98 for BW and 3@107 WW ratios. His grand dam served as a donor for us with her true Angus cow look and design. A maternal brother is working for Jeff Drees, Ks that he selected in our 2021 Sale. Heifer Bull.



D A R PROPEL T085 - Sire of Lots 5-8

LOT 6 **D A R PROPEL 2387**
 BIRTH DATE: 02-05-2022 BULL: 20531574 TATTOO: 2387

*D A R Turbo R146 #+*S A V Resource 1441
 *D A R Maxine P104
 *HARB Princess Vel Z88 JH #*Connealy Consensus 7229
 #+HARB Princess Vel 980 JH
 #*Connealy Impression
 JMc Black Donna 5526 3342
 *Mccall Black Impression 2053 #CAR Efficient 534
 18378847 Molitor 534 Rito 038-280 Molitor 40N Rito 779-038

ACT BW/RATIO	70 / 89
ADJ WW/RATIO	650 / 104

CED	BE PD	WE PD	YE PD	SC	DOC	MILK	\$EN
+8 35%	+1.0 45%	+72 20%	+132 15%	+45 80%	+18 55%	+26 50%	-30 85%
CW	MARB	RE	FAT	\$M	\$W	\$B	\$C
+49 50%	+84 30%	+65 45%	+031 75%	+64 50%	+67 25%	+144 45%	+251 40%

Another high performing, calving ease prospect by Propel. His dam, 5004, was brought in from the Molitor Angus herd and quickly sorted her way into the donor cow pen for the future. She has very good production records of 5@97 BW, 5@103 WW, 4@104 YW all while maintaining a 362 day calving interval.



D A R PROPEL 2387 - Lot 6

PRODUCTION SALE

DIX ANGUS RANCH



D A R PROPEL 2385 - Lot 7

LOT 7 D A R PROPEL 2385
 BIRTH DATE: 01-25-2022 BULL *20461904 TATTOO: 2385

+*D A R Turbo R146 #*S A V Resource 1441
 *D A R PROPEL T085 *D A R Maxine P104
 19612156 *HARB Princess Vel Z88 JH #*Connealy Consensus 7229
 #*HARB Princess Vel 980 JH
 ANGUS GS #*Styles Upgrade J59 #*Sitz Upward 307R
 #*D A R VELDA M724 Plainview Lassie 71B
 18068613 #DAR JD Velda IF21 JDI New Design 208-5902
 Bairds Velda Q22

ACT BW/RATIO	84/108
ADJ WW/RATIO	672/108

CED	BEPD	WEPD	YEPD	SC	DOC	MILK	\$EN
+5 60%	+2.0 70%	+68 30%	+111 50%	+1.07 40%	+19 50%	+30 25%	-12 40%
CW	MARB	RE	FAT	\$M	\$W	\$B	\$C
+39 75%	+39 75%	+50 70%	+0.21 65%	+83 10%	+72 15%	+105 90%	+219 75%

Propel 2385 has been a favorite from day 1. He is a natural calf from our Velda M724 donor. She is a 2nd generation Pathfinder and donor for us and has raised 8 calves to ratio 109 for WWR while her dam turned in 8@116. Production and fertility goes unmatched in this pedigree when combined with Propel. Full brother to Lot 8.



D A R VELDA M724 - Dam of Lots 7 and 8.

LOT 8 D A R PROPEL 2386
 BIRTH DATE: 02-19-2022 BULL *20464423 TATTOO: 2386

+*D A R Turbo R146 #*S A V Resource 1441
 *D A R PROPEL T085 *D A R Maxine P104
 19612156 *HARB Princess Vel Z88 JH #*Connealy Consensus 7229
 #*HARB Princess Vel 980 JH
 ANGUS GS #*Styles Upgrade J59 #*Sitz Upward 307R
 #*D A R VELDA M724 Plainview Lassie 71B
 18068613 #DAR JD Velda IF21 JDI New Design 208-5902
 Bairds Velda Q22

ACT BW/RATIO	76/92
ADJ WW/RATIO	611/95

CED	BEPD	WEPD	YEPD	SC	DOC	MILK	\$EN
+17 1%	-2.5 2%	+58 60%	+97 70%	+0 95%	+16 65%	+28 35%	-4 20%
CW	MARB	RE	FAT	\$M	\$W	\$B	\$C
+32 85%	+96 20%	+32 90%	+0.54 95%	+86 4%	+68 25%	+123 70%	+246 45%

D A R Propel 2386 is the surefire heifer bull of the two brothers from M724. In addition to his double digit CED, minus BW, and superior production background; he's one of the highest Marbling EPD bulls in the sale. Cale Wilson and Gary Stoecker, both of Oakley, KS bought maternal brothers in last year's sale. Heifer Bull.



D A R PROPEL 2386 - Lot 8

MARCH 13, 2023

DIX ANGUS RANCH



D A R RESILIENT 2334 - Lot 9

LOT 11 D A R RESILIENT 2332
BIRTH DATE: 01-23-2022 BULL: 20494758 TATTOO: 2332

*Sitz Stellar 726D #*Mohnen Substantial 272
*SITZ RESILIENT 10208 #SITZ Pride 200B
19057457 *Sitz Miss Burgess 1856 #*Sitz Top Game 561X
Sitz Miss Burgess 4381
ANGUS **KG Solution 0018** #MOGCK Sure Shot
MOLITOR 0018 CARYN 0109-678 KG Rito Lady 8724
18702626 Molitor 1138 Caryn B702-0109 Molitor Danny Boy 686-1138
#Molitor 0404 Caryn B5021-702

CED	BEPD	WEPD	YEPD	SC	DOC	MILK	\$EN
+5 60%	-6 15%	+64 45%	+111 50%	+63 70%	+8 90%	+32 15%	-25 75%
CW	MARB	RE	FAT	\$M	\$W	\$B	\$C
+34 85%	+.79 30%	+.38 85%	+.038 85%	+60 60%	+69 20%	+118 80%	+213 80%

The third ¾ brother (9 & 10) that is a big statured calving ease. His dam has raised 5@96 in a 366 calving interval. Longevity and Fertility bred into this bull. Heifer Bull.



D A R RESILIENT 2332 - Lot 11

LOT 12 D A R RESILIENT 2337
BIRTH DATE: 02-04-2022 BULL: 20494762 TATTOO: 2337

*Sitz Stellar 726D #*Mohnen Substantial 272
*SITZ RESILIENT 10208 #SITZ Pride 200B
19057457 *Sitz Miss Burgess 1856 #*Sitz Top Game 561X
Sitz Miss Burgess 4381
ANGUS **HA Outside 3878** #*KG Solution 0018
MOLITOR 3878 CHRISTIE070-561 #+HA Blackcap Lady 1914
18378829 Molitor Pen Christie6F10-070 #HARB Pendleton 765 J H
Jak MS Prompter F10

CED	BEPD	WEPD	YEPD	SC	DOC	MILK	\$EN
+13 10%	-7 15%	+65 40%	+111 50%	+69 65%	+5 95%	+28 35%	-13 40%
CW	MARB	RE	FAT	\$M	\$W	\$B	\$C
+40 70%	+.75 35%	+.25 95%	+.028 75%	+65 45%	+70 20%	+122 75%	+223 70%

D A R Resilient 2337 is another sure fire heifer bull prospect from a consistent Outside daughter (6@99) who calves on a 366 day interval. Heifer bull

LOT 13 D A R RESILIENT 2336
BIRTH DATE: 02-01-2022 BULL: 20533561 TATTOO: 2336

*Sitz Stellar 726D #*Mohnen Substantial 272
*SITZ RESILIENT 10208 #SITZ Pride 200B
19057457 *Sitz Miss Burgess 1856 #*Sitz Top Game 561X
Sitz Miss Burgess 4381
ANGUS **#*EF Complement 8088** #Basin Franchise P142
MOLITOR 8088 PRIDE 465-604 +EF Everelda Entense 6117
18684441 Molitor 1138 Pride 009-465 Molitor Danny Boy 686-1138
Molitor InF Pride 861-009

CED	BEPD	WEPD	YEPD	SC	DOC	MILK	\$EN
+12 10%	-1.2 10%	+78 10%	+123 30%	+75 60%	+27 15%	+26 50%	-20 60%
CW	MARB	RE	FAT	\$M	\$W	\$B	\$C
+49 50%	+.82 30%	+.71 40%	+.051 95%	+91 2%	+82 3%	+144 45%	+278 20%

Another Resilient son that is tremendous from a calving ease prospect with his +12 CED and his sub-zero BW with added growth and top 5% HP. Superior balanced cow as his dam by EF Complement. Heifer bull.

LOT 9 D A R RESILIENT 2334
BIRTH DATE: 01-25-2022 BULL: 20494764 TATTOO: 2334

*Sitz Stellar 726D #*Mohnen Substantial 272
*SITZ RESILIENT 10208 #SITZ Pride 200B
19057457 *Sitz Miss Burgess 1856 #*Sitz Top Game 561X
Sitz Miss Burgess 4381
ANGUS **#*KG Solution 0018** #MOGCK Sure Shot
MOLITOR 0018 BARBELLA3027-572 KG Rito Lady 8724
18362962 Molitor 4097 Barbella108-3027 #V D A R Really Windy 4097
Molitor IF Barbella 516-108

CED	BEPD	WEPD	YEPD	SC	DOC	MILK	\$EN
+13 10%	-1.0 10%	+65 40%	+118 35%	+.74 60%	+26 15%	+25 60%	-19 60%
CW	MARB	RE	FAT	\$M	\$W	\$B	\$C
+44 60%	+.81 30%	+.39 85%	+.028 75%	+.89 3%	+64 30%	+147 40%	+280 20%

The first Sitz Resilient son in the line-up. He's easy to find in a heifer bull sort with Double digit CED and negative BW with a larger frame that can get out and move. Top 1% HP. His dam by KG Solution has weaned 6@101 in a 367 day calving interval. ¾ brother to Lot 10 and 11. Heifer Bull.

LOT 10 D A R RESILIENT 2335
BIRTH DATE: 02-05-2022 BULL: 20494761 TATTOO: 2335

*Sitz Stellar 726D #*Mohnen Substantial 272
*SITZ RESILIENT 10208 #SITZ Pride 200B
19057457 *Sitz Miss Burgess 1856 #*Sitz Top Game 561X
Sitz Miss Burgess 4381
ANGUS **#*KG Solution 0018** #MOGCK Sure Shot
MOLITOR 0018 PRIMROSE382-581 KG Rito Lady 8724
18378831 Molitor CTT Primrose 165-382 #*Connealy Contrast
Molitor 509 Primrose 430-165

CED	BEPD	WEPD	YEPD	SC	DOC	MILK	\$EN
+9 30%	-1.1 10%	+76 15%	+132 15%	+1.55 15%	+20 45%	+34 10%	-26 75%
CW	MARB	RE	FAT	\$M	\$W	\$B	\$C
+55 35%	+.73 40%	+.50 70%	+.020 65%	+.81 10%	+.84 2%	+142 45%	+265 30%

Another big statured, calving-ease specialist by Resilient. He is a ¾ brother to Lot 9 and 11. His dam by KG Solution has weaned 6 calves at 103 in a calving interval of 368 days. He is a top 10 bull in this offering for HP. Heifer Bull.



SITZ RESILIENT 10208 - Sire of Lots 9 through 13.



D A R PATHFINDER 2326 - Lot 14

LOT 14 D A R PATHFINDER 2326
BIRTH DATE: 03-01-2022 BULL: 20495866 TATTOO: 2326

*LT Enterprise 5213 #*Connealy Capitalist 028
*KOUPLS B&B PATHFINDER 8 106 *LT Erica 0121
19274968 #*B&B Blkdb Progress 3015 #*Koupals B&B Identity
#*B&B Blkdb Progress 0049

ANGUS GS HARB Horsepower 561 JH #+*PA Power Tool 9108
D A R SOPHIE R769 #HARB Frances 770 JH
19653479 D A R Sophie O408 8N Upstart 102
DAR Sophie M727

ACT BW/RATIO
76 / 96
ADJ WW/RATIO
644 / 103

CED	BEPD	WEPD	YEPD	SC	DOC	MILK	\$EN
+10 20%	-8 15%	+71 25%	+127 25%	+46 80%	+20 45%	+25 60%	-8 25%
CW	MARB	RE	FAT	\$M	\$W	\$B	\$C
+51 45%	+74 35%	+58 60%	+029 75%	+90 2%	+73 15%	+149 35%	+283 15%

The Lead-off Pathfinder sired bull is backed by 2 of our great female producing herd sires in Horsepower and Upstart. His dam has raised 4@104 for WW while 4@96 for BW and 2@115 for IMF! He is also one of the top bulls in this offering for \$Maternal. Top 10% HP. Heifer Bull.



D A R PATHFINDER 2322 - Lot 15

LOT 15 D A R PATHFINDER 2322
BIRTH DATE: 03-04-2022 BULL: *20496170 TATTOO: 2322

*LT Enterprise 5213 #*Connealy Capitalist 028
*KOUPLS B&B PATHFINDER 8 106 *LT Erica 0121
19274968 #*B&B Blkdb Progress 3015 #*Koupals B&B Identity
#*B&B Blkdb Progress 0049

ANGUS GS #+*S A V Resource 1441 +Rito 707 of Ideal 3407 7075
*D A R MAXINE R706 *S A V Blackcap May 4136
18901320 *D A R Maxine P104 #*LD Emblazon 999
*D A R Ms Upgrade N834

ACT BW/RATIO
82 / 104
ADJ WW/RATIO
625 / 100

CED	BEPD	WEPD	YEPD	SC	DOC	MILK	\$EN
+9 30%	+5 35%	+62 50%	+116 40%	+98 45%	-1 95%	+31 20%	-6 25%
CW	MARB	RE	FAT	\$M	\$W	\$B	\$C
+44 60%	+51 65%	+98 10%	+020 65%	+82 10%	+69 20%	+126 70%	+245 50%

Pathfinder x Resource son that is produced by a flush sister to past herd sire, D A R Turbo R146. His dam has produced 3@104 while turning in 1@119 and 1@134 respectively for IMF and RE. This bull should make some superior females. Heifer Bull.

LOT 16 D A R PATHFINDER 2324
BIRTH DATE: 03-16-2022 BULL: 20496173 TATTOO: 2324

*LT Enterprise 5213 #*Connealy Capitalist 028
*KOUPLS B&B PATHFINDER 8 106 *LT Erica 0121
19274968 #*B&B Blkdb Progress 3015 #*Koupals B&B Identity
#*B&B Blkdb Progress 0049

ANGUS GS #HF Prowler 43U HF Kodiak 5R
HARB BLACK LADY B78 JH HF Rosebud 98P
18046770 +HARB Black Lady 977 JH #*Connealy Onward
#H A R B Black Lady 073 J H

ACT BW/RATIO
84 / 106
ADJ WW/RATIO
671 / 108

CED	BEPD	WEPD	YEPD	SC	DOC	MILK	\$EN
+5 60%	+9 45%	+66 35%	+117 35%	+37 80%	+18 55%	+28 35%	-27 80%
CW	MARB	RE	FAT	\$M	\$W	\$B	\$C
+44 60%	+85 25%	+45 75%	+041 85%	+69 35%	+64 30%	+136 55%	+245 50%

A nicely balanced Pathfinder sired son outcrossed with Prowler x Onward. His Prowler dam has raised 7@104 for weaning weight and 7@102 for BW. She's also record 4@115 for IMF. 108 WW ratio on this bull!



KOUPLS B&B PATHFINDER 8 106 - Sire of Lots 14 through 17.

LOT 17 D A R PATHFINDER 2323
BIRTH DATE: 03-06-2022 BULL: 20496167 TATTOO: 2323

*LT Enterprise 5213 #*Connealy Capitalist 028
*KOUPLS B&B PATHFINDER 8 106 *LT Erica 0121
19274968 #*B&B Blkdb Progress 3015 #*Koupals B&B Identity
#*B&B Blkdb Progress 0049

ANGUS GS #+*S A V Resource 1441 +Rito 707 of Ideal 3407 7075
HARB PRINCESS VEL E66 JH *S A V Blackcap May 4136
19038222 #+HARB Princess Vel 988 JH #*Connealy Onward
#H A R B Princess Vel 36 J H

ACT BW/RATIO
78 / 99
ADJ WW/RATIO
518 / 83

CED	BEPD	WEPD	YEPD	SC	DOC	MILK	\$EN
+6 55%	+2.4 80%	+59 60%	+121 30%	+88 50%	+12 80%	+35 10%	-9 30%
CW	MARB	RE	FAT	\$M	\$W	\$B	\$C
+49 50%	+69 45%	+51 70%	+027 70%	+88 3%	+62 35%	+145 40%	+276 20%

This Pathfinder son digs in to the infamous Princess Vel Cow Family with is grand dam as a current donor for us, 988. He's one of the highest HP bulls in the offering. Pathfinder x Resource x Onward, neat production oriented pedigree.

VOLUME DISCOUNT

The purchase of 5 or more bulls
by a single buyer will earn a
5% discount.

DIX ANGUS RANCH



D A R FLAGSTONE 2396 - Lot 18

LOT 18 D A R FLAGSTONE 2396
 BIRTH DATE: 02-16-2022 BULL: +*20546408 TATTOO: 2396
 +*Hoover No Doubt #*Mogck Bullseye
 +*BALDRIDGE FLAGSTONE F411 #*Miss Blackcap Ellston J2
 19478642 *Baldridge Isabel Y69 #*Styles Upgrade J59
 +Baldridge Isabel T935
 ANGUS 8N Upstart 102
 #D A R MS UPSTART N832 #*Sitz Upward 307R
 17588559 +BJ Objective 1076 C C A Blackcap 803
 +BJ Predestined 7041

ACT BW/RATIO
85 / 100
ADJ WW/RATIO
650 / 100

CED	BEPD	WEPD	YEPD	SC	DOC	MILK	\$EN
+10 20%	-.1 25%	+79 10%	+135 15%	+.86 50%	+24 25%	+26 50%	-15 45%
CW	MARB	RE	FAT	\$M	\$W	\$B	\$C
+52 40%	+.91 25%	+.74 35%	-.016 15%	+.86 4%	+.82 3%	+154 30%	+286 15%

Here is the Lead-off Flagstone son from Ms Upstart N832. He is the first of 5 flush brothers in this offering. He's a moderate framed, deep bodied, heavy muscled heifer bull. His Pathfinder dam, Ms Upstart N832, remains in the donor pen today. Take a look at an impressive nursing ratio of 7@108. Maternal sister sells as Lot 102. Flushmates sell as Lots 19, 20, 73 & 74. Herd Bull Potential.



D A R MS UPSTART N832 - Dam of Lots 18-20

LOT 19 D A R FLAGSTONE 2395
 BIRTH DATE: 03-17-2022 BULL: +*20501333 TATTOO: 2395
 +*Hoover No Doubt #*Mogck Bullseye
 +*BALDRIDGE FLAGSTONE F411 #*Miss Blackcap Ellston J2
 19478642 *Baldridge Isabel Y69 #*Styles Upgrade J59
 +Baldridge Isabel T935
 ANGUS 8N Upstart 102
 #D A R MS UPSTART N832 #*Sitz Upward 307R
 17588559 +BJ Objective 1076 C C A Blackcap 803
 +BJ Predestined 7041

ACT BW/RATIO
90 / 108
ADJ WW/RATIO
687 / 107

CED	BEPD	WEPD	YEPD	SC	DOC	MILK	\$EN
+3 75%	+2.3 75%	+81 10%	+134 15%	+1.15 35%	+15 65%	+25 60%	-14 45%
CW	MARB	RE	FAT	\$M	\$W	\$B	\$C
+55 35%	+1.19 10%	+.48 75%	+.028 75%	+.97 1%	+78 10%	+157 25%	+301 10%

This son of Flagstone is a powerfully built individual who is put together correct from the ground up. He checks all the boxes across the board and is the highest MARB EPD bull in the sale. His Pathfinder dam, Ms Upstart N832, remains in the donor pen today. Take a look at an impressive nursing ratio of 7@108. He and his flushmates are also maternal brothers to D A R Blazin Start Q800, purchased by Sackmann Cattle Company, Washington She knocks it out of the park every year. Maternal Sister is the LOT 102 female in this offering. Flushmate to Lots 18, 20, 73 & 74.



D A R FLAGSTONE 2395 - Lot 19

PRODUCTION SALE

DIX ANGUS RANCH

20 D A R FLAGSTONE 2486

BIRTH DATE: 02-16-2022 BULL: +*20546409 TATTOO: 2486
 +*Hoover No Doubt #*Mogck Bullseye
 +*BALDRIDGE FLAGSTONE F411 #*Miss Blackcap Ellston J2
 19478642 #*Baldrige Isabel Y69 #*Styles Upgrade J59
 #*Baldrige Isabel T935
 8N Upstart 102 #*Sitz Upward 307R
 #D A R MS UPSTART N832 C C A Blackcap 803
 17588559 +BJ Objective 1076 #*S S Objective T510 OT26
 +BJ Predestined 7041

CED	BEPD	WEPD	YEPD	SC	DOC	MILK	\$EN
+11 15%	+5 35%	+84 5%	+138 10%	+88 50%	+26 15%	+28 35%	-19 60%
CW	MARB	RE	FAT	\$M	\$W	\$B	\$C
+59 25%	+86 25%	+1.18 2%	-.014 20%	+100 1%	+87 1%	+166 20%	+315 3%

D A R Flagstone 2486 fits right in with his brothers as far as balance and stature. 2486 however is the highest RE EPD Bull in the sale. He is also the #3 ranked bull in the offering in terms of \$C. His Pathfinder dam, Ms Upstart N832, remains in the donor pen today. Take a look at an impressive nursing ratio of 7@108. Flushmate to Lots 18, 19, 73 & 74. Maternal Sister sells as Lot 102. Heifer Bull.



D A R BROADVIEW 2358 - Lot 21

21 D A R BROADVIEW 2358

BIRTH DATE: 02-23-2022 BULL: +*20464425 TATTOO: 2358
 Vermilion Spur E119 #*Connealy Spur
 #*HEIKEN BROADVIEW Vermilion Lass 4071
 19421003 #*JCH BHA Karen 7815 #*SITZ Logo 12964
 #*LD Emblazon 999 JCH Karen 5130
 #*D A R MAXINE P104 #*O C C Emblazon 854E
 18244844 #*D A R Ms Upgrade N834 #*SH Forever Lady 3124 5118
 #*Styles Upgrade J59
 +BJ Objective 8212

CED	BEPD	WEPD	YEPD	SC	DOC	MILK	\$EN
+5 60%	+1.9 65%	+90 2%	+147 5%	+95 45%	+28 10%	+22 80%	-30 85%
CW	MARB	RE	FAT	\$M	\$W	\$B	\$C
+62 20%	+61 50%	+75 30%	+0.02 35%	+85 5%	+81 4%	+145 40%	+273 20%

A big scaled son of Heiken Broadview x Maxine P104. Tremendous Length of body, depth and rib shape. The 713 pound calf a weaning time has never took his foot off the gas. True performance in this bull. Flush mates sell as Lot 22 & 23. COW MAKER.

22 D A R BROADVIEW 2359

BIRTH DATE: 03-01-2022 BULL: +*20464426 TATTOO: 2359
 Vermilion Spur E119 #*Connealy Spur
 #*HEIKEN BROADVIEW Vermilion Lass 4071
 19421003 #*JCH BHA Karen 7815 #*SITZ Logo 12964
 #*LD Emblazon 999 JCH Karen 5130
 #*D A R MAXINE P104 #*O C C Emblazon 854E
 18244844 #*D A R Ms Upgrade N834 #*SH Forever Lady 3124 5118
 #*Styles Upgrade J59
 +BJ Objective 8212

CED	BEPD	WEPD	YEPD	SC	DOC	MILK	\$EN
+11 15%	-3 20%	+69 30%	+126 25%	+159 15%	+17 60%	+26 50%	-21 65%
CW	MARB	RE	FAT	\$M	\$W	\$B	\$C
+46 55%	+94 20%	+53 65%	+0.23 65%	+61 55%	+68 25%	+153 30%	+259 35%

This is the calving ease specialist of the 3 flush brothers by Heiken Broadview x P104. Not only calving ease but he is the highest MARB EPD of the 3. Should make superior daughters that are easy fleshing. Flushmates sell as Lots 21 & 23. Heifer Bull.

23 D A R BROADVIEW 2357

BIRTH DATE: 02-21-2022 BULL: +*20464424 TATTOO: 2357
 Vermilion Spur E119 #*Connealy Spur
 #*HEIKEN BROADVIEW Vermilion Lass 4071
 19421003 #*JCH BHA Karen 7815 #*SITZ Logo 12964
 #*LD Emblazon 999 JCH Karen 5130
 #*D A R MAXINE P104 #*O C C Emblazon 854E
 18244844 #*D A R Ms Upgrade N834 #*SH Forever Lady 3124 5118
 #*Styles Upgrade J59
 +BJ Objective 8212

CED	BEPD	WEPD	YEPD	SC	DOC	MILK	\$EN
+8 35%	+5 35%	+81 10%	+139 10%	+1.77 10%	+20 45%	+26 50%	-28 80%
CW	MARB	RE	FAT	\$M	\$W	\$B	\$C
+47 55%	+88 25%	+76 30%	+0.14 55%	+82 10%	+78 10%	+137 55%	+260 35%

D A R Broadview 2357 is the high RE EPD of this flush. His dam also has an avg WW ratio of 115 and is consistent in terms of carcass with 37@107 and 37@105 for IMF and RE. Flushmates Sell as Lots 21 & 22. Heifer Bull.



HEIKEN BROADVIEW - Sire of Lots 21, 22, 23

24 D A R TURBO 2362

BIRTH DATE: 04-08-2022 BULL: +*20468735 TATTOO: 2362
 #*S A V Resource 1441 +Rito 707 of Ideal 3407 7075
 #*D A R TURBO R146 #*S A V Blackcap May 4136
 18900778 #*D A R Maxine P104 #*LD Emblazon 999
 #*D A R Ms Upgrade N834
 #*S A V Resource 1441 +Rito 707 of Ideal 3407 7075
 #*D A R MAXINE R705 #*S A V Blackcap May 4136
 18901319 #*D A R Maxine P104 #*LD Emblazon 999
 #*D A R Ms Upgrade N834

CED	BEPD	WEPD	YEPD	SC	DOC	MILK	\$EN
+7 45%	+1.6 60%	+80 10%	+157 2%	+63 70%	+22 35%	+24 70%	-46 95%
CW	MARB	RE	FAT	\$M	\$W	\$B	\$C
+69 10%	+35 80%	+86 20%	+0.40 85%	+43 95%	+65 30%	+153 30%	+241 50%

D A R Turbo 2362 is a unique individual in terms of the last Turbo son we will ever off as his sire was lost due to injury. In his is a line bred performance bull as he combines the great Maxine P104 cow on both side of the pedigree. The #2 YW Bull in the sale.



D A R TURBO 2362 - Lot 24

DIX ANGUS RANCH



D A R Bomber 2378 - Lot 25

LOT 25 D A R Bomber 2378

BIRTH DATE: 03-01-2022 BULL *20494522 TATTOO: 2378

#+*KM Broken Bow 002 #*Summitcrest Complete 1P55
 *CASINO Bomber N33 #Summitcrest Princess 0P12
 18658677 #*Casino Annie K48 DPL Upward L70
 Casino Annie G64

ANGUS GS #+*Basin Payweight 1682 #+*Basin Payweight 0065
 #D A R Irene S847 21AR O Lass 7017
 19347812 +D A R Irene N819 #*Connealy Confidence 0100
 #Molitor 2720 Irene 9025-1047

ACT BW/RATIO
74 / 95
ADJ WW/RATIO
646 / 104

CED	BE PD	WE PD	YE PD	SC	DOC	MILK	\$EN
+12 10%	-1.9 4%	+79 10%	+142 10%	+52 75%	+25 20%	+41 1%	-33 90%
CW	MARB	RE	FAT	\$M	\$W	\$B	\$C
+75 4%	+30 85%	+77 30%	+023 65%	+79 15%	+92 1%	+149 35%	+272 25%

A True curvebender of a bull from Bomber. He will fit in well in any heifer project or making a cow herd better. His dam is one our favorite phenotype cows in the herd with her moderate stature, perfect udder, bold rib, easy fleshing ability with a beautiful front 1/3. She's also produced 3@106 for WW and is on watch to enter the donor pen in the future. She stems back to the great Irene 1047 cow that started it all for us. Heifer Bull.

LOT 26 D A R Bomber 2379

BIRTH DATE: 03-03-2022 BULL *20494523 TATTOO: 2379

#+*KM Broken Bow 002 #*Summitcrest Complete 1P55
 *CASINO Bomber N33 #Summitcrest Princess 0P12
 18658677 #*Casino Annie K48 DPL Upward L70
 Casino Annie G64

ANGUS GS #*HARB JH Overhaul 659 #*LD Emblazon 999
 D A R Merica S804 #+HARB Princess Vel 980 JH
 19300854 HARB Merica Y79 JH #*Kesslers Frontman R001
 HARB Madeline Erica 189 JH

ACT BW/RATIO
72 / 92
ADJ WW/RATIO
702 / 113

CED	BE PD	WE PD	YE PD	SC	DOC	MILK	\$EN
+11 15%	-1.1 10%	+79 10%	+125 25%	+1.18 30%	+14 70%	+26 50%	-31 85%
CW	MARB	RE	FAT	\$M	\$W	\$B	\$C
+51 45%	+72 40%	+63 50%	+014 55%	+67 40%	+80 4%	+138 50%	+246 45%

This Bomber son is a calving ease specialist with at +700 pound WW. His dam by Overhaul (Son of Princess Vel 980) has turned in 3@110 for WW while maintain 3@95 BW ratio. He's got the tools to make the calves that are born light and wean heavy. Heifer Bull.

LOT 27 D A R Bomber 2384

BIRTH DATE: 03-22-2022 BULL *20494438 TATTOO: 2384

#+*KM Broken Bow 002 #*Summitcrest Complete 1P55
 *CASINO Bomber N33 #Summitcrest Princess 0P12
 18658677 #*Casino Annie K48 DPL Upward L70
 Casino Annie G64

ANGUS GS #+*Basin Payweight 1682 #+*Basin Payweight 0065
 +*D A R Erica S844 21AR O Lass 7017
 19997982 Summitcrest Erica 105X #Salt Creek Bob 7003
 #Summitcrest Erica 359P

ACT BW/RATIO
72 / 92
ADJ WW/RATIO
651 / 104

CED	BE PD	WE PD	YE PD	SC	DOC	MILK	\$EN
+8 35%	-1 25%	+79 10%	+120 35%	+55 75%	+27 15%	+21 85%	-7 25%
CW	MARB	RE	FAT	\$M	\$W	\$B	\$C
+59 25%	+94 20%	+59 55%	+056 95%	+85 5%	+81 4%	+162 20%	+295 10%

Another great heifer bull prospect from Bomber x 1682. His dam has raised 3@104 for WW while his grand dam has produced 10@107. One of the Highest MARB and \$C bulls in the offering. Heifer Bull.



CASINO Bomber N33 - Sire of Lots 25-30

DIX ANGUS RANCH

LOT 28 D A R BOMBER 2375

BIRTH DATE: 02-11-2022 BULL: 20494500 TATTOO: 2375

#+*KM Broken Bow 002 #*Summitcrest Complete 1P55

*CASINO BOMBER N33 #Summitcrest Princess 0P12

18658677 #*Casino Annie K48 DPL Upward L70

ANGUS 6S #*S Niagara Z29 Casino Annie G64

+D A R PRINCESS VEL T901 #*Hoover Dam

19659520 #*HARB Princess Vel Z88 JH Jet S S X144

#*Connealy Consensus 7229

#+HARB Princess Vel 980 JH

ACT BW/RATIO

86 / 113

ADJ WW/RATIO

735 / 118

CED	BEPD	WEPD	YEPD	SC	DOC	MILK	\$EN
+8 35%	+2.4 80%	+107 1%	+180 1%	+2.09 2%	+19 50%	+28 35%	-65 95%
CW	MARB	RE	FAT	\$M	\$W	\$B	\$C
+85 1%	+66 45%	+97 10%	-0.012 20%	+71 30%	+92 1%	+177 10%	+301 10%

Here is the #1 bull in the sale in terms of WW and YW EPD and a 735# weaning weight. He's a big framed bull that is very athletic. Take a look at his maternal pedigree! His dam has weaned 2@113, his grand dam, Z88, 8@106; and great grand dam, 980, 9@113. His full brother in blood sells as Lot 29.



HARB PRINCESS VEL Z88 JH - Maternal granddam of Lots 28 and 29.



D A R BOMBER 2376 - Lot 29

LOT 29 D A R BOMBER 2376

BIRTH DATE: 02-14-2022 BULL: 20494497 TATTOO: 2376

#+*KM Broken Bow 002 #*Summitcrest Complete 1P55

*CASINO BOMBER N33 #Summitcrest Princess 0P12

18658677 #*Casino Annie K48 DPL Upward L70

ANGUS 6S #*S Niagara Z29 Casino Annie G64

+D A R PRINCESS VEL T902 #*Hoover Dam

19659522 #*HARB Princess Vel Z88 JH Jet S S X144

#*Connealy Consensus 7229

#+HARB Princess Vel 980 JH

ACT BW/RATIO

84 / 110

ADJ WW/RATIO

687 / 110

CED	BEPD	WEPD	YEPD	SC	DOC	MILK	\$EN
+4 70%	+1.7 65%	+91 2%	+149 4%	+69 65%	+22 35%	+28 35%	-36 95%
CW	MARB	RE	FAT	\$M	\$W	\$B	\$C
+76 4%	+1.14 10%	+79 25%	+0.021 65%	+74 20%	+88 1%	+186 5%	+315 3%

This performance/maternal oriented bull is a full brother in blood to Lot 28. His dam has weaned 2@109, his grand dam, Z88, 8@106; and great grand dam, 980, 9@113. His dam has had 1@137 for IMF and this bull is one of the Top MARB Bulls in this sale.



LOT 30 D A R BOMBER 2381

BIRTH DATE: 03-03-2022 BULL: *20494526 TATTOO: 2381

#+*KM Broken Bow 002 #*Summitcrest Complete 1P55

*CASINO BOMBER N33 #Summitcrest Princess 0P12

18658677 #*Casino Annie K48 DPL Upward L70

ANGUS 6S #*Basin Payweight 1682 #*Basin Payweight 0065

+D A R BLACKCAP R701 21AR O Lass 7017

18903275 #*Deer Valley Blackcap 51291 #*Plattmeyer Weigh Up K360

+*Rita 1194 of 2536 Rito 616

ACT BW/RATIO

70 / 89

ADJ WW/RATIO

647 / 104

CED	BEPD	WEPD	YEPD	SC	DOC	MILK	\$EN
+9 30%	+5 35%	+92 1%	+150 4%	+1.48 15%	+18 55%	+31 20%	-41 95%
CW	MARB	RE	FAT	\$M	\$W	\$B	\$C
+82 2%	+85 25%	+94 15%	-0.022 15%	+60 60%	+93 1%	+182 10%	+296 10%

This is another high performance Bomber son. His Payweight dam has weaned 4@101 and his grand dam is the Blackcap 51291 donor that did a very nice job for us in the donor pen. Heifer Bull.



D A R TRAILBLAZER 2351 - Lot 31

LOT 31 D A R TRAILBLAZER 2351

BIRTH DATE: 02-05-2022 BULL: 20505503 TATTOO: 2351

#*V A R Discovery 2240 #*A A R Ten X 7008 S A

*FERGUSON TRAILBLAZER 239E #*Deer Valley Rita 0308

18996007 #Molitor999 Barbella 940-3012 #*LD Emblazon 999

ANGUS 6S #*KG Solution 0018 Molitor FA Barbella 389-940

MOLITOR 0018 ERICA 270-675 #*MOGCK Sure Shot

18702623 Molitor CTT Erica 024-270 KG Rita Lady 8724

#*Connealy Contrast

Molitor 713 Erica 724-024

ACT BW/RATIO

66 / 84

ADJ WW/RATIO

608 / 97

CED	BEPD	WEPD	YEPD	SC	DOC	MILK	\$EN
+14 4%	-2.0 4%	+80 10%	+140 10%	+1.15 35%	+27 15%	+25 60%	-38 95%
CW	MARB	RE	FAT	\$M	\$W	\$B	\$C
+50 45%	+1.01 15%	+51 70%	+0.021 65%	+74 20%	+77 10%	+153 30%	+272 25%

A double digit CED and minus BW Trailblazer son with some of the top performance EPDs in the offering. He is also one of the top MARB bulls in the pen as well as the #1 HP bull. Heifer Bull.

DIX ANGUS RANCH



D A R PLUS ONE 2315 - Lot 32

LOT 34 D A R COALITION 2306
BIRTH DATE: 03-03-2022 BULL *20474330 TATTOO: 2306

HF Syndicate 213Z #*Connealy Consensus 7229
18626847 U2 Erelite 109Z HF Miss Blackcap 27R
U-2 Erelite 1X

ANGUS #*HARB Night Fox 393 JH

D A R JERICA S812

19300864 HARB Jerica A80 JH

#HF Prowler 43U
#*HARB Princess Vel 988 JH
#*TC Forthright 9284
#H A R B Juanada Erica 387 JH

ACT BW/RATIO
80 / 103
ADJ WW/RATIO
664 / 106

CED	BEPD	WEPD	YEPD	SC	DOC	MILK	\$EN
+8 35%	+1.7 65%	+76 15%	+137 15%	+1.23 30%	+35 1%	+33 15%	-31 85%
CW	MARB	RE	FAT	\$M	\$W	\$B	\$C
+56 30%	+42 75%	+42 80%	+006 45%	+78 15%	+76 10%	+133 60%	+251 40%

This is a really cool son of Coalition that is very well put together. One of the easiest going bulls as you walk the pens. His dam by Night Fox (son of Princess Vel 988) has produced 3@102 for WW. He will be found by many people on sale day.



D A R COALITION 2306 - Lot 34

LOT 35 D A R COALITION 2303
BIRTH DATE: 03-04-2022 BULL *20474331 TATTOO: 2303

HF Syndicate 213Z #*Connealy Consensus 7229
18626847 U2 Erelite 109Z HF Miss Blackcap 27R
U-2 Erelite 1X

ANGUS #*LD Emblazon 999

***D A R MAXINE P104**

18244844 *D A R Ms Upgrade N834

#*O C C Emblazon 854E
#*SH Forever Lady 3124 5118
#*Styles Upgrade J59
#BJ Objective 8212

ACT BW/RATIO
86 / 104
ADJ WW/RATIO
651 / 102

CED	BEPD	WEPD	YEPD	SC	DOC	MILK	\$EN
+12 10%	+6 35%	+75 15%	+124 25%	+42 80%	+30 5%	+32 15%	-22 65%
CW	MARB	RE	FAT	\$M	\$W	\$B	\$C
+32 85%	+57 55%	+53 65%	-016 15%	+86 4%	+81 4%	+106 90%	+223 70%

D A R Coalition 2303 is a Maxine P104 son that is bound to make some tremendous replacement females. His flush sister in our keeper pen at home are 2nd to none. Heifer Bull.



D A R COALITION 2303 - Lot 35

LOT 32 D A R PLUS ONE 2315
BIRTH DATE: 02-16-2022 BULL 20476016 TATTOO: 2315

#*Connealy Confidence Plus #*Connealy Confidence 0100
19196960 #*E&B Lady 1023 Precision 936 Elbanna of Conanga 1209
#*E&B 1680 Precision 1023
E&B Lady 878 New Design 441

ANGUS #*EF Complement 8088

MOLITOR 8088 ERICA 2909-509

18373541 Molitor 9132 Erica 909-2909

#Basin Franchise P142
+EF Everelda Entense 6117
#SVF Answer W132
Molitor IN Erica 781-909

ACT BW/RATIO
62 / 78
ADJ WW/RATIO
614 / 98

CED	BEPD	WEPD	YEPD	SC	DOC	MILK	\$EN
+15 2%	-2.4 3%	+62 50%	+117 35%	+21 90%	+18 55%	+28 35%	-26 75%
CW	MARB	RE	FAT	\$M	\$W	\$B	\$C
+46 55%	+57 55%	+76 30%	+008 45%	+40 95%	+63 35%	+146 40%	+229 65%

A very well put together Plus One son from a beautiful EF Complement daughter. Superior calving-ease bull with great maternal advantage. Heifer Bull.



D A R PLUS ONE 2313 - Lot 33

LOT 33 D A R PLUS ONE 2313
BIRTH DATE: 02-05-2022 BULL 20476017 TATTOO: 2313

#*Connealy Confidence Plus #*Connealy Confidence 0100
19196960 #*E&B Lady 1023 Precision 936 Elbanna of Conanga 1209
#*E&B 1680 Precision 1023
E&B Lady 878 New Design 441

ANGUS #*Jindra Double Vision

#MOLITOR DV PRIDE 064-535

18362946 Molitor Pen Pride 809-064

#Connealy Reflection
+Hoff Rachel 8312 405
#HARB Pendleton 765 J H
#Molitor NFOC Pride 656-809

ACT BW/RATIO
80 / 101
ADJ WW/RATIO
620 / 99

CED	BEPD	WEPD	YEPD	SC	DOC	MILK	\$EN
+12 10%	-1.1 10%	+60 55%	+113 45%	+29 85%	+16 65%	+38 2%	-16 50%
CW	MARB	RE	FAT	\$M	\$W	\$B	\$C
+52 40%	+75 35%	+71 40%	+025 70%	+67 40%	+71 15%	+154 30%	+267 25%

D A R Plus One 2313 is another sure fire calving-ease bull with a good look when you walk into the pen. He dam by Double Vision has weaned 6@103. Heifer Bull.

DIX ANGUS RANCH



D A R CRUSH 2321 - Lot 36

LOT 36 D A R CRUSH 2321 [CHF]
 BIRTH DATE: 02-08-2022 BULL 20547988 TATTOO: 2321
 *Marcys Scale Crusher #Sitz Upward 307R
 +*S A V CRUSH 0935 #+Marcys Erica 393
 19852819 +*S A V Blackcap May 4574 #+S A V Resource 1441
 #+S A V Blackcap May 5530
 ANGUS GS +*D A R Gunslinger R177 *L/R Colt 45 3045
 D A R ALTHEA T935 Summitcrest Elba 1Y90
 19651460 D A R Althea Q681 #Deer Valley All In
 D A R Althea O446

ACT BW/RATIO
76 / 100
ADJ WW/RATIO
693 / 111

CED	BEPD	WEPD	YEPD	SC	DOC	MILK	\$EN
+2 85%	+1.5 60%	+78 10%	+140 10%	-47 95%	+17 60%	+23 75%	-32 90%
CW	MARB	RE	FAT	\$M	\$W	\$B	\$C
+55 35%	+31 85%	+86 20%	+008 45%	+61 55%	+68 25%	+131 60%	+231 65%

This S A V Crush son is the high performance bull in the sale in terms of actual pounds. He's been a standout all along. His Gunslinger dam has turned in 2@108 for WW and well on her way to Pathfinder status. This a great performance bull with a stellar look.

LOT 37 D A R CRUSH 2320
 BIRTH DATE: 03-05-2022 BULL *20548055 TATTOO: 2320
 *Marcys Scale Crusher #Sitz Upward 307R
 +*S A V CRUSH 0935 #+Marcys Erica 393
 19852819 +*S A V Blackcap May 4574 #+S A V Resource 1441
 #+S A V Blackcap May 5530
 ANGUS GS #*GDAR Leupold 298 #*A A R Leupold 0578
 #+*D A R BLACKCAP S842 *GDAR Miss Blackcap 9232
 19347831 +*Deer Valley Blackcap 51291 #Plattemere Weigh Up K360
 +*Rita 1194 of 2536 Rito 616

ACT BW/RATIO
76 / 97
ADJ WW/RATIO
667 / 107

CED	BEPD	WEPD	YEPD	SC	DOC	MILK	\$EN
+11 15%	+6 35%	+80 10%	+132 15%	+1.56 15%	+23 30%	+34 10%	-35 90%
CW	MARB	RE	FAT	\$M	\$W	\$B	\$C
+64 15%	+22 90%	+81 25%	-002 30%	+73 25%	+85 2%	+131 60%	+243 50%

Here is a great phenotype Crush son that is produced from superior Leupold dam. S842 has produced 3@105 and has a very nicely balanced udder. Calving Ease bull with a lot of Maternal Excellence bred in as well. Heifer Bull.

LOT 38 D A R CRUSH 2318
 BIRTH DATE: 02-21-2022 BULL *20548053 TATTOO: 2318
 *Marcys Scale Crusher #Sitz Upward 307R
 +*S A V CRUSH 0935 #+Marcys Erica 393
 19852819 +*S A V Blackcap May 4574 #+S A V Resource 1441
 #+S A V Blackcap May 5530
 ANGUS GS #+SITZ Response 405C #+S A V Resource 1441
 +*D A R ERICA S884 #+Sitz Ellunas Elite 656T
 19412156 Summitcrest Erica 105X #Salt Creek Bob 7003
 #Summitcrest Erica 359P

ACT BW/RATIO
76 / 97
ADJ WW/RATIO
640 / 103

CED	BEPD	WEPD	YEPD	SC	DOC	MILK	\$EN
+7 45%	+1.5 60%	+66 35%	+121 30%	+17 90%	+21 40%	+32 15%	-25 75%
CW	MARB	RE	FAT	\$M	\$W	\$B	\$C
+43 65%	+48 65%	+44 80%	+059 95%	+69 35%	+67 25%	+118 80%	+222 70%

This Crush son has been an exciting one to watch grow up as well. His dam by Sitz Response has wean 3@104 while his grand dam has 10@107 and 34@108 for IMF. Calving ease bull.



D A R CRUSH 2318 - Lot 38

DIX ANGUS RANCH



D A R RENO 2356 - Lot 39

LOT 39 D A R RENO 2356
BIRTH DATE: 02-24-2022 BULL *20477176 TATTOO: 2356

#*KM Broken Bow 002
#*SPRING COVE RENO 4021
17926446 *Spring Cove Liza 021

ANGUS GS

#*Connealy Consensus 7229
#*HARB PRINCESS VEL Z88 JH
17456565 #+HARB Princess Vel 980 JH

#*Summitcrest Complete 1P55
#Summitcrest Princess 0P12
#*C C A Emblazon 702
Spring Cove Liza 721

#*Connealy Consensus
Blue Lilly of Conanga 16
#*Connealy Onward
#H A R B Princess Vel 36 J H

ACT BW/RATIO
90 / 108
ADJ WW/RATIO
642 / 100

CED	BEPD	WEPD	YEPD	SC	DOC	MILK	\$EN
+7 45%	+2.9 85%	+91 2%	+150 4%	+1.23 30%	+19 50%	+21 85%	-34 90%
CW	MARB	RE	FAT	\$M	\$W	\$B	\$C
+50 45%	+98 20%	+42 80%	-.021 15%	+68 35%	+77 10%	+145 40%	+256 35%

The Lead-off Reno son of this offering by Z88 is back by our deepest cow family. His dam, Z88, has weaned 8@106; grand dam, 980, 9@113; great grand dam, 36, 14@100. Longevity, Consistency, Fertility, and Performance represents this bull and his flush-mates very well. Flush mates sell as Lots 40 & 41.

LOT 40 D A R RENO 2354
BIRTH DATE: 02-18-2022 BULL *20477163 TATTOO: 2354

#*KM Broken Bow 002
#*SPRING COVE RENO 4021
17926446 *Spring Cove Liza 021

ANGUS GS

#*Connealy Consensus 7229
#*HARB PRINCESS VEL Z88 JH
17456565 #+HARB Princess Vel 980 JH

#*Summitcrest Complete 1P55
#Summitcrest Princess 0P12
#*C C A Emblazon 702
Spring Cove Liza 721

#*Connealy Consensus
Blue Lilly of Conanga 16
#*Connealy Onward
#H A R B Princess Vel 36 J H

ACT BW/RATIO
80 / 96
ADJ WW/RATIO
642 / 100

CED	BEPD	WEPD	YEPD	SC	DOC	MILK	\$EN
+11 15%	+0 25%	+80 10%	+141 10%	+40 80%	+13 75%	+22 80%	-32 90%
CW	MARB	RE	FAT	\$M	\$W	\$B	\$C
+57 30%	+1.07 15%	+58 60%	-.035 4%	+69 35%	+72 15%	+177 10%	+299 10%

Reno 2354 is the most widely balanced flush mate of the group from an EPD standpoint. He's got the sure-fire heifer bull boxes checked, he's got the performance covered and he offers the most carcass oriented package of the 3 as he is best of the 3 in CW, MARB, and RE. All of that and the maternal excellence to back him up. Good Bull. Don't Miss him. Heifer Bull.



D A R RENO 2354 - Lot 40

LOT 41 D A R RENO 2355
BIRTH DATE: 02-23-2022 BULL *20477175 TATTOO: 2355

#*KM Broken Bow 002
#*SPRING COVE RENO 4021
17926446 *Spring Cove Liza 021

ANGUS GS

#*Connealy Consensus 7229
#*HARB PRINCESS VEL Z88 JH
17456565 #+HARB Princess Vel 980 JH

#*Summitcrest Complete 1P55
#Summitcrest Princess 0P12
#*C C A Emblazon 702
Spring Cove Liza 721

#*Connealy Consensus
Blue Lilly of Conanga 16
#*Connealy Onward
#H A R B Princess Vel 36 J H

ACT BW/RATIO
88 / 106
ADJ WW/RATIO
656 / 103

CED	BEPD	WEPD	YEPD	SC	DOC	MILK	\$EN
+14 4%	-3 20%	+67 35%	+110 50%	+1.64 10%	+29 10%	+35 10%	-13 40%
CW	MARB	RE	FAT	\$M	\$W	\$B	\$C
+28 90%	+92 20%	+35 90%	-.002 30%	+98 1%	+80 4%	+117 80%	+250 45%

Another good Reno x Z88 son that is the highest ranking for HP of the flush. His dam, Z88, has weaned 8@106; grand dam, 980, 9@113; great grand dam, 36, 14@100. His SC EPD in the top 10% and HP in the top 4% of the breed, should influence high fertility in his progeny. Heifer Bull.

LOT 42 D A R WOODSTON 2418
BIRTH DATE: 04-02-2022 BULL *20465827 TATTOO: 2418

#*Plattemere Weigh Up K360
#*D A R WOODSTON R104
18900691 +*D A R Rita M703

ANGUS GS

#*Connealy Consensus 7229
#*HARB PRINCESS VEL Z88 JH
17456565 #+HARB Princess Vel 980 JH

#*Sitz Upward 307R
#Barbara of Plattemere 337
#*Hoover Dam
ACF Rita 0005

#*Connealy Consensus
Blue Lilly of Conanga 16
#*Connealy Onward
#H A R B Princess Vel 36 J H

ACT BW/RATIO
78 / 99
ADJ WW/RATIO
631 / 103

CED	BEPD	WEPD	YEPD	SC	DOC	MILK	\$EN
+15 2%	-1.7 5%	+61 50%	+114 40%	+88 50%	+11 80%	+25 60%	-21 65%
CW	MARB	RE	FAT	\$M	\$W	\$B	\$C
+36 80%	+1.05 15%	+27 95%	-.007 45%	+47 90%	+60 40%	+144 45%	+234 60%

The lone D A R Woodston R104 son in the sale is the natural calf of our impressive donor, HARB Princess Vel Z88 JH, who is also the dam of D A R Propel T085. His +15 CED and - BW places him into the sure-fire calving ease calving category. Heifer Bull.



HARB PRINCESS VEL Z88 JH - Dam of Lots 39 through 43.

LOT 43 D A R GUNSLINGER 2425
BIRTH DATE: 03-10-2022 BULL *20464416 TATTOO: 2425

*L/R Colt 45 3045
#*D A R GUNSLINGER R177
18966558 Summitcrest Elba 1Y90

ANGUS GS

#*Connealy Consensus 7229
#*HARB PRINCESS VEL Z88 JH
17456565 #+HARB Princess Vel 980 JH

S/C Medicine Man 01Y7
#Summitcrest Blizzard 0X62
#*Summitcrest Complete 1P55
Summitcrest Elba 0K96

#*Connealy Consensus
Blue Lilly of Conanga 16
#*Connealy Onward
#H A R B Princess Vel 36 J H

ACT BW/RATIO
74 / 89
ADJ WW/RATIO
664 / 104

CED	BEPD	WEPD	YEPD	SC	DOC	MILK	\$EN
+13 10%	-2.1 3%	+62 50%	+122 30%	+1.22 30%	+33 2%	+33 15%	-35 90%
CW	MARB	RE	FAT	\$M	\$W	\$B	\$C
+54 35%	+72 40%	+52 65%	-.022 65%	+64 50%	+65 30%	+157 25%	+268 25%

This is the 5th consecutive Z88 son, this time by Gunslinger. Big time heifer bull with top 20% HP. We've been excited for this mating to come to fruition as the sisters in this flush are looking great in the replacement pen. Heifer Bull.

DIX ANGUS RANCH



D A R GUNSLINGER 2369 - Lot 44

LOT 44 D A R GUNSLINGER 2369
 BIRTH DATE: 03-16-2022 BULL *20464427 TATTOO: 2369

*L/R Colt 45 3045 S/C Medicine Man 01Y7
 #Summitcrest Blizzard 0X62
 #Summitcrest Complete 1P55
 Summitcrest Elba 0K96

ANGUS #LD Emblazon 999 #+O C C Emblazon 854E
 #+SH Forever Lady 3124 5118
 #*Styles Upgrade J59
 +BJ Objective 8212

ACT BW/RATIO
 78 / 94
ADJ WW/RATIO
 692 / 108

CED	BEPD	WEPD	YEPD	SC	DOC	MILK	\$EN
+12 10%	-.9 15%	+69 30%	+126 25%	+1.35 25%	+26 15%	+30 25%	-15 45%
CW	MARB	RE	FAT	\$M	\$W	\$B	\$C
+50 45%	+.43 70%	+.66 45%	+.010 50%	+70 30%	+74 10%	+130 65%	+239 55%

D A R Gunslinger 2369 is my favorite from the Gunslinger x Maxine P104 flush as I walk the pens. Then looking at the data, it matches up. Powerfully built calving ease bull will top 25% performance. Fleshing ability in this flush should be 2nd to none. Flush brothers sell as Lot 45, 81 & 83. Flush Sister sell as Lot 110. Heifer Bull.

LOT 46 D A R GUNSLINGER 2429
 BIRTH DATE: 03-16-2022 BULL *20468727 TATTOO: 2429

*L/R Colt 45 3045 S/C Medicine Man 01Y7
 #Summitcrest Blizzard 0X62
 #Summitcrest Complete 1P55
 Summitcrest Elba 0K96

ANGUS #*Connealy Capitalist 028 #*S A V Final Answer 0035
 Prides Pita of Conanga 8821
 #*Hoover Dam
 ACF Rita 0005

ACT BW/RATIO
 76 / 96
ADJ WW/RATIO
 573 / 92

CED	BEPD	WEPD	YEPD	SC	DOC	MILK	\$EN
+8 35%	-1.4 10%	+53 75%	+102 65%	+.56 70%	+21 40%	+33 15%	-11 35%
CW	MARB	RE	FAT	\$M	\$W	\$B	\$C
+37 75%	+.55 60%	+.45 75%	+.045 90%	+57 70%	+62 35%	+125 70%	+219 75%

This Gunslinger son is another superb option for a heifer project. Looking back into the pedigree his grand dam and great dam were both past donors for us. His dam is a Maternal sister to AI Sire D A R Woodston R104, who is working for McClaren Angus, Fowler, KS. Heifer Bull.

LOT 45 D A R GUNSLINGER 2422
 BIRTH DATE: 03-17-2022 BULL *20465834 TATTOO: 2422

*L/R Colt 45 3045 S/C Medicine Man 01Y7
 #Summitcrest Blizzard 0X62
 #Summitcrest Complete 1P55
 Summitcrest Elba 0K96

ANGUS #LD Emblazon 999 #+O C C Emblazon 854E
 #+SH Forever Lady 3124 5118
 #*Styles Upgrade J59
 +BJ Objective 8212

ACT BW/RATIO
 80 / 100
ADJ WW/RATIO
 697 / 100

CED	BEPD	WEPD	YEPD	SC	DOC	MILK	\$EN
-3 95%	+3.3 90%	+82 10%	+139 10%	+1.00 45%	+20 45%	+20 90%	-22 65%
CW	MARB	RE	FAT	\$M	\$W	\$B	\$C
+56 30%	+.34 80%	+.58 60%	+.016 55%	+65 45%	+67 25%	+130 65%	+234 60%

Gunslinger 2422 is the high performing son of this flush with top 10% Performance in both WW and YW. . Fleshing ability in this flush should be 2nd to none. Flush brothers sell as Lot 44, 81 & 83. Flush Sister sell as Lot 110.



D A R GUNSLINGER 2429 - Lot 46

DIX ANGUS RANCH

LOT 47 D A R GUNSLINGER 2431

BIRTH DATE: 03-17-2022 BULL: 20468728 TATTOO: 2431

*L/R Colt 45 3045 S/C Medicine Man 01Y7
 #Summitcrest Blizzard 0X62
 #Summitcrest Complete 1P55
 Summitcrest Elba 0K96

ANGUS

*HARB Hindquarter 473 JH

+HARB Stur-D 191 JH

D A R RITA Q677

#HARB Princess Vel 980 JH

18564111 +*D A R Rita Q425

#*EF Complement 8088

+Daltons Rita 911

ACT BW/RATIO

72 / 91

ADJ WW/RATIO

599 / 96

CED	BEPD	WEPD	YEPD	SC	DOC	MILK	\$EN
+13 10%	-1.8 5%	+52 80%	+112 45%	+1.67 10%	+36 1%	+26 50%	-10 30%
CW	MARB	RE	FAT	\$M	\$W	\$B	\$C
+52 40%	+29 85%	+59 55%	+050 95%	+64 50%	+52 65%	+140 50%	+246 45%

This calving ease specialist by Gunslinger is also one of the tamest bulls in the pen as you walk through to evaluate. It matches his top 1% Docility Ranking. Heifer Bull.



D A R GUNSLINGER 2434 - Lot 48

LOT 48 D A R GUNSLINGER 2434

BIRTH DATE: 03-23-2022 BULL: *20468731 TATTOO: 2434

*L/R Colt 45 3045 S/C Medicine Man 01Y7
 #Summitcrest Blizzard 0X62
 #Summitcrest Complete 1P55
 Summitcrest Elba 0K96

ANGUS

Sitz Investment 648B

#*Sitz Investment 660Z

#*D A R EISA ERIRA S891

Sitz Barabamere Nell 18U

19412142 D A R Eisa Erica Q657

Deer Valley X-Treme 2731

DAR Eisa Erica L525

ACT BW/RATIO

72 / 92

ADJ WW/RATIO

619 / 99

CED	BEPD	WEPD	YEPD	SC	DOC	MILK	\$EN
+9 30%	-2.2 3%	+60 55%	+106 55%	+1.45 20%	+24 25%	+21 85%	-7 25%
CW	MARB	RE	FAT	\$M	\$W	\$B	\$C
+32 85%	+45 70%	+42 80%	+060 95%	+73 25%	+60 40%	+107 90%	+212 80%

Another sure fire calving ease option derived the combination of our past herd sires, Investment 648B and Deer Valley Xtreme. He's more modest in his stature with great depth and power as a -2 BW bull. Heifer Bull.



BJ SURPASS - Sire of Lots 49 & 50



D A R GUNSLINGER R177 - Sire of Lots 43-48

LOT 49 D A R SURPASS 2342

BIRTH DATE: 03-15-2022 BULL: *20507187 TATTOO: 2342

#*TEX Playbook 5437 #*Basin Payweight 1682
 #*Rita 1C43 of 9M26 Complete
 #*G A R Prophet
 #*BJ Complete 1165

ANGUS

#*Basin Payweight 1682

#*Basin Payweight 0065

#*D A R BLACKCAP R702

21AR O Lass 7017

18903272 #*Deer Valley Blackcap 51291

#*Plattmeyer Weigh Up K360

+*Rita 1194 of 2536 Rito 616

ACT BW/RATIO

76 / 96

ADJ WW/RATIO

660 / 106

CED	BEPD	WEPD	YEPD	SC	DOC	MILK	\$EN
+14 4%	-7 15%	+73 20%	+128 20%	+12 90%	+19 50%	+36 4%	-13 40%
CW	MARB	RE	FAT	\$M	\$W	\$B	\$C
+55 35%	+92 20%	+38 85%	+034 80%	+96 1%	+86 2%	+152 30%	+293 10%

This Surpass son is one of the to \$M bulls in the offering in addition to one of the top Marbling bulls available. His dam by Payweight 1682, is a flushmate to a past highlight at Midland Bull Test, D A R Bull City R111, that was purchased by Post Rock Cattle Company, Barnard, Ks. Heifer Bull.



D A R SURPASS 2342 - Lot 49

LOT 50 D A R SURPASS 2344

BIRTH DATE: 03-23-2022 BULL: *20507191 TATTOO: 2344

#*TEX Playbook 5437 #*Basin Payweight 1682
 #*Rita 1C43 of 9M26 Complete
 #*G A R Prophet
 #*BJ Complete 1165

ANGUS

+*Rito 12E7 of 5F56 Rito 5M2

#*Rito Revenue 5M2 of 2536 Pre

#*BJ 12E7 RITO 5258

+*Rita 5F56 of 1198 FD

18531384 #*BJ Complete 1268

#*Summitcrest Complete 1P55

+BJ Objective 8212

ACT BW/RATIO

70 / 89

ADJ WW/RATIO

653 / 105

CED	BEPD	WEPD	YEPD	SC	DOC	MILK	\$EN
+11 15%	+1.7 65%	+69 30%	+111 50%	+37 80%	+11 80%	+31 20%	-5 20%
CW	MARB	RE	FAT	\$M	\$W	\$B	\$C
+51 45%	+1.01 15%	+67 45%	+045 90%	+101 1%	+77 10%	+157 25%	+305 5%

Surpass 2344 comes in as the High \$M bull of the day. His dam by 12E7 is superb in her design, fleshing ability, and perfect udder. He's one of the highest ranking bulls in the sale in HP, Marb, & \$M. His Maternal Brother sold as Lot 1 in the 2020 sale to Jim Anderes, Hope, Ks. Heifer Bull.

DIX ANGUS RANCH



D A R JAMESON 2331 - Lot 51

LOT 51 D A R JAMESON 2331

BIRTH DATE: 02-28-2022 BULL: *20474087 TATTOO: 2331

*21AR Packer 4313 #Connealy Packer 547
 *PYRAMID JAMESON 9212 21AR Estrada 9032
 19675327 McLennan Lady Blue 347 Pyramid 8186 0221
 ANGUS GS #Summit Lady Blue 782
 #*PA Power Tool 9108 #*G A R Predestined
 HARB WENDY C65 JH #Shamrocks Beebe Queen 3095
 18377217 HARB Wendy 987 JH #*S A V Final Answer 0035
 #H A R B Wendy 273 J H

ACT BW/RATIO
 80 / 101
 ADJ WW/RATIO
 689 / 110

CED	BEPD	WEPD	YEPD	SC	DOC	MILK	\$EN
+6 55%	+1.9 65%	+67 35%	+114 40%	+1.83 10%	+22 35%	+19 95%	-12 40%
CW	MARB	RE	FAT	\$M	\$W	\$B	\$C
+44 60%	+62 50%	+46 75%	+0.81 95%	+61 55%	+58 50%	+126 70%	+224 70%

This son of Jameson will be a sale day highlight and he is a personal favorite of mine. His dam and his maternal sister are each current donors in our ET program. WWR 5@111, YWR 3@108, IMF4@102 RE 4@104 and a 370 day calving interval is the record his dam, Wendy C65, has put together. Very nice patterned bull, who is very athletic in his motion. He also scored in the TOP 1% for tenderness on his Angus GS profile. Herd Bull.

LOT 52 D A R COALITON 2301

BIRTH DATE: 02-23-2022 BULL: *20474336 TATTOO: 2301

HF Syndicate 213Z #*Connealy Consensus 7229
 #*U-2 COALITION 206C HF Miss Blackcap 27R
 18626847 U2 Erelite 109Z Young Dale Xclusive 25X
 ANGUS GS U-2 Erelite 1X
 #S A V Mustang 9134 #*S A V Final Answer 0035
 HARB MERICA 273 JH #S A V Emblynette 7415
 18029948 HARB Madeline Erica 189 JH #H A R B Cincha 829
 HARB Madeline Erica 887 JH

ACT BW/RATIO
 98 / 118
 ADJ WW/RATIO
 619 / 97

CED	BEPD	WEPD	YEPD	SC	DOC	MILK	\$EN
+11 15%	+3.6 95%	+71 25%	+126 25%	+1.62 10%	+26 15%	+30 25%	-35 90%
CW	MARB	RE	FAT	\$M	\$W	\$B	\$C
+49 50%	+45 70%	+33 90%	+0.12 50%	+60 60%	+62 35%	+121 75%	+217 75%

D A R Coalition 2301 is what of great performance bulls of the offering. Take a look at the power in the hip of this bull in a larger stature and added length; he will push the scales down. His dam is working in our ET program. A maternal brother sold in our Inaugural sale to Damion Dix, Stockton. His flush brother sells as lot 97.

LOT 53 D A R POWERBALL 2364

BIRTH DATE: 03-17-2022 BULL: *20467608 TATTOO: 2364

#*PA Power Tool 9108 #*G A R Predestined
 #*RAVEN POWERBALL 53 #Shamrocks Beebe Queen 3095
 17632447 #*Raven Emma E 4241 #*Hoover Dam
 ANGUS GS PCAR Emma E 2215
 #*TC Grid Topper 355 #*G A R Grid Maker
 #HARB BLACK LADY 688 JH #TC Pride 8067
 15486104 #H A R B Black Lady 073 J H #H A R B Cincha 829
 H A R B Black Lady G67 J H

ACT BW/RATIO
 90 / 108
 ADJ WW/RATIO
 766 / 120

CED	BEPD	WEPD	YEPD	SC	DOC	MILK	\$EN
+5 60%	+2.8 85%	+75 15%	+131 20%	+1.24 30%	+28 10%	+27 45%	-35 90%
CW	MARB	RE	FAT	\$M	\$W	\$B	\$C
+55 35%	+51 65%	+60 55%	-0.12 20%	+61 55%	+66 25%	+131 60%	+231 65%

The lone Raven Powerball son from the past donor, Black Lady 688 is something special. He is the heaviest 205 day WW bull in the offering. His dam is the maternal sister to HARB Windy 702 JH (\$25,000 high selling bull, 2003 Midland Bull Test) and HARB Stur-D 191 JH (\$50k high seller at 2012 MBT). Donor dam produced 11@106 for weaning weight. He should be a sale day favorite.



D A R POWERBALL 2364 - Lot 53

DIX ANGUS RANCH

LOT 54 D A R COMPLETE 2372

BIRTH DATE: 02-12-2022 BULL: 20465828 TATTOO: 2372

#*EF Complement 8088 #Basin Franchise P142
#WOODHILL COMPLETE A130-C2 +EF Everelda Entense 6117
18248948 #Woodhill Evergreen U181-A130 #*Hoover Dam
Woodhill Evergreen R53-U181

ANGUS GS #*S S Niagara Z29 #*Hoover Dam
D A R MAXINE T952 Jet S S X144
19661637 +*D A R Maxine R707 #*S A V Resource 1441
*D A R Maxine P104

ACT BW/RATIO
76 / 100
ADJ WW/RATIO
655 / 105

CED	BEPD	WEPD	YEPD	SC	DOC	MILK	\$EN
+10 20%	-.5 15%	+82 10%	+132 15%	+1.04 40%	+16 65%	+31 20%	-24 70%
CW	MARB	RE	FAT	\$M	\$W	\$B	\$C
+56 30%	+.67 45%	+.66 45%	+.085 95%	+.87 4%	+.90 1%	+133 60%	+260 35%

D A R Complete 2372 is another bull that has been easy to spot for anybody walking the pens. As one studies the data he checks a lot of boxes and is one the top bulls in the sale for \$Weaning. His young dam from the Maxine cow family has already weaned 2@104. Heifer Bull.



D A R COMPLETE 2372 - Lot 54

LOT 55 D A R COMPLETE 2373

BIRTH DATE: 01-26-2022 BULL: *20464418 TATTOO: 2373

#*EF Complement 8088 #Basin Franchise P142
#WOODHILL COMPLETE A130-C2 +EF Everelda Entense 6117
18248948 #Woodhill Evergreen U181-A130 #*Hoover Dam
Woodhill Evergreen R53-U181

ANGUS GS #*Woodhill Blueprint #*Connealy Confidence Plus
+*D A R PRINCESS VEL 0015 #*Woodhill Evergreen Z291-B233
19960470 #+HARB Princess Vel 980 JH #*Connealy Onward
#H A R B Princess Vel 36 J H

ACT BW/RATIO
80 / 110
ADJ WW/RATIO
629 / 110

CED	BEPD	WEPD	YEPD	SC	DOC	MILK	\$EN
+7 45%	+.8 40%	+82 10%	+137 15%	+.29 85%	+11 80%	+29 30%	-47 95%
CW	MARB	RE	FAT	\$M	\$W	\$B	\$C
+58 25%	+.59 55%	+.59 55%	+.035 80%	+.40 95%	+.78 10%	+143 45%	+225 70%

This Complete son is a grandson of the great Princess Vel 980. His dam has all the makings to be the most productive 980 yet, by her 110 WW ratio on her first calf, early breed back and excellent udder and phenotype.

LOT 56 D A R COMPLETE 2374

BIRTH DATE: 02-03-2022 BULL: 20464419 TATTOO: 2374

#*EF Complement 8088 #Basin Franchise P142
#WOODHILL COMPLETE A130-C2 +EF Everelda Entense 6117
18248948 #Woodhill Evergreen U181-A130 #*Hoover Dam
Woodhill Evergreen R53-U181

ANGUS GS #*Spring Cove Reno 4021 #+*KM Broken Bow 002
+D A R PRINCESS VELL 0032 #*Spring Cove Liza 021
19961796 #+HARB Princess Vel 980 JH #*Connealy Onward
#H A R B Princess Vel 36 J H

ACT BW/RATIO
70 / 98
ADJ WW/RATIO
580 / 101

CED	BEPD	WEPD	YEPD	SC	DOC	MILK	\$EN
+7 45%	+1.4 55%	+76 15%	+124 25%	+1.85 5%	+27 15%	+28 35%	-24 70%
CW	MARB	RE	FAT	\$M	\$W	\$B	\$C
+50 45%	+.95 20%	+.46 75%	+.050 95%	+.86 4%	+.77 10%	+145 40%	+274 20%

Another calving-ease son of Woodhill Complete. His dam is a flushmate to the Exclusive BEEF-360 Sire, and 2nd High selling bull in 2021, D A R Stockton 0101. He also has added Marbling in the top 20%. Heifer Bull.

LOT 57 D A R COMPLETE 2366

BIRTH DATE: 03-17-2022 BULL: *20465830 TATTOO: 2366

#*EF Complement 8088 #Basin Franchise P142
#WOODHILL COMPLETE A130-C2 +EF Everelda Entense 6117
18248948 #Woodhill Evergreen U181-A130 #*Hoover Dam
Woodhill Evergreen R53-U181

ANGUS GS #S A V Mustang 9134 #*S A V Final Answer 0035
HARB MERICA Z73 JH #S A V Emblynette 7415
18029948 HARB Madeline Erica 189 JH #H A R B Cincha 829
HARB Madeline Erica 887 JH

ACT BW/RATIO
88 / 106
ADJ WW/RATIO
698 / 109

CED	BEPD	WEPD	YEPD	SC	DOC	MILK	\$EN
+15 2%	+.5 35%	+74 20%	+123 30%	+.76 60%	+21 40%	+32 15%	-32 90%
CW	MARB	RE	FAT	\$M	\$W	\$B	\$C
+53 40%	+1.13 10%	+.44 80%	+.078 95%	+.79 15%	+.77 10%	+155 30%	+280 20%

This is a stellar designed bull by Woodhill Complete. His dam, Merica Z73, has produced 6@108 and is currently holding a position in our ET program. He's a really good calving ease bull with a 700# WW. Heifer Bull.

LOT 58 D A R COMPLETE 2371

BIRTH DATE: 02-06-2022 BULL: 20537799 TATTOO: 2371

#*EF Complement 8088 #Basin Franchise P142
#WOODHILL COMPLETE A130-C2 +EF Everelda Entense 6117
18248948 #Woodhill Evergreen U181-A130 #*Hoover Dam
Woodhill Evergreen R53-U181

ANGUS GS #*KG Solution 0018 #MOGCK Sure Shot
MOLITOR 0018 PWRHOUSE383-588 KG Rito Lady 8724
18378836 Molitor CTT Pwrhouse 168-383 #*Connealy Contrast
Molitor 509 Pwrhouse 354-168

ACT BW/RATIO
66 / 84
ADJ WW/RATIO
583 / 93

CED	BEPD	WEPD	YEPD	SC	DOC	MILK	\$EN
+5 60%	-.1 25%	+68 30%	+118 35%	+1.02 40%	+20 45%	+21 85%	-12 40%
CW	MARB	RE	FAT	\$M	\$W	\$B	\$C
+53 40%	+.78 35%	+.65 45%	+.038 85%	+.68 35%	+.65 30%	+152 30%	+265 30%

Another Low Birthweight son of Complete. He's more modest in his stature and powerful in his look. Light BW and added growth is this bull.



WOODHILL COMPLETE A130-C2 - Sire of Lots 54 through 59.

LOT 59 D A R COMPLETE 2367

BIRTH DATE: 03-17-2022 BULL: *20537801 TATTOO: 2367

#*EF Complement 8088 #Basin Franchise P142
#WOODHILL COMPLETE A130-C2 +EF Everelda Entense 6117
18248948 #Woodhill Evergreen U181-A130 #*Hoover Dam
Woodhill Evergreen R53-U181

ANGUS GS #S A V Mustang 9134 #*S A V Final Answer 0035
HARB MERICA Z73 JH #S A V Emblynette 7415
18029948 HARB Madeline Erica 189 JH #H A R B Cincha 829
HARB Madeline Erica 887 JH

ACT BW/RATIO
82 / 99
ADJ WW/RATIO
665 / 100

CED	BEPD	WEPD	YEPD	SC	DOC	MILK	\$EN
+11 15%	+.9 45%	+70 25%	+116 40%	+1.23 30%	+16 65%	+28 35%	-25 75%
CW	MARB	RE	FAT	\$M	\$W	\$B	\$C
+146 55%	+1.78 35%	+1.44 80%	+1.052 95%	+.69 35%	+.68 25%	+141 45%	+252 40%

This just adds to the lineup of calving ease bulls from Woodhill Complete backed with maternal power. He is double digit CED with top 25% WW EPD. Heifer Bull.



D A R PERSEVERANCE 2403 - Lot 60

LOT 60 D A R PERSEVERANCE 2403
BIRTH DATE: 02-11-2022 BULL: 20474138 TATTOO: 2403

#*Plattmere Weigh Up K360 #*Sitz Upward 307R
MEAD PERSEVERANCE R1266 #Barbara of Plattmere 337
19162202 #Mead Miss Marathon L835 #Connealy Answer 71
#Mead Miss Marathon J630

ANGUS GS HARB Horsepower 561 JH #*PA Power Tool 9108
D A R MAXINE T949 #HARB Frances 770 JH
19651468 +*D A R Maxine P102 #*A R Ten X 7008 S A
+BJ Objective 8212

ACT BW/RATIO
72 / 95
ADJ WW/RATIO
608 / 97

CED	BEPD	WEPD	YEPD	SC	DOC	MILK	\$EN
+12 10%	-7 15%	+67 35%	+116 40%	+37 80%	+17 60%	+31 20%	-11 35%
CW	MARB	RE	FAT	\$M	\$W	\$B	\$C
+29 90%	+90 25%	+65 45%	+0 35%	+72 25%	+76 10%	+128 65%	+238 55%

Perseverance 2403 combined with a Horsepower daughter from the Maxine family is an excellent choice for a calving ease bull. His also one of the higher Marbling bulls in this offering. Two flushmate brothers to his dam sold in past sales to Lester Ellenz and Loren Pauls of Tipton. Heifer Bull.

LOT 61 D A R PERSEVERANCE 2404
BIRTH DATE: 03-01-2022 BULL: *20474153 TATTOO: 2404

#*Plattmere Weigh Up K360 #*Sitz Upward 307R
MEAD PERSEVERANCE R1266 #Barbara of Plattmere 337
19162202 #Mead Miss Marathon L835 #Connealy Answer 71
#Mead Miss Marathon J630

ANGUS GS #*Hoover Dam #*SydGen C C & 7
+*D A R MAXINE Q651 #Erica of Ellston C124
18588015 +BJ Objective 8212 #*S S Objective T510 OT26
+BJ Predestined 6082

ACT BW/RATIO
84 / 106
ADJ WW/RATIO
560 / 90

CED	BEPD	WEPD	YEPD	SC	DOC	MILK	\$EN
+4 70%	+2.0 70%	+62 50%	+111 50%	+61 70%	+16 65%	+31 20%	-20 60%
CW	MARB	RE	FAT	\$M	\$W	\$B	\$C
+27 95%	+1.22 10%	+37 85%	-.004 30%	+65 45%	+62 35%	+139 50%	+245 50%

This Perseverance son is the #1 Marbling EPD bull of the sale. His dam is a Hoover Dam from the 8212 donor who is the matriarch to the Maxine Cow family. Good maternal background.



MEAD PERSEVERANCE R1266 - Sire of Lots 60 through 63.

LOT 62 D A R PERSEVERANCE 2409
BIRTH DATE: 02-20-2022 BULL: *20474155 TATTOO: 2409

#*Plattmere Weigh Up K360 #*Sitz Upward 307R
MEAD PERSEVERANCE R1266 #Barbara of Plattmere 337
19162202 #Mead Miss Marathon L835 #Connealy Answer 71
#Mead Miss Marathon J630

ANGUS GS #*Styles Upgrade J59 #*Sitz Upward 307R
#*D A R Velda M724 Plainview Lassie 718
18068613 #DAR JD Velda IF21 JDI New Design 208-5902
Bairds Velda Q22

ACT BW/RATIO
82 / 100
ADJ WW/RATIO
583 / 100

CED	BEPD	WEPD	YEPD	SC	DOC	MILK	\$EN
+9 30%	-6 15%	+58 60%	+104 60%	+57 70%	+26 15%	+39 2%	-7 25%
CW	MARB	RE	FAT	\$M	\$W	\$B	\$C
+38 75%	+58 55%	+56 60%	+025 70%	+98 1%	+74 10%	+121 75%	+255 40%

This Mead Perseverance son is one of the top \$Maternal bull in the sale. He has maternal production running deep in his background as his dam, Velda M724, has produced 8@109. His grand dam, Velda IF21 raised 8@116. Heifer Bull.

LOT 63 D A R PERSEVERANCE 2407
BIRTH DATE: 03-16-2022 BULL: 20474151 TATTOO: 2407

#*Plattmere Weigh Up K360 #*Sitz Upward 307R
MEAD PERSEVERANCE R1266 #Barbara of Plattmere 337
19162202 #Mead Miss Marathon L835 #Connealy Answer 71
#Mead Miss Marathon J630

ANGUS GS #*S A V Resource 1441 +Rito 707 of Ideal 3407 7075
HARB BLACK LADY E61 JH *S A V Blackcap May 4136
19038220 #HARB Black Lady 688 JH #+TC Grid Topper 355
#H A R B Black Lady 073 J H

ACT BW/RATIO
84 / 106
ADJ WW/RATIO
658 / 105

CED	BEPD	WEPD	YEPD	SC	DOC	MILK	\$EN
+6 55%	+1.8 65%	+68 30%	+116 40%	+76 60%	+21 40%	+18 95%	-26 75%
CW	MARB	RE	FAT	\$M	\$W	\$B	\$C
+40 70%	+61 50%	+54 65%	+033 80%	+61 55%	+55 55%	+127 65%	+226 70%

This Perseverance son goes back to the Resource x Black Lady 688 daughter. This is a maternal gem with that many great cows in the bottom side of the pedigree.



D A R THRIVE 2316 - Lot 64

LOT 64 D A R THRIVE 2316
BIRTH DATE: 03-23-2022 BULL: *20473972 TATTOO: 2316

Tehama Revere #*D R Sierra Cut 7404
#*S THRIVE JAS 5515 Tehama Elite Blackbird T003
18159105 #S Selena 201 #*S Summit 956
#S Selena 0418

ANGUS GS #HARB Hindquarter 473 JH +HARB Stur-D 191 JH
#*D A R EVER ENTENSE Q601 #+HARB Princess Vel 980 JH
18679473 +*Spruce Mtn Ever Entense 1016 #21AR Roundup 7005
+*SMR Ever Entense 7675

ACT BW/RATIO
74 / 94
ADJ WW/RATIO
639 / 102

CED	BEPD	WEPD	YEPD	SC	DOC	MILK	\$EN
+9 30%	+9 45%	+70 25%	+119 35%	+59 70%	+24 25%	+28 35%	-25 75%
CW	MARB	RE	FAT	\$M	\$W	\$B	\$C
+36 80%	+30 85%	+60 55%	+027 70%	+69 35%	+70 20%	+98 95%	+196 90%

The lone S Thrive son of the day paired with a very productive Hindquarter daughter who has a perfect udder and has produced 5@106. Heifer Bull.

DIX ANGUS RANCH



KG JUSTIFIED 3023 - Sire of Lots 65 and 66.

LOT 65 D A R JUSTIFIED 2346

BIRTH DATE: 01-26-2022 BULL: 20494637 TATTOO: 2346
 Connealy Judgment #*Connealy Consensus 7229
 #*KG JUSTIFIED 3023 #Entrine of Conanga 9876
 17707279 KG Miss Magic 1443 #*Sitz Wisdom 481T
 ANGUS #*Werner War Party 2417
 S S War Party A8 #Elba S S Y3
 #MOLITOR A8 BARBELLA3049-5017 Sedgwick Farm Plan X192
 18378855 Molitor FP Barbella1008-3049 Molitor EFC Barbella683-1008

ACT BW/RATIO
68 / 86
ADJ WW/RATIO
567 / 91

CED	BEPD	WEPD	YEPD	SC	DOC	MILK	\$EN
+12 10%	-4.2 1%	+48 85%	+90 80%	+2.30 1%	+12 80%	+41 1%	-13 40%
CW	MARB	RE	FAT	\$M	\$W	\$B	\$C
+29 90%	+92 20%	+25 95%	+066 95%	+71 30%	+66 25%	+128 65%	+237 55%

Look at this heifer bull deluxe. +13 CED -4.2 BW from a cow that has raised 6@100 and holds a calving interval of 364 days. HP is top 3% and SC is top 1% Calving-ease and fertility will go unmatched. Sure-Fire Heifer Bull.

LOT 66 D A R JUSTIFIED 2345

BIRTH DATE: 01-20-2022 BULL: 20494639 TATTOO: 2345
 Connealy Judgment #*Connealy Consensus 7229
 #*KG JUSTIFIED 3023 #Entrine of Conanga 9876
 17707279 KG Miss Magic 1443 #*Sitz Wisdom 481T
 ANGUS #*KG Solution 0018 #MOGCK Sure Shot
 #MOLITOR 0018 ERINTHIA359-587 KG Rito Lady 8724
 18378835 #Molitor 746 Erinthia 735-359 #*Connealy Right Answer 746
 Molitor Erinthia D1650-735

ACT BW/RATIO
60 / 76
ADJ WW/RATIO
576 / 92

CED	BEPD	WEPD	YEPD	SC	DOC	MILK	\$EN
+19 1%	-5.0 1%	+43 95%	+77 95%	+1.82 10%	+22 35%	+31 20%	-5 20%
CW	MARB	RE	FAT	\$M	\$W	\$B	\$C
+22 95%	+96 20%	+22 95%	+046 90%	+80 10%	+54 60%	+125 70%	+242 50%

Another Justified son that has superior calving-ease and astounding fertility in his background. He's top 5% for HP and top 10% SC. His dam has raised 6@100 in 366 day calving interval. Sleep all night Heifer Bull.

LOT 67 D A R MAGNITUDE 2501

BIRTH DATE: 02-15-2022 BULL: 20475798 TATTOO: 2501
 #*K C F Bennett Southside #Nichols Extra K205
 #MEAD MAGNITUDE #*K C F Miss 208 S11
 18543414 #*Mead Primrose N198 #*Plattmire Weigh Up K360
 #*Basin Payweight 1682 #*Basin Payweight 0065
 #MOLITOR 1682 ELEANOR 335-520 21AR O Lass 7017
 18362941 Molitor9132 Eleanor 9298-335 #SVF Answer W132
 Molitor 40N Eleanor 498-929

ACT BW/RATIO
58 / 73
ADJ WW/RATIO
543 / 87

CED	BEPD	WEPD	YEPD	SC	DOC	MILK	\$EN
+17 1%	-3.1 1%	+60 55%	+111 50%	+1.17 30%	+20 45%	+36 4%	-26 75%
CW	MARB	RE	FAT	\$M	\$W	\$B	\$C
+1-50 45%	+1-61 50%	+1-57 60%	+1-006 45%	+52 80%	+66 25%	+136 55%	+228 65%

This Magnitude son is the 2nd Highest CED and 3rd Lowest BW EPD bull. He's got some performance to go along with all of that calving ease. Heifer Bull.

LOT 68 D A R GREAT PLAINS 2487

BIRTH DATE: 02-16-2022 BULL: 20533560 TATTOO: 2487
 *Curtin 1682 Payweight 7032 #*Basin Payweight 1682
 WINDY RIDGE GREAT PLAINS 013 #Curtin Erica 3104
 19815704 Windy Ridge Brazen Lady 512 #*A A R Ten X 7008 S A
 ANGUS #*EF Complement 8088 #Basin Franchise P142
 #*LD Emblazon 999
 #*EF Everelda Entense 6117
 #*LD Emblazon 999
 Molitor 999 Polly 233-4025 Molitor 746 Polly 090-233

ACT BW/RATIO
80 / 100
ADJ WW/RATIO
595 / 97

CED	BEPD	WEPD	YEPD	SC	DOC	MILK	\$EN
+11 15%	-1.7 5%	+62 50%	+125 25%	+46 80%	+17 60%	+34 10%	-30 85%
CW	MARB	RE	FAT	\$M	\$W	\$B	\$C
+36 80%	+87 25%	+22 95%	+055 95%	+59 65%	+66 25%	+134 55%	+233 60%

This Great Plains son fits the mold for another great calving ease bull. Double digit CED and minus BW. He's a larger statured bull with more growth than other CE bulls. HP is top 10%

LOT 69 D A R BOMBER 2383

BIRTH DATE: 03-17-2022 BULL: *20494510 TATTOO: 2383
 #*KM Broken Bow 002 #*Summitcrest Complete 1P55
 *CASINO BOMBER N33 #Summitcrest Princess 0P12
 18658677 #*Casino Annie K48 DPL Upward L70
 ANGUS #*Basin Payweight 1682 #*Basin Payweight 0065
 #*D A R ERICA S843 21AR O Lass 7017
 19424514 Summitcrest Erica 105X #Salt Creek Bob 7003
 #Summitcrest Erica 359P

ACT BW/RATIO
72 / 92
ADJ WW/RATIO
682 / 109

CED	BEPD	WEPD	YEPD	SC	DOC	MILK	\$EN
+3 75%	+1.2 50%	+82 10%	+140 10%	+1.32 25%	+12 80%	+34 10%	-37 95%
CW	MARB	RE	FAT	\$M	\$W	\$B	\$C
+67 10%	+62 50%	+74 35%	+009 45%	+56 70%	+85 2%	+150 35%	+251 40%

This is a high performing Bomber son from a really nice Payweight cow that weaned him at nearly 700#. She has 3@100 for WW and 1@136 for IMF. His grand dam is recognized for all the beautiful females that she has produced for us over her time in the donor pen.

LOT 70 D A R LEUPOLD 2416

BIRTH DATE: 02-11-2022 BULL: 20570634 TATTOO: 2416
 #*A A R Leupold 0578 #*A A R Ten X 7008 S A
 #*GDAR LEUPOLD 298 #*A A R Ankonian 4015
 17228402 #GDAR Miss Blackcap 9232 #GDAR Justice 622
 ANGUS #GDAR Miss Blackcap 556
 #MOGCK Entice SydGen Enhance
 D A R RITA 0054 #*MOGCK Erica 2255
 20570015 D A R Rita R741 #Deer Valley Coal Train 41157
 #D A R Rita 0424

ACT BW/RATIO
90 / 123
ADJ WW/RATIO
587 / 103

CED	BEPD	WEPD	YEPD	SC	DOC	MILK	\$EN
+1 90%	+3.2 90%	+85 4%	+148 5%	+69 65%	+20 45%	+27 45%	-43 95%
CW	MARB	RE	FAT	\$M	\$W	\$B	\$C
+81 2%	+42 75%	+68 40%	-019 15%	+53 80%	+73 15%	+169 15%	+272 25%

This Leupold son is one of the top performance bulls of the offering with his +148 YW EPD. He should produce a great set of feeder calves.



MEAD MAGNITUDE - Sire of Lot 67

LOT 71 D A R FLAGSTONE 2400

BIRTH DATE: 02-15-2022 BULL: 20501289 TATTOO: 2400

+*Hoover No Doubt #*Mogck Bullseye
 +*BALDRIDGE FLAGSTONE F411 #*Miss Blackcap Ellston J2
 19478642 *Baldridge Isabel Y69 #*Styles Upgrade J59
 +Baldridge Isabel T935

ANGUS

#*S A V Raindance 6848

#*Coleman Charlo 0256

+D A R RITA T958

*S A V Blackcap May 4136

20337825 +*Hedgewood Rita 301

#*Connealy Capitalist 028

+Hedgewood Rita 321

ACT BW/RATIO

70 / 92

ADJ WW/RATIO

596 / 96

CED	BEPD	WEPD	YEPD	SC	DOC	MILK	\$EN
+9 30%	+5 35%	+66 35%	+118 35%	+69 65%	+14 70%	+24 70%	-12 40%
CW	MARB	RE	FAT	\$M	\$W	\$B	\$C
+48 50%	+15 95%	+63 50%	-.008 25%	+75 20%	+65 30%	+119 75%	+229 65%

This is an attractive Flagstone son from a phenotypic standpoint. He's got all the attributes to make a great heifer bull to sire the good look. Good bull that stems back to the dam of D A R Midnight 6050.



D A R FLAGSTONE 2400 - Lot 71



BALDRIDGE FLAGSTONE F411 - Sire of Lots 71, 73 and 74.

LOT 74 D A R FLAGSTONE 2398

BIRTH DATE: 02-19-2022 BULL: *20501335 TATTOO: 2398

+*Hoover No Doubt #*Mogck Bullseye
 +*BALDRIDGE FLAGSTONE F411 #*Miss Blackcap Ellston J2
 19478642 *Baldridge Isabel Y69 #*Styles Upgrade J59
 +Baldridge Isabel T935

ANGUS

8N Upstart 102

#*Sitz Upward 307R

#D A R MS UPSTART N832

C C A Blackcap 803

17588559 +BJ Objective 1076

#*S S Objective T510 OT26

+BJ Predestined 7041

ACT BW/RATIO

80 / 100

ADJ WW/RATIO

523 / 100

CED	BEPD	WEPD	YEPD	SC	DOC	MILK	\$EN
+10 20%	-.4 20%	+72 20%	+122 30%	+54 75%	+26 15%	+31 20%	-2 15%
CW	MARB	RE	FAT	\$M	\$W	\$B	\$C
+43 65%	+90 25%	+77 30%	-.012 20%	+101 1%	+83 3%	+140 50%	+283 15%

A calving ease son by Baldridge Flagstone. He is one the highest Marbling and \$Maternal Bulls in the sale. His Pathfinder dam, Ms Upstart N832, remains in the donor pen today. Take a look at an impressive nursing ratio of 7@108. She knocks it out of the park every year. Maternal Sister is the LOT 102 female in this offering. Flushmate to Lots 18, 19, 20, 73. Heifer Bull.

LOT 72 D A R BOURBON STREET 2363

BIRTH DATE: 03-09-2022 BULL: 20465824 TATTOO: 2363

+*Deer Valley Wall Street #*Basin Payweight 1682
 +*S S BOURBON STREET H111 #*Deer Valley Rita 36113
 19816141 *Jet S S C58 #*Connealy Black Granite
 *Jet S S A99

ANGUS

Molitor Hoover Dam 008-112

#*Hoover Dam

MOLITOR 112 BLKBIRD 156-5012

Molitor InF Princess 658-008

18378852 Molitor Pen Bkbrd 8028-156

#HARB Pendleton 765 J H

Molitor InF Bkbrd 5028-8028

ACT BW/RATIO

80 / 101

ADJ WW/RATIO

621 / 100

CED	BEPD	WEPD	YEPD	SC	DOC	MILK	\$EN
+14 4%	-.14 10%	+68 30%	+125 25%	+19 90%	+7 90%	+31 20%	-15 45%
CW	MARB	RE	FAT	\$M	\$W	\$B	\$C
+58 25%	+17 95%	+69 40%	+029 75%	+65 45%	+75 10%	+132 60%	+236 60%

This is a sleep all night heifer bull with added performance. His sire, Bourbon Street, was the 2021 Midland Bull Test winner, where WW, YW, ADG, and feed efficiency are averaged to determine the final index. His dam has been consistent every year as she's raised 6@100. Heifer Bull.

LOT 73 D A R FLAGSTONE 2397

BIRTH DATE: 02-27-2022 BULL: *20501334 TATTOO: 2397

+*Hoover No Doubt #*Mogck Bullseye
 +*BALDRIDGE FLAGSTONE F411 #*Miss Blackcap Ellston J2
 19478642 *Baldridge Isabel Y69 #*Styles Upgrade J59
 +Baldridge Isabel T935

ANGUS

8N Upstart 102

#*Sitz Upward 307R

#D A R MS UPSTART N832

C C A Blackcap 803

17588559 +BJ Objective 1076

#*S S Objective T510 OT26

+BJ Predestined 7041

ACT BW/RATIO

84 / 100

ADJ WW/RATIO

597 / 100

CED	BEPD	WEPD	YEPD	SC	DOC	MILK	\$EN
+2 85%	+2.6 80%	+69 30%	+121 30%	+51 75%	+27 15%	+33 15%	-17 50%
CW	MARB	RE	FAT	\$M	\$W	\$B	\$C
+45 60%	+70 40%	+65 45%	+024 70%	+85 5%	+71 15%	+128 65%	+251 40%

Another performance bull from the Flagstone x N832 mating. He's going to be one of the highest foot score bulls in the offering. His dam has a nursing ratio of 7@108. Flushmate to Lots 18, 19, 20 & 74. His Maternal Sister sells at Lot 102.

LOT 75 D A R AVIATOR 2448

BIRTH DATE: 03-15-2022 BULL: 20467611 TATTOO: 2448

#*Musgrave Aviator #*Koupals B&B Identity
 *BLUEGRASS AVIATOR 700 MCATL Forever Lady 1429-138
 18880634 Bluegrass Bonny 539 001 #*K C F Bennett Absolute
 +Bluegrass Bonny 001 900

ANGUS

Molitor Danny Boy 686-1138

#Connealy Danny Boy

MOLITOR 1138 POLLY 279-549

#Molitor 4004 Flame 334-686

18362951 Molitor 534 Polly 056-279

#CAR Efficient 534

Molitor FA Polly 876-056

ACT BW/RATIO

90 / 114

ADJ WW/RATIO

663 / 106

CED	BEPD	WEPD	YEPD	SC	DOC	MILK	\$EN
+6 55%	+9 45%	+75 15%	+122 30%	+70 65%	+22 35%	+26 50%	-37 95%
CW	MARB	RE	FAT	\$M	\$W	\$B	\$C
+52 40%	+45 70%	+60 55%	+014 55%	+60 60%	+71 15%	+137 55%	+238 55%

This is a really cool Aviator son that is a calving ease bull. His dam has raised 6@100 for WW Ratio. Outcross Pedigree. Heifer Bull.



D A R AVIATOR 2448 - Lot 75

DIX ANGUS RANCH



D A R SOLOMON VALLEY 2441 - Lot 76

LOT 76 D A R SOLOMON VALLEY 2441

BIRTH DATE: 03-09-2022 BULL: 20465837 TATT00: 2441

D A R Hoover Dam N944 #*Hoover Dam
DAR CDPprimroseF310 IE79 K362
19647946 D A R Rita M739 #*Styles Upgrade J59
DAR JD Rita I978

ANGUS GS

#*S Whitlock 179

D A R BLACKCAP T968

19652268 DAR Blackcap M742

#*S Chisum 6175

#S Pride Anna 709

DAR JD Confidence GB58

DAR JD BlkcapJ239 C810 J165

ACT BW/RATIO
94 / 123
ADJ WW/RATIO
668 / 107

CED	BEPD	WEPD	YEPD	SC	DOC	MILK	\$EN
+2 85%	+1.6 60%	+80 10%	+145 10%	+48 75%	+33 2%	+26 50%	-39 95%
CW	MARB	RE	FAT	\$M	\$W	\$B	\$C
+71 10%	+22 90%	+74 35%	-.007 25%	+62 55%	+71 15%	+152 30%	+259 35%

The lead-off Solomon Valley son in this offering that could've easily been much earlier in the lineup. This is one of the highest gaining bulls in the sale. His Whitlock dam has turned in 2@109 for weaning weight in a 359 day interval. Good High Performance Bull.

LOT 77 D A R SOLOMON VALLEY 2438

BIRTH DATE: 03-07-2022 BULL: 20533562 TATT00: 2438

D A R Hoover Dam N944 #*Hoover Dam
DAR CDPprimroseF310 IE79 K362
19647946 D A R Rita M739 #*Styles Upgrade J59
DAR JD Rita I978

ANGUS GS

*Ellingson Homestead 6030

D A R LADY T942

20259279 Molitor 3878 Lady 353-656

#*CTS Remedy 1T01

EA Erica 1082

HA Outside 3878

Molitor FA Lady 905-353

ACT BW/RATIO
78 / 100
ADJ WW/RATIO
655 / 100

CED	BEPD	WEPD	YEPD	SC	DOC	MILK	\$EN
-6 95%	+2.7 85%	+70 25%	+120 35%	-.17 95%	+38 1%	+20 90%	-20 60%
CW	MARB	RE	FAT	\$M	\$W	\$B	\$C
+52 40%	+1.12 10%	+70 40%	+0.64 95%	+64 50%	+58 50%	+169 15%	+283 15%

This Solomon Valley son is one of the highest Marbling bulls of the day. He's also one of most docile bulls in the pen. His Horsepower dam and a very well balanced udder and his Grand dam is one of the most prolific cows to walk our pastures.

LOT 78 D A R SOLOMON VALLEY 2442

BIRTH DATE: 03-09-2022 BULL: 20465838 TATT00: 2442

D A R Hoover Dam N944 #*Hoover Dam
DAR CDPprimroseF310 IE79 K362
19647946 D A R Rita M739 #*Styles Upgrade J59
DAR JD Rita I978

ANGUS GS

HARB Horsepower 561 JH

D A R STORMY T947

19651466 #D A R Ms Upstart N832

#+*PA Power Tool 9108

#HARB Frances 770 JH

8N Upstart 102

+BJ Objective 1076

ACT BW/RATIO
90 / 118
ADJ WW/RATIO
664 / 106

CED	BEPD	WEPD	YEPD	SC	DOC	MILK	\$EN
-3 95%	+5.8 95%	+72 20%	+133 15%	+24 90%	+22 35%	+31 20%	-18 55%
CW	MARB	RE	FAT	\$M	\$W	\$B	\$C
+58 25%	+74 35%	+77 30%	-.014 20%	+66 40%	+60 40%	+166 20%	+281 15%

This bull goes back to the very good donor cow, N832. She's the dam of the highlight, Flagstone sons in this offering as well as the superb lead off female. A Solomon Valley son that has a great look from the profile few and is just as impressive from behind. Don't miss out on a maternally bred performance bull here.



D A R SOLOMON VALLEY 2442 - Lot 78

DIX ANGUS RANCH



D A R COWBOY UP 2410 - Lot 79

LOT 79 D A R COWBOY UP 2410
 BIRTH DATE: 02-13-2022 BULL: *20465825 TATTOO: 2410

*HA Outside 3008 *KG Solution 0018
 #*HA Cowboy Up 5405 *HA Ever Lady 1575
 18286467 #*HA Blackcap Lady 1602 #Sitz Upward 307R
 HA Blackcap Lady 5515

ANGUS ***EXAR Upshot 0562B** #Sitz Upward 307R
 #*D A R MS UPSHOT N842 #EXAR Barbara T020
 17613885 +*44 Ms New Design 8051 #S S Objective T510 OT26
 +G A R 1407 New Design L194

CED	BEPD	WEPD	YEPD	SC	DOC	MILK	\$EN
+6 55%	+3.2 90%	+71 25%	+123 30%	+89 50%	+10 85%	+19 95%	-12 40%
CW	MARB	RE	FAT	\$M	\$W	\$B	\$C
+38 75%	+38 75%	+39 85%	-022 15%	+64 50%	+58 50%	+117 80%	+216 75%

ACT BW/RATIO 90 / 100
 ADJ WW/RATIO 613 / 100

CED	BEPD	WEPD	YEPD	SC	DOC	MILK	\$EN
+6 55%	+3.2 90%	+71 25%	+123 30%	+89 50%	+10 85%	+19 95%	-12 40%
CW	MARB	RE	FAT	\$M	\$W	\$B	\$C
+38 75%	+38 75%	+39 85%	-022 15%	+64 50%	+58 50%	+117 80%	+216 75%

A Cowboy Up son from a former donor in our ET program that was a favorite of many visitors in her day. Superb udder on her and she raised 4@113 at Weaning and had 25@107 for IMF. Good Bull. Flush brother to lot 80.

LOT 80 D A R COWBOY UP 2411
 BIRTH DATE: 02-14-2022 BULL: *20465826 TATTOO: 2411

*HA Outside 3008 *KG Solution 0018
 #*HA Cowboy Up 5405 *HA Ever Lady 1575
 18286467 #*HA Blackcap Lady 1602 #Sitz Upward 307R
 HA Blackcap Lady 5515

ANGUS ***EXAR Upshot 0562B** #Sitz Upward 307R
 #*D A R MS UPSHOT N842 #EXAR Barbara T020
 17613885 +*44 Ms New Design 8051 #S S Objective T510 OT26
 +G A R 1407 New Design L194

CED	BEPD	WEPD	YEPD	SC	DOC	MILK	\$EN
+2 85%	+3.1 90%	+76 15%	+128 20%	+1.19 30%	+10 85%	+22 80%	-14 45%
CW	MARB	RE	FAT	\$M	\$W	\$B	\$C
+37 75%	+51 65%	+36 85%	-021 15%	+69 35%	+67 25%	+117 80%	+221 75%

ACT BW/RATIO 85 / 100
 ADJ WW/RATIO 581 / 100

CED	BEPD	WEPD	YEPD	SC	DOC	MILK	\$EN
+2 85%	+3.1 90%	+76 15%	+128 20%	+1.19 30%	+10 85%	+22 80%	-14 45%
CW	MARB	RE	FAT	\$M	\$W	\$B	\$C
+37 75%	+51 65%	+36 85%	-021 15%	+69 35%	+67 25%	+117 80%	+221 75%

The other Cowboy Up son in this offering from the great N842 donor. He's bound to produce some very nice females in his future and the type of steers calves that push the scale down. Flush Brother to Lot 79.

LOT 81 D A R GUNSLINGER 2424
 BIRTH DATE: 03-17-2022 BULL: *20527481 TATTOO: 2424

*L/R Colt 45 3045 S/C Medicine Man 01Y7
 #*D A R GUNSLINGER R177 #Summitcrest Blizzard 0X62
 18965558 Summitcrest Elba 1Y90 #Summitcrest Complete 1P55
 Summitcrest Elba 0K96

ANGUS **#LD Emblazon 999** #+O C C Emblazon 854E
 #*D A R MAXINE P104 #+SH Forever Lady 3124 5118
 18244844 #D A R Ms Upgrade N834 #*Styles Upgrade J59
 +BJ Objective 8212

CED	BEPD	WEPD	YEPD	SC	DOC	MILK	\$EN
+7 45%	+8 40%	+62 50%	+118 35%	+1.37 20%	+24 25%	+27 45%	-13 40%
CW	MARB	RE	FAT	\$M	\$W	\$B	\$C
+43 65%	+58 55%	+49 70%	+0 35%	+76 20%	+62 35%	+132 60%	+247 45%

ACT BW/RATIO 80 / 100
 ADJ WW/RATIO 607 / 100

CED	BEPD	WEPD	YEPD	SC	DOC	MILK	\$EN
+7 45%	+8 40%	+62 50%	+118 35%	+1.37 20%	+24 25%	+27 45%	-13 40%
CW	MARB	RE	FAT	\$M	\$W	\$B	\$C
+43 65%	+58 55%	+49 70%	+0 35%	+76 20%	+62 35%	+132 60%	+247 45%

A Calving-ease bull by Gunslinger and the Maxine P104 donor. Easy fleshing ability is expected to be transmitted as the sire and dam could "gain weight on air". Heifer Bull.

LOT 82 D A R GUNSLINGER 2433
 BIRTH DATE: 03-22-2022 BULL: *20468730 TATTOO: 2433

*L/R Colt 45 3045 S/C Medicine Man 01Y7
 #*D A R GUNSLINGER R177 #Summitcrest Blizzard 0X62
 18965558 Summitcrest Elba 1Y90 #*Summitcrest Complete 1P55
 Summitcrest Elba 0K96

ANGUS **#+*Basin Payweight 1682** #*Basin Payweight 0065
 #*D A R ERICA S861 21AR O Lass 7017
 19424499 Summitcrest Erica 105X #Salt Creek Bob 7003
 #Summitcrest Erica 359P

CED	BEPD	WEPD	YEPD	SC	DOC	MILK	\$EN
+13 10%	-8 15%	+63 45%	+117 35%	+1.70 10%	+26 15%	+25 60%	-12 40%
CW	MARB	RE	FAT	\$M	\$W	\$B	\$C
+49 50%	+19 90%	+48 75%	+030 75%	+52 80%	+63 35%	+123 70%	+212 80%

ACT BW/RATIO 68 / 87
 ADJ WW/RATIO 599 / 96

CED	BEPD	WEPD	YEPD	SC	DOC	MILK	\$EN
+13 10%	-8 15%	+63 45%	+117 35%	+1.70 10%	+26 15%	+25 60%	-12 40%
CW	MARB	RE	FAT	\$M	\$W	\$B	\$C
+49 50%	+19 90%	+48 75%	+030 75%	+52 80%	+63 35%	+123 70%	+212 80%

The dam of Lot 82, Erica S861, is a flushmate of the popular set of flush brothers from our inaugural sale. This Payweight daughter has produced 3@101 for WW, 2@105 YW, 2@111 IMF, and 2@104 RE. Good Heifer Bull.

LOT 83 D A R GUNSLINGER 2423
 BIRTH DATE: 03-16-2022 BULL: *20527483 TATTOO: 2423

*L/R Colt 45 3045 S/C Medicine Man 01Y7
 #*D A R GUNSLINGER R177 #Summitcrest Blizzard 0X62
 18965558 Summitcrest Elba 1Y90 #*Summitcrest Complete 1P55
 Summitcrest Elba 0K96

ANGUS **#*Connealy Consensus 7229** #*Connealy Consensus
 #HARB PRINCESS VEL Z88 JH Blue Lilly of Conanga 16
 17456565 #+HARB Princess Vel 980 JH #*Connealy Onward
 #H A R B Princess Vel 36 J H

CED	BEPD	WEPD	YEPD	SC	DOC	MILK	\$EN
+16 1%	-2.0 4%	+56 65%	+107 55%	+1.15 35%	+29 10%	+32 15%	-15 45%
CW	MARB	RE	FAT	\$M	\$W	\$B	\$C
+37 75%	+29 85%	+34 90%	+037 85%	+73 25%	+64 30%	+107 90%	+212 80%

ACT BW/RATIO 78 / 95
 ADJ WW/RATIO 629 / 98

CED	BEPD	WEPD	YEPD	SC	DOC	MILK	\$EN
+16 1%	-2.0 4%	+56 65%	+107 55%	+1.15 35%	+29 10%	+32 15%	-15 45%
CW	MARB	RE	FAT	\$M	\$W	\$B	\$C
+37 75%	+29 85%	+34 90%	+037 85%	+73 25%	+64 30%	+107 90%	+212 80%

Sure Fire Gunslinger Heifer bull from the great Z88 donor, who produced Propel. This bull combines one of the highest CEDs and Low BWs combinations in the entire offering. Heifer Bull.

LOT 84 D A R MIDNIGHT 2465
 BIRTH DATE: 03-29-2022 BULL: *20467600 TATTOO: 2465

*D A R Midnight 6050 #*Connealy Black Granite
 #*D A R MIDNIGHT T008 #Hedgewood Rita 301
 19563209 #D A R Velda Q638 #*KG Solution 0018
 #DAR JD Velda IF21

ANGUS ***Gardens Prime Star KB20** #*Gardens Prime Star
 #D A R FLAMMETTE 0453 Green Garden Anna FB20
 17978566 #DAR CD Flame 0035 C047 J197 #*S A V Final Answer 0035
 Molitor Wn Flamette 608-2047

CED	BEPD	WEPD	YEPD	SC	DOC	MILK	\$EN
+1 90%	+1.1 50%	+66 35%	+116 40%	+1.17 30%	+18 55%	+34 10%	-13 40%
CW	MARB	RE	FAT	\$M	\$W	\$B	\$C
+53 40%	+78 35%	+88 15%	+028 75%	+79 15%	+74 10%	+157 50%	+283 15%

ACT BW/RATIO 84 / 106
 ADJ WW/RATIO 704 / 113

CED	BEPD	WEPD	YEPD	SC	DOC	MILK	\$EN
+1 90%	+1.1 50%	+66 35%	+116 40%	+1.17 30%	+18 55%	+34 10%	-13 40%
CW	MARB	RE	FAT	\$M	\$W	\$B	\$C
+53 40%	+78 35%	+88 15%	+028 75%	+79 15%	+74 10%	+157 50%	+283 15%

This Midnight son eclipsed the 700# weaning weight mark. His Pathfinder dam is as consistent as they come as she's produced 5@107 WW, 4@103 YW, 4@110 IMF, 4@110 RE. A larger framed bull that will flat add performance.

LOT 85 D A R COMPLETE 2370
 BIRTH DATE: 02-24-2022 BULL: *20465832 TATTOO: 2370

#*EF Complement 8088 #Basin Franchise P142
 #*WOODHILL COMPLETE A130-C2 #EF Everelda Intense 6117
 18248948 #Woodhill Evergreen U181-A130 #*Hoover Dam
 Woodhill Evergreen R53-U181

ANGUS **#+TC Grid Topper 355** #+*G A R Grid Maker
 #HARB BLACK LADY 688 JH #TC Pride 8067
 15486104 #H A R B Black Lady 073 J H #H A R B Cincha 829
 H A R B Black Lady G67 J H

CED	BEPD	WEPD	YEPD	SC	DOC	MILK	\$EN
+7 45%	+2.5 80%	+69 30%	+123 30%	+1.01 40%	+23 30%	+35 10%	-21 65%
CW	MARB	RE	FAT	\$M	\$W	\$B	\$C
+44 60%	+41 75%	+55 65%	+021 65%	+79 15%	+71 15%	+114 85%	+227 65%

ACT BW/RATIO 90 / 100
 ADJ WW/RATIO 611 / 100

CED	BEPD	WEPD	YEPD	SC	DOC	MILK	\$EN
+7 45%	+2.5 80%	+69 30%	+123 30%	+1.01 40%	+23 30%	+35 10%	-21 65%
CW	MARB	RE	FAT	\$M	\$W	\$B	\$C
+44 60%	+41 75%	+55 65%	+021 65%	+79 15%	+71 15%	+114 85%	+227 65%

This larger outlined Complete son is from the 688 donor cow that has produced some really good ones for us, including the Lot 1 bull in our inaugural sale. She's raised 11@106 for WW in a 366 day calving interval.

DIX ANGUS RANCH



Carcass Ultrasound day with Dr. Paul Ritter, Monument Station Ultrasound. All of the Bulls and registered heifers that we sell and keep are ultrasound each year. Emerson is learning the ropes.

LOT 88 D A R STOCKTON 2309

BIRTH DATE: 02-14-2022 BULL: 20465822 TATTOO: 2309
 #*Spring Cove Reno 4021 #*KM Broken Bow 002
 #*D A R STOCKTON 0101 #*Spring Cove Liza 021
 19961784 #*HARB Princess Vel 980 JH #*Connealy Onward
 #H A R B Princess Vel 36 J H
 #*LD Capitalist 316 #*Connealy Capitalist 028
 D A R FOREVER LADY T929 LD Dixie Erica 2053
 19651453 D A R Forever Lady Q686 *HARB Hindquarter 473 JH
 D A R Forever Lady O480

ACT BW/RATIO
84 / 110
ADJ WW/RATIO
583 / 93

CED	BEPD	WEPD	YEPD	SC	DOC	MILK	\$EN
+8 35%	+2.6 80%	+70 25%	+120 35%	+1.32 25%	+24 25%	+31 20%	-26 75%
CW	MARB	RE	FAT	\$M	\$W	\$B	\$C
+54 35%	+69 45%	+39 85%	+0.22 65%	+87 4%	+68 25%	+140 50%	+269 25%

The first Stockton son available. This bull is bred 3 generations deep from the BEEF-360 exclusive sire line-up, Stockton x Capitalist 316 x Hindquarter. He should make some phenomenal females.



D A R STOCKTON 2309 - Lot 88

LOT 89 D A R STOCKTON 2312

BIRTH DATE: 03-06-2022 BULL: *20468714 TATTOO: 2312
 #*Spring Cove Reno 4021 #*KM Broken Bow 002
 #*D A R STOCKTON 0101 #*Spring Cove Liza 021
 19961784 #*HARB Princess Vel 980 JH #*Connealy Onward
 #H A R B Princess Vel 36 J H
 #*LD Emblazon 999 #*O C C Emblazon 854E
 D A R IRENE Q661 #*SH Forever Lady 3124 5118
 18588056 +D A R Irene N802 #*Styles Upgrade J59
 #Molitor 2720 Irene 9025-1047

ACT BW/RATIO
92 / 116
ADJ WW/RATIO
621 / 100

CED	BEPD	WEPD	YEPD	SC	DOC	MILK	\$EN
+6 55%	+2.7 85%	+64 45%	+111 50%	+99 45%	+22 35%	+27 45%	-16 50%
CW	MARB	RE	FAT	\$M	\$W	\$B	\$C
+45 60%	+40 75%	+75 30%	-0.039 3%	+81 10%	+60 40%	+126 70%	+244 50%

D A R Stockton 2312 is one of the highest HP bulls in the sale. He's big scaled that will make high performance calves that add weight to the scale at weaning time.



D A R STOCKTON 0101 - Sire of Lots 88 and 89.

LOT 86 D A R COMPLETE 2368

BIRTH DATE: 03-09-2022 BULL: *20465831 TATTOO: 2368
 #*EF Complement 8088 #Basin Franchise P142
 #WOODHILL COMPLETE A130-C2 +EF Everelda Entense 6117
 18248948 #Woodhill Evergreen U181-A130 #*Hoover Dam
 Woodhill Evergreen R53-U181
 #S A V Mustang 9134 #*S A V Final Answer 0035
 #HARB MERICA 273 JH #S A V Emblynette 7415
 18029948 HARB Madeline Erica 189 JH #H A R B Cincha 829
 HARB Madeline Erica 887 JH

ACT BW/RATIO
88 / 106
ADJ WW/RATIO
666 / 104

CED	BEPD	WEPD	YEPD	SC	DOC	MILK	\$EN
+8 35%	+2.1 70%	+77 15%	+130 20%	+85 55%	+8 90%	+31 20%	-29 85%
CW	MARB	RE	FAT	\$M	\$W	\$B	\$C
+53 40%	+81 30%	+57 60%	+0.61 95%	+69 35%	+76 10%	+145 40%	+257 35%

Another big bodied Woodhill Complete son, this time from the 273 donor by Mustang. A good outcross pedigree for our program. 273 has produced 6@108 WW, 4@108 YW, 4@121 IMF, 4@108 RE. Flush Brother to Lot 87



D A R COMPLETE 2365 - Lot 87

LOT 87 D A R COMPLETE 2365

BIRTH DATE: 03-12-2022 BULL: *20465829 TATTOO: 2365
 #*EF Complement 8088 #Basin Franchise P142
 #WOODHILL COMPLETE A130-C2 +EF Everelda Entense 6117
 18248948 #Woodhill Evergreen U181-A130 #*Hoover Dam
 Woodhill Evergreen R53-U181
 #S A V Mustang 9134 #*S A V Final Answer 0035
 #HARB MERICA 273 JH #S A V Emblynette 7415
 18029948 HARB Madeline Erica 189 JH #H A R B Cincha 829
 HARB Madeline Erica 887 JH

ACT BW/RATIO
82 / 100
ADJ WW/RATIO
754 / 100

CED	BEPD	WEPD	YEPD	SC	DOC	MILK	\$EN
+5 60%	+2.6 80%	+85 4%	+135 15%	+1.71 10%	+15 65%	+21 85%	-35 90%
CW	MARB	RE	FAT	\$M	\$W	\$B	\$C
+55 35%	+39 75%	+67 45%	+0.27 70%	+64 50%	+73 15%	+123 70%	+224 70%

A Flushmate to Lot 86. This Complete son weaned off at 754#. A Real performance bull in the making. His dam has the records to back it up on the maternal side. 273 has produced 6@108 WW, 4@108 YW, 4@121 IMF, 4@108 RE.

DIX ANGUS RANCH

LOT 90 D A R MIDNIGHT 2464

BIRTH DATE: 03-29-2022 BULL: 20527485 TATTOO: 2464
 +*D A R Midnight 6050 #*Connealy Black Granite
 #*D A R MIDNIGHT T008 +*Hedgewood Rita 301
 19532309 #*D A R Velda Q638 #*KG Solution 0018
 #DAR JD Velda IF21
 #HF Prowler 43U HF Kodiak 5R
 HARB JERICA B81 JH HF Rosebud 98P
 18046772 HARB JERICA 871 JH #H A R B Windy 702 JH
 H A R B Juanada Erica 582 JH

CED	BEPD	WEPD	YEPD	SC	DOC	MILK	\$EN
+9 30%	+0 25%	+73 20%	+131 20%	-08 95%	+33 2%	+30 25%	-28 80%
CW	MARB	RE	FAT	\$M	\$W	\$B	\$C
+57 30%	+41 75%	+67 45%	-004 30%	+82 10%	+74 10%	+144 45%	+269 25%

This Midnight is bound to add pounds to the scale at weaning time. Added Length and tremendous depth. Top 4% for HP. Attractive Heifer Bull.

LOT 91 D A R JAMESON 2328

BIRTH DATE: 03-03-2022 BULL: *20473946 TATTOO: 2328
 #21AR Packer 4313 #Connealy Packer 547
 #PYRAMID JAMESON 9212 21AR Estrada 9032
 19675327 McLennan Lady Blue 347 Pyramid 8186 0221
 #Summit Lady Blue 782
 #*LD Capitalist 316 #*Connealy Capitalist 028
 #D A R RITA S888 LD Dixie Erica 2053
 19421901 +*D A R Rita Q623 #*A R Ten X 7008 S A
 +*Hedgewood Rita 137

CED	BEPD	WEPD	YEPD	SC	DOC	MILK	\$EN
-4 95%	+4.7 95%	+83 5%	+134 15%	+83 55%	+18 55%	+18 95%	-12 40%
CW	MARB	RE	FAT	\$M	\$W	\$B	\$C
+73 5%	+83 30%	+91 15%	+040 85%	+70 30%	+65 30%	+182 10%	+306 5%

This son by Jameson is an absolute stud. His dams Nursing ratio is 3@102. He is a power packed, wide based bull late in the sale that will have plenty of friends. He's one of the high \$C bulls in the sale. Don't miss a great one late.



D A R JAMESON 2328 - Lot 91

LOT 92 D A R JAMESON 2343

BIRTH DATE: 02-25-2022 BULL: 20473960 TATTOO: 2343
 #21AR Packer 4313 #Connealy Packer 547
 #PYRAMID JAMESON 9212 21AR Estrada 9032
 19675327 McLennan Lady Blue 347 Pyramid 8186 0221
 #Summit Lady Blue 782
 #HARB Hindquarter 473 JH +HARB Stur-D 191 JH
 #D A R PRIDE Q693 #*HARB Princess Vel 980 JH
 18728723 D A R Pride O449 #*Jindra Double Vision
 DAR CD Pride E242 D331 J192

CED	BEPD	WEPD	YEPD	SC	DOC	MILK	\$EN
+9 30%	+2.0 70%	+68 30%	+115 40%	+90 50%	+18 55%	+24 70%	-14 45%
CW	MARB	RE	FAT	\$M	\$W	\$B	\$C
+36 80%	+43 70%	+43 80%	+049 95%	+57 70%	+64 30%	+98 95%	+184 95%

Another stout made Jameson son, this from a Hindquarter dam that makes one of the thickest bulls at any sale we have. Maternal brothers have sold to Kyle Zimmerman, Schoenchen, Ks. And to Chad Schoenthaler, Wakeeney, Ks. Good Bull.



D A R COMMERCE 2353 - Lot 93

LOT 93 D A R COMMERCE 2353

BIRTH DATE: 03-16-2022 BULL: *20495822 TATTOO: 2353
 #Sitz Invasion 574D #*Connealy Conquest
 #SITZ COMMERCE 670F #Sitz Supremama 173Z
 19078171 #*Sitz Pride 101D #*Mohnen Substantial 272
 Sitz Pride 49B
 HARB JH High Life 567 #*V A R Reserve 1111
 D A R PRINCESS VEL S816 HARB Wendy 678 JH
 19314357 HARB Princess Vel A66 JH *TC Forthright 9284
 #+HARB Princess Vel 980 JH

CED	BEPD	WEPD	YEPD	SC	DOC	MILK	\$EN
+7 45%	+2.2 75%	+72 20%	+121 30%	+94 45%	+34 1%	+26 50%	-33 90%
CW	MARB	RE	FAT	\$M	\$W	\$B	\$C
+40 70%	+55 60%	+51 70%	+022 65%	+72 25%	+65 30%	+109 90%	+213 80%

A high scoring bull for Docility and top end HP EPD from this Sitz Commerce son. His dam by High Life is a grand daughter of Princess Vel 980 and has turned in 3@108 for WW.

LOT 94 D A R COMMERCE 2352

BIRTH DATE: 03-01-2022 BULL: *20495820 TATTOO: 2352
 #Sitz Invasion 574D #*Connealy Conquest
 #SITZ COMMERCE 670F #Sitz Supremama 173Z
 19078171 #*Sitz Pride 101D #*Mohnen Substantial 272
 Sitz Pride 49B
 #*GDAR Leupold 298 #*A A R Leupold 0578
 #D A R ERICA S828 #GDAR Miss Blackcap 9232
 19347808 Summitcrest Erica 105X #Salt Creek Bob 7003
 #Summitcrest Erica 359P

CED	BEPD	WEPD	YEPD	SC	DOC	MILK	\$EN
+3 75%	+3.0 85%	+79 10%	+129 20%	+1.01 40%	+26 15%	+25 60%	-27 80%
CW	MARB	RE	FAT	\$M	\$W	\$B	\$C
+42 65%	+54 60%	+38 85%	+041 85%	+76 20%	+70 20%	+110 85%	+219 75%

Another good Commerce son. His dam by Leupold has weaned 3 calves for an average Nursing Ratio of 107 that has produced to really nice daughter that are in our herd today.

LOT 95 D A R PROPEL 2390

BIRTH DATE: 03-04-2022 BULL: *20461906 TATTOO: 2390
 #D A R Turbo R146 #*S A V Resource 1441
 #D A R PROPEL T085 #D A R Maxine P104
 19612156 #HARB Princess Vel Z88 JH #*Connealy Consensus 7229
 #+HARB Princess Vel 980 JH
 #*Ellingson Chaps 4095 #*S A V Resource 1441
 D A R PRIDE S851 #E A Blackcap 0360
 19347816 D A R Pride O449 #*Jindra Double Vision
 DAR CD Pride E242 D331 J192

CED	BEPD	WEPD	YEPD	SC	DOC	MILK	\$EN
+6 55%	+2.8 85%	+85 4%	+151 4%	+80 55%	+19 50%	+22 80%	-20 60%
CW	MARB	RE	FAT	\$M	\$W	\$B	\$C
+54 35%	+52 60%	+88 15%	+042 90%	+86 4%	+74 10%	+133 60%	+259 35%

WOW. A very good D A R Propel son that has been saved to the end of the sale. A top Performance bull that is one of the highest in the offering for \$ Maternal. His dam by Ellingson Chaps has produced 3@103 for WW. A maternal sister sold in last years sale to McClaren Angus, Fowler, Ks.

DIX ANGUS RANCH

LOT 96 D A R PROPEL 2349

BIRTH DATE: 01-27-2022 BULL: 20467607 TATT00: 2349

*D A R Turbo R146 #+S A V Resource 1441
 #D A R PROPEL T085 #D A R Maxine P104
 19612156 *HARB Princess Vel Z88 JH #*Connealy Consensus 7229
 #+HARB Princess Vel 980 JH

ANGUS POWERED BY IMPROVISED
 #MOLITOR 2053 PRIDE 2003-6005 #*Connealy Impression
 18378848 Molitor Conn Pride 044-2003 JMc Black Donna 5526 3342
 #+S A F Connection
 Molitor FA Pride 803-044

ACT BW/RATIO
64 / 81
ADJ WW/RATIO
546 / 88

CED	BEPD	WEPD	YEPD	SC	DOC	MILK	\$EN
+14 4%	-2.1 3%	+59 60%	+104 60%	+1.09 35%	+32 3%	+14 95%	+5 10%
CW	MARB	RE	FAT	\$M	\$W	\$B	\$C
+32 85%	+.78 35%	+.21 95%	+.006 45%	+.88 3%	+.54 60%	+125 70%	+250 45%

A sleep all night heifer bull by Propel with his double digit CED and - BW EPD. His Pathfinder dam has produce 6@99 in a 366 day calving interval. Heifer bull



D A R PROPEL T085 - Sire of Lot 96.

LOT 97 D A R COALITION 2302

BIRTH DATE: 02-24-2022 BULL: *20474337 TATT00: 2302

HF Syndicate 213Z #*Connealy Consensus 7229
 #U-2 COALITION 206C HF Miss Blackcap 27R
 18626847 U2 Erelite 109Z Young Dale Xclusive 25X
 U-2 Erelite 1X

ANGUS POWERED BY IMPROVISED
 #S A V Mustang 9134 #*S A V Final Answer 0035
 HARB MERICA 273 JH #S A V Emblynette 7415
 18029948 HARB Madeline Erica 189 JH #H A R B Cincha 829
 HARB Madeline Erica 887 JH

ACT BW/RATIO
78 / 94
ADJ WW/RATIO
583 / 91

CED	BEPD	WEPD	YEPD	SC	DOC	MILK	\$EN
+7 45%	+1.7 65%	+56 65%	+100 65%	+.89 50%	+25 20%	+24 70%	-17 50%
CW	MARB	RE	FAT	\$M	\$W	\$B	\$C
+40 70%	+.23 90%	+.62 50%	+.011 50%	+.61 55%	+.51 70%	+117 80%	+213 80%

A solid Coalition son backed by a great cow, Merica 273. She's produced 6@108 WW, 4@108 YW, 4@121 IMF, 4@108 RE. Flush brother to lot 52

LOT 100 D A R CAVALRY 2459

BIRTH DATE: 02-26-2022 BULL: 20467615 TATT00: 2459

#*Connealy Cavalry 1149 #*Connealy Consensus
 SVF CALVARY B323 +Brista of Conanga 927T
 18011449 SVF MS Answer Z87 #S A V Final Answer 0035
 SVF MS Los W343

ANGUS POWERED BY IMPROVISED
 HA Outside 3878 #*KG Solution 0018
 MOLITOR 3878 BARBELLA290-562 #+HA Blackcap Lady 1914
 18378830 Molitor 819 Barbella 946-290 HARB Efficient 819 JH
 #Molitor FA Barbella 516-946

ACT BW/RATIO
72 / 91
ADJ WW/RATIO
608 / 97

CED	BEPD	WEPD	YEPD	SC	DOC	MILK	\$EN
+16 1%	-2.7 2%	+47 90%	+82 90%	+.72 60%	+21 40%	+31 20%	+9 4%
CW	MARB	RE	FAT	\$M	\$W	\$B	\$C
+29 90%	+.78 35%	+.16 95%	+.082 95%	+.84 10%	+.64 30%	+118 80%	+237 55%

A Cavalry son that exhibits one of the highest CEDs and lowest BW EPDs of the offering. High \$ M bull as well Heifer Bull.

LOT 98 D A R GUNSLINGER 2341

BIRTH DATE: 03-06-2022 BULL: 20465823 TATT00: 2341

*L/R Colt 45 3045 S/C Medicine Man 01Y7
 #D A R GUNSLINGER R177 #Summitcrest Blizzard 0X62
 18965558 Summitcrest Elba 1Y90 #*Summitcrest Complete 1P55
 Summitcrest Elba 0K96

ANGUS POWERED BY IMPROVISED
 #+K C F Bennett Fortress #*Connealy Consensus
 D A R MAXINE S864 #Thomas Patricia 9705
 19412196 +*BJ 12E7 Rito 5258 +*Rito 12E7 of 5F56 Rito 5M2
 +*BJ Complete 1268

ACT BW/RATIO
84 / 108
ADJ WW/RATIO
607 / 97

CED	BEPD	WEPD	YEPD	SC	DOC	MILK	\$EN
+0 90%	+3.2 90%	+74 20%	+139 10%	+1.74 10%	+15 65%	+31 20%	-28 80%
CW	MARB	RE	FAT	\$M	\$W	\$B	\$C
+45 60%	+.69 45%	+.33 90%	+.014 55%	+.55 75%	+.67 25%	+130 65%	+224 70%

A high performance Gunslinger son by Maxine S864. Her progeny have been superior for IMF with a record of 2@129.

LOT 101 D A R CAVALRY 2461

BIRTH DATE: 02-26-2022 BULL: 20467616 TATT00: 2461

#*Connealy Cavalry 1149 #*Connealy Consensus
 SVF CALVARY B323 +Brista of Conanga 927T
 18011449 SVF MS Answer Z87 #S A V Final Answer 0035
 SVF MS Los W343

ANGUS POWERED BY IMPROVISED
 #+*Basin Payweight 1682 #+*Basin Payweight 0065
 MOLITOR 1682 JUANERRA329-527 21AR O Lass 7017
 18373547 #Molitor9132 Juanerra0123-329 #SVF Answer W132
 Molitor CN Juanerra 806-0123

ACT BW/RATIO
90 / 114
ADJ WW/RATIO
657 / 105

CED	BEPD	WEPD	YEPD	SC	DOC	MILK	\$EN
+10 20%	+1.1 50%	+67 35%	+124 25%	+2.11 2%	+24 25%	+30 25%	-24 70%
CW	MARB	RE	FAT	\$M	\$W	\$B	\$C
+54 35%	+.91 25%	+.31 90%	+.046 90%	+.61 55%	+.67 25%	+160 25%	+269 25%

Mr. Irrelevant this year is a Cavalry son that is near the top of the list for Marbling. He's a solid heifer bull prospect that carries a 105 WW Ratio as well. Heifer Bull.



D A R CAVALRY 2461 - Lot 101

LOT 99 D A R CAVALRY 2457

BIRTH DATE: 02-05-2022 BULL: 20467613 TATT00: 2457

#*Connealy Cavalry 1149 #*Connealy Consensus
 SVF CALVARY B323 +Brista of Conanga 927T
 18011449 SVF MS Answer Z87 #S A V Final Answer 0035
 SVF MS Los W343

ANGUS POWERED BY IMPROVISED
 HARB Efficient 819 JH #CAR Efficient 534
 MOLITOR 819 ALICE 0101-5025 #H A R B Wendy 072 J H
 18378859 Molitor 629 Alice 6016-0101 HCC Nebraska 629
 Molitor 1333 Alice 305-6016

ACT BW/RATIO
74 / 94
ADJ WW/RATIO
645 / 103

CED	BEPD	WEPD	YEPD	SC	DOC	MILK	\$EN
+10 20%	-.6 15%	+53 75%	+87 85%	+.50 75%	+20 45%	+28 35%	-12 40%
CW	MARB	RE	FAT	\$M	\$W	\$B	\$C
+43 65%	+.48 65%	+.21 95%	+.049 95%	+.61 55%	+.58 50%	+119 75%	+215 80%

This Cavalry son has all the makings of a great heifer bull. +10 CED -0.6 BW. His dam has weaned 4@99 in 366 day interval. Heifer bull.

DIX ANGUS RANCH



D A R BLACKCAP 2668 - Lot 102

LOT 102 D A R BLACKCAP 2668
BIRTH DATE: 01-16-2022 COW *20465858 TATTOO: 2668

+D A R Turbo R146 #+S A V Resource 1441
*D A R PROPEL T085 #D A R Maxine P104
19612156 *HARB Princess Vel Z88 JH #*Connealy Consensus 7229
#HARB Princess Vel 980 JH
8N Upstart 102 #*Sitz Upward 307R
#D A R MS UPSTART N832 C C A Blackcap 803
17588559 +BJ Objective 1076 #*S S Objective T510 OT26
+BJ Predestined 7041

ACT BW/RATIO
74 / 97
ADJ WW/RATIO
608 / 107

CED	BEPD	WEPD	YEPD	SC	DOC	MILK	\$EN
+3 80%	+2.9 85%	+85 4%	+148 4%	+69 60%	+28 10%	+23 75%	-27 80%
CW	MARB	RE	FAT	\$M	\$W	\$B	\$C
+59 25%	+64 55%	+72 40%	-010 25%	+68 35%	+73 10%	+146 40%	+257 35%

Blackcap 2668 is truly a female that doesn't come around very often. Take a walk around her and she is very hard to fault; She has tremendous length & depth of body, beautiful front end, added power and muscle from behind with exceptional soundness from the ground up. Her Pathfinder dam is currently a donor for us 7@108 for Nursing Ratio while having 5@104 for IMF. Her Grand dam, 1076, Weaned 6@104 and 4@118 for IMF ratio. A True Breeding piece sired by Propel. Her maternal brothers by Flagstone will be sale highlights as Lots 18, 19, 20. FUTURE DONOR COW



D A R WENDY 2624 - Lot 103

LOT 103 D A R WENDY 2624
BIRTH DATE: 02-16-2022 COW 20506973 TATTOO: 2624

#+*TEX Playbook 5437 #+*Basin Payweight 1682
*+BJ SURPASS #*Rita 1C43 of 9M26 Complete
19774516 #*BJ Prophet 5275 #+*G A R Prophet
#*BJ Complete 1165
#+*Baldridge Compass C041 #*EF Commando 1366
#D A R WENDY T913 #*Baldridge Isabel Y69
20278092 HARB Wendy C65 JH #+*PA Power Tool 9108
HARB Wendy 987 JH

ACT BW/RATIO
80 / 109
ADJ WW/RATIO
626 / 110

CED	BEPD	WEPD	YEPD	SC	DOC	MILK	\$EN
+5 60%	+2.1 70%	+80 10%	+130 20%	+1.45 20%	+21 40%	+27 45%	-11 35%
CW	MARB	RE	FAT	\$M	\$W	\$B	\$C
+66 15%	+1.10 15%	+1.04 10%	+016 60%	+111 1%	+81 3%	+179 10%	+343 1%

D A R Wendy 2624 has donor potential written all over her. She has breed leading figures all across the board. In addition to the top end performance EPDs that are shown, she is top 1% for Foot Claw, 4% for Angle, and Top 2% HP. Her dam and her grand dam are current ET donors in our herd. Her dam has turned in an impressive Nursing Ratio so far of 2@113 while her Grand dam, Wendy C65, 5@111, and her Great Grand Dam posted 8@109. Production and Performance runs deep in this heifer. A maternal brother to her dam sells as Lot 51.

LOT 104 D A R RITA 2648
BIRTH DATE: 02-26-2022 COW *20494525 TATTOO: 2648

#+*KM Broken Bow 002 #*Summitcrest Complete 1P55
*CASINO BOMBER N33 #Summitcrest Princess 0P12
18658677 #*Casino Annie K48 DPL Upward L70
Casino Annie G64
ANGUS #*Deer Valley Coal Train 41157 #*Boyd Signature 1014
D A R RITA R741 Long Erica 208
18919036 #+D A R Rita O424 #*EF Complement 8088
ACF Rita 0005

ACT BW/RATIO
74 / 97
ADJ WW/RATIO
562 / 99

CED	BEPD	WEPD	YEPD	SC	DOC	MILK	\$EN
+6 55%	+2.1 70%	+91 2%	+158 2%	-.05 95%	+23 30%	+35 5%	-46 95%
CW	MARB	RE	FAT	\$M	\$W	\$B	\$C
+85 2%	+69 45%	+88 20%	+038 85%	+60 60%	+88 1%	+180 10%	+293 10%

This is a performance packed female with the combination of Bomber x Coal Train. She stems back to our very first donor female, ACF Rita 0005, who did a lot of good things from our program. She is tremendous in terms of her growth EPDS, CW, \$W, \$F all ranking in the top 1 or 2%.



D A R RITA 2648 - Lot 104

LOT 105 D A R PRINCESS VEL 2647
BIRTH DATE: 02-14-2022 COW 20494445 TATTOO: 2647

#+*KM Broken Bow 002 #*Summitcrest Complete 1P55
*CASINO BOMBER N33 #Summitcrest Princess 0P12
18658677 #*Casino Annie K48 DPL Upward L70
Casino Annie G64
ANGUS #*S S Niagara Z29 #*Hoover Dam
#D A R PRINCESS VEL T904 Jet S S X144
19661650 #*HARB Princess Vel Z88 JH #*Connealy Consensus 7229
#*HARB Princess Vel 980 JH

ACT BW/RATIO
78 / 107
ADJ WW/RATIO
613 / 108

CED	BEPD	WEPD	YEPD	SC	DOC	MILK	\$EN
+9 30%	+1.6 60%	+88 2%	+149 4%	+1.41 20%	+19 45%	+34 10%	-42 95%
CW	MARB	RE	FAT	\$M	\$W	\$B	\$C
+76 4%	+1.00 20%	+67 45%	+024 70%	+84 5%	+88 1%	+177 10%	+314 4%

A first time opportunity, a heifer for sale directly from the heart of the Princess Vel cow family. Dig into a 3 gen pedigree; her dam, T904 has 2@105 NR; grand dam, Z88 8@106 NR; great grand dam, 980 9@113 NR to combine for 19 calves with an average nursing ratio of 109!! Then look at the numbers, Top 1% HP in addition to all the performance and carcass merit. ALL IN ONE FEMALE.

LOT 106 D A R MAXINE 2615
BIRTH DATE: 03-03-2022 COW *20547996 TATTOO: 2615

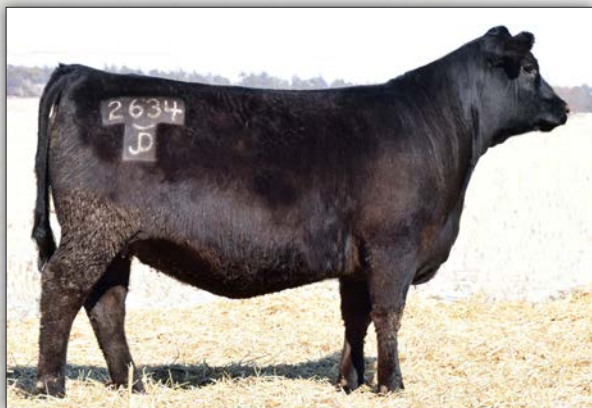
*Marcys Scale Crusher #*Sitz Upward 307R
*+S A V CRUSH 0935 #+*Marcys Erica 393
19852819 +*S A V Blackcap May 4574 #+*S A V Resource 1441
#+S A V Blackcap May 5530
ANGUS #*Ellingson Homestead 6030 #*CTS Remedy 1T01
#D A R MAXINE S873 EA Erica 1082
19424501 +*D A R Maxine P103 #*V A R Discovery 2240
#D A R Ms Upgrade N834

ACT BW/RATIO
90 / 120
ADJ WW/RATIO
607 / 106

CED	BEPD	WEPD	YEPD	SC	DOC	MILK	\$EN
+7 45%	+2.1 70%	+69 25%	+128 20%	+1.43 20%	+16 60%	+35 5%	-23 70%
CW	MARB	RE	FAT	\$M	\$W	\$B	\$C
+57 30%	+59 60%	+65 50%	+012 55%	+73 25%	+71 15%	+145 40%	+261 30%

A maternal sister to the 2022 high selling female that went to Tailor Made Genetics, Red Lodge, MT. She's from our Maxine cow family combined with a new sire by the cow maker, Marcys Scale Crusher. A neat outcross for our program.

DIX ANGUS RANCH



D A R MAXINE 2634 - Lot 107

LOT 107 D A R MAXINE 2634

BIRTH DATE: 02-16-2022 COW **20475999 TATT00: 2634
 Vermilion Spur E119 #*Connealy Spur
 #HEIKEN BROADVIEW Vermilion Lass 4071
 19421003 #*JCH BHA Karen 7815 #*SITZ Logo 12964
 JCH Karen 5130
 ANGUS GS #*LD Emblazon 999 #+O C C Emblazon 854E
 #D A R MAXINE P104 #+SH Forever Lady 3124 5118
 18244844 #D A R Ms Upgrade N834 #*Styles Upgrade J59
 +BJ Objective 8212

ACT BW/RATIO
 80 / 108
 ADJ WW/RATIO
 576 / 98

CED	BEPD	WEPD	YEPD	SC	DOC	MILK	\$EN
+2 85%	+1.8 65%	+91 2%	+155 3%	+1.45 20%	+22 35%	+24 65%	-37 95%
CW	MARB	RE	FAT	\$M	\$W	\$B	\$C
+70 10%	+79 35%	+1.01 10%	+034 80%	+73 25%	+81 3%	+166 20%	+288 15%

A tremendous heifer from one of our cornerstone donors, Maxine P104! Take a look at all the true performance in this female. Her length and depth of body with this EPD package is truly unmatched. She will make a great donor prospect for any herd.

LOT 108 D A R PRINCESS VEL 2677

BIRTH DATE: 02-28-2022 COW 20474152 TATT00: 2677
 #*Plattmeyer Weigh Up K360 #*Sitz Upward 307R
 MEAD PERSEVERANCE R1266 #Barbara of Plattmeyer 337
 19162202 #Mead Miss Marathon L835 #Connealy Answer 71
 #Mead Miss Marathon J630
 ANGUS GS #*S Whitlock 179 #*S Chisum 6175
 HARB PRINCESS VEL E59 JH #S Pride Anna 709
 19038219 #HARB Princess Vel B87 JH #HF Prowler 43U
 HARB Princess Vel Y95 JH

ACT BW/RATIO
 82 / 108
 ADJ WW/RATIO
 582 / 102

CED	BEPD	WEPD	YEPD	SC	DOC	MILK	\$EN
+4 70%	+3.2 90%	+78 10%	+137 10%	+6.7 65%	+24 25%	+35 5%	-39 95%
CW	MARB	RE	FAT	\$M	\$W	\$B	\$C
+63 20%	+66 50%	+68 45%	-.002 35%	+70 30%	+74 10%	+157 30%	+274 20%

Another high performance type female from the Princess Vel cow family, this time sired by Perseverance. Her dam, HARB Princess Vel E59 JH, has produced 4@104 for nursing ratio, and her Pathfinder grand dam has turned in 7@107 at weaning time. Maternal performance runs deep.

LOT 109 D A R MAXINE 2660

BIRTH DATE: 02-21-2022 COW 20465850 TATT00: 2660
 +*D A R Turbo R146 #+*S A V Resource 1441
 #D A R PROPEL T085 #D A R Maxine P104
 19612156 #HARB Princess Vel Z88 JH #*Connealy Consensus 7229
 #+HARB Princess Vel 980 JH
 ANGUS GS #*S Whitlock 179 #*S Chisum 6175
 #D A R MAXINE T972 #S Pride Anna 709
 20337822 #D A R Maxine P104 #*LD Emblazon 999
 #D A R Ms Upgrade N834

ACT BW/RATIO
 72 / 99
 ADJ WW/RATIO
 612 / 107

CED	BEPD	WEPD	YEPD	SC	DOC	MILK	\$EN
+9 30%	+7 40%	+90 2%	+151 4%	+1.13 35%	+29 10%	+29 30%	-25 75%
CW	MARB	RE	FAT	\$M	\$W	\$B	\$C
+63 20%	+67 50%	+79 30%	+036 85%	+85 4%	+92 1%	+144 45%	+272 25%

Here's a very attractive Propel daughter from a really nice young cow out of Maxine P104 who has weaned 2@108 while maintaining a 360 day calving interval. She's going to make a great female at her next stop.

LOT 110 D A R MAXINE 2697

BIRTH DATE: 03-16-2022 COW **20468719 TATT00: 2697
 *L/R Colt 45 3045 S/C Medicine Man 01Y7
 #*D A R GUNSLINGER R177 #Summitcrest Blizzard 0X62
 18965558 Summitcrest Elba 1Y90 #*Summitcrest Complete 1P55
 Summitcrest Elba 0K96
 ANGUS GS #*LD Emblazon 999 #+O C C Emblazon 854E
 #D A R MAXINE P104 #+SH Forever Lady 3124 5118
 18244844 #D A R Ms Upgrade N834 #*Styles Upgrade J59
 +BJ Objective 8212

ACT BW/RATIO
 74 / 99
 ADJ WW/RATIO
 632 / 107

CED	BEPD	WEPD	YEPD	SC	DOC	MILK	\$EN
+10 20%	-1 20%	+71 20%	+131 15%	+1.01 40%	+34 1%	+31 20%	-17 55%
CW	MARB	RE	FAT	\$M	\$W	\$B	\$C
+46 55%	+42 75%	+40 85%	+021 65%	+67 40%	+75 10%	+120 75%	+223 70%

A direct Maxine P104 daughter from our herd sire, Gunslinger. She's a moderate framed, easy fleshing type female with a double digit CED, minus BW, and top 15% YW, top 1% Docility. She's fancy.



D A R MAXINE 2697 - Lot 110

LOT 111 D A R PRIDE 2609

BIRTH DATE: 02-24-2022 COW 20467604 TATT00: 2609
 *L/R Colt 45 3045 S/C Medicine Man 01Y7
 #*D A R GUNSLINGER R177 #Summitcrest Blizzard 0X62
 18965558 Summitcrest Elba 1Y90 #*Summitcrest Complete 1P55
 Summitcrest Elba 0K96
 ANGUS GS #*LD Emblazon 999 #+O C C Emblazon 854E
 D A R PRIDE Q669 #+SH Forever Lady 3124 5118
 18688047 DAR Pride N835 #S A V Pioneer 7301
 DAR CD Pride E242 D331 J192

ACT BW/RATIO
 68 / 89
 ADJ WW/RATIO
 535 / 94

CED	BEPD	WEPD	YEPD	SC	DOC	MILK	\$EN
+11 15%	-1.1 10%	+63 40%	+121 30%	+96 45%	+32 3%	+25 60%	-12 40%
CW	MARB	RE	FAT	\$M	\$W	\$B	\$C
+46 55%	+52 65%	+66 50%	+044 90%	+69 30%	+63 30%	+136 55%	+245 50%

A ¾ sister to lot 110. Added depth and fleshing ability calving-ease genetics with great growth numbers. The sire and dam are both very easy keeping.



D A R MAXINE 2660 - Lot 109

DIX ANGUS RANCH

LOT 112 **D A R FLORA 2675** [OHF]
BIRTH DATE: 02-13-2022 COW 20474014 TATTOO: 2675

#*Plattmere Weigh Up K360 #*Sitz Upward 307R
MEAD PERSEVERANCE R1266 #Barbara of Plattmere 337
19162202 #Mead Miss Marathon L835 #Connealy Answer 71
#Mead Miss Marathon J630

ANGUS

+*D A R Gunslinger R177

D A R FLORA T910

20270618 HARB Flora D63 HH

*L/R Colt 45 3045

Summitcrest Elba 1Y90

*HARB Hindquarter 473 JH

HARB Flora Z96 HH

ACT BW/RATIO

64 / 88

ADJ WW/RATIO

544 / 95

CED	BEPD	WEPD	YEPD	SC	DOC	MILK	\$EN
+10 20%	-4 20%	+58 60%	+108 50%	+59 70%	+17 55%	+28 35%	-23 70%
CW	MARB	RE	FAT	\$M	\$W	\$B	\$C
+44 60%	+74 40%	+59 60%	+009 50%	+64 45%	+58 45%	+141 45%	+247 45%

A Mead Perseverance daughter combined with two of our own proven herd sires, Gunslinger and Hindquarter. She exhibits a top 10% HP EPD.

LOT 113 **D A R BLACKCAP 2612**
BIRTH DATE: 01-27-2022 COW 20546916 TATTOO: 2612

#*Connealy Confidence Plus #*Connealy Confidence 0100
+*EGB PLUS ONE Elbanna of Conanga 1209
19196960 #+E&B Lady 1023 Precision 936 #+E&B 1680 Precision 1023
E&B Lady 878 New Design 441

ANGUS

+*McCall Black Impression 2053

MOLITOR 2053 BLKCAP 013-6004

18702647 Molitor InF Blackcap 849-013

#*Connealy Impression

JMc Black Donna 5526 3342

#*Mytty In Focus

#Molitor Blackcap 641-849

ACT BW/RATIO

54 / 71

ADJ WW/RATIO

520 / 91

CED	BEPD	WEPD	YEPD	SC	DOC	MILK	\$EN
+15 2%	-2.4 2%	+54 70%	+98 70%	+54 70%	+11 80%	+22 80%	-6 25%
CW	MARB	RE	FAT	\$M	\$W	\$B	\$C
+26 95%	+19 95%	+51 70%	+009 50%	+67 40%	+54 55%	+99 95%	+195 90%

This Plus One daughter is a nice prospect to add to the herd. A double digit CED and minus birth combined with her phenotype would likely produce some nice calving ease bulls in her future. A nice feminine fronted and deep bodied female.

DIX ANGUS RANCH COMMERCIAL HEIFERS

These heifers are 100% home raised. They have all been OCV'd and had all their pre-breeding vaccinations. These are the top end of our commercial heifers as we did not retain any commercial replacements for ourselves. These are a great opportunity to bring good maternal genetics into your herd. "These will sell in 5 Head groups, and the winning bidder will have the option to buy all the heifers of their desire in 5 head increments"

1-5	26-30
6-10	31-35
11-15	36-40
16-20	41-45
21-25	46-50



MARCH 13, 2023

DIX ANGUS RANCH

REFERENCE SIRES

U-2 COALITION 206C

HF SYNDICATE 213Z X U2 ERELITE 109Z

CED	BEPD	WEPD	YEPD	SC	DOC	HP	MILK
+10	+9	+56	+110	+91	+39	+10.4	+28
CW	MARB	RE	\$M	\$W	\$C		
+43	+40	+52	+75	+54	+254		

D A R PROPEL T085

*D A R TURBO R146 X *HARB PRINCESS VEL 288 JH

CED	BEPD	WEPD	YEPD	SC	DOC	HP	MILK
+13	+1	+80	+143	+43	+26	+16.2	+25
CW	MARB	RE	\$M	\$W	\$C		
+56	+87	+56	+81	+75	+274		

BALDRIDGE FLAGSTONE F411

+*HOOVER NO DOUBT X *BALDRIDGE ISABEL Y69

CED	BEPD	WEPD	YEPD	SC	DOC	HP	MILK
-3	+3.5	+71	+130	+1.24	+35	+9.7	+29
CW	MARB	RE	\$M	\$W	\$C		
+58	+93	+62	+87	+63	+298		

HEIKEN BROADVIEW

VERMILION SPUR E119 X *JCH BHA KAREN 7815

CED	BEPD	WEPD	YEPD	SC	DOC	HP	MILK
+9	-.6	+79	+140	+2.61	+14	+11.4	+21
CW	MARB	RE	\$M	\$W	\$C		
+60	+1.05	+70	+69	+71	+292		

WOODHILL COMPLETE A130-C2

#*EF COMPLEMENT 8088 X #WOODHILL EVERGREEN U181-A130

CED	BEPD	WEPD	YEPD	SC	DOC	HP	MILK
+10	+2	+78	+125	+1.35	+18	+12.4	+26
CW	MARB	RE	\$M	\$W	\$C		
+60	+1.00	+63	+84	+80	+303		

PYRAMID JAMESON 9212

*21AR PACKER 4313 X MCLENNAN LADY BLUE 347

CED	BEPD	WEPD	YEPD	SC	DOC	HP	MILK
+2	+4.2	+64	+110	+5.6	+14	+5.4	+18
CW	MARB	RE	\$M	\$W	\$C		
+40	+36	+35	+46	+47	+198		

SPRING COVE RENO 4021

#*KM BROKEN BOW 002 X *SPRING COVE LIZA 021

CED	BEPD	WEPD	YEPD	SC	DOC	HP	MILK
+7	+1.0	+82	+136	+1.08	+23	+18.7	+30
CW	MARB	RE	\$M	\$W	\$C		
+51	+1.14	+74	+99	+94	+312		

MEAD PERSEVERANCE R1266

#*PLATTEMERE WEIGH UP K360 X #MEAD MISS MARATHON L835

CED	BEPD	WEPD	YEPD	SC	DOC	HP	MILK
+7	+1.1	+85	+146	+4.8	+22	+14.8	+30
CW	MARB	RE	\$M	\$W	\$C		
+61	+1.00	+71	+76	+83	+299		

D A R STOCKTON 0101

#*SPRING COVE RENO 4021 X #*HARB PRINCESS VEL 980 JH

CED	BEPD	WEPD	YEPD	SC	DOC	HP	MILK
+4	+4.4	+91	+149	+2.20	+25	+21.7	+32
CW	MARB	RE	\$M	\$W	\$C		
+70	+78	+49	+100	+83	+302		

SITZ RESILIENT 10208

*SITZ STELLAR 726D X *SITZ MISS BURGESS 1856

CED	BEPD	WEPD	YEPD	SC	DOC	HP	MILK
+9	+3	+76	+135	+9.9	+16	+15.4	+22
CW	MARB	RE	\$M	\$W	\$C		
+46	+89	+74	+86	+68	+282		

D A R GUNSLINGER R177

*L/R COLT 45 3045 X SUMMITCREST ELBA 1Y90

CED	BEPD	WEPD	YEPD	SC	DOC	HP	MILK
+6	-.4	+57	+121	+1.89	+28	+7.6	+27
CW	MARB	RE	\$M	\$W	\$C		
+51	+39	+65	+50	+53	+241		

CASINO BOMBER N33

#*KM BROKEN BOW 002 X #*CASINO ANNIE K48

CED	BEPD	WEPD	YEPD	SC	DOC	HP	MILK
+12	-1.6	+80	+131	+5.2	+17	+12.0	+27
CW	MARB	RE	\$M	\$W	\$C		
+65	+86	+95	+73	+88	+295		

S A V CRUSH 0935

*MARCYS SCALE CRUSHER X *S A V BLACKCAP MAY 4574

CED	BEPD	WEPD	YEPD	SC	DOC	HP	MILK
+5	+1.2	+79	+140	+9.8	+26	+16.0	+27
CW	MARB	RE	\$M	\$W	\$C		
+76	+09	+96	+71	+74	+262		

KOUPALS B&B PATHFINDER 8106

*LT ENTERPRISE 5213 X #*B&B BLKBD PROGRESS 3015

CED	BEPD	WEPD	YEPD	SC	DOC	HP	MILK
+8	-1.3	+69	+124	+2.6	+6	+16.2	+29
CW	MARB	RE	\$M	\$W	\$C		
+44	+68	+68	+89	+74	+269		

DIX ANGUS RANCH

REFERENCE SIRES



HARB PRINCESS VEL 980 JH

CED	BEPD	WEPD	YEPD	MILK	\$M	\$W	\$B	\$C
+9	+3.3	+77	+133	+35	+67	+70	+143	+252



D A R VELDA M724

CED	BEPD	WEPD	YEPD	MILK	\$M	\$W	\$B	\$C
+9	-.9	+49	+83	+39	+77	+66	+100	+207



HARB PRINCESS VEL Z88 JH

CED	BEPD	WEPD	YEPD	MILK	\$M	\$W	\$B	\$C
+14	+8	+75	+128	+30	+76	+75	+145	+264



D A R HAL R763

CED	BEPD	WEPD	YEPD	MILK	\$M	\$W	\$B	\$C
+4	+3.0	+70	+128	+18	+59	+53	+123	+219



HARB BLACK LADY 688 JH

CED	BEPD	WEPD	YEPD	MILK	\$M	\$W	\$B	\$C
+9	+2.9	+64	+109	+30	+71	+61	+105	+207



D A R MAXINE P104 [OSF]

CED	BEPD	WEPD	YEPD	MILK	\$M	\$W	\$B	\$C
+10	+6	+71	+130	+26	+51	+66	+141	+234



D A R MS UPSTART N832 [DDF]

CED	BEPD	WEPD	YEPD	MILK	\$M	\$W	\$B	\$C
+13	-1.0	+69	+110	+26	+97	+79	+135	+272

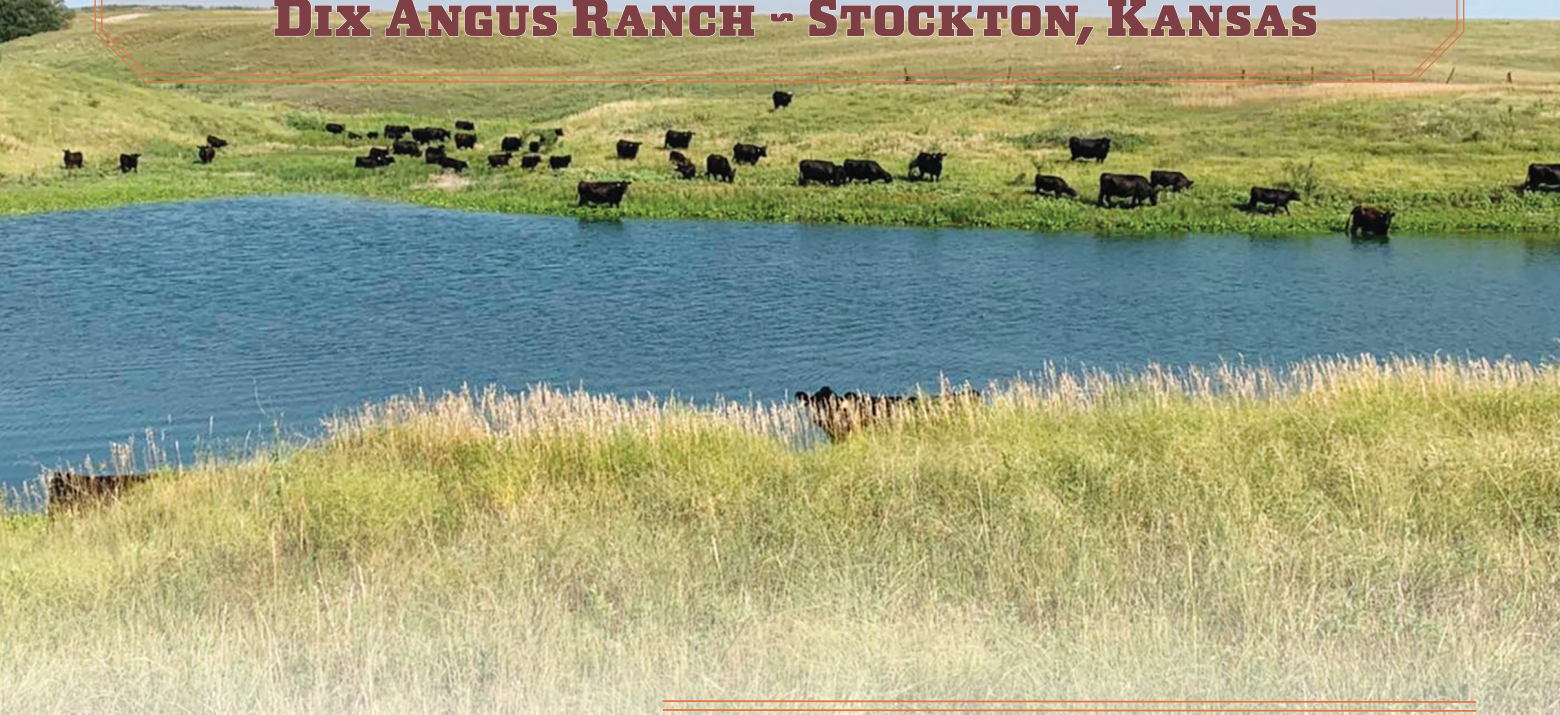


D A R MS UPSHOT N842 [DDF]

CED	BEPD	WEPD	YEPD	MILK	\$M	\$W	\$B	\$C
+9	+1.1	+50	+95	+27	+64	+52	+139	+244

SMALL TOWN ROOTS. BIG INDUSTRY IMPACTS.

DIX ANGUS RANCH ~ STOCKTON, KANSAS



G*rowth is something Jeff and Cody Dix take very seriously when it comes to their operation, and not just with size and scope. This father-son operation is always looking honestly at their herd in order to market the most competitive genetics possible.*

by Celsey Crabtree

The Dix Angus Ranch originated, and still prospers, in Northwest Kansas as a family-run operation that raises high-quality registered Angus cattle, produces row crops, and runs a custom harvest business. The ranch began as a small-scale operation in the early 1950's with Robert and Maxine Dix raising multiple cattle breeds such as Hereford, Angus, Simmental, and Gelbvieh. Robert and his son, Jeff, continued to specialize their ranch and focused on raising commercial Angus cattle.

Throughout the mid-90's, Jeff would buy groups of replacement quality heifers from

places as far away as Montana to as near as his neighbors. Then, he would background the heifers until they were AI bred and turned to pasture for the summer with clean-up bulls. Soon after, the heifers would be marketed as bred heifers or cow-calf pairs.

Intending to produce heifer bulls for their clean-up program, Jeff suggested the idea to his son, Cody, to purchase his first registered Angus cow in 1999 from Green Garden Angus of Ellsworth, Kansas. Jeff and Cody continued to buy registered cattle from Green Garden Angus and raise calving-ease bulls suitable for their heifers. To continue to grow their operation, they increased their registered female herd by buying from other notable Angus ranches, including Molitor Angus and BJ Angus.

Over the years, the registered cowherd has outgrown the heifer and commercial herd operation. The registered Angus herd is now the primary focus of Jeff and Cody, who run approximately 350 registered Angus cows.

Cody, now the third-generation on his family's operation, graduated from Kansas State University (KSU) with a bachelor's degree in feed science and management in May 2011. Following graduation, he came home to work alongside his dad.

Cody strongly attributes the ranch's success to his dad, Jeff, while he was attending college several hours away from home and explained, "Dad is the real backbone of the ranch."



Jeff also offers custom forage harvesting with different options of heads to use for any given job. They also have five supporting trucks.

During his time at KSU, Cody worked for, and learned from, John Slocombe of BJ Angus while in Manhattan, Kansas.

"John Slocombe has been a huge mentor for me. John gave us the opportunity to market bulls and some females in his sale," Cody said.

Not only did Slocombe give the Dix's the chance to sell roughly 35 yearling bulls, they taught Cody the ins and outs of generating a profitable sale. Cody was able to learn how a cattle sale was run from sale day preparations, building a sale book, and all the prep work going into a successful event.

PUT 'EM TO THE TEST...

In 2010, Cody wanted to see how the bulls being produced stacked up to others in the country and took his first group of bulls to the Midland Bull Test in Columbus, Montana. Three of the five bulls qualified for the sale.

"I was really excited to have three bulls make it to the sale, but we were towards the bottom end of the sale, which didn't sit well with me," Cody said.

After coming home, Cody decided to make a change to their breeding program.

Cody decided to add more performance qualities to their bulls, in addition to the low maintenance, calving easy traits they were already selecting for. Cody explained that AI and embryo transfer shaped the genetic improvements that customers wanted, and both techniques are still a pertinent part of the registered herd today. With the help of Cross Country Genetics, the Dix's transfer roughly 120 embryos every year.

In 2018, eight years after he returned from his first Midland Bull Test with some growth goals in mind, the Dix's had the #1 slot at the Midland Bull Sale, which proved their dramatic improvement and dedication to progress. Overall, Cody took 12 bulls, all of which qualified for the sale, and most were in the front half. All the while, the ranch sold bulls private treaty and through the BJ Angus annual sale.

"In just seven or eight years, we went from almost the last slot in the sale to the first. We worked hard to get there," Cody expressed.

In 2019, the Dix Angus family came together to host its first bull and heifer sale at Heartland Regional Stockyards in Plainville, Kansas. They offered 94 bulls and a package of 60 commercial replacement heifers. The sale has continued to grow, and the Dix Angus Ranch will host its next annual sale on March 13, 2023.

"In just seven or eight years, we went from almost the last slot in the {Midland} sale to the first. We worked hard to get there."
-Cody Dix



Left: Haley, Marianne, Jeff, Cody, Brook, and Chloe Dix.

Below: Hindquarter was the Dix Angus Ranch top selection at the 2015 Midland Bull Test, where he was the 5th highest selling bull. His sire, HARB Stur-D, was the high selling bull at the 2012 Midland Bull Test for \$50,000.



Cody attributes a portion of the sale's success to the entire family pitching in to help. In addition to his father, his father's wife, Marianne, his brother, Brook, and sisters, Haley and Chloe, all help with the cattle when needed and are an integral part of sale day.

"Marianne helps with day-to-day work and is there to keep Dad and I in line. Brook lives in Stockton and helps with sale day prep as well as clerks the sale. Haley lives in Texas and Chloe is at school at KSU, but both always try to come back to help. It's really special that everyone tries to come back for sale day," Cody explained.

MADE FOR THE COMMERCIAL CATTLEMAN...

The Dix ranch may have registered cattle, but they run them like a commercial herd.

"Our main focus is reproductive efficiency, maternal excellence, soundness, longevity, and overall performance, and those traits of the Angus breed are superior for our customers," Cody described.

From summer grass, cattle are run on corn and milo stalks until calving and will calve on the range, not in a barn.

“The cows have to know what they’re doing, and the calves have to get up and survive,” Cody said.

The maternal side of the cow is crucial to the success of the calves and the herd. Additionally, the cows must have longevity, as it can be costly to replace these females from year to year. This focus on practicality and functionality has not only been beneficial within their herd, but for the commercial cattleman they work with. With this list of high standards of expectations, the Dix’s also expect their cattle to exhibit high-quality carcass traits and that coupled with an appealing phenotype.

Continuing to improve the profitability of beef cattle operations, the Dix’s sold a homegrown bull to Beef-360, a bull stud operation in Missouri in 2021. Beef-360 named the bull D A R Stockton 0101. The bulls offered represent the top genetics in their respective breeds - proven through progeny and/or backed up by some of the best bulls and cow families available.

“Stockton” was produced from the HARB Princess Vel 980 JH cow, which in recent years has been the cornerstone cow of the Dix’s herd.

“The Princess Vel, Velda, and Maxine, named after my grandmother as she was the glue that held everyone together, are the most prominent cow families in the herd towards pushing us to the next level of our goals to be met,” Cody explained.

Even with the successes of the ranch, Cody explained he’s never satisfied and has significant goals for the future of the ranch. At the top of his list is a continuation of building the herd’s quality and consistency to produce what buyers want. Furthermore, expanding the ranch’s market geographically and being a top breeder of registered Angus cattle are goals Cody is set on accomplishing.

A PERSONAL TOUCH...

Jeff and Cody take great pride in their operation and believe the work they put in every day sets their ranch apart from others. The family does everything themselves: raising their feed and crops for their cattle; managing a custom forage harvesting business; fitting, picturing, and videoing their sale cattle; and doing as much in-house marketing as possible.

“Our main focus is reproductive efficiency, maternal excellence, soundness, longevity, and overall performance, and those traits of the Angus breed are superior for our customers.”

-Cody Dix



D A R Stockton 0101 comes from the Dix’s Princess Vel cow family, who has been the cornerstone cow of the Dix’s herd.

Because both men work closely with their cattle, it gives them the ability to know their herd and the confidence to produce and sell cattle based on the customer’s wants and needs. In addition, Cody tries to learn as much as possible about each cow and bull before breeding, including knowing the EPD’s and existing progeny data. This data allows the ranch to focus on traits that are economically relevant to them and their customers.

Another of Cody’s mentors, Mike Molitor of Molitor Angus, explained that Cody is very progressive for his age and is truly one of a kind. Cody has earned respect from many ranchers by being highly motivated, knowledgeable, and determined to improve. Cody and Jeff Dix have made their mark on the Angus breed and industry and have no plans to slow down.



Cody Dix
2595 C Road
Stockton, KS 67669

PRSR
FIRST CLASS
U.S. POSTAGE
PAID
St. Joseph, MO
Permit #2017



5TH ANNUAL

PRODUCTION SALE MARCH 13, 2023

HEARTLAND REGIONAL STOCKYARDS | PLAINVILLE, KANSAS • 1 PM

